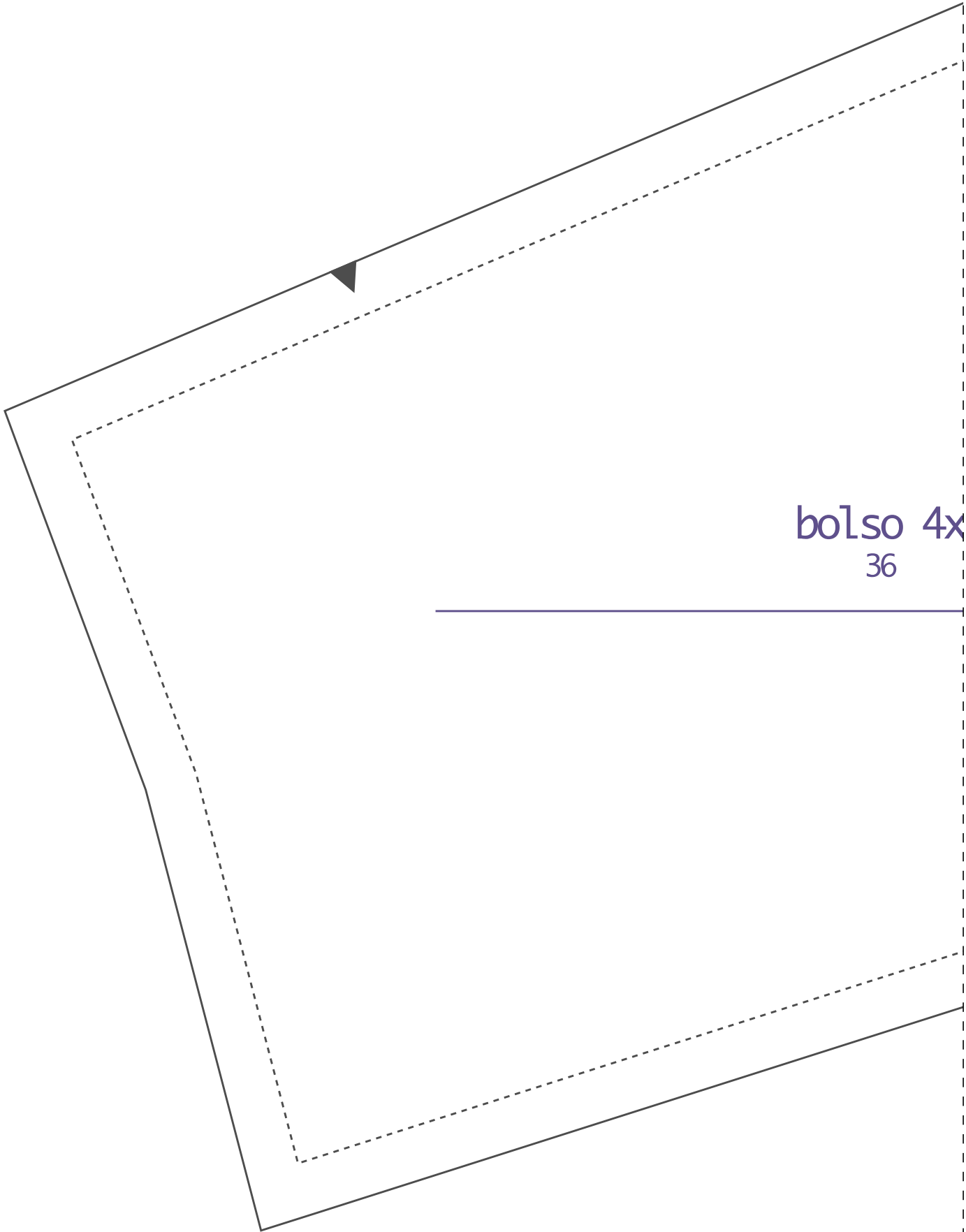


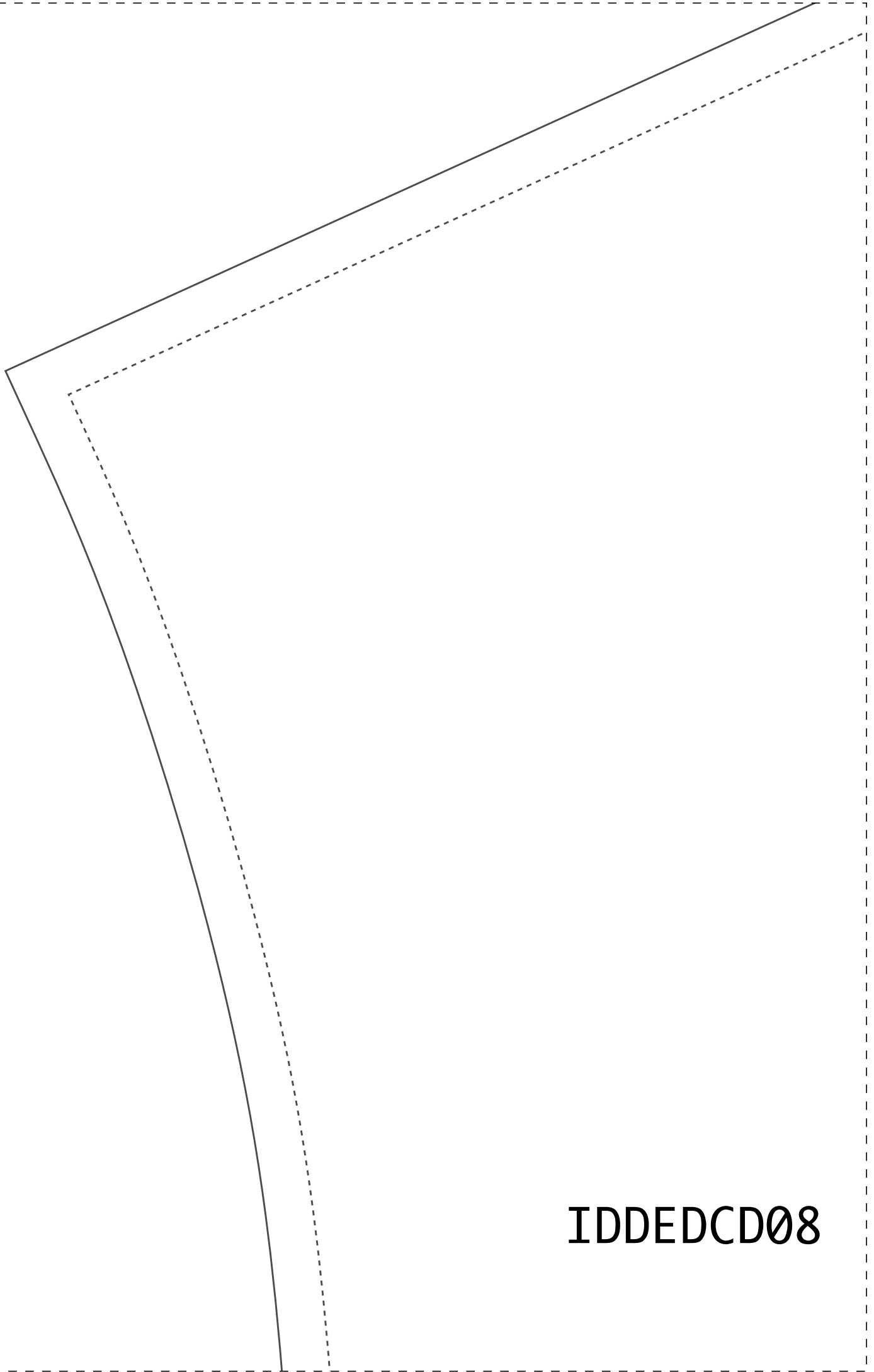
1-1



bolso 4x  
36



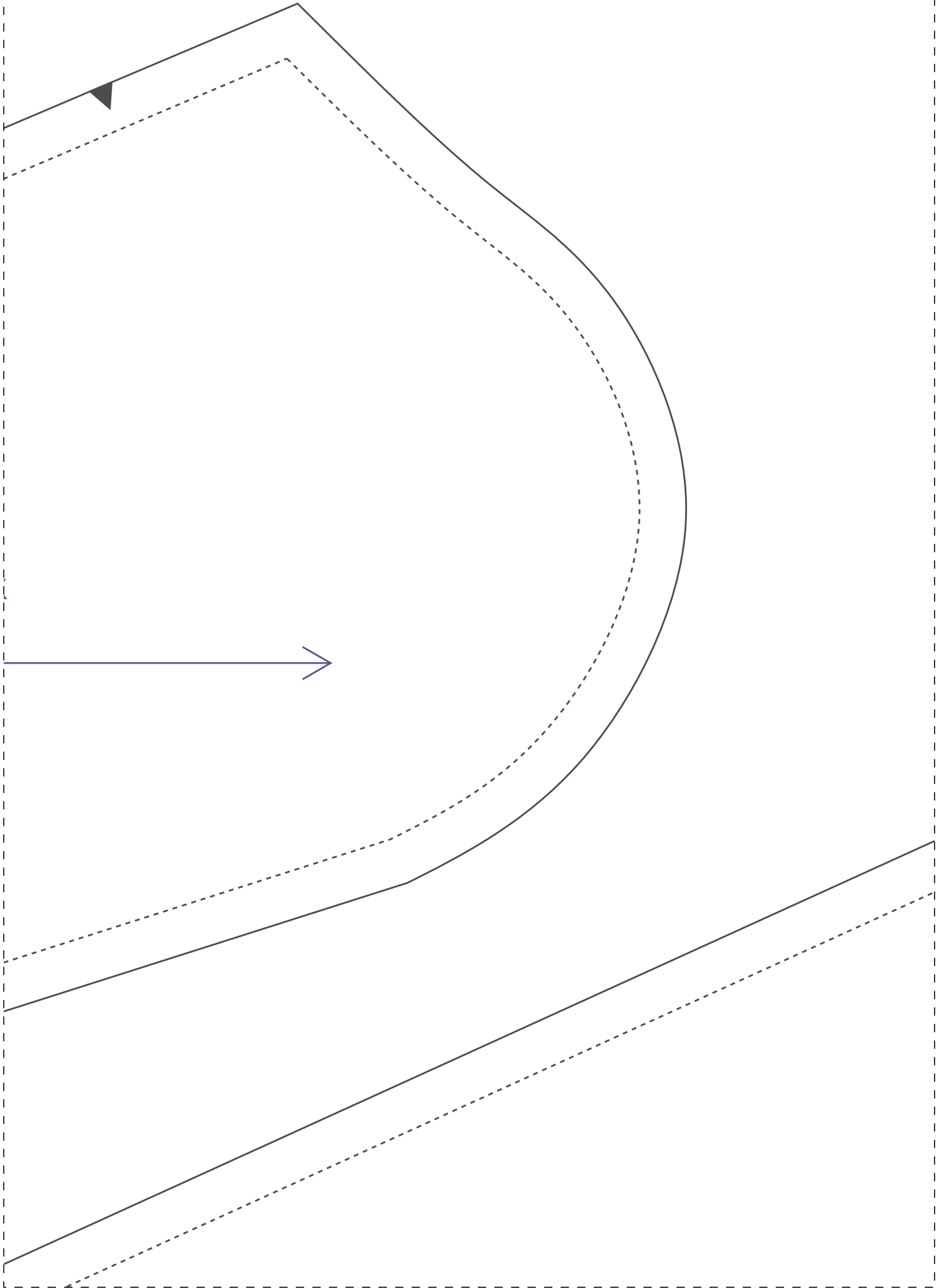
2-1



**IDDED CD08**



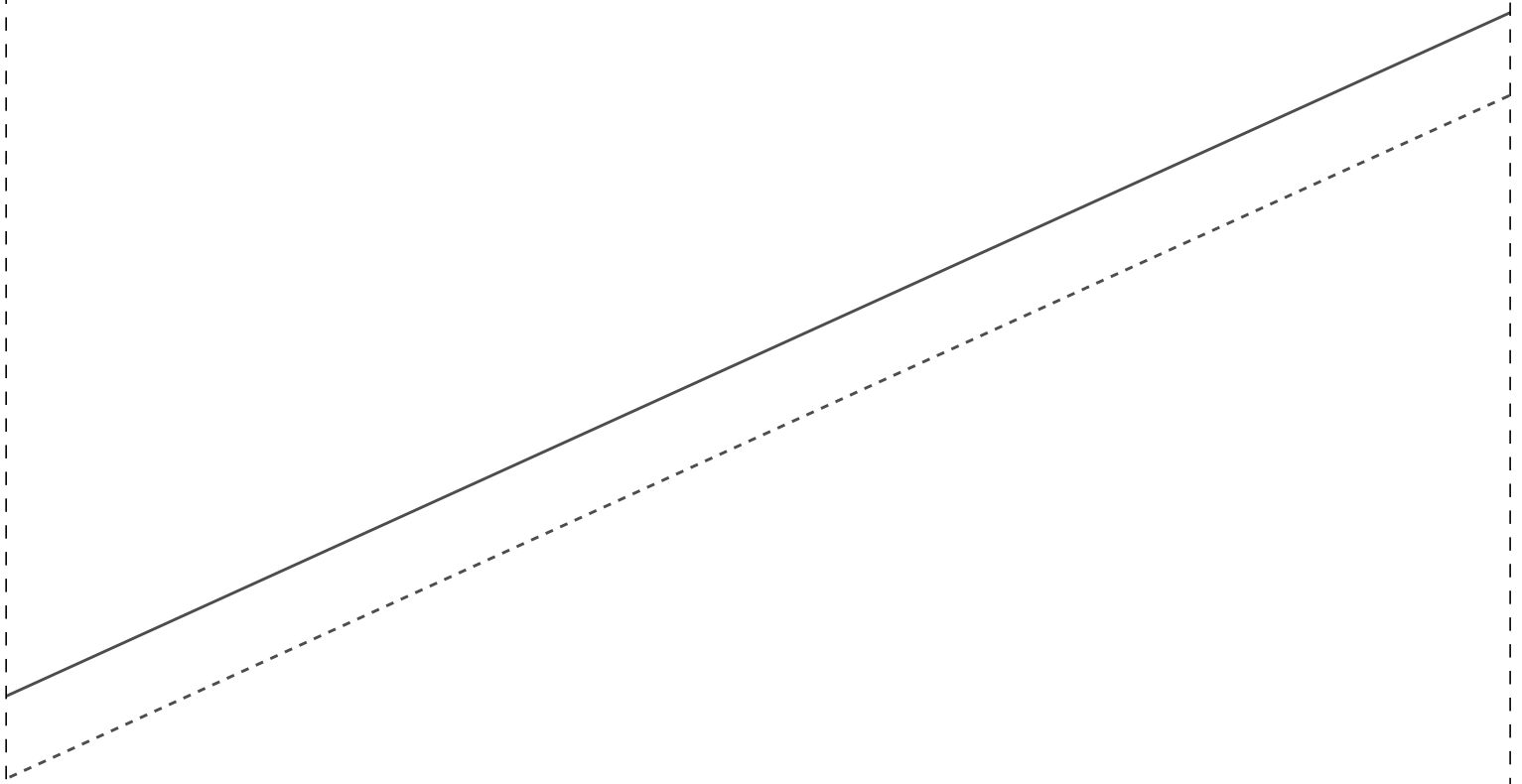
1-2



2-2



1-3



2-3

ia 2x  
36

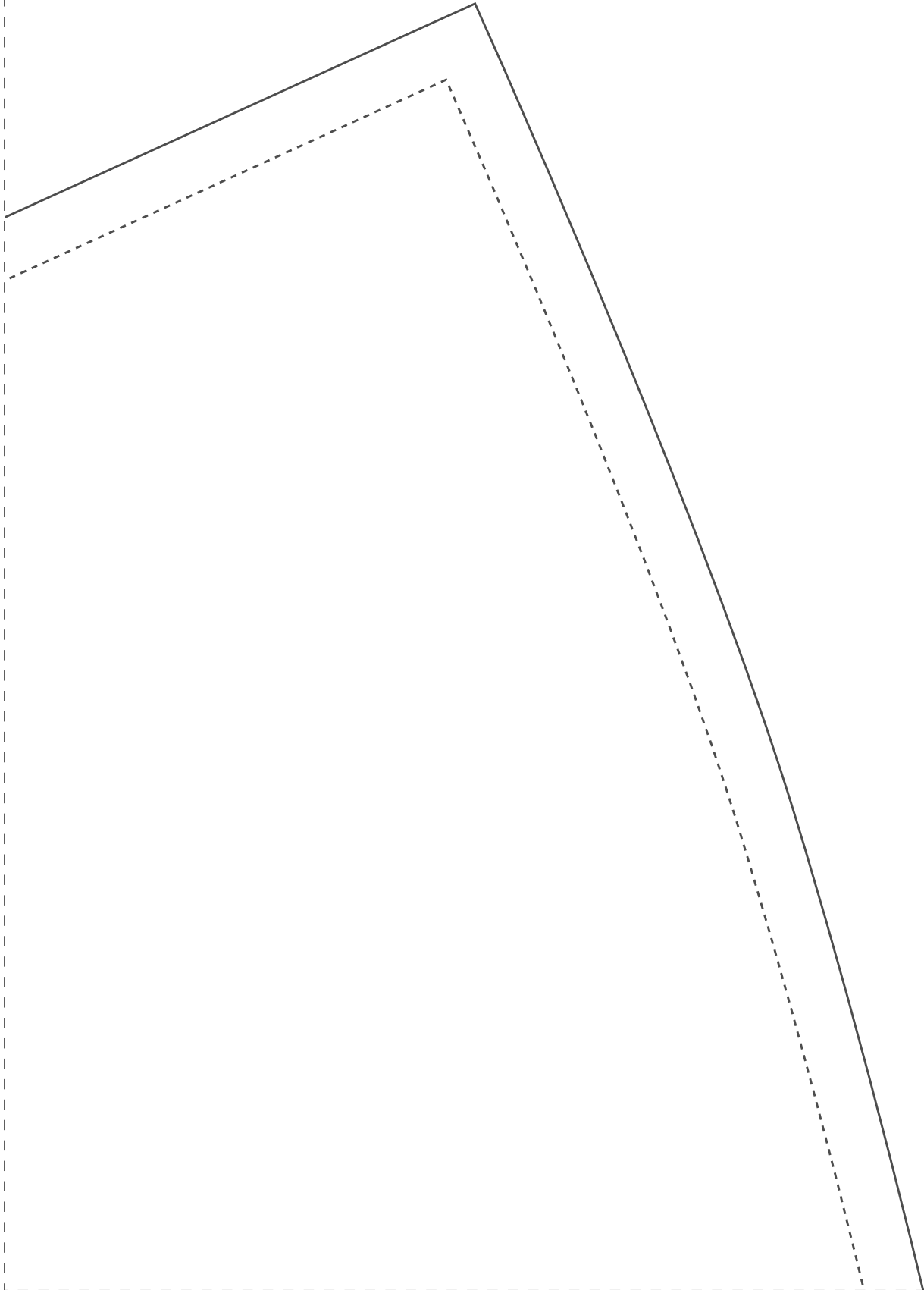




# ၈၂၇၀၃

---

1-4

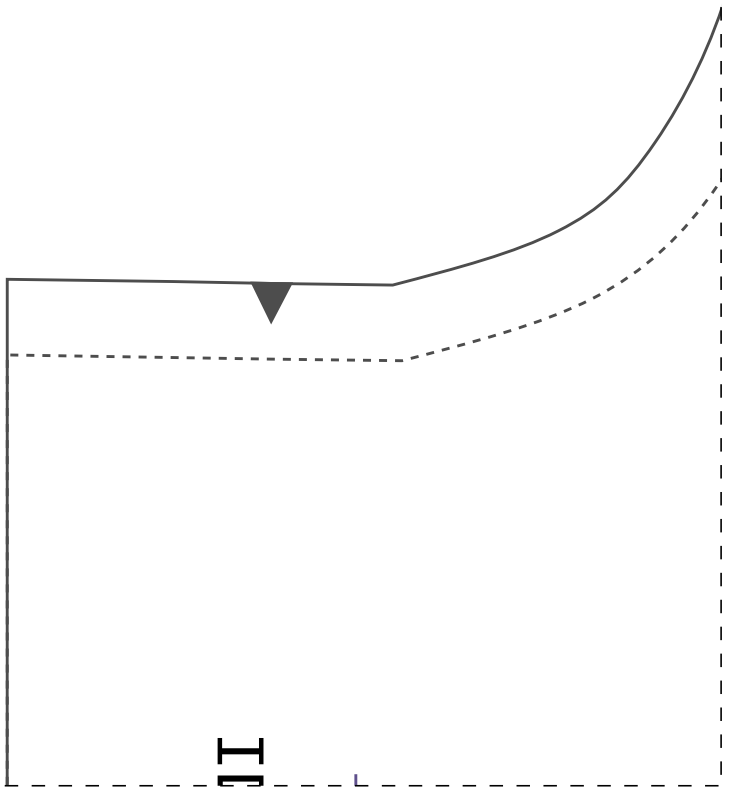


### FICHA TÉCNICA:

- Tecido Plano 1,4m largura
- Viscose, viscolinho, linho, crepes, gabardine, ou similares
- Fechamento frontal com botões
- 2,80m para os tamanhos 36 ao 44
- 3,30m para os tamanhos 46 ao 54
- Botões
- Cortar elástico para a cintura:  
36-62cm/38-64cm/40-66cm/42-70cm  
44-74cm/46-78cm/48-82cm/50-86cm  
20-90cm/54-94cm

---

A large dashed rectangular box occupies the majority of the page, intended for drawing or writing. A solid horizontal line is drawn across the top of this box, just below the header area.



II

dobra

frente 2x  
36



0DEDCCD08





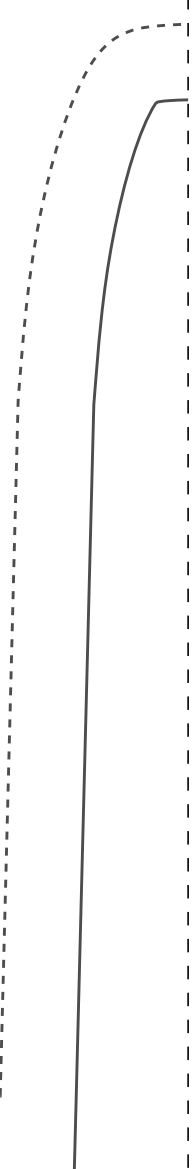
1-6

IDDED CD08

pè  
gola  
2x  
36







Instituto Diana Demarchi  
Escola de Costurar  
Vestido Manga Japonesa e Botões  
**PROIBIDA REVENDA**



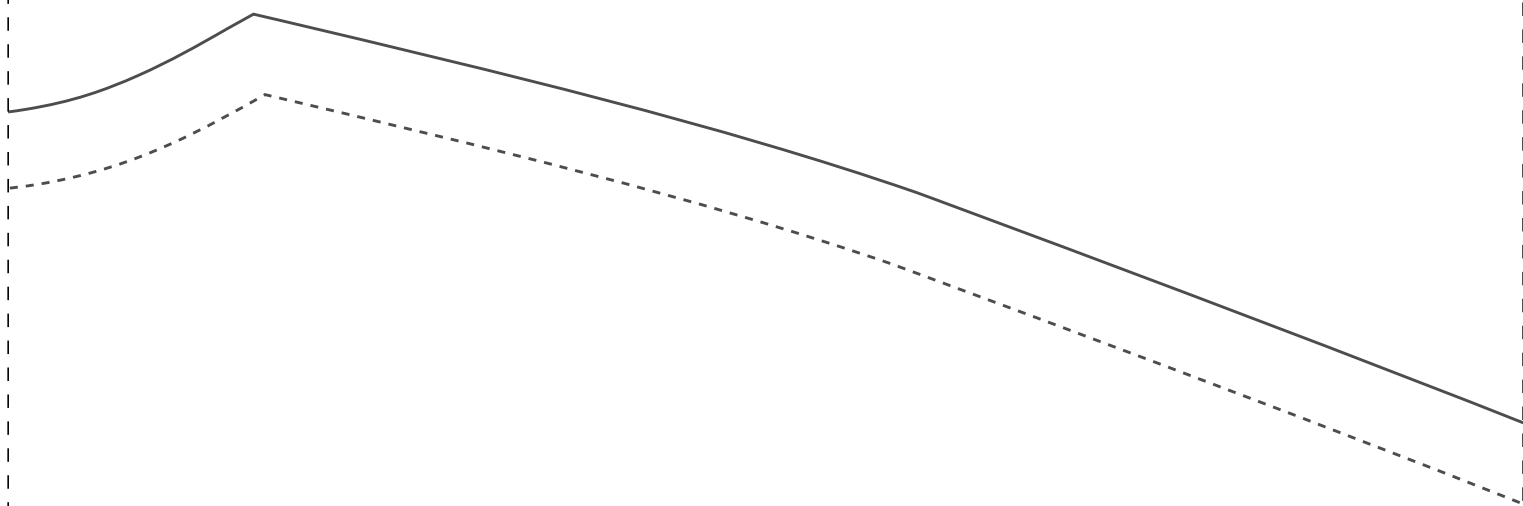
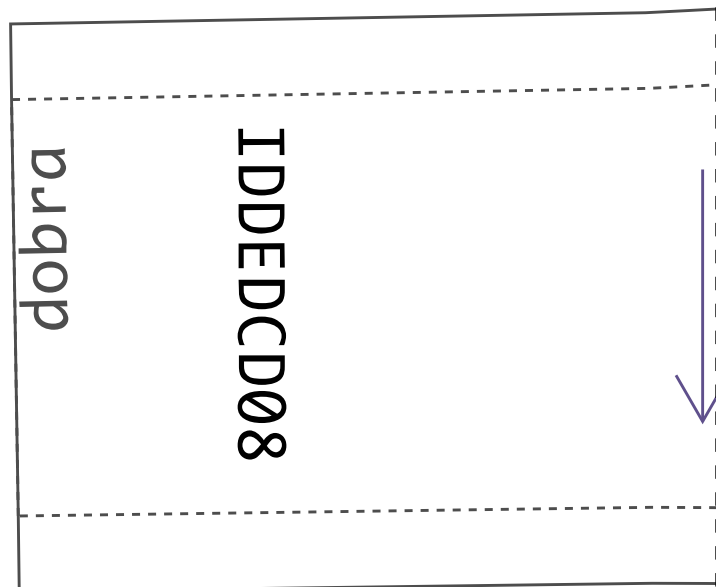
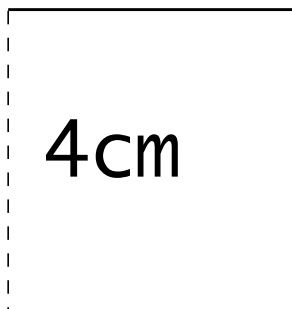
1-7

Teste  
molde  
a mes  
você  
impre

IDDEDCCDØ




de impressão: ao imprimir seu  
meça o quadrado que deverá ter  
na medida informada (4cm), assim  
se certificará que ele foi  
tamanho correto.



2-8

costas 1x  
36







1-9

