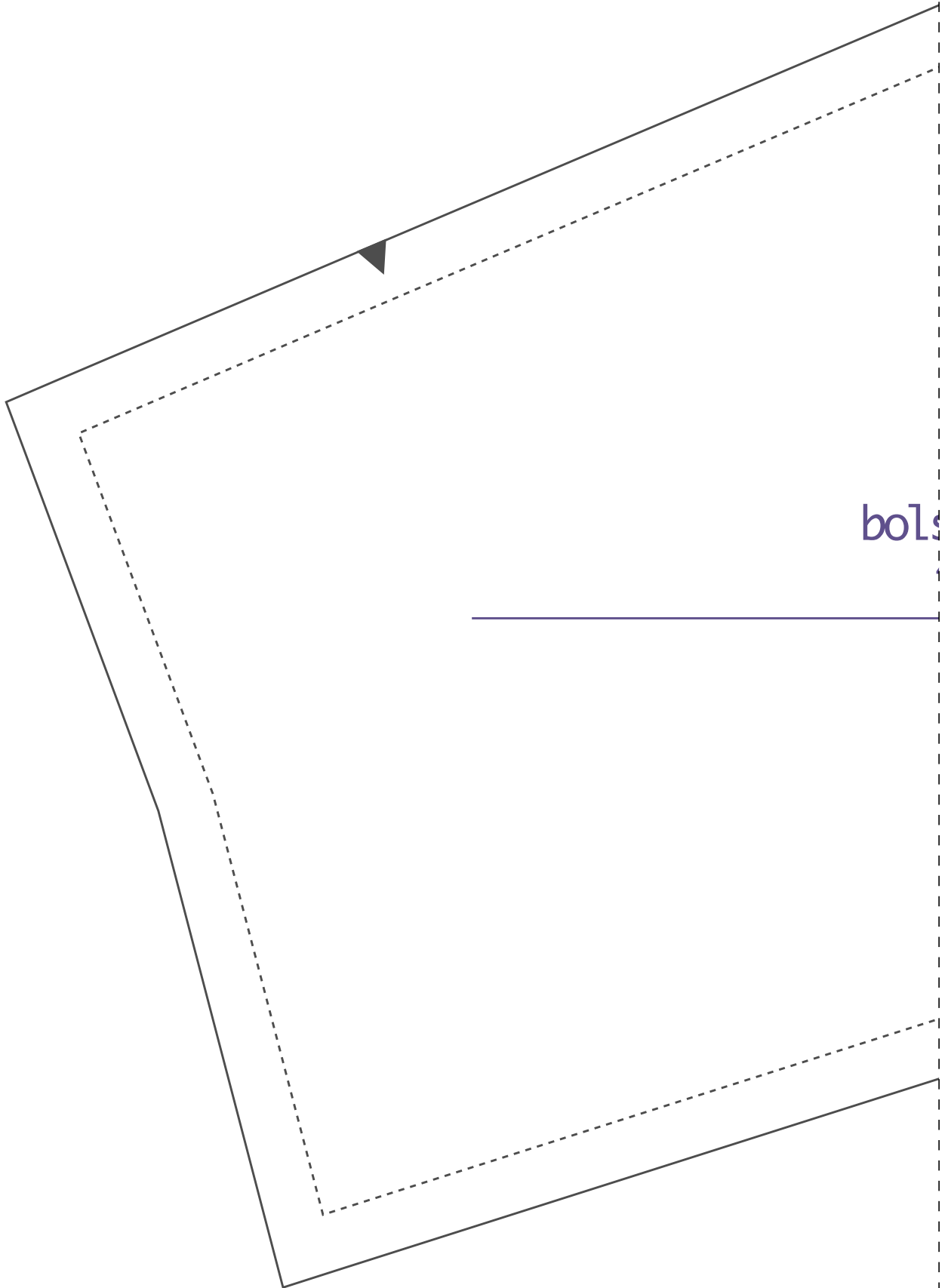


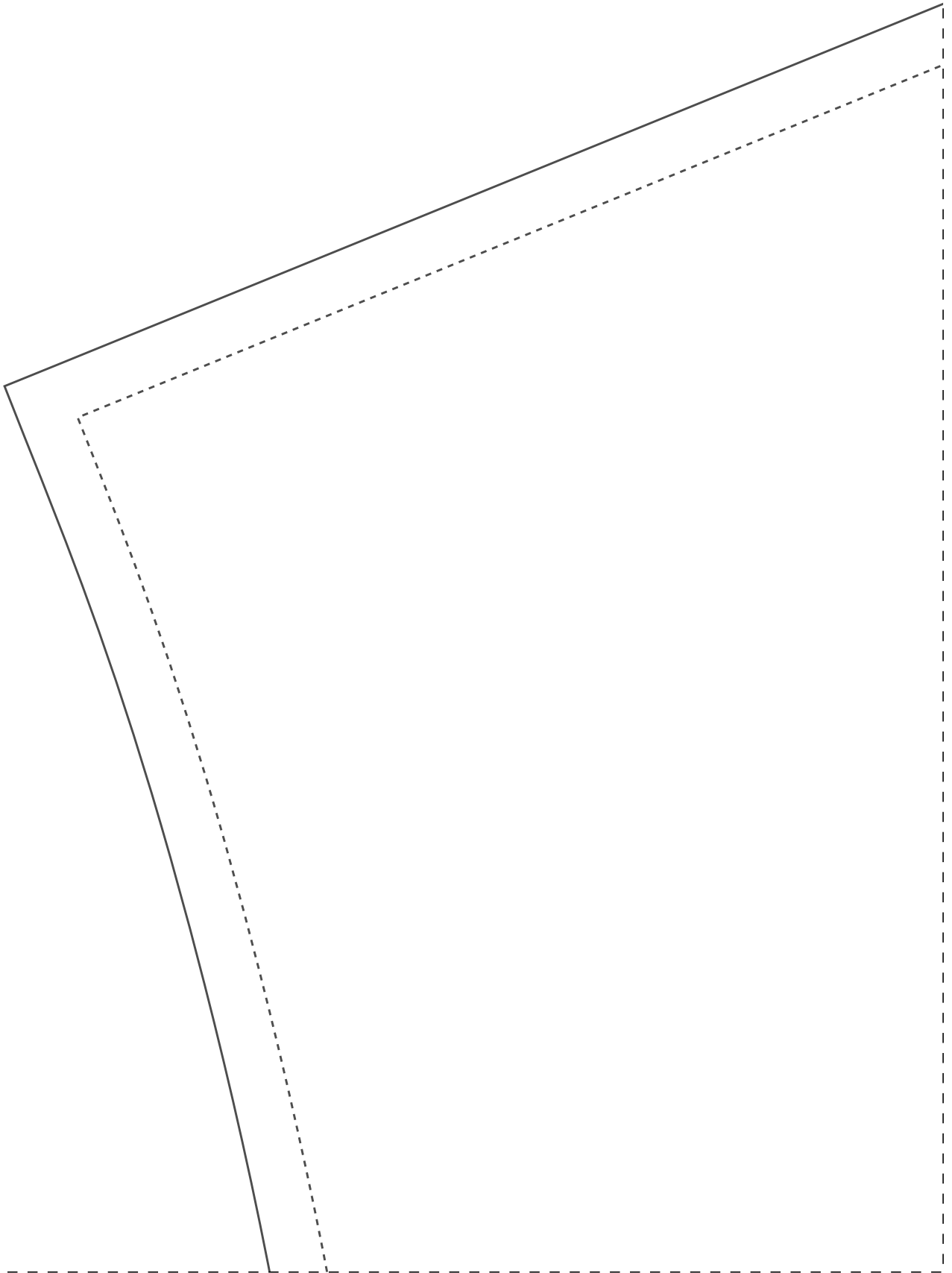
1-1



bolts

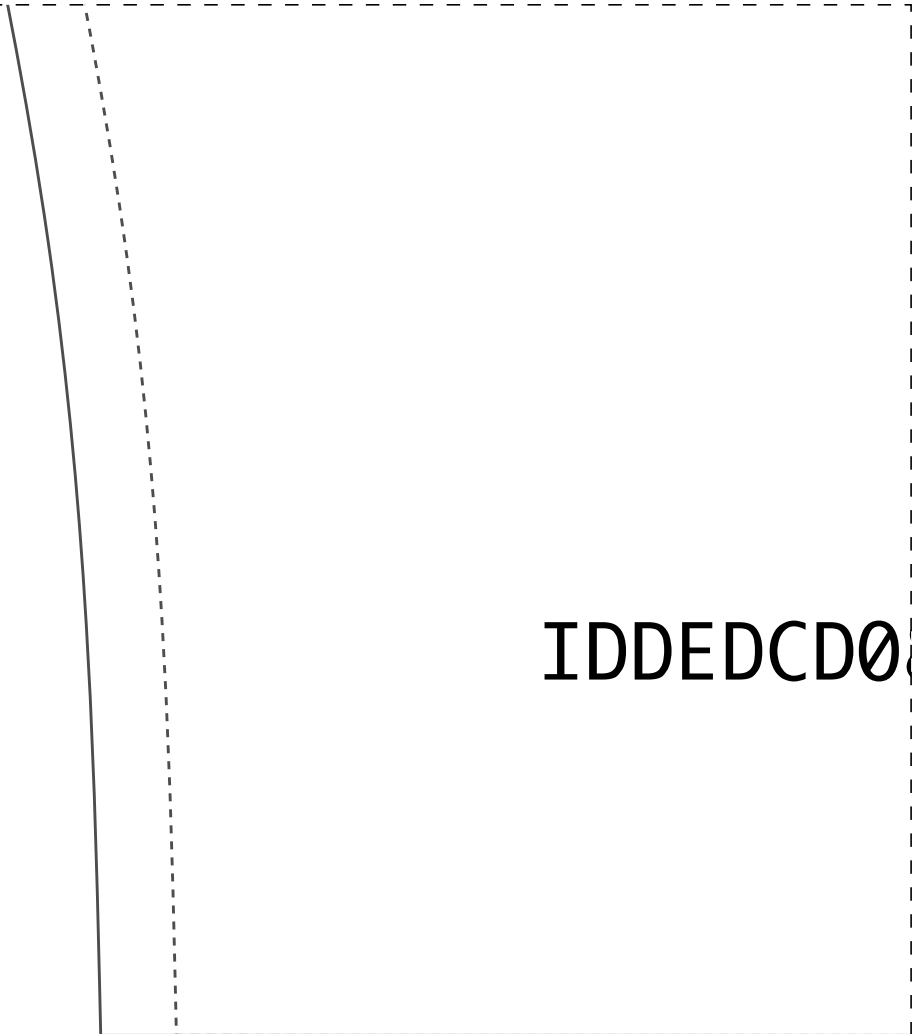


2-1

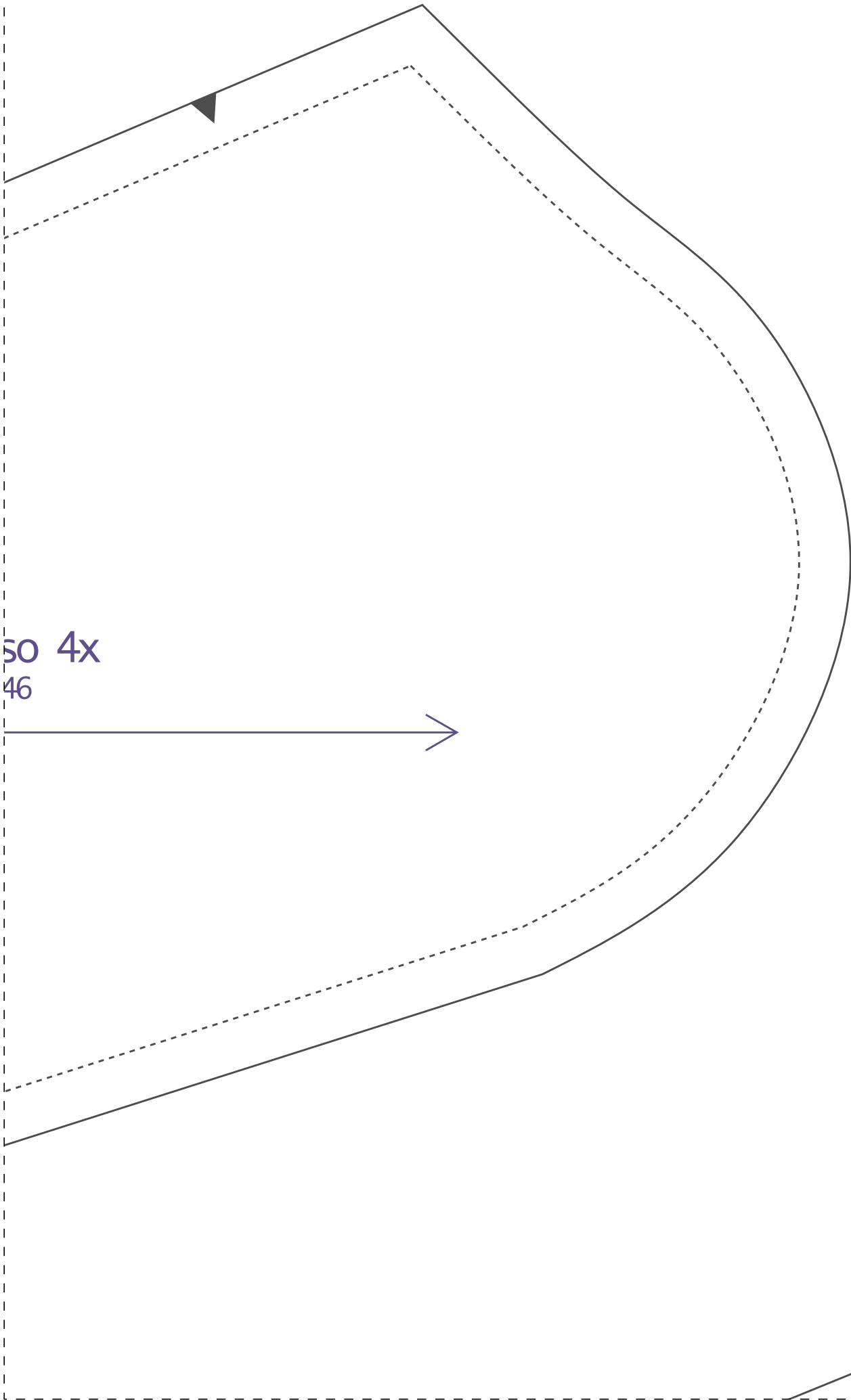


3-1

IDDED CDØ

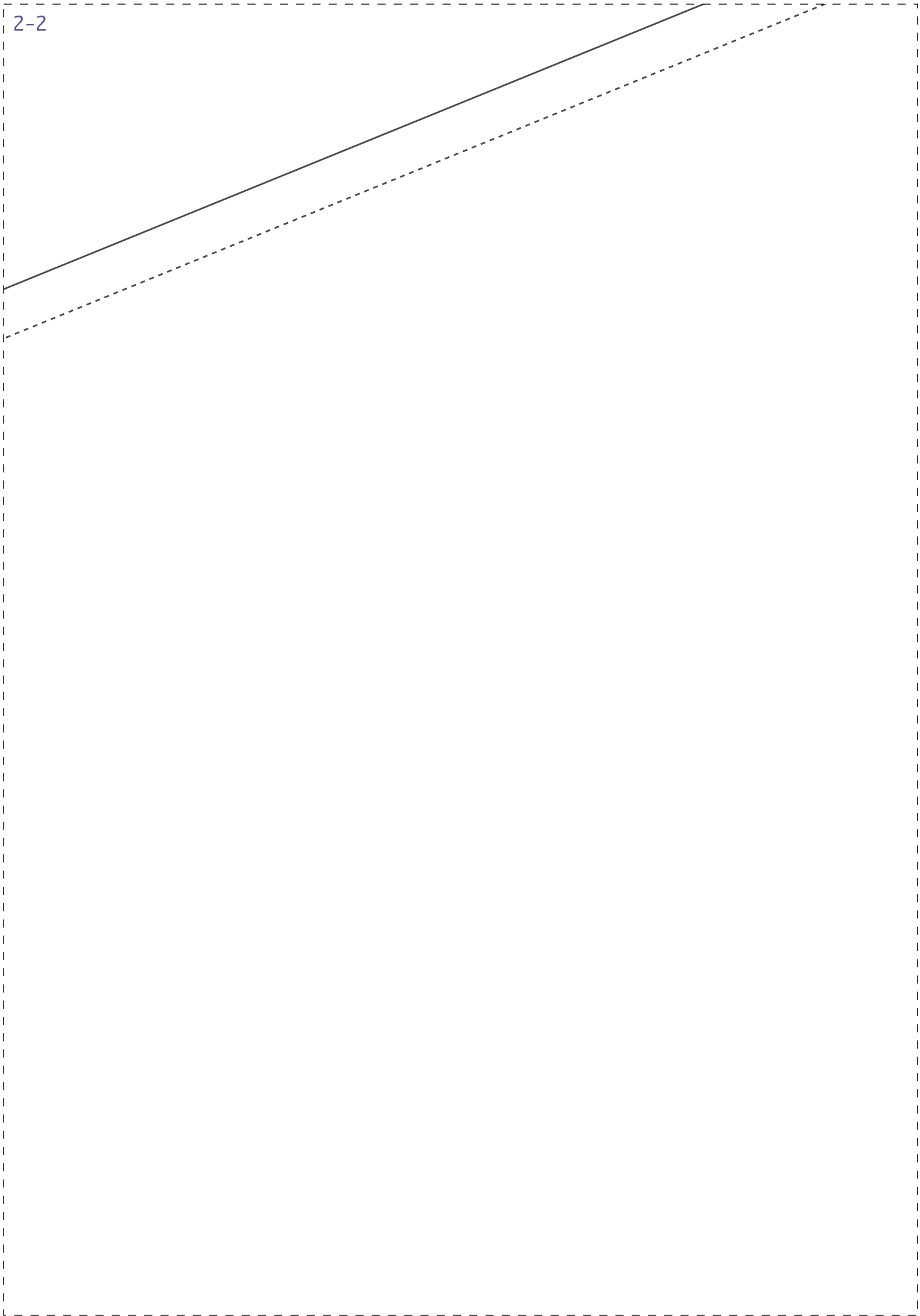


1-2



50 4x  
46

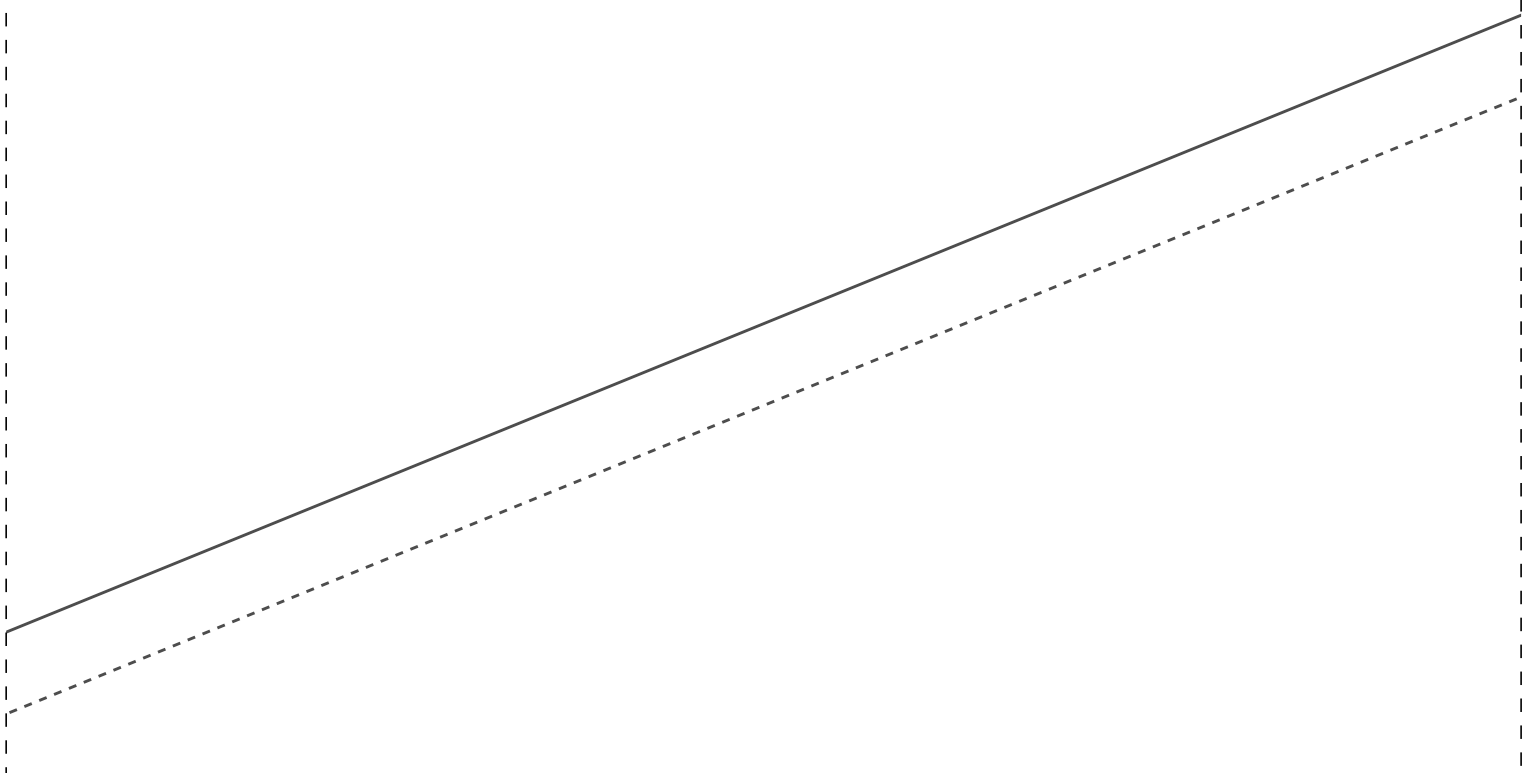
2-2



8



1-3

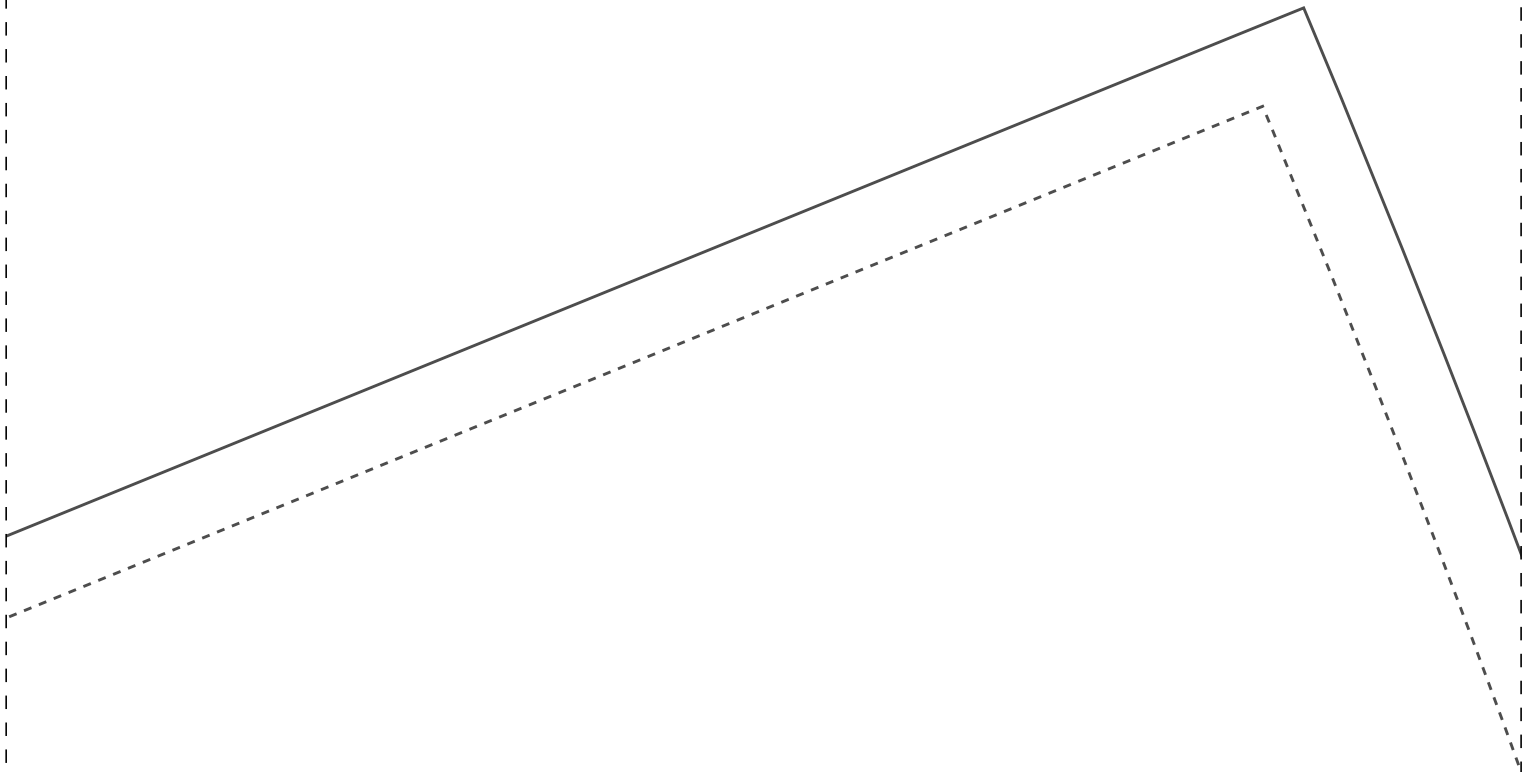






saia 2x  
46

дор





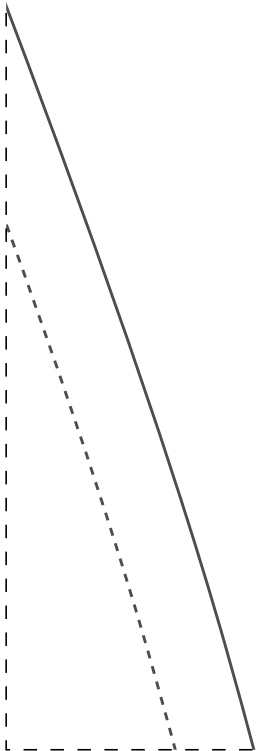
**FICHA TÉCNICA:**

- Tecido Plano 1,4m largura
- Viscose, viscolinho, linho, crepes, gabardine, ou similares
- Fechamento frontal com botões
- 2,80m para os tamanhos 36 ao 44
- 3,30m para os tamanhos 46 ao 54
- Botões
- Cortar elástico para a cintura:  
36-62cm/38-64cm/40-66cm/42-70cm  
44-74cm/46-78cm/48-82cm/50-86cm  
20-90cm/54-94cm



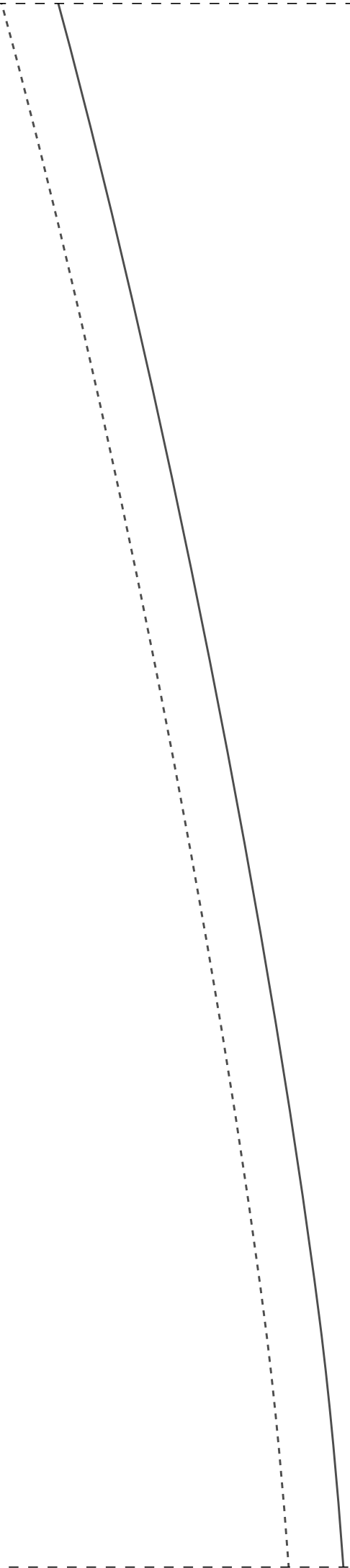
1-5

dobra

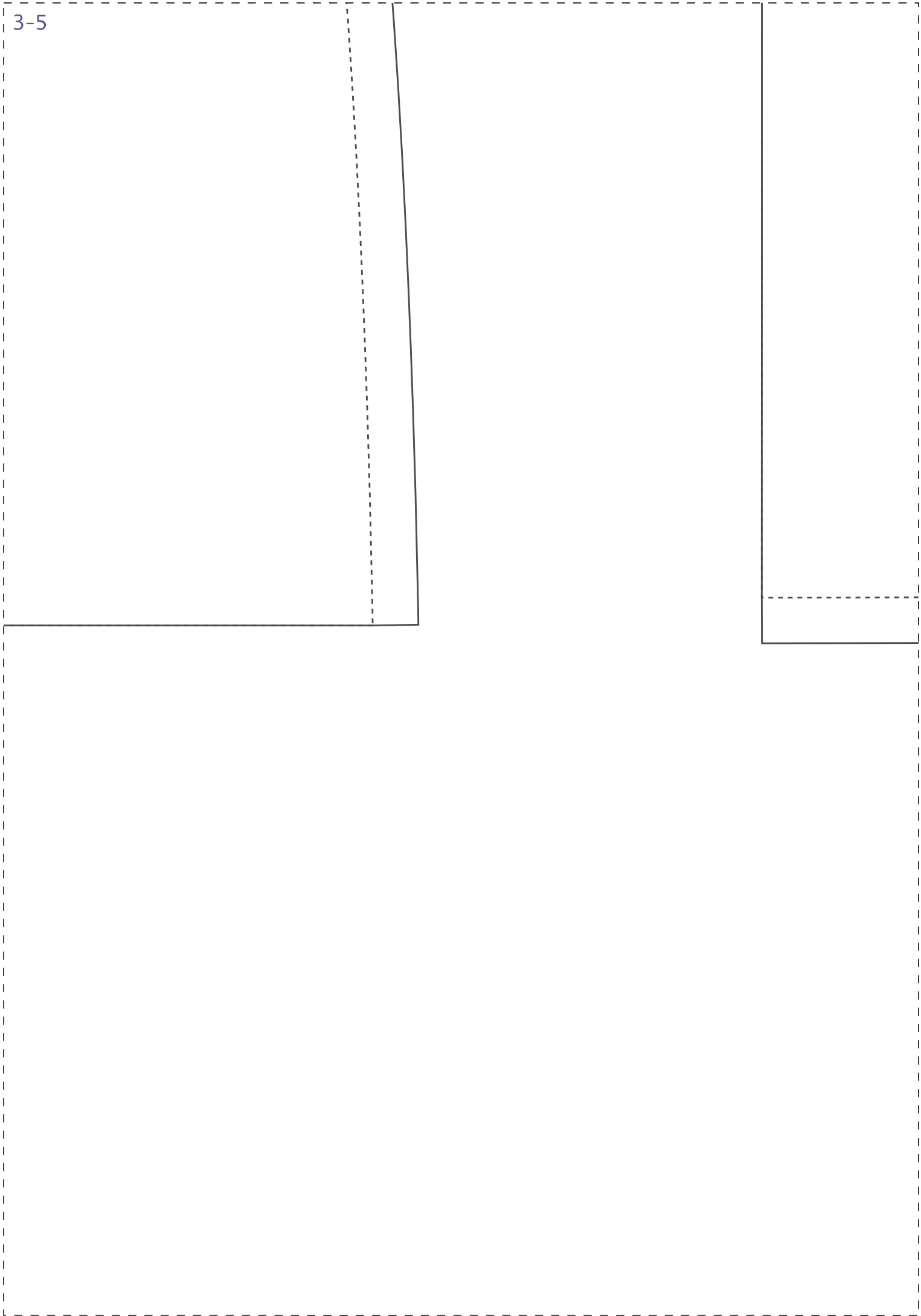


IDDED CD08

2-5



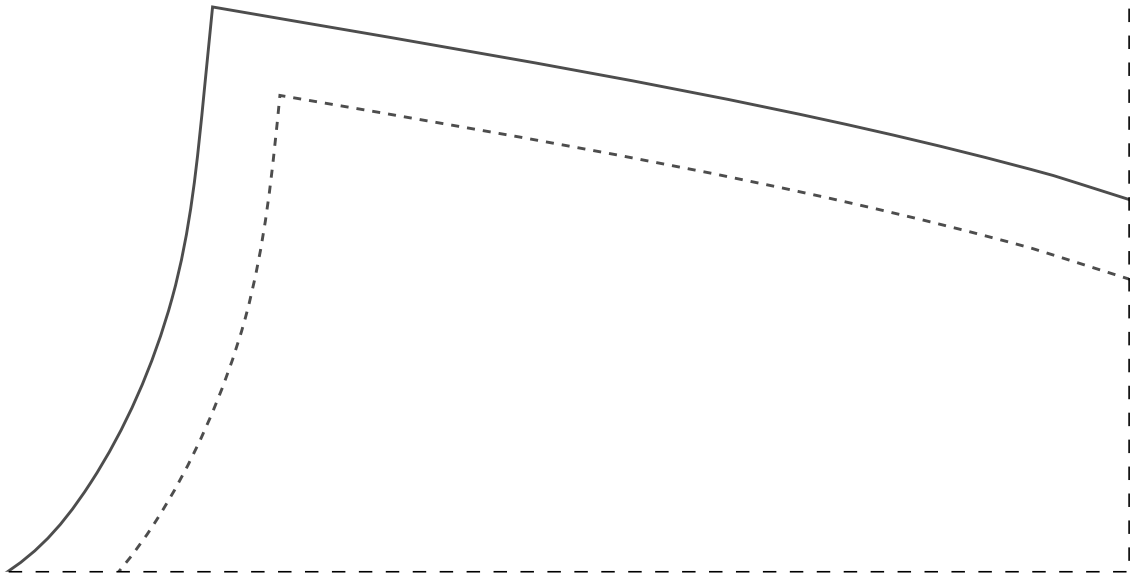
3-5



1-6

↓  
46  
2x  
golà  
pè

IDDED CD08





**Instituto Diana Demarchi  
Escola de Costurar  
Vestido Manga Japonesa e Bot  
PROIBIDA REVENDA**

frente 2x

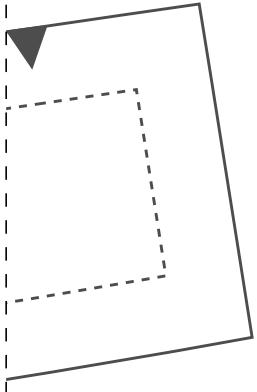
46

ões

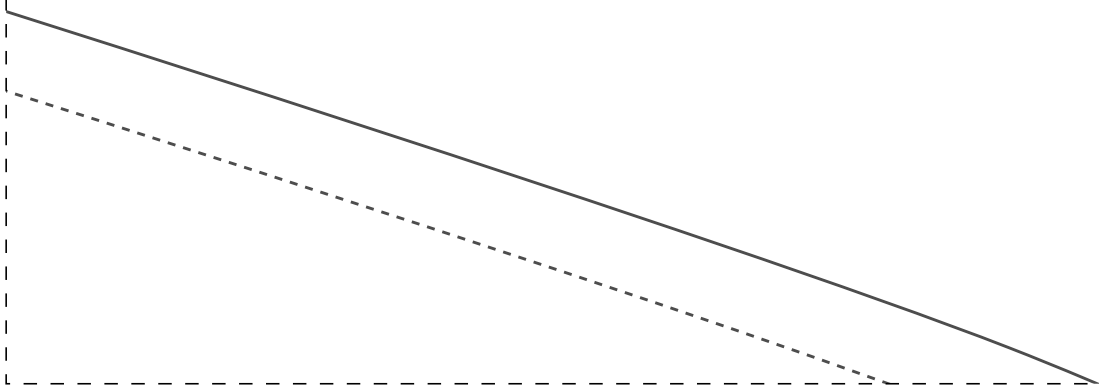
3-6

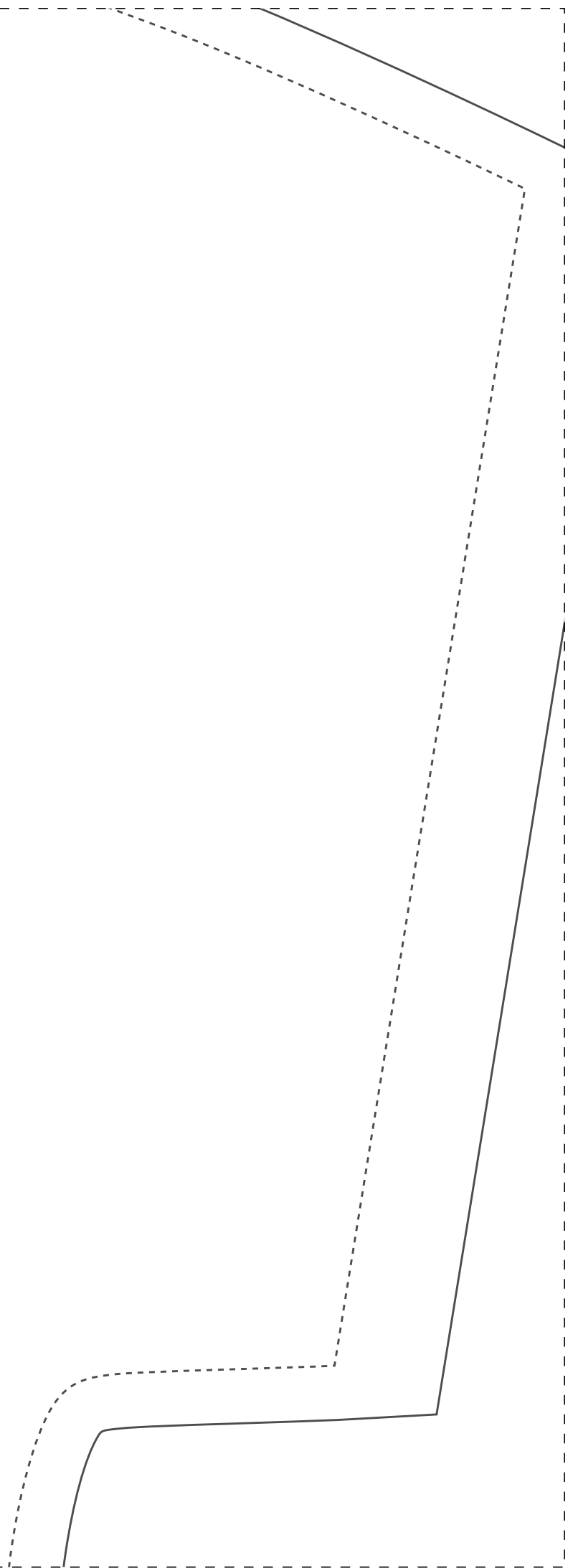


1-7

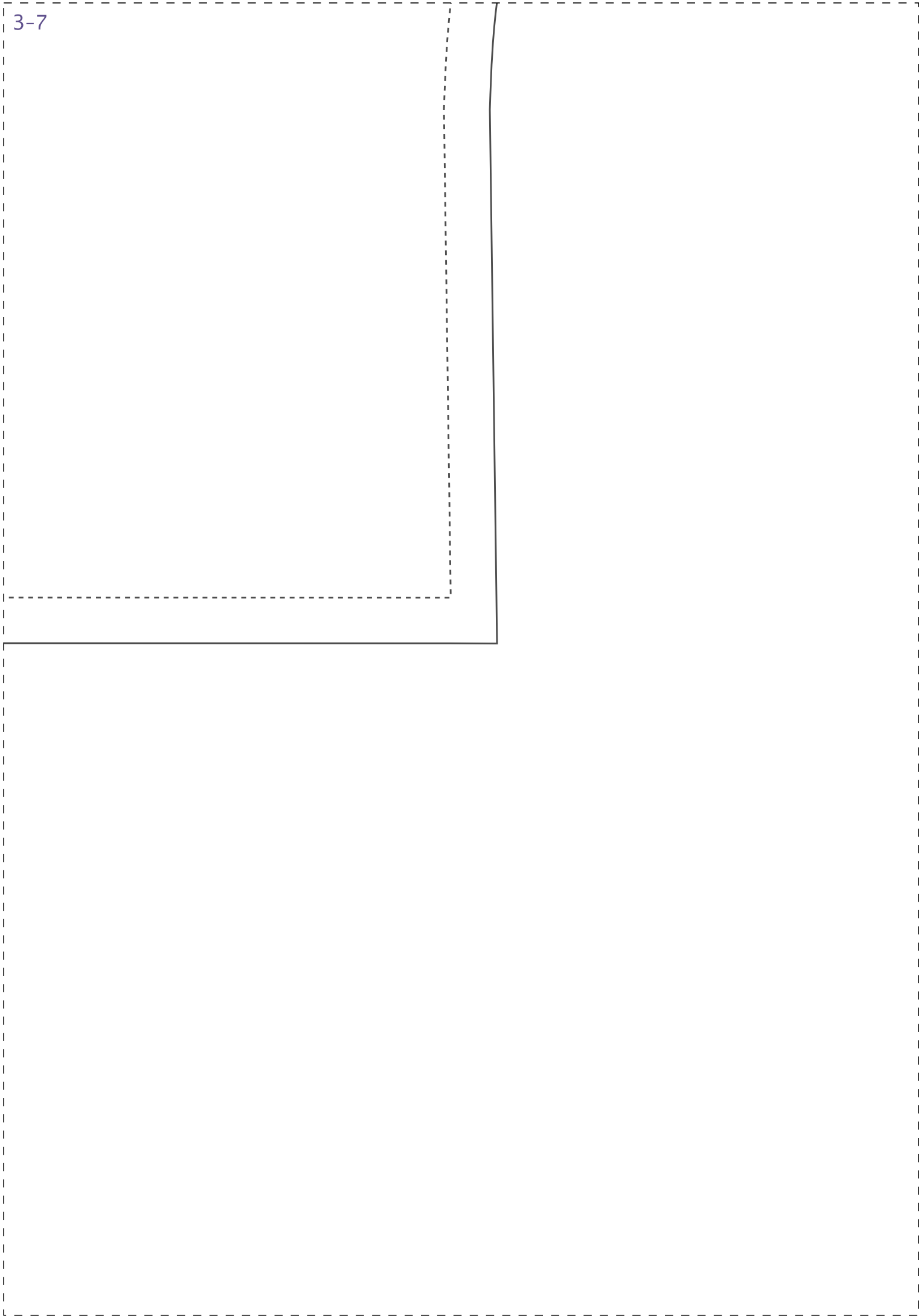


Teste  
molde  
a mes  
você  
impre

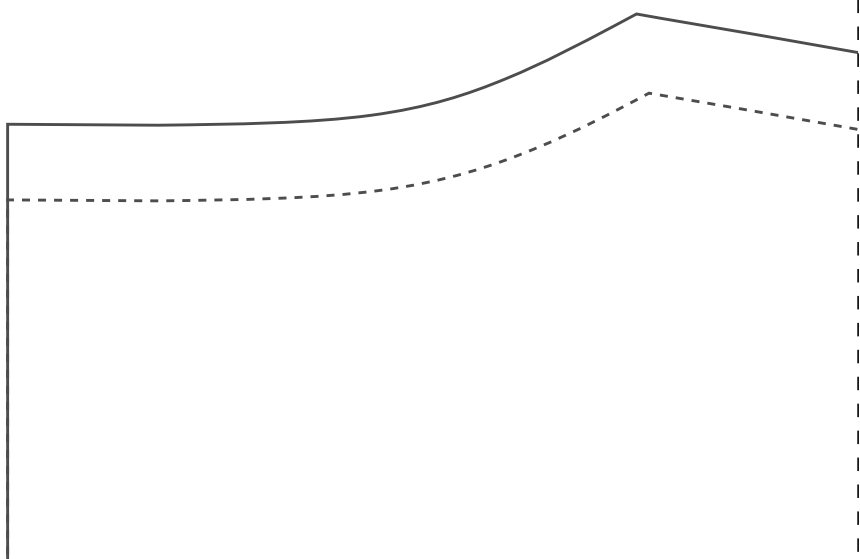
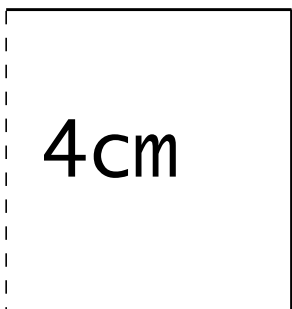




3-7



de impressão: ao imprimir seu  
meça o quadrado que deverá ter  
na medida informada (4cm), assim  
se certificará que ele foi  
tamanho correto.



---

costas 1x  
46

IDDEDCCD08

dobra



3-8

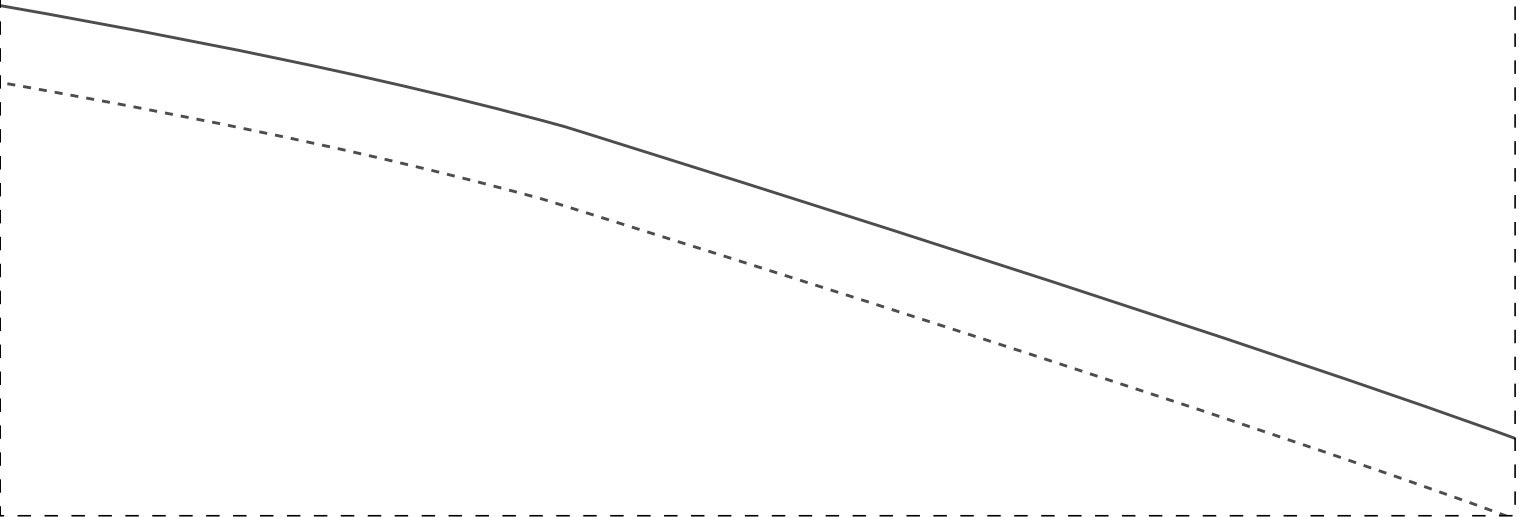


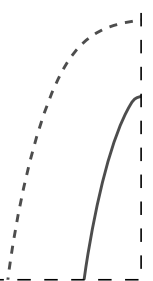


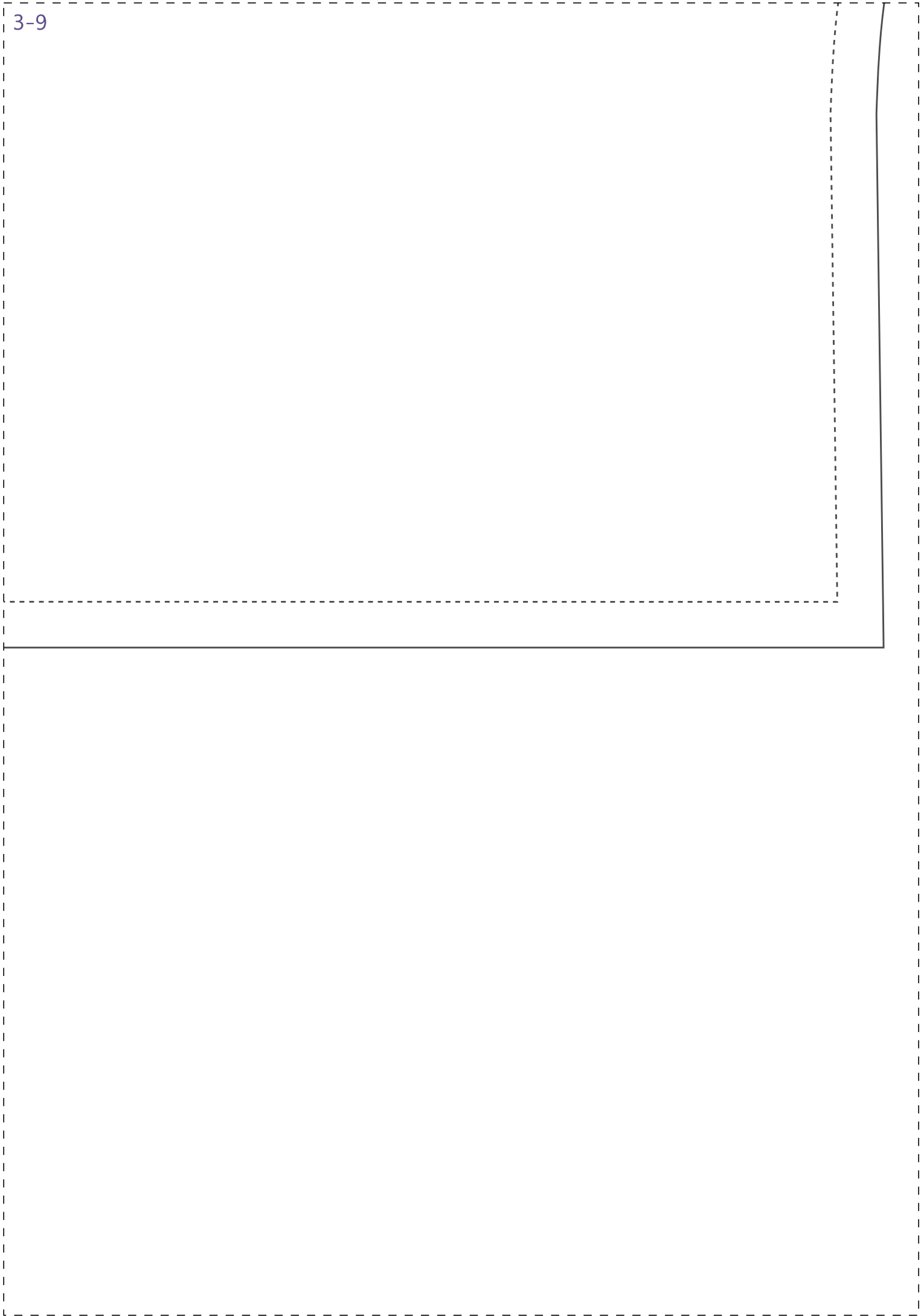
dobra

IDDED CD08

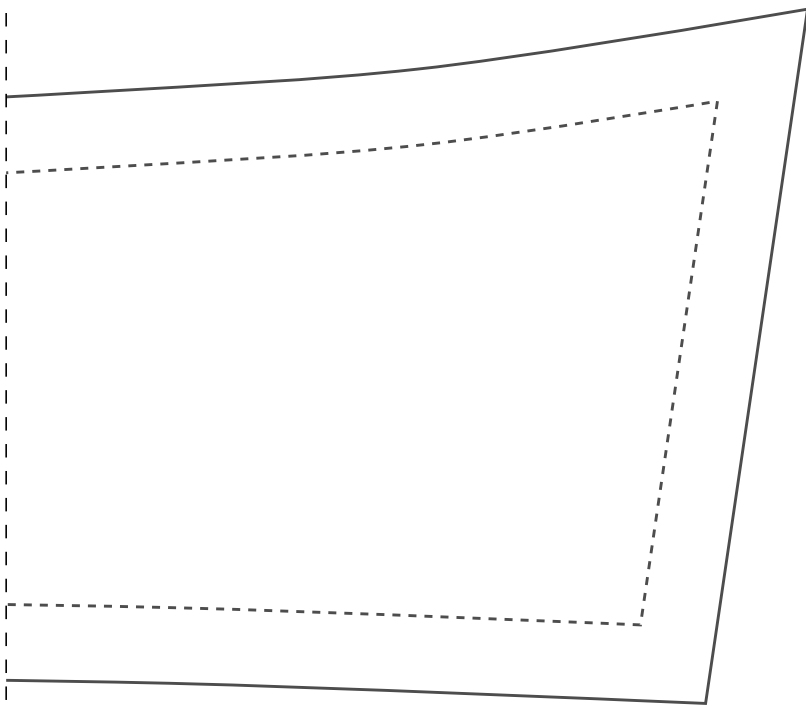
gol a 2x  
46







1-10



2-10

