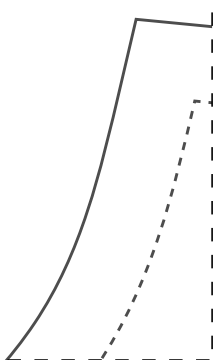
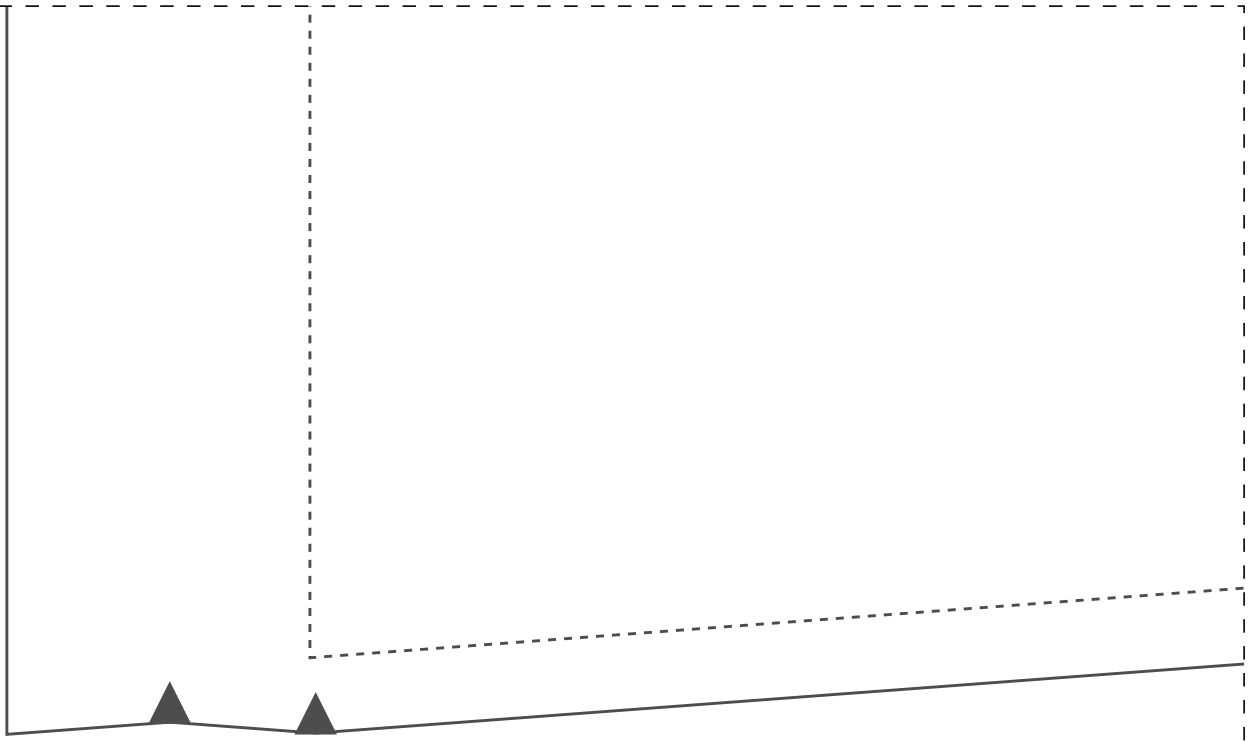


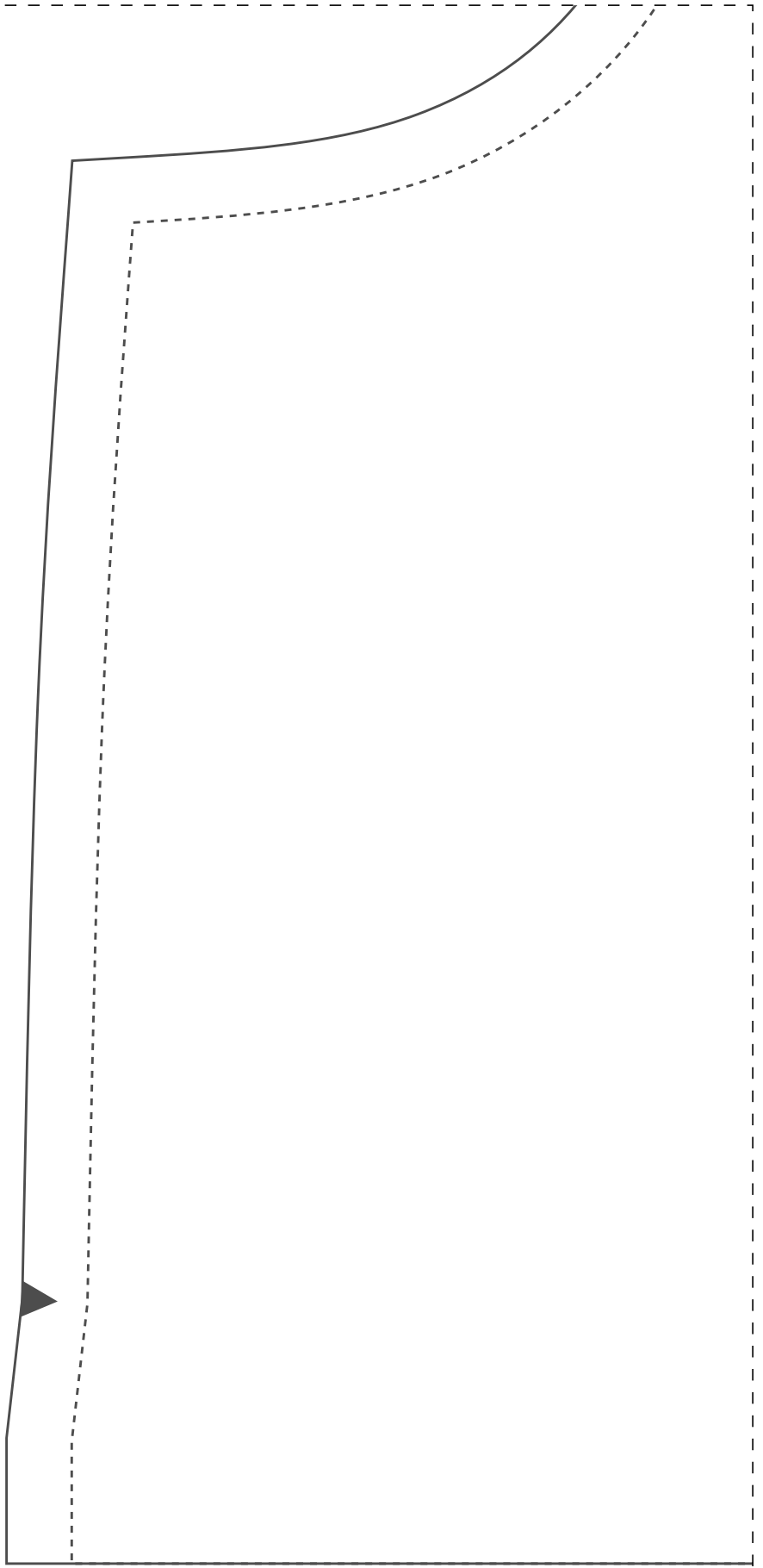
1-1



2-1



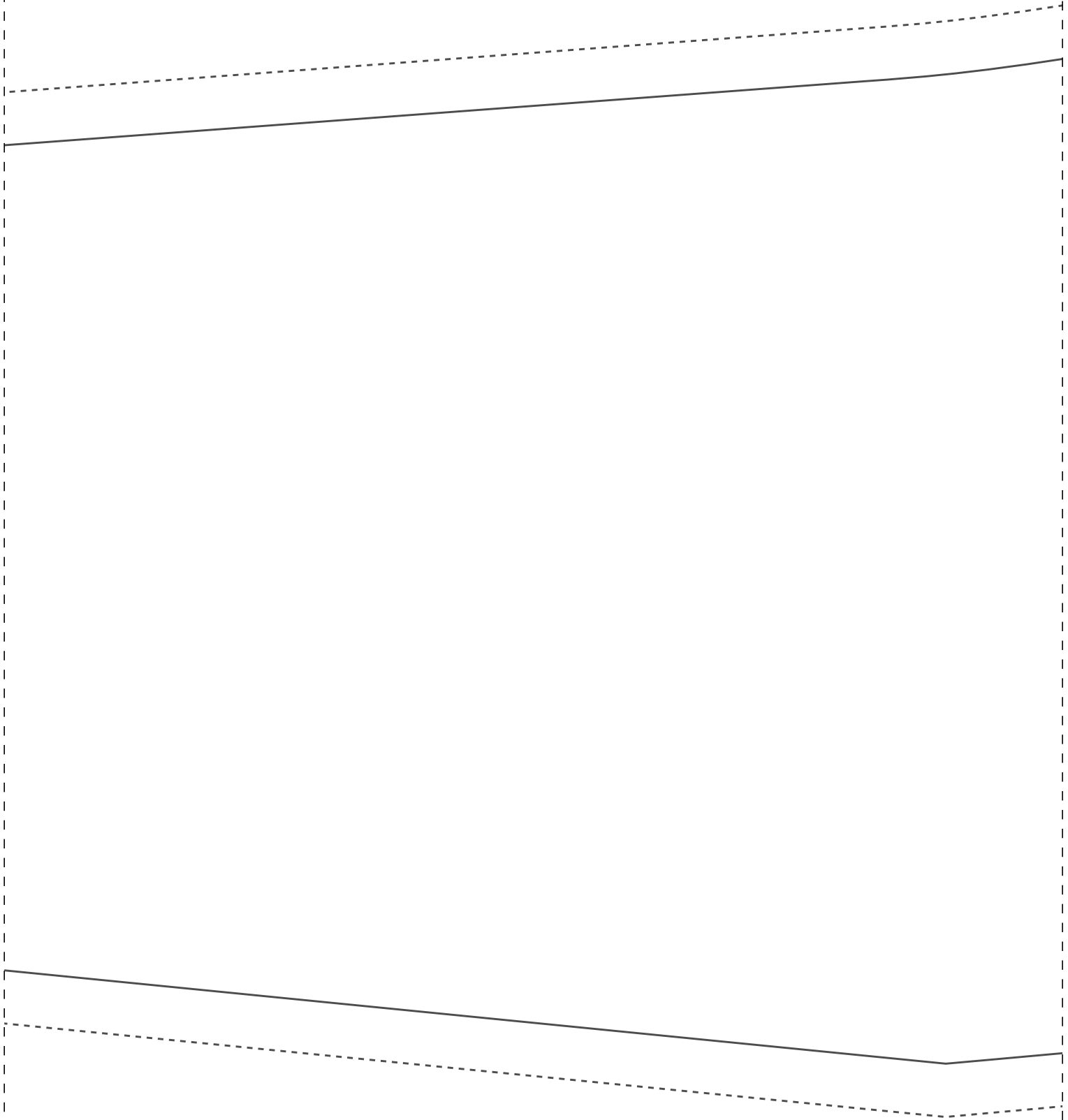
3-1



1-2



2-2



FICHA TÉCNICA:
-Tecido plano 1
-Viscose, visco
tencel, tricolli
-Pala dupla
-2m para os tam
-3,2m para os t

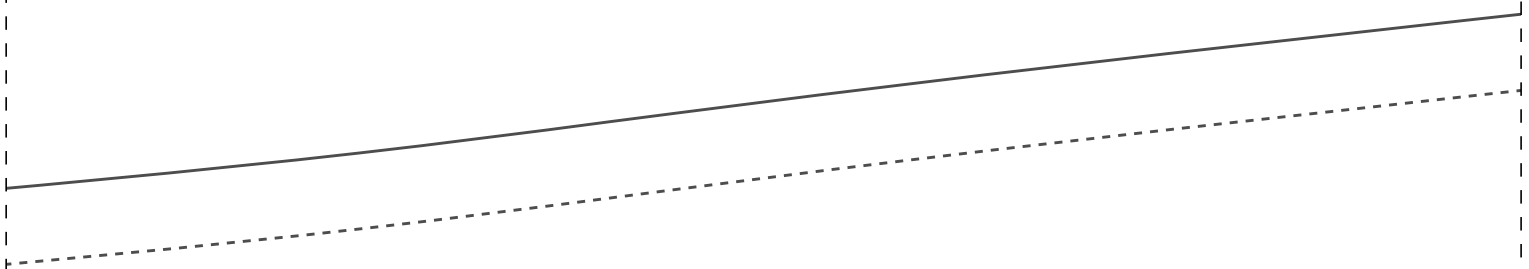
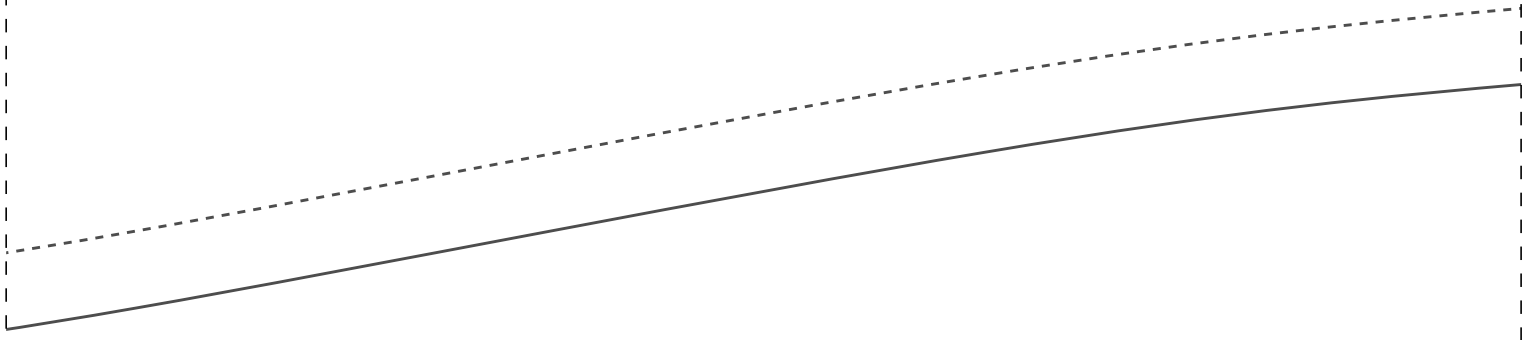
IDDED92

dobra

frente 1x
38

Demarchi
ar
rega
iantes

2-3



3-3

,4m largura
linho, linho,
ne ou similares

anhos 36 ao 44
pmanhos 46 A0 54

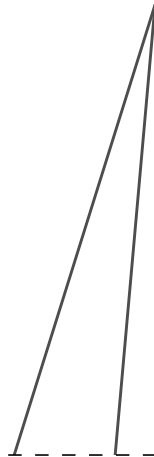
costas 1x
38

oJqop

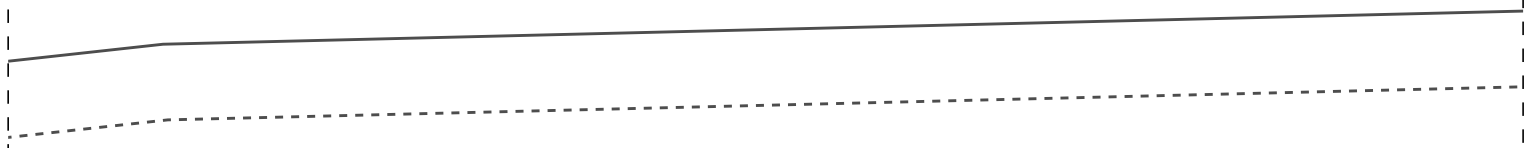
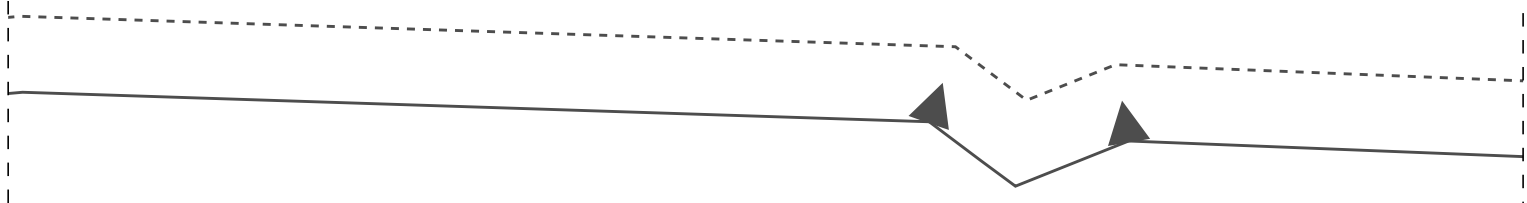
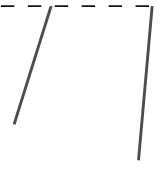
IDDED92

PROIBIDA REVENDA

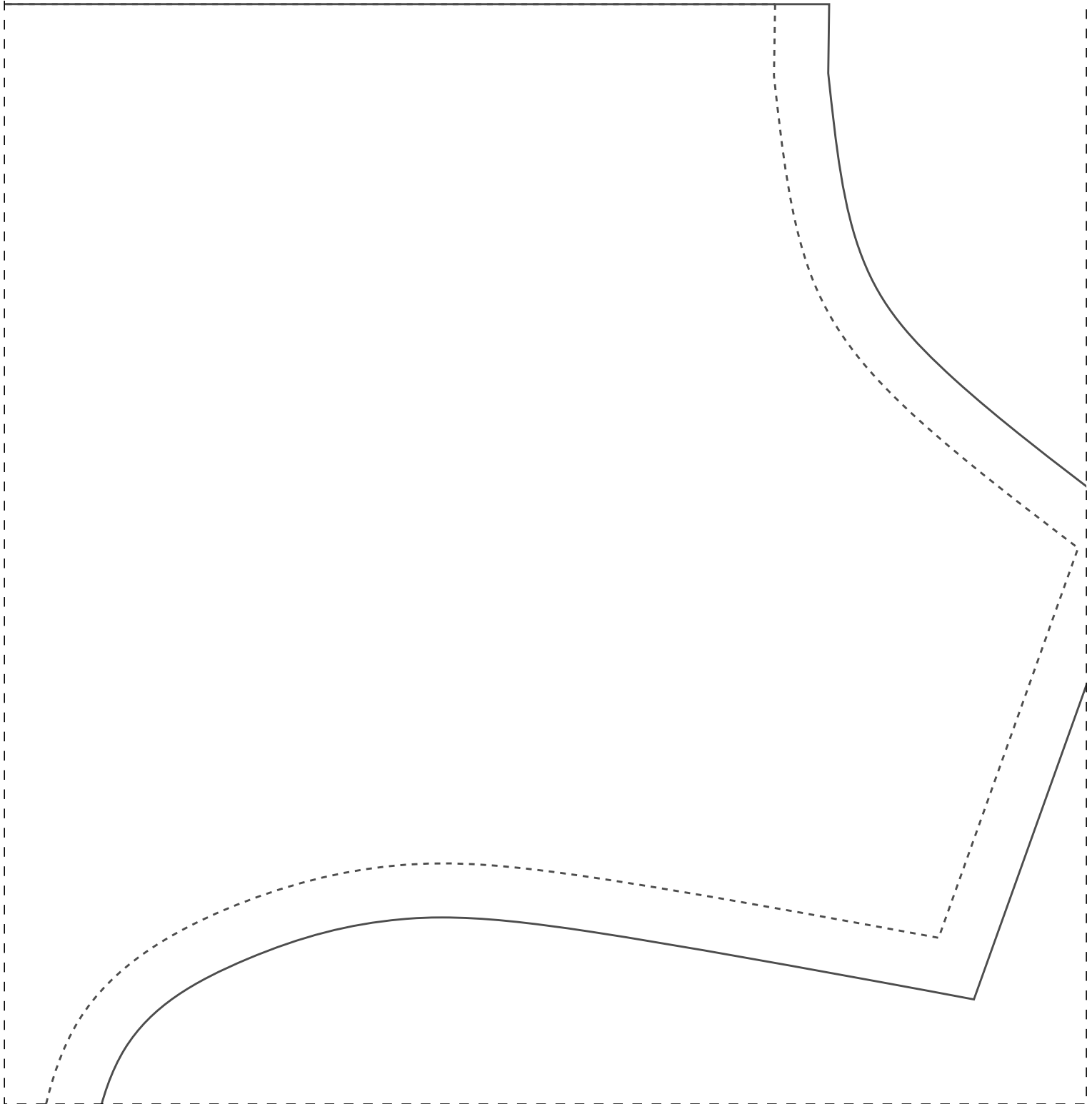
Instituto Diana
Escola de Costur
Vestido Pala e P
Costas para inic



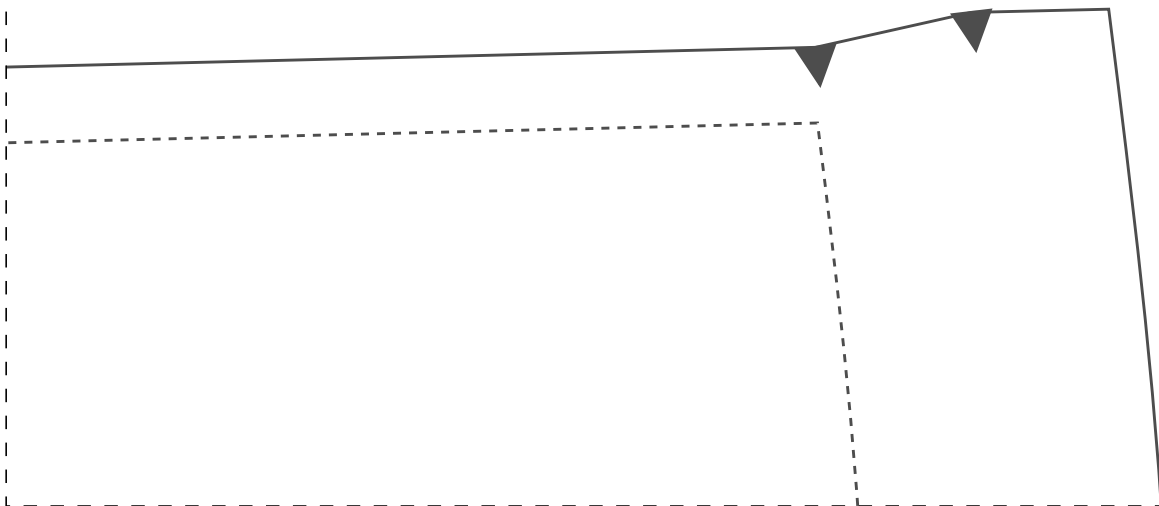
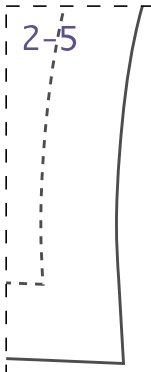
2-4



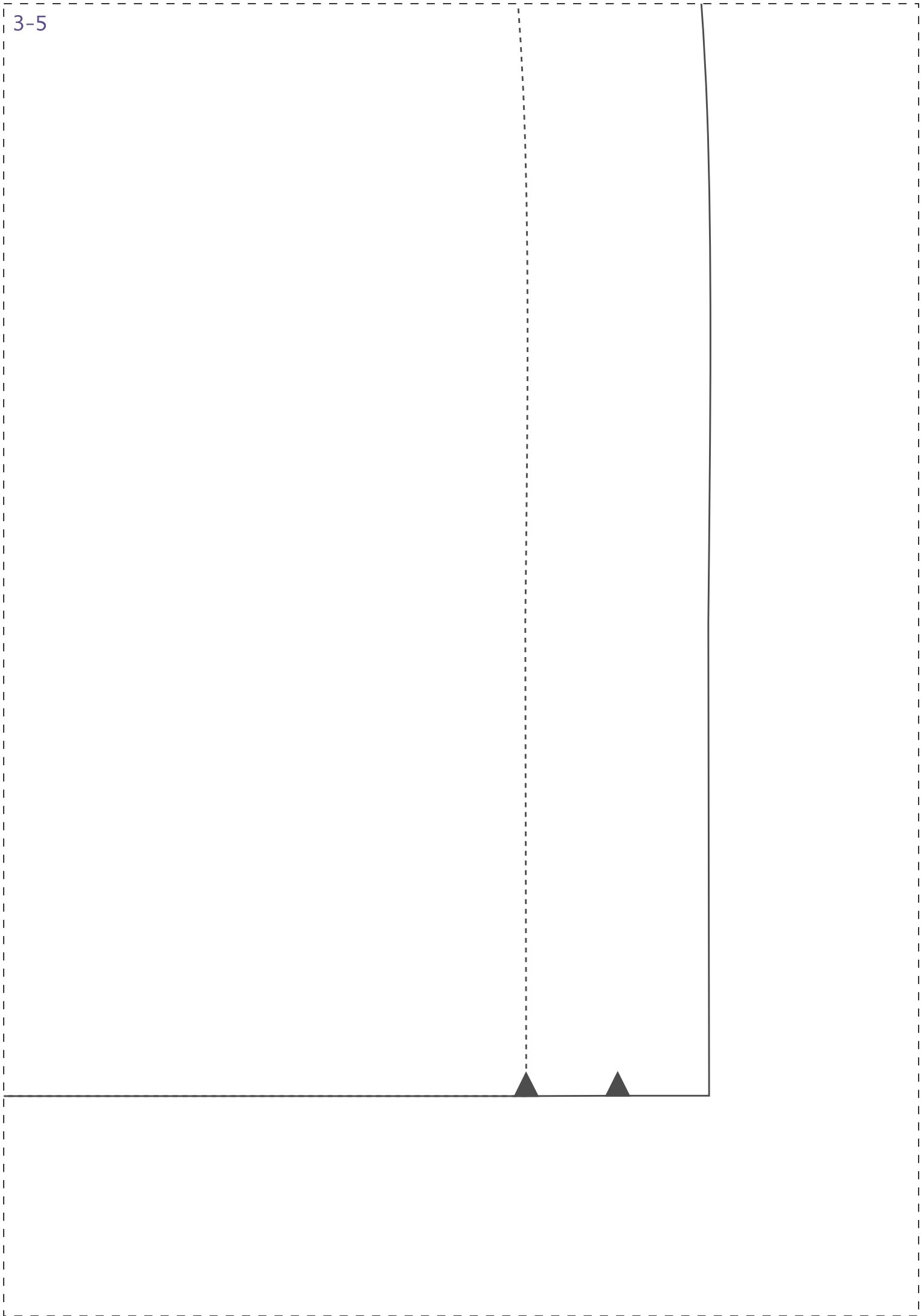


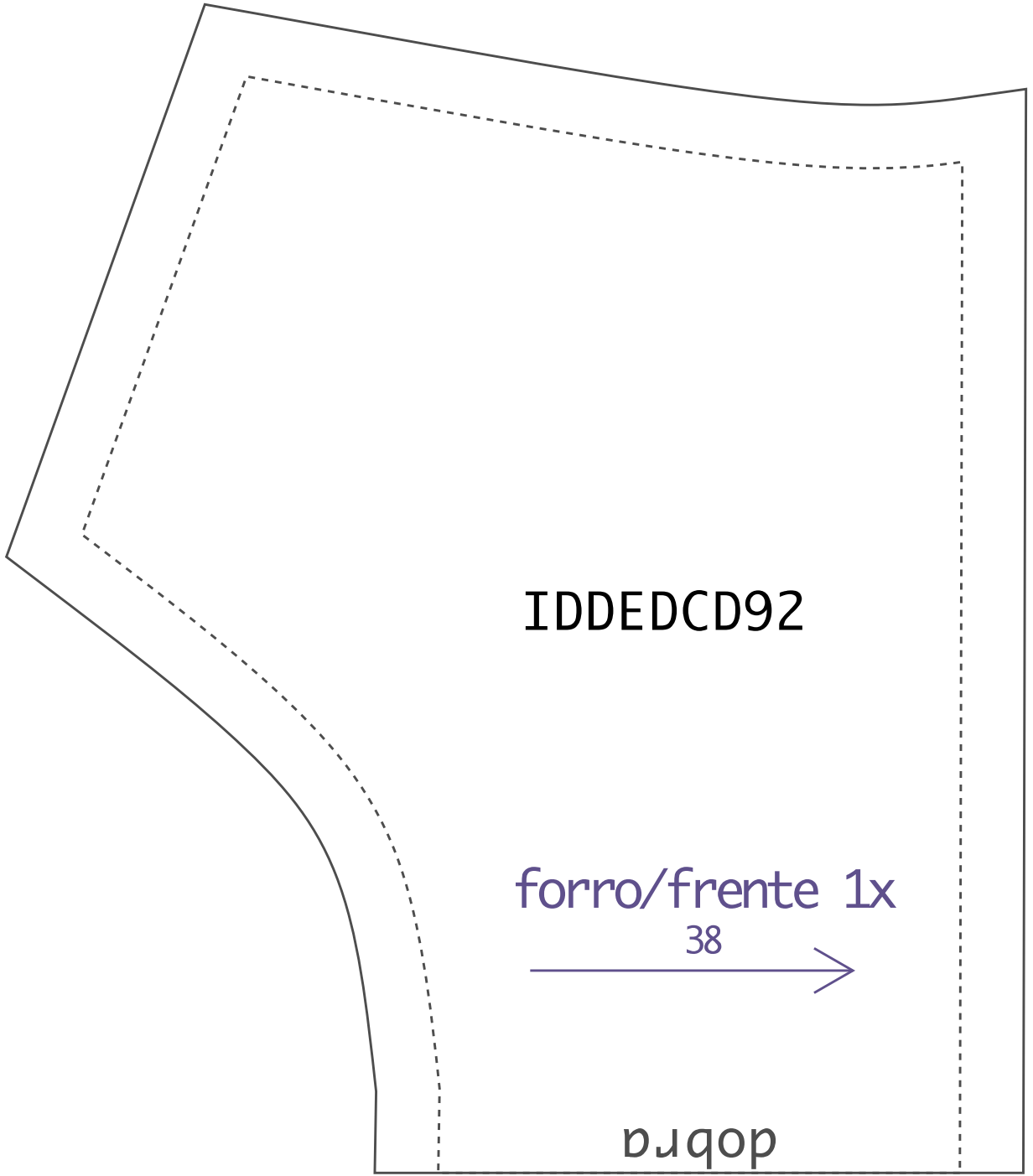


2-5

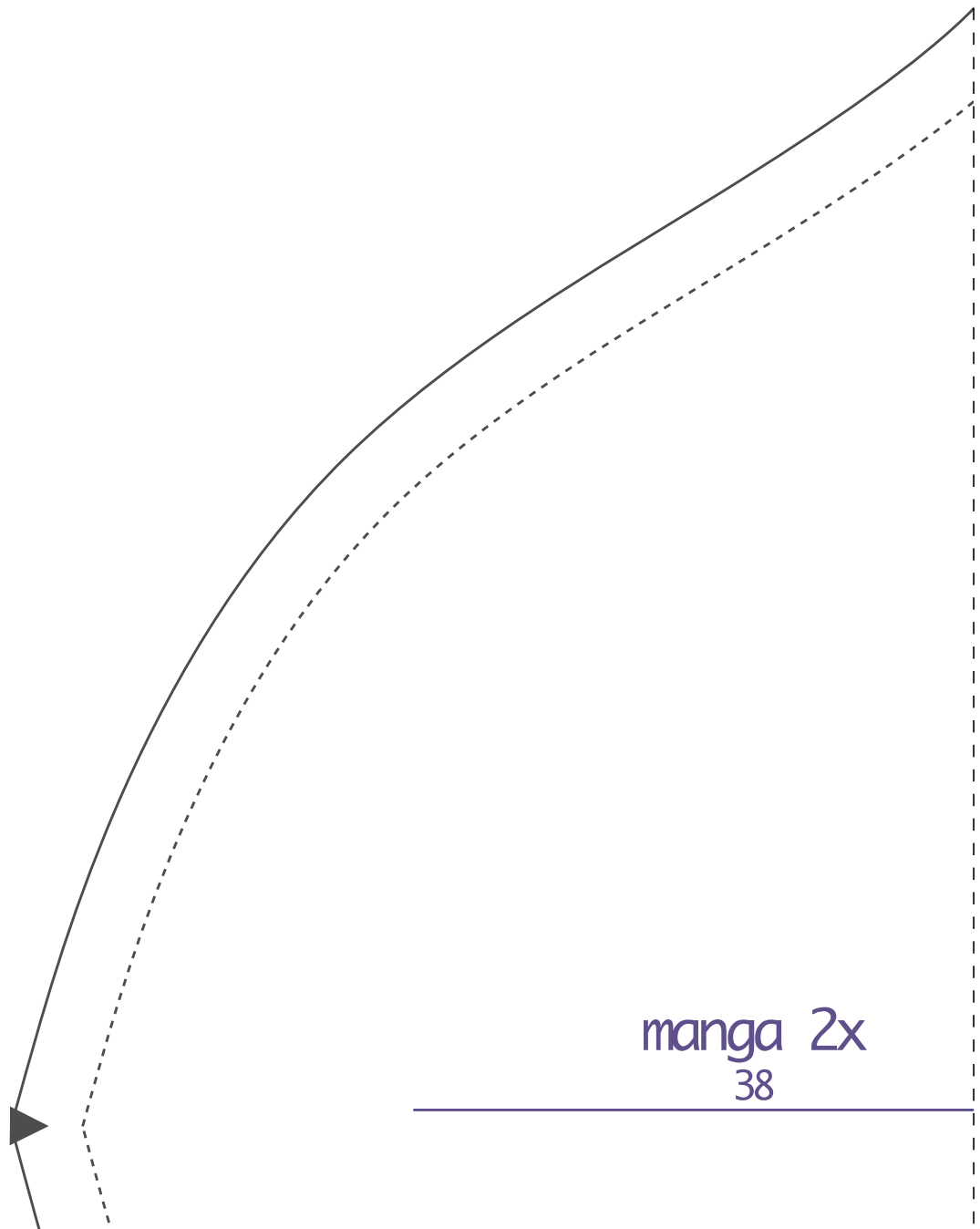
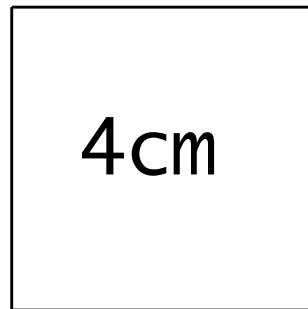


3-5



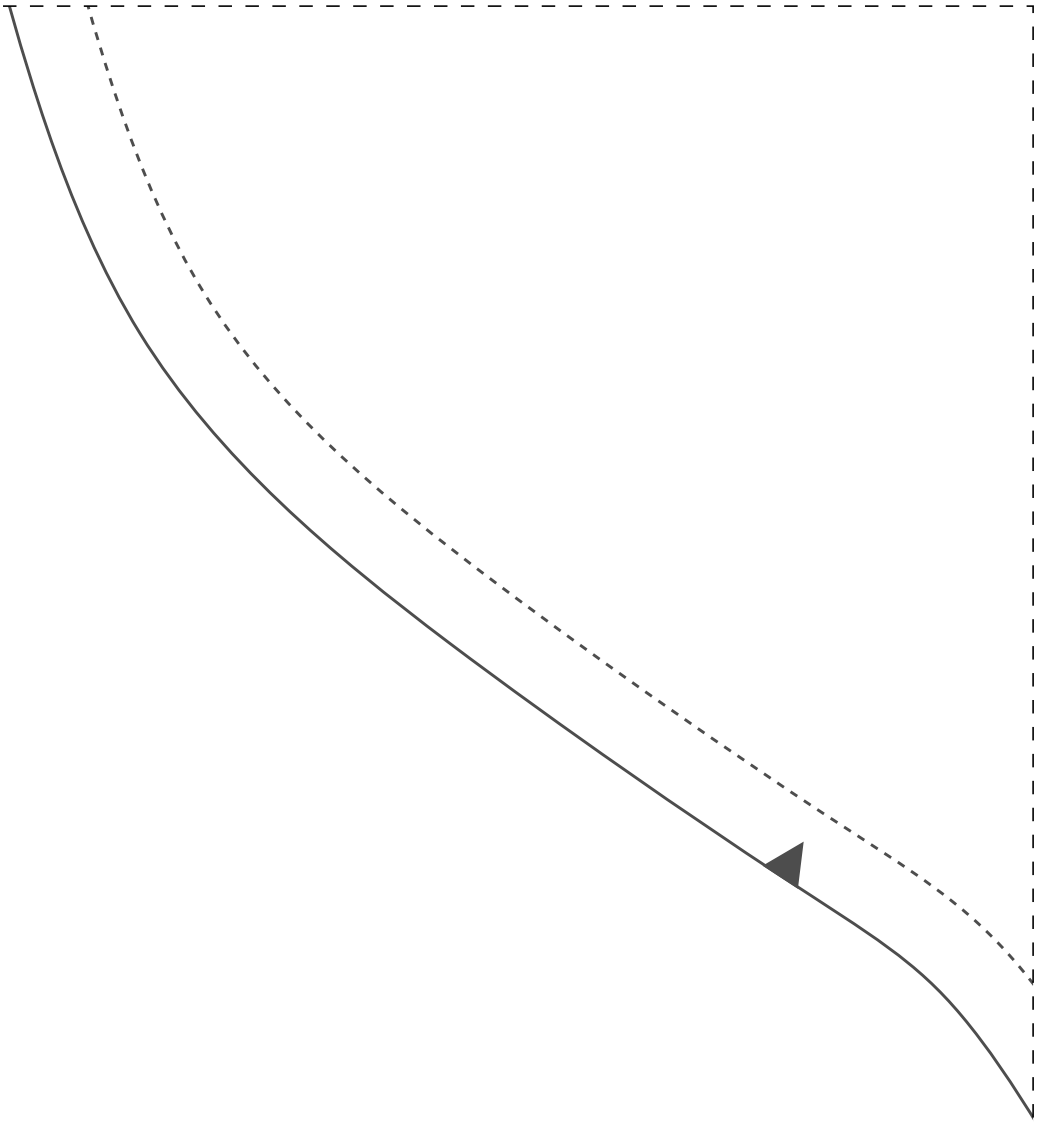


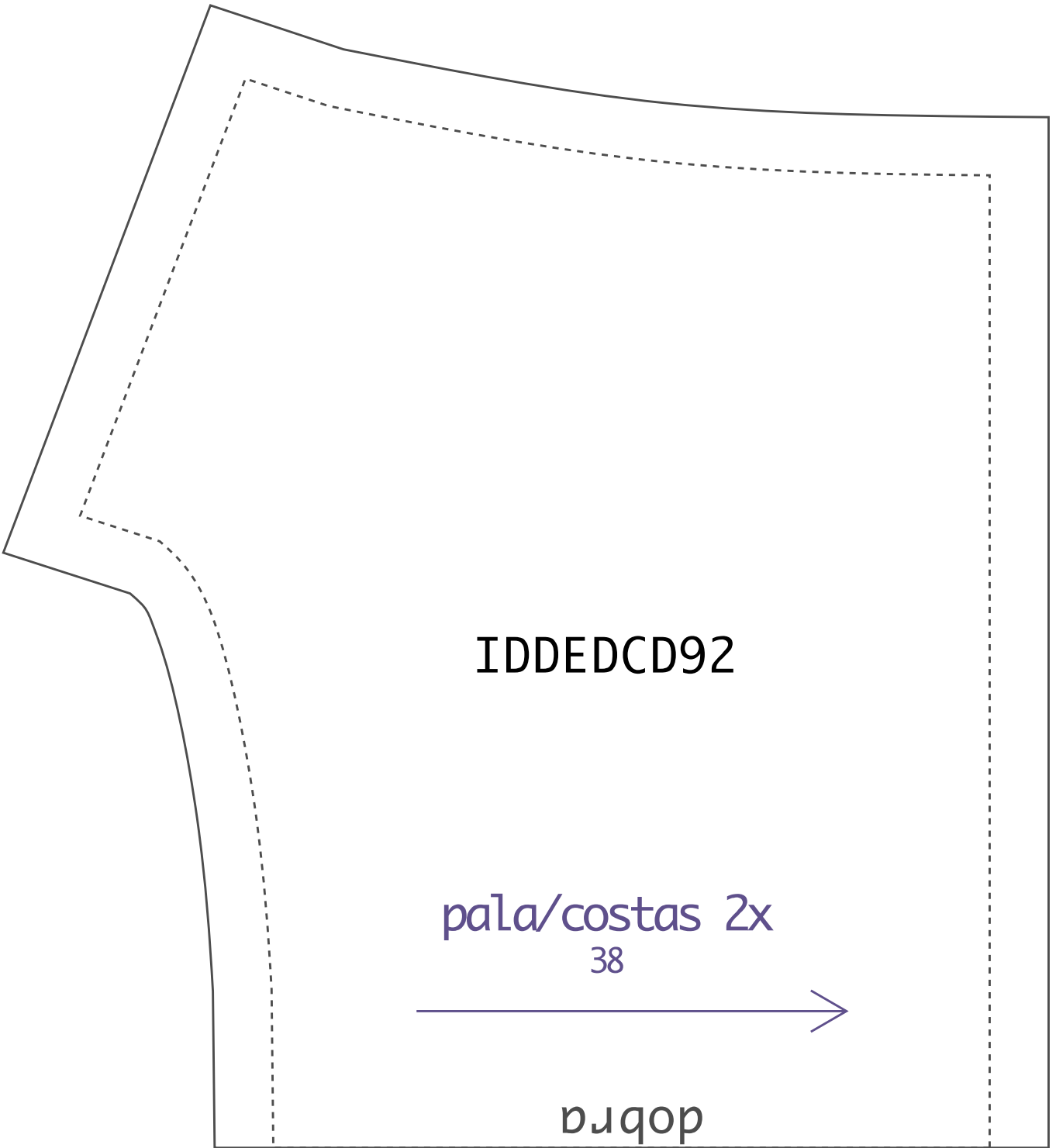
Teste de impressão: ao imprimir seu molde, meça o quadrado que deverá ter a mesma medida informada (4cm), assim você se certificará que ele foi impresso no tamanho correto.



manga 2x
38

3-6





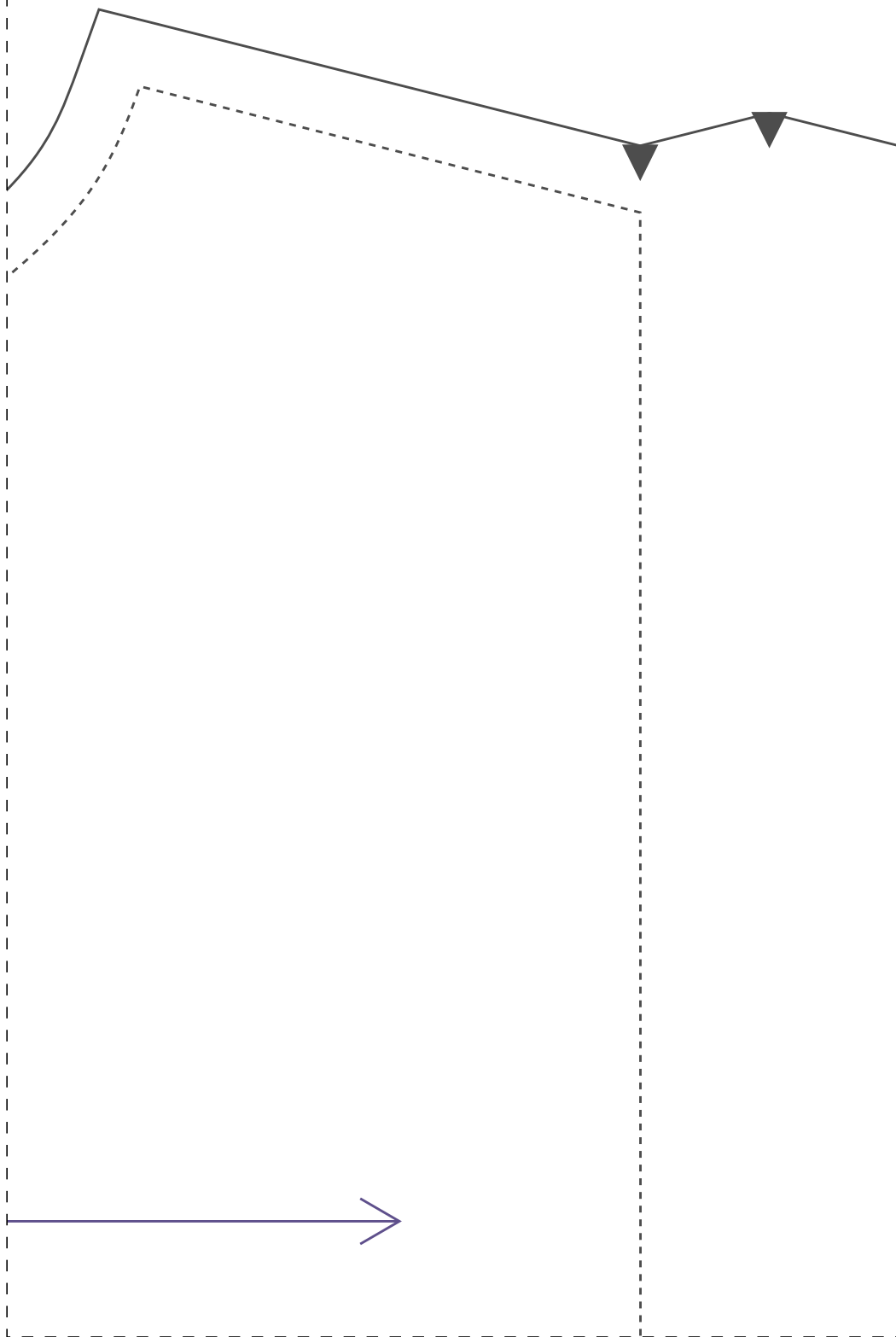
IDDED CD92

paLa/costas 2x
38



dobra

2-7



IDDEDCD92

