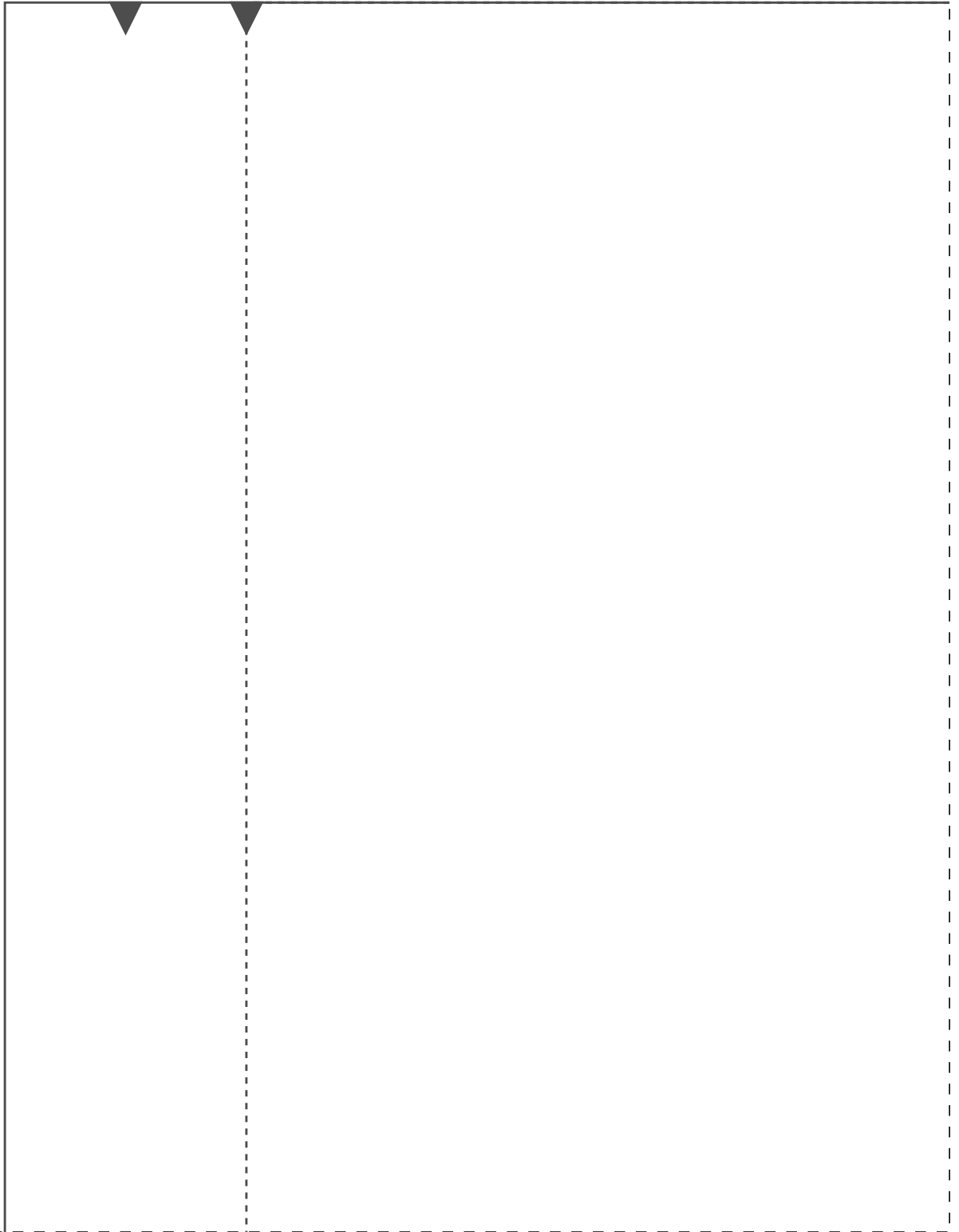
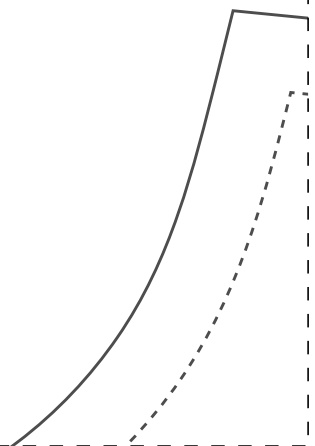
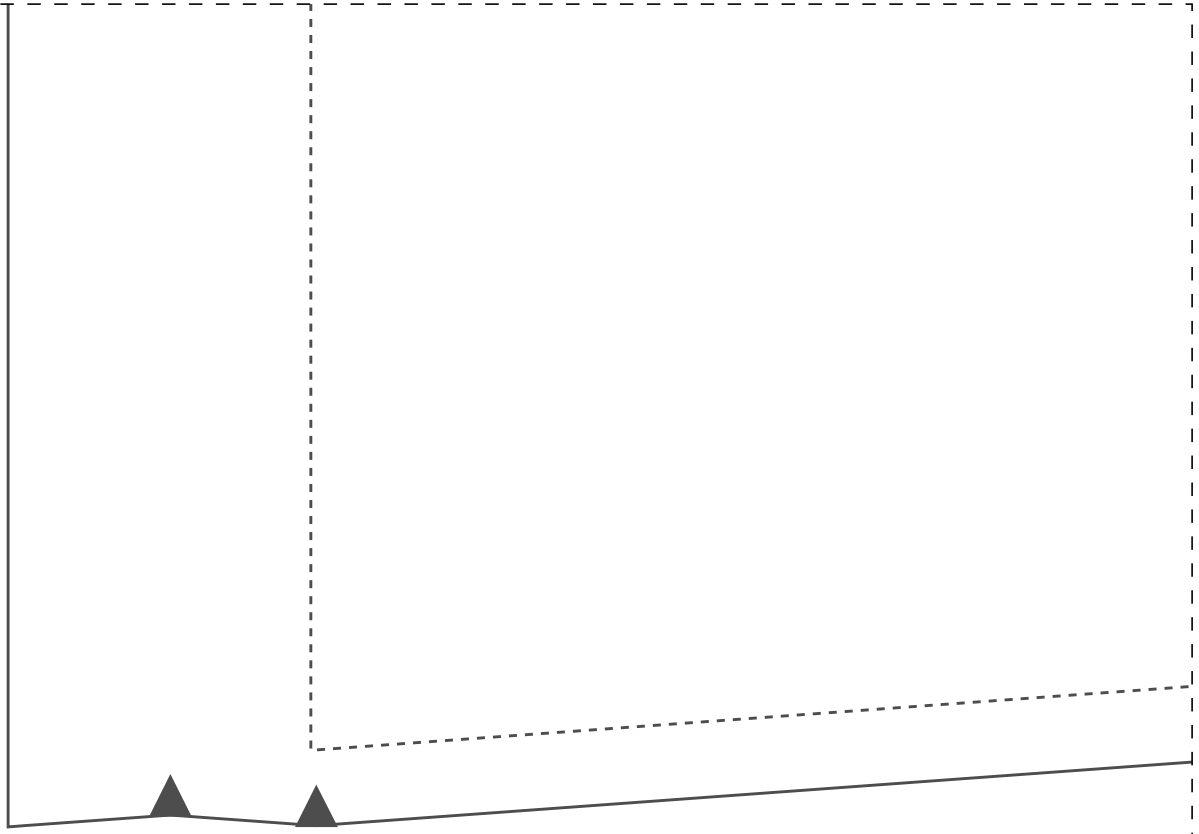


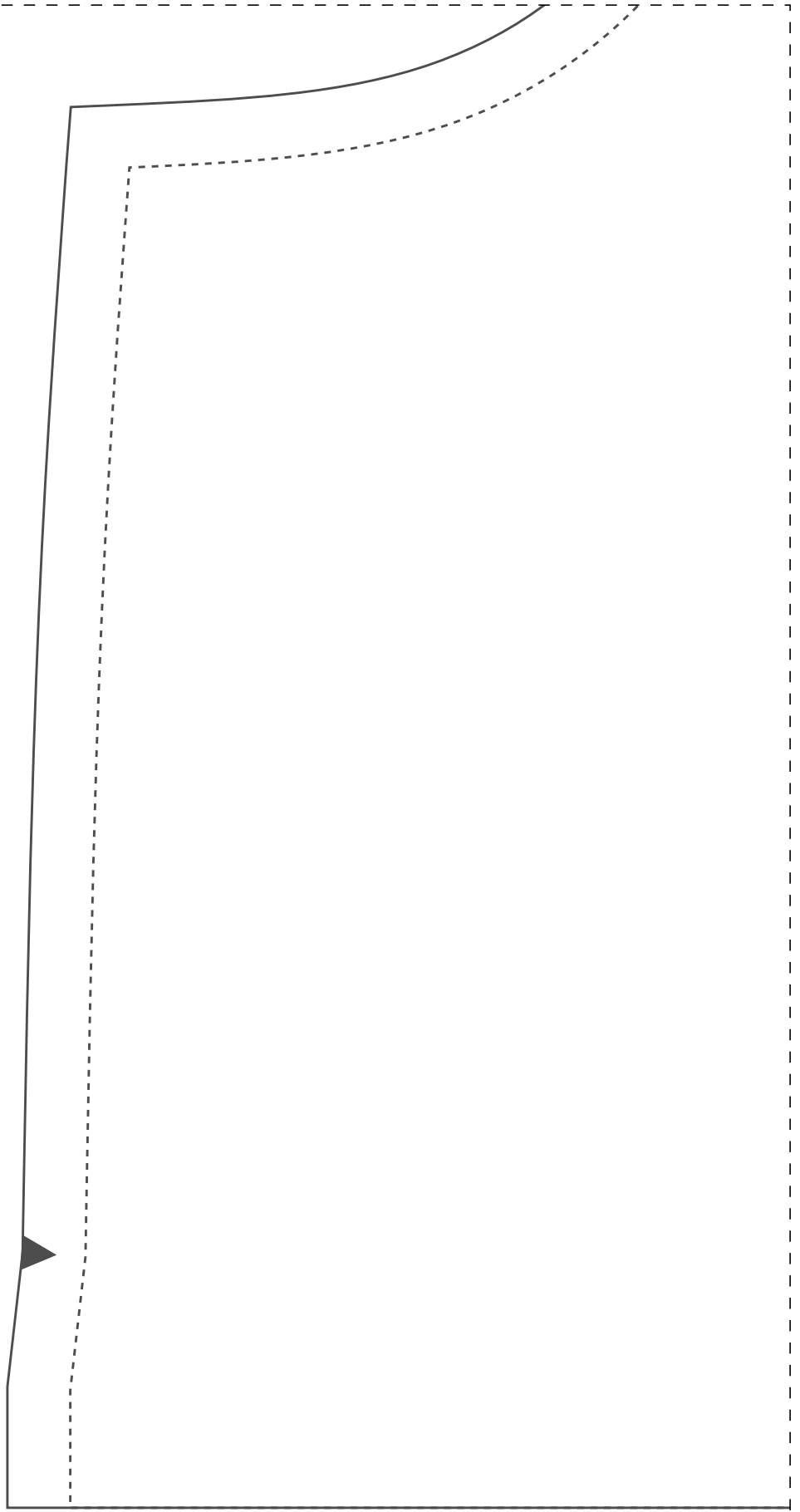
1-1



2-1

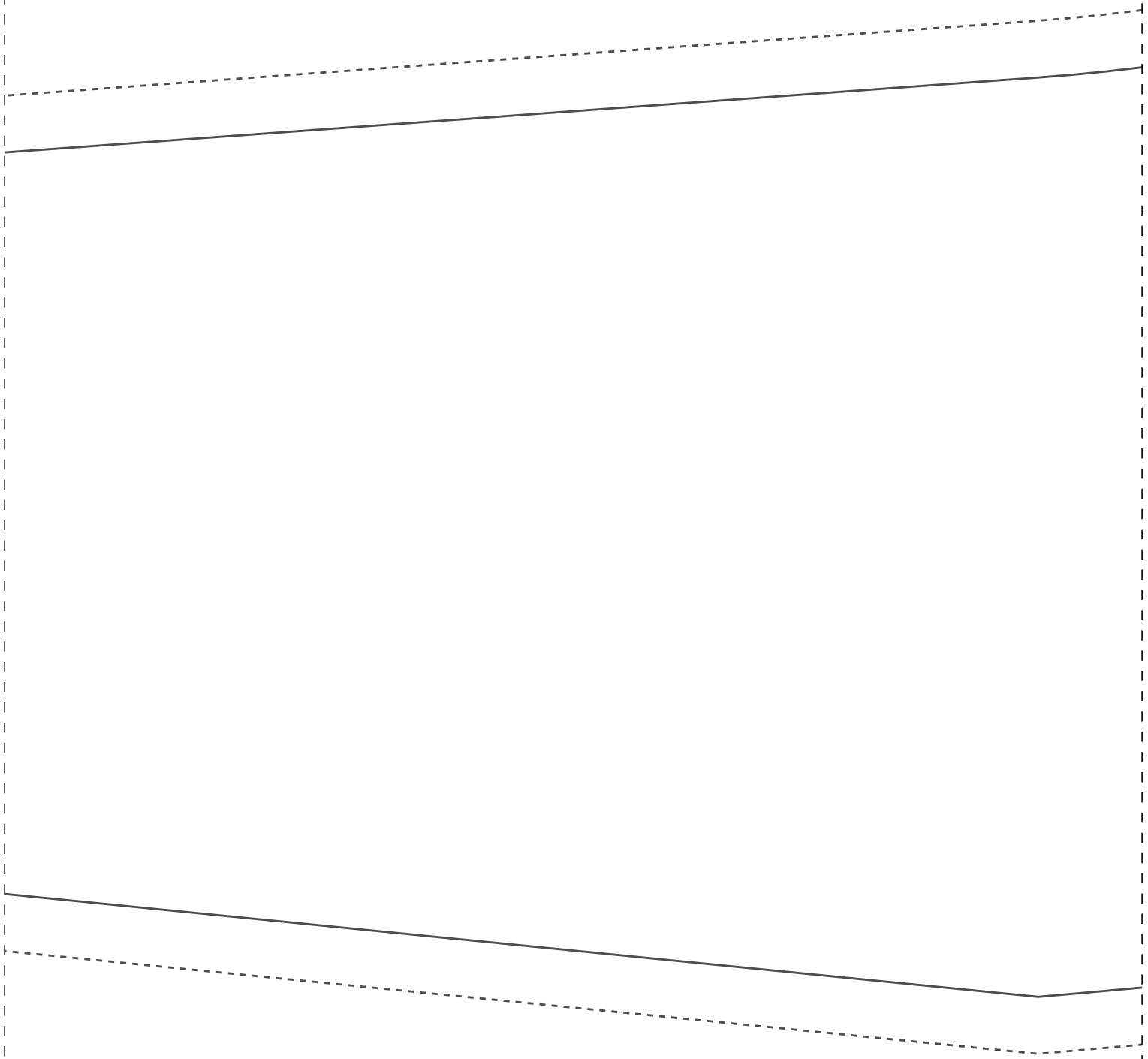


3-1



1-2





FICHA TÉCNICA:

- Tecido plano 1
- Viscose, visco
- tencel, tricolli
- Pala dupla
- 2m para os tam
- 3,2m para os t

IDDED92

---

---

1-3

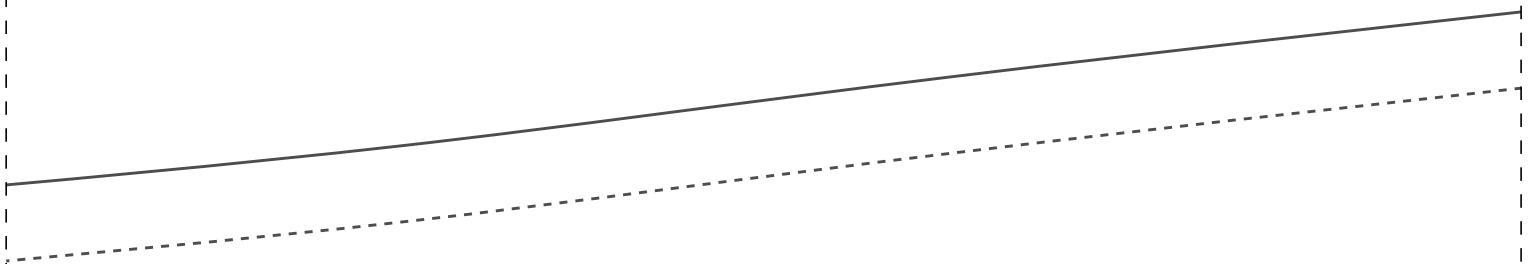
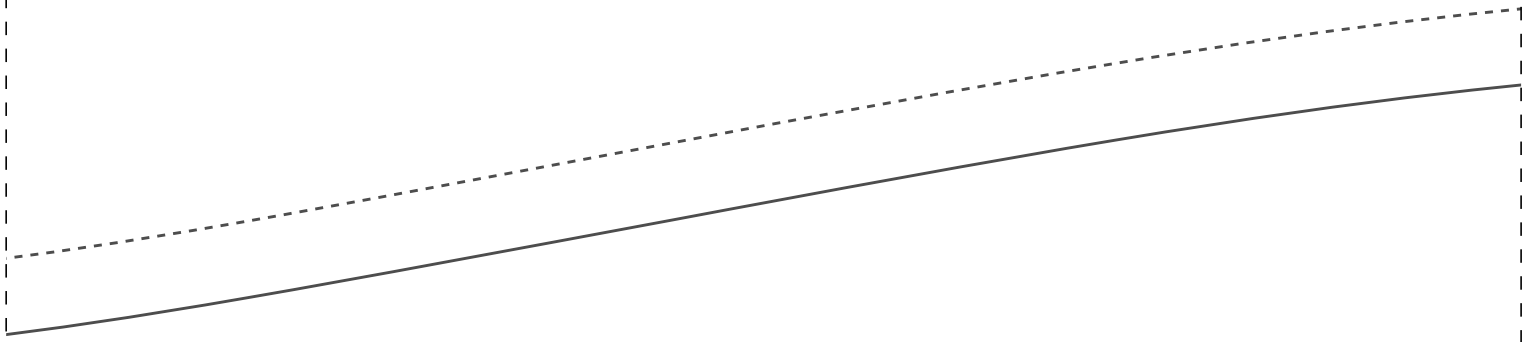
dobra

frente 1x  
40

es

rchi

2-3





3-3

,4m largura  
linho, linho,  
ne ou similares

anhos 36 ao 44  
pmanhos 46 A0 54

costas 1x  
40

dobra

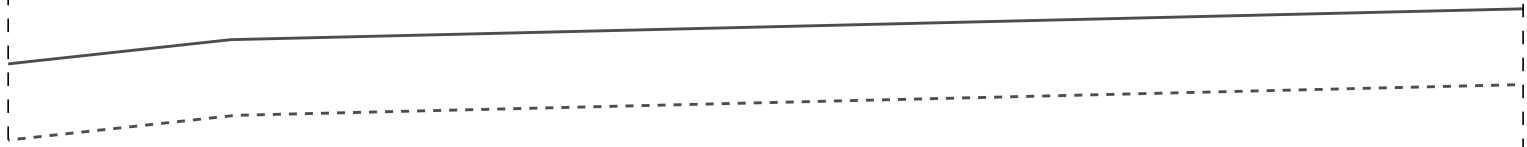
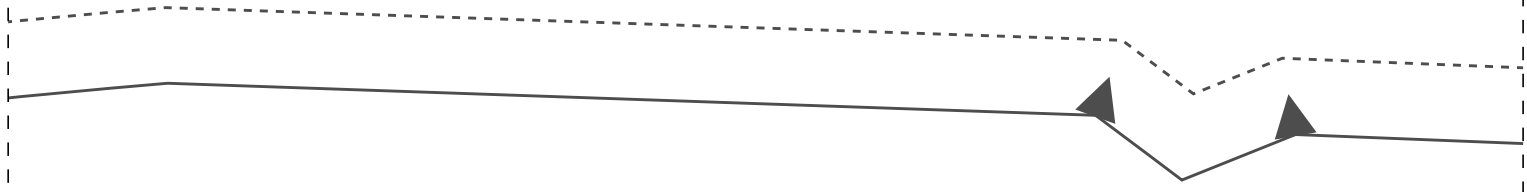
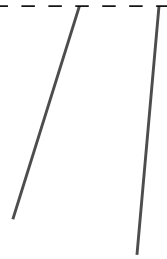
IDDEDCCD92

PROIBIDA REVENDA

Instituto Diana Dema  
Escola de Costurar  
Vestido Pala e Prega  
Costas para iniciante

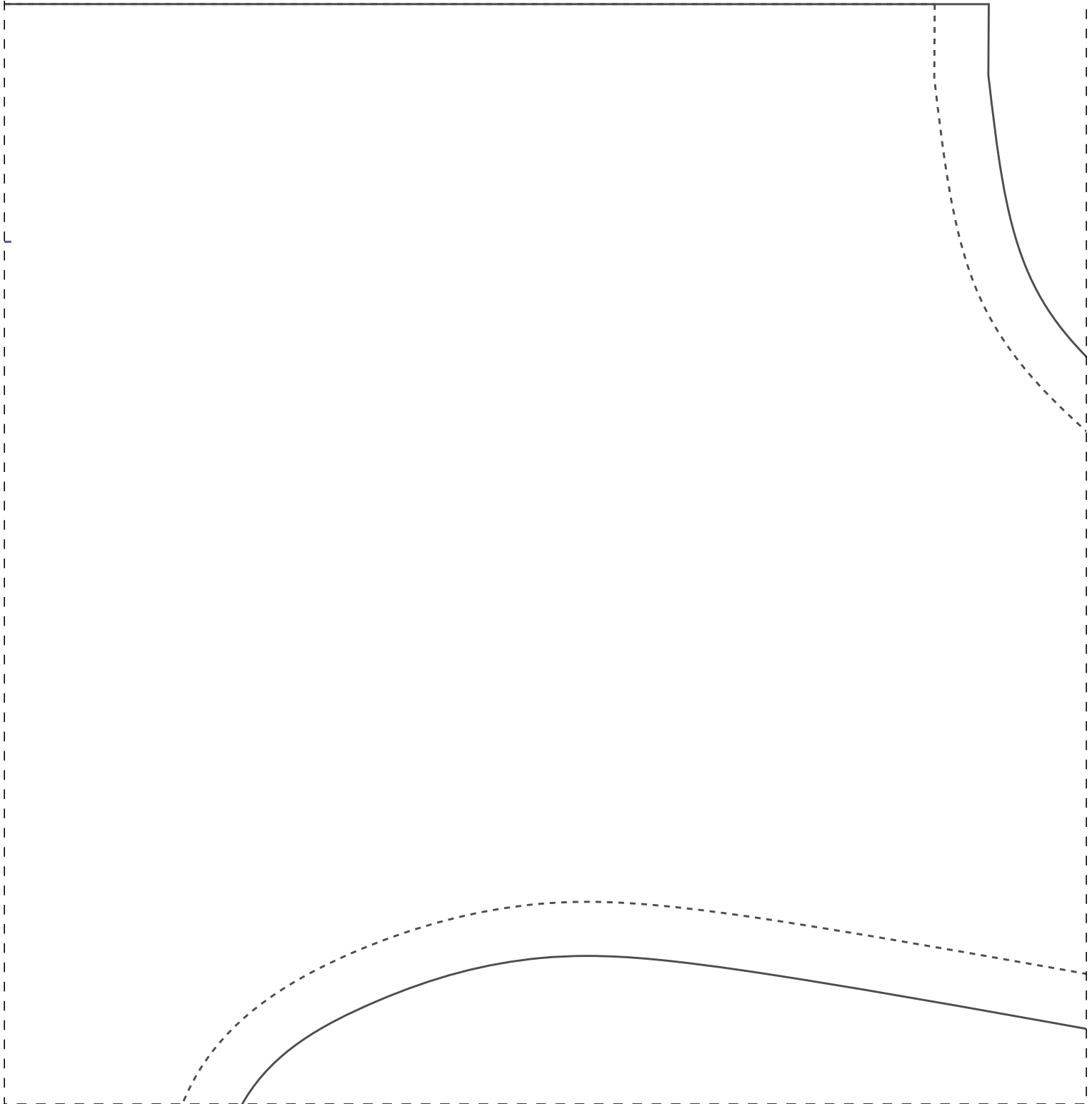


2-4

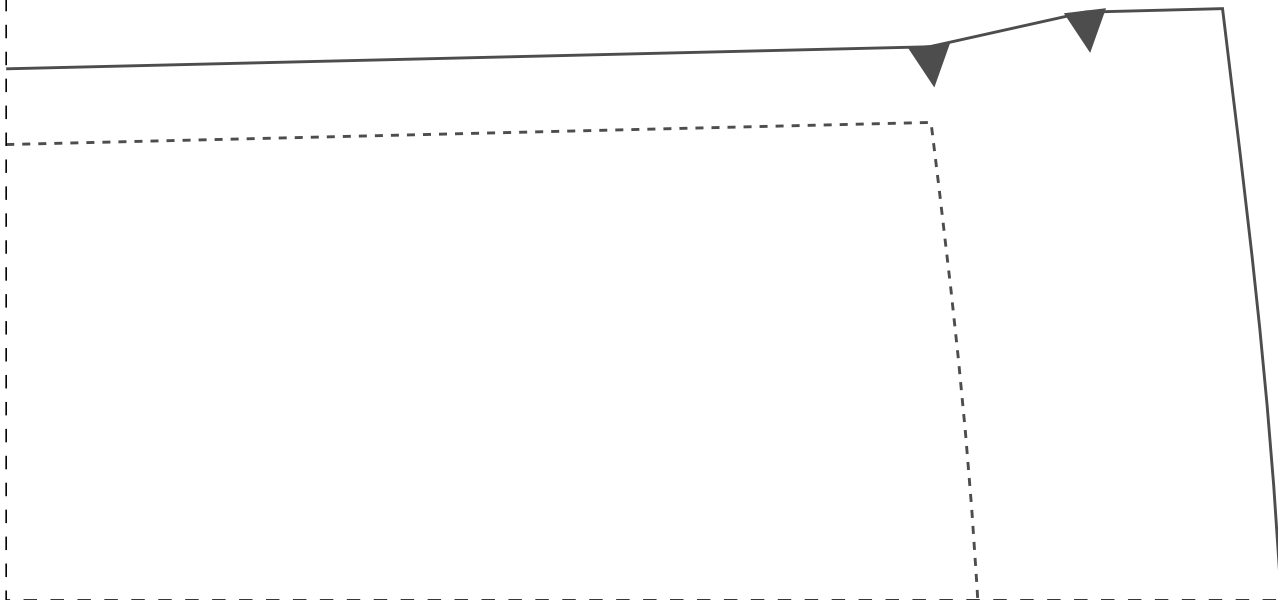
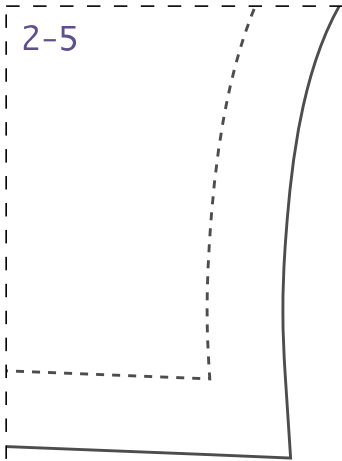




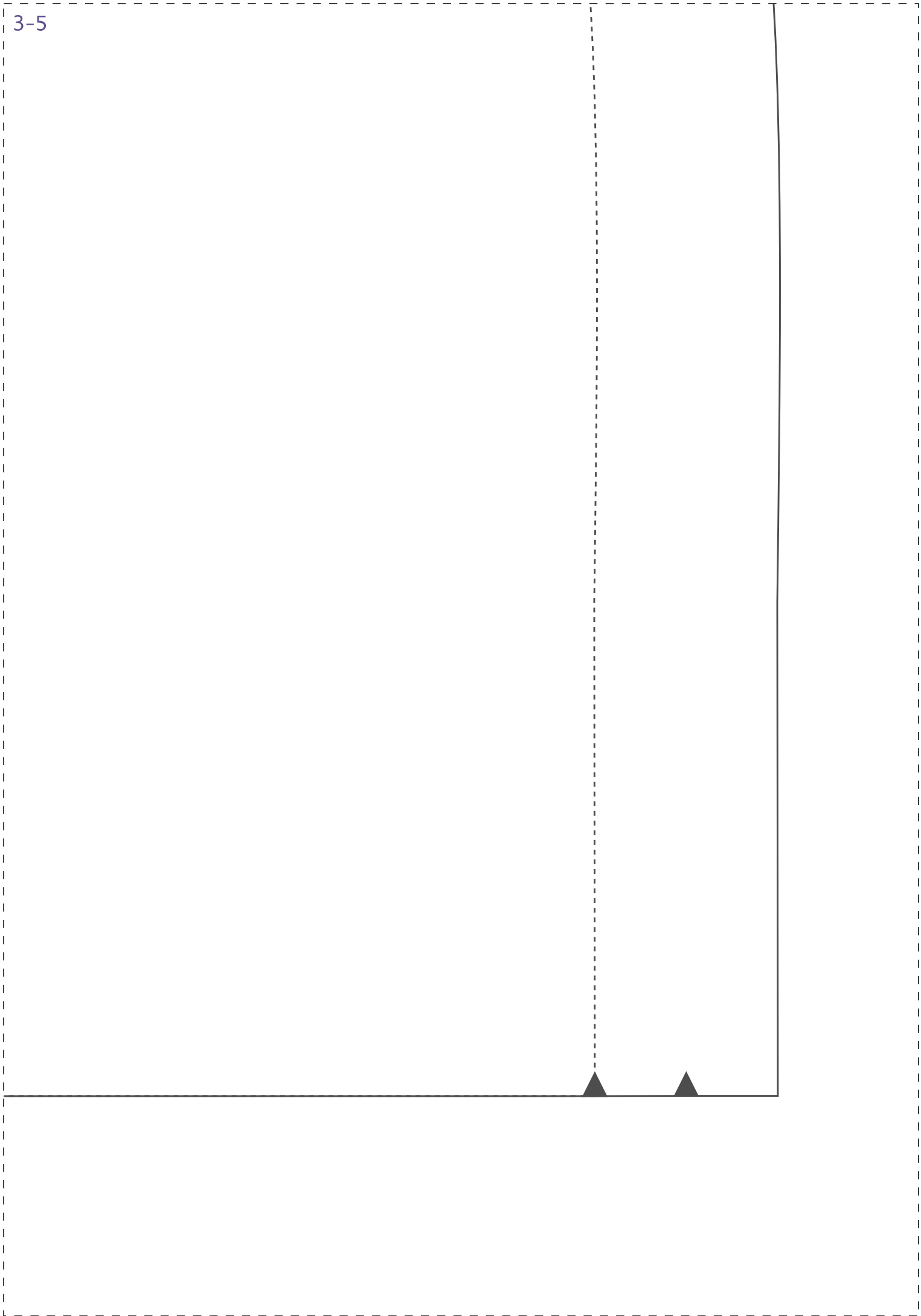
1-5



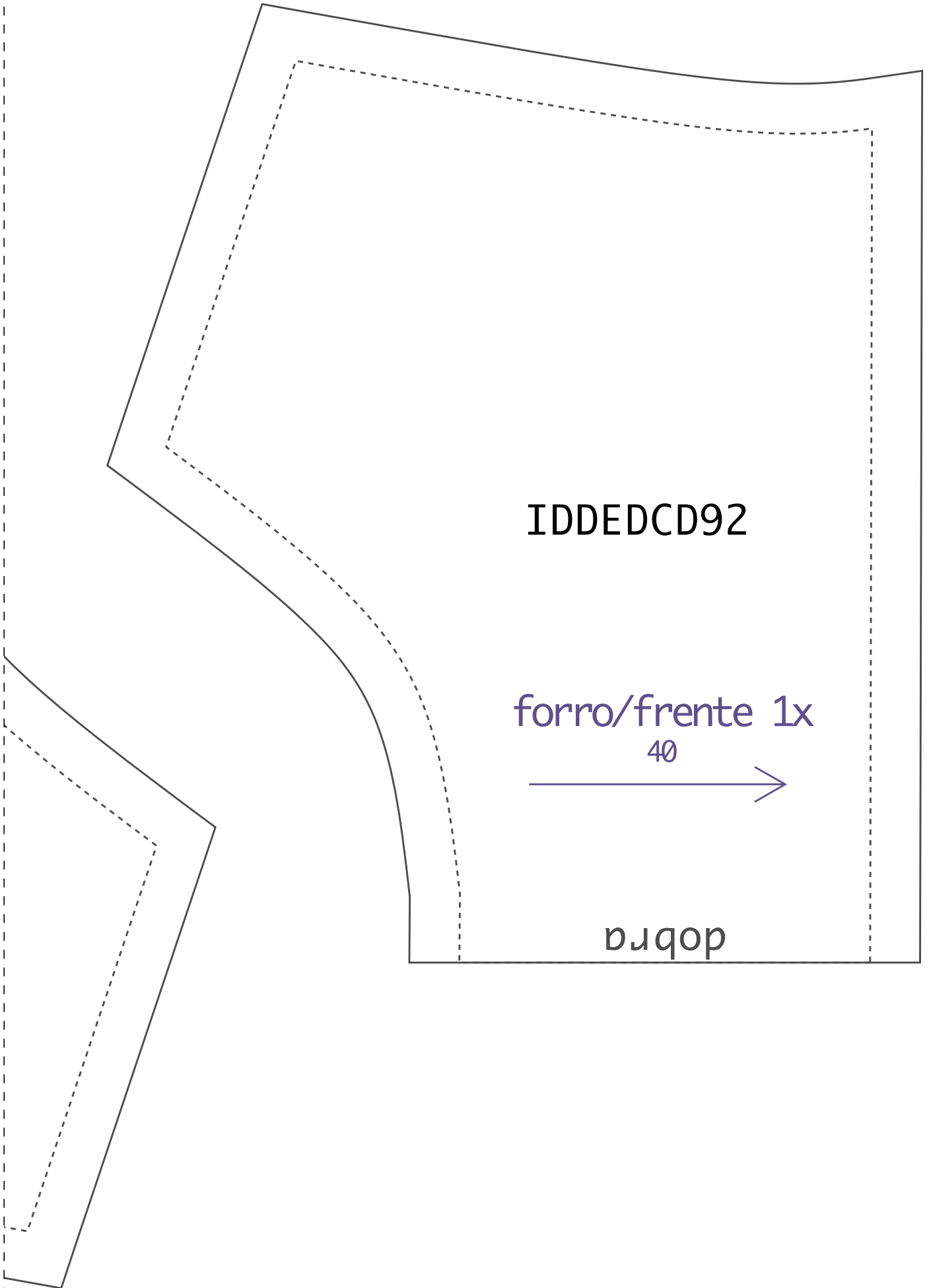
2-5



3-5



1-6



IDDED CD92

forro/frente 1x

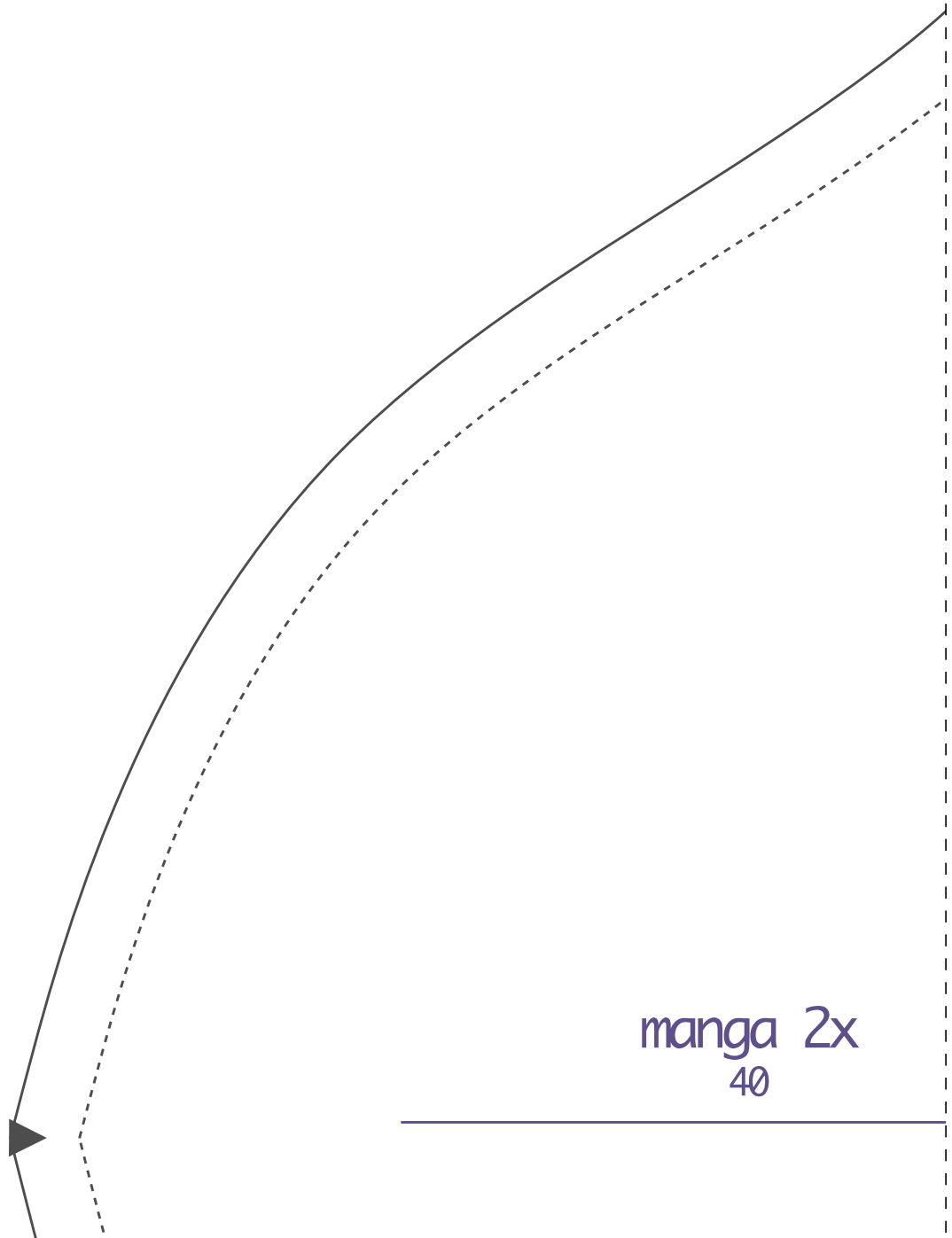
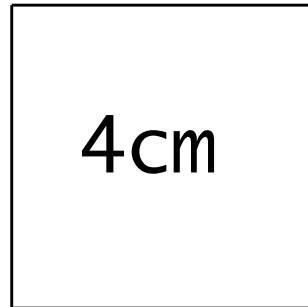
40



buro

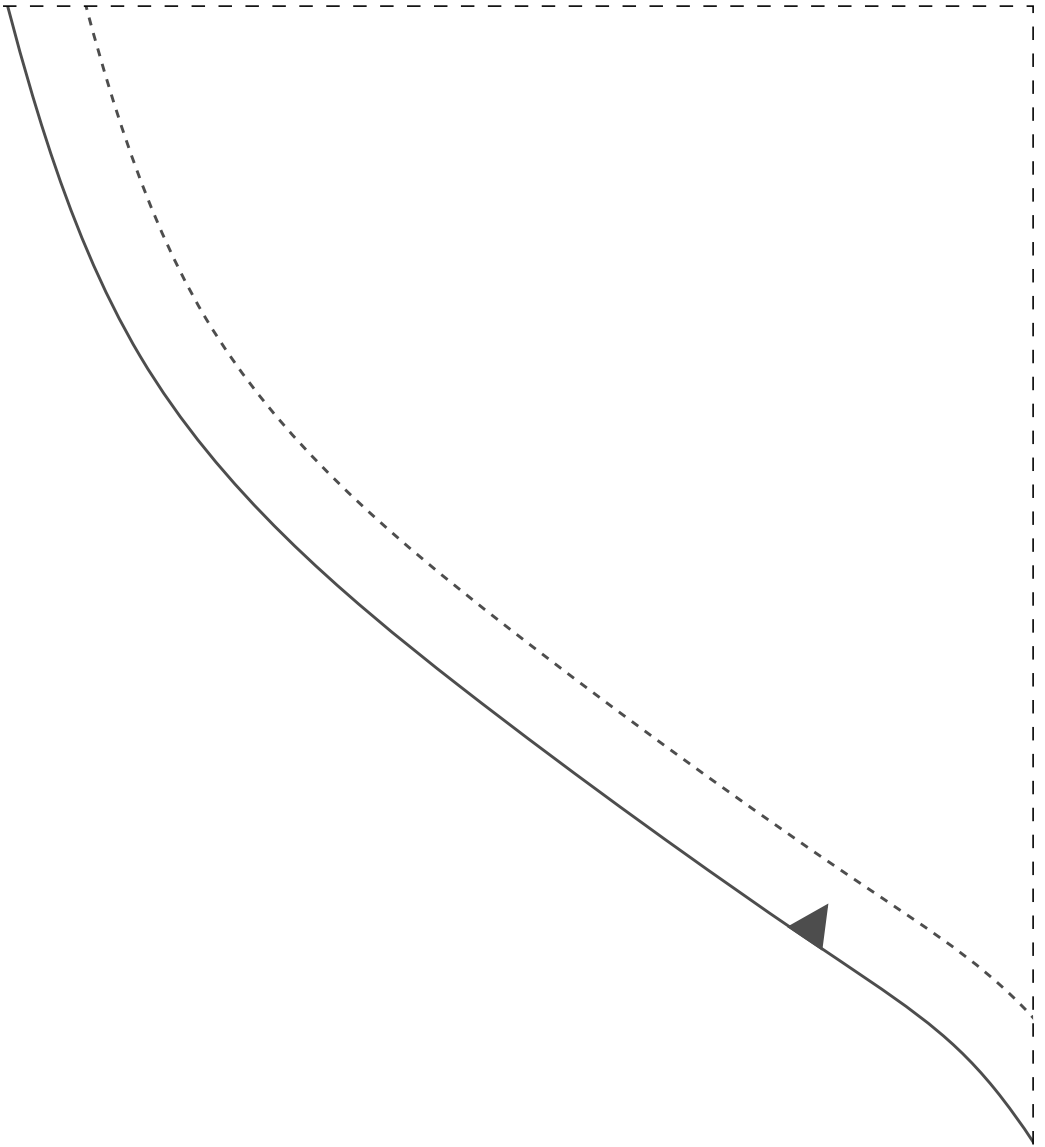


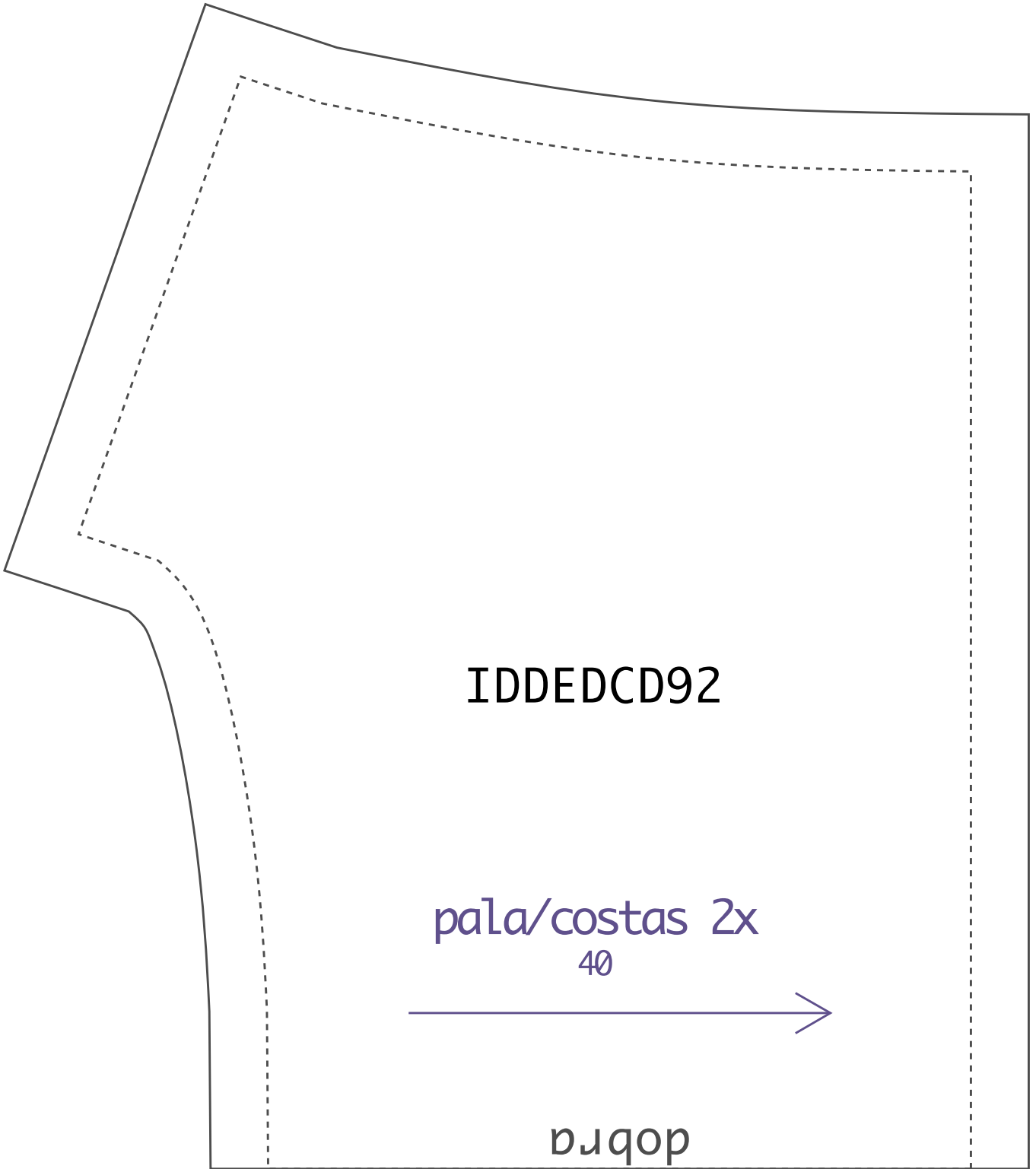
Teste de impressão: ao imprimir seu molde, meça o quadrado que deverá ter a mesma medida informada (4cm), assim você se certificará que ele foi impresso no tamanho correto.



manga 2x  
40

3-6





IDDED CD92

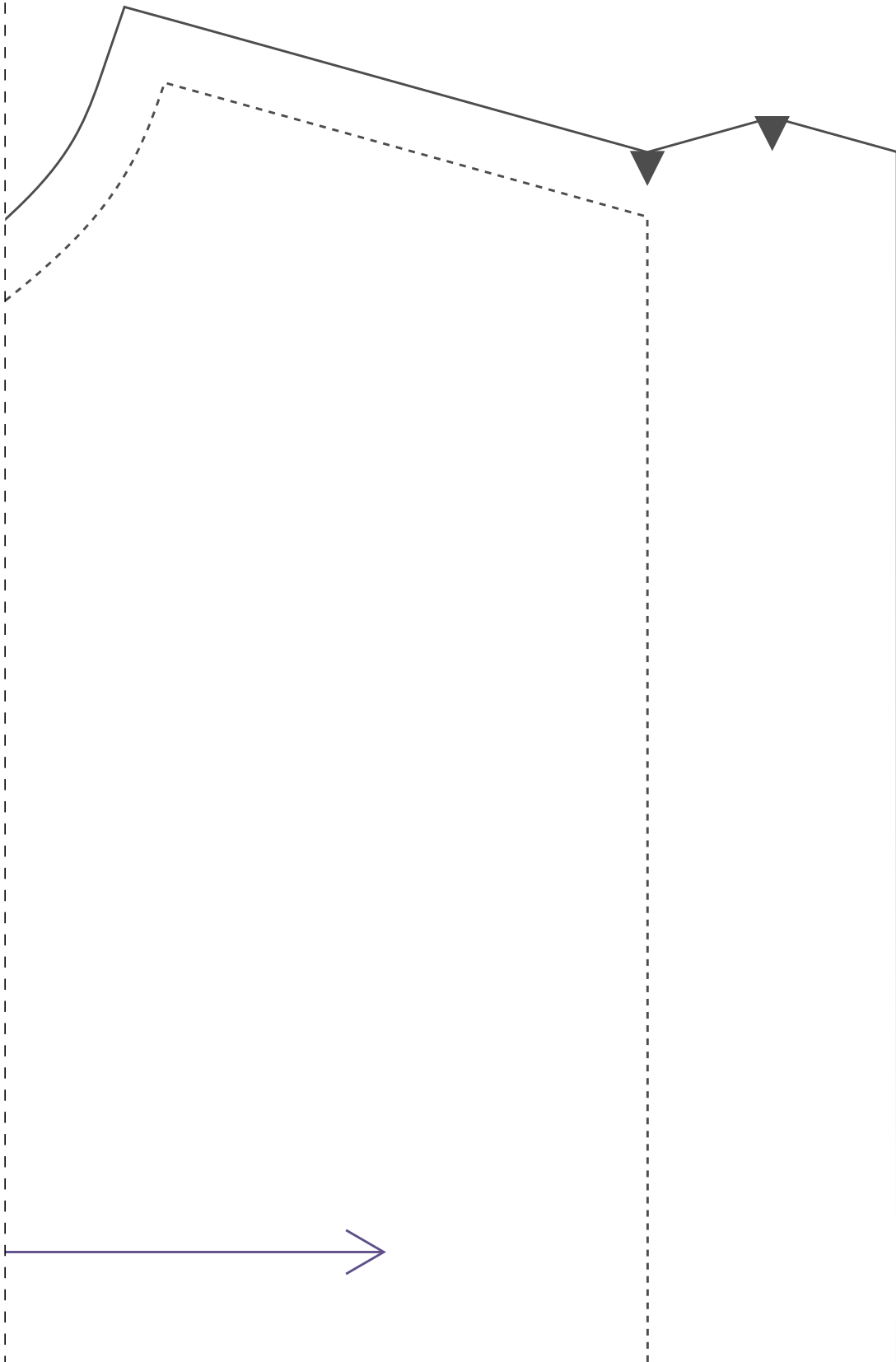
pala/costas 2x

40



dobra

2-7



IDDEDCD92

