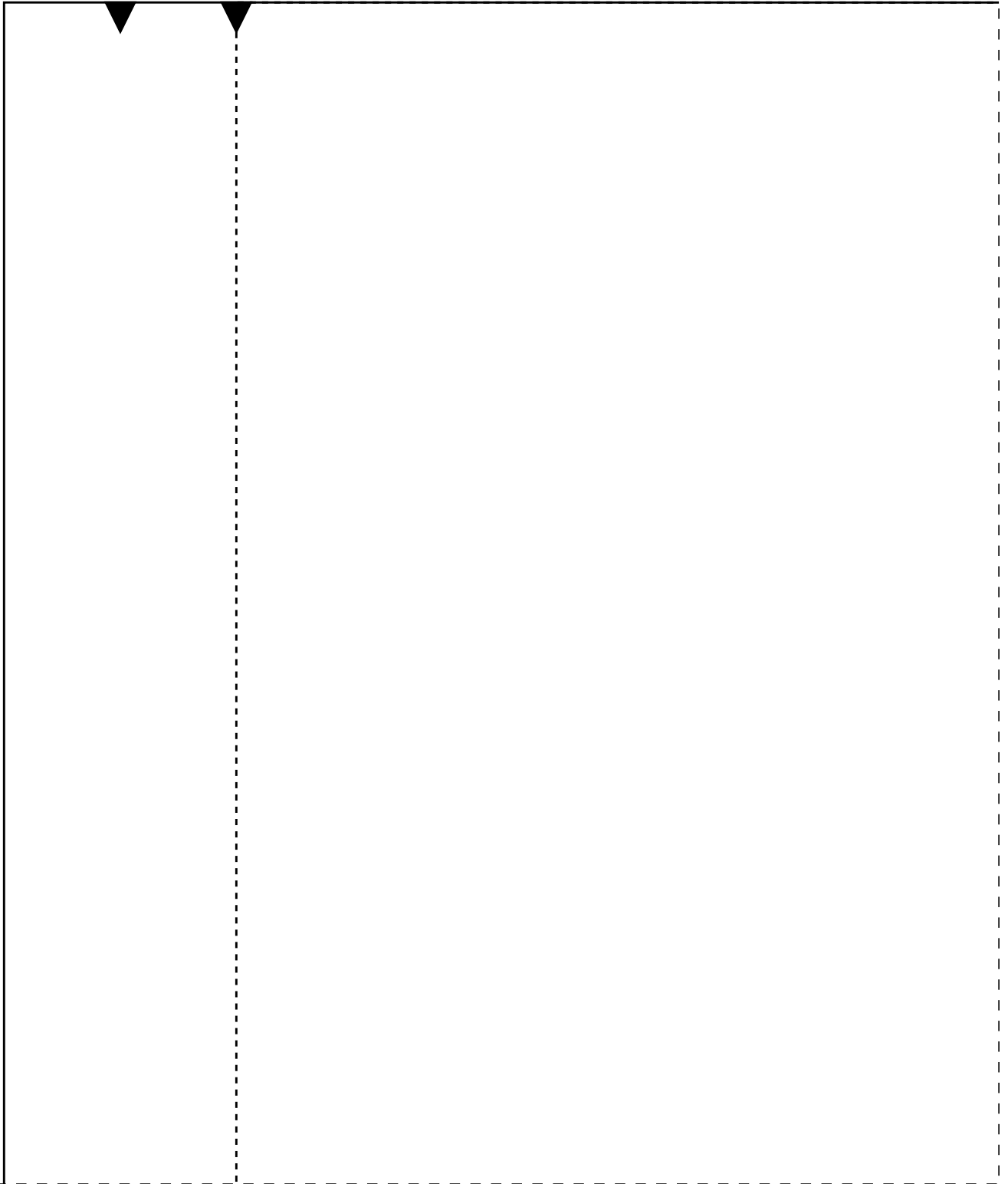
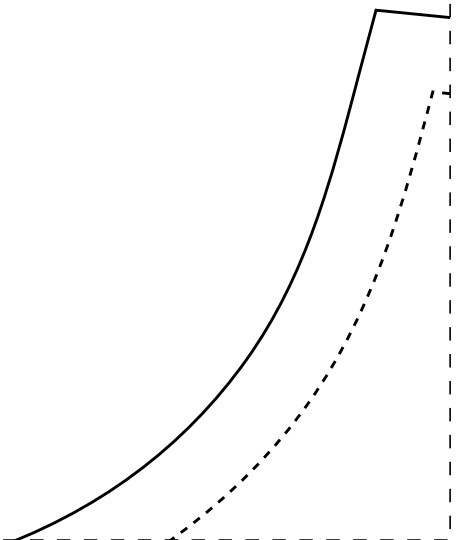
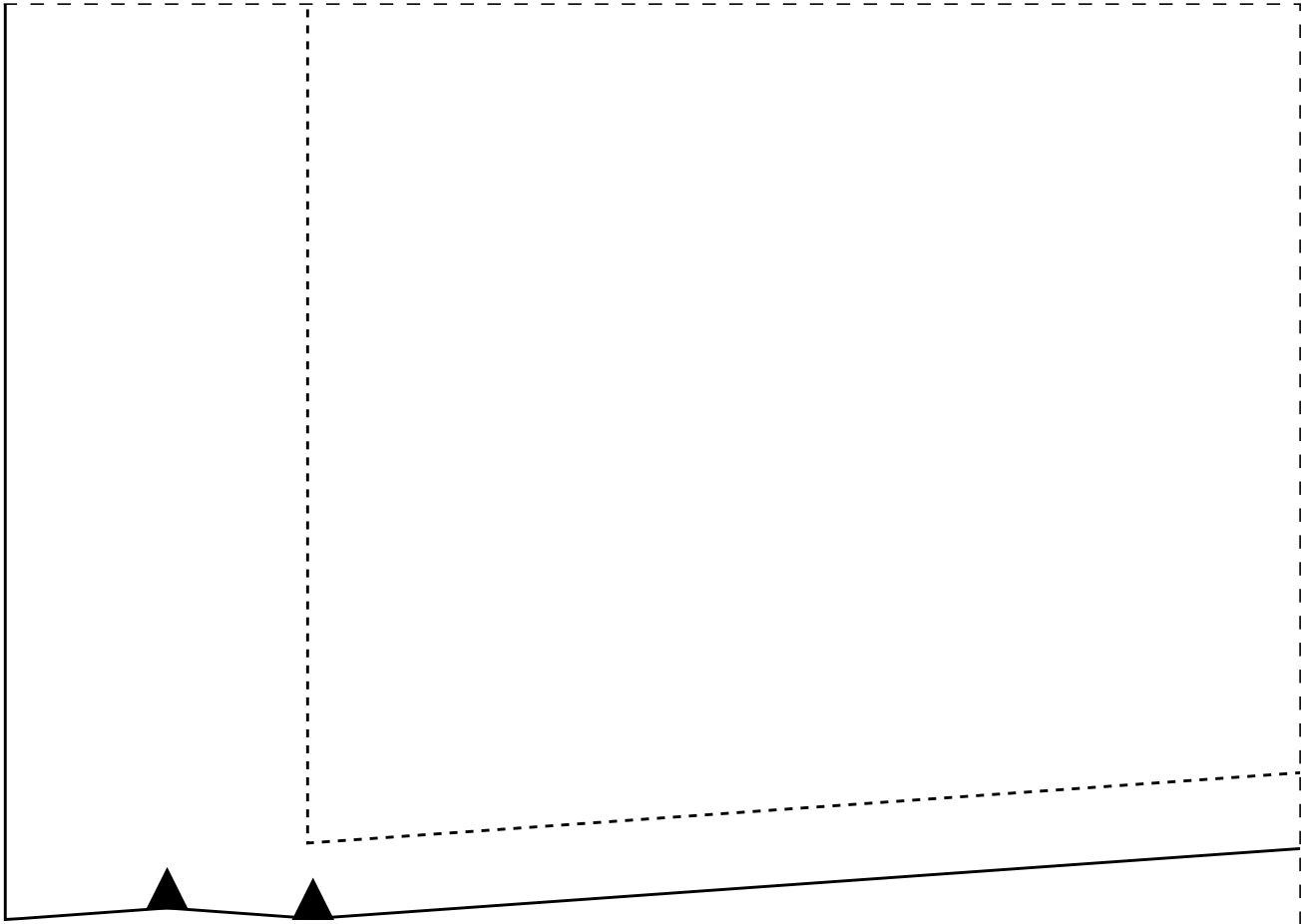


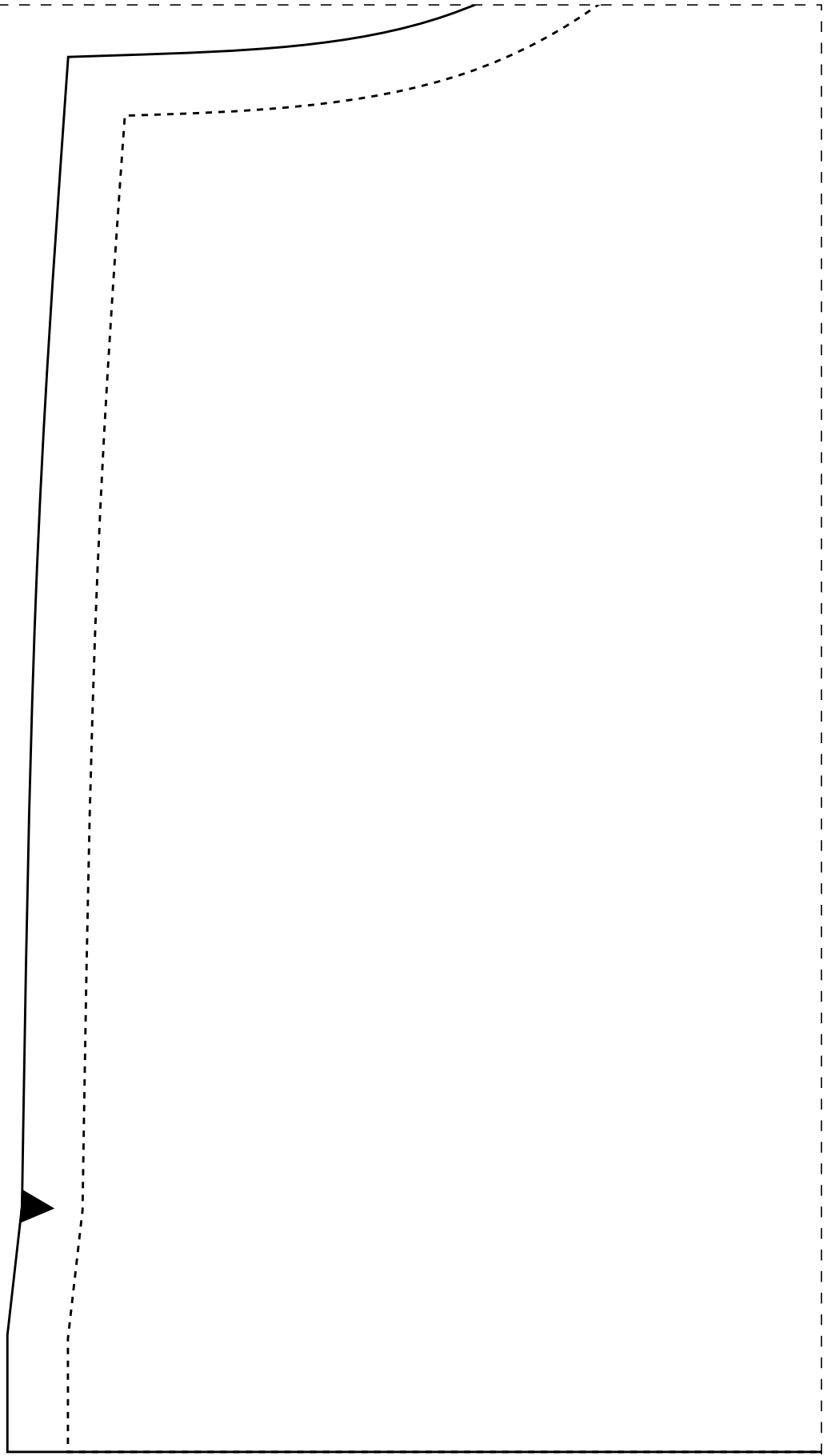
1-1



2-1

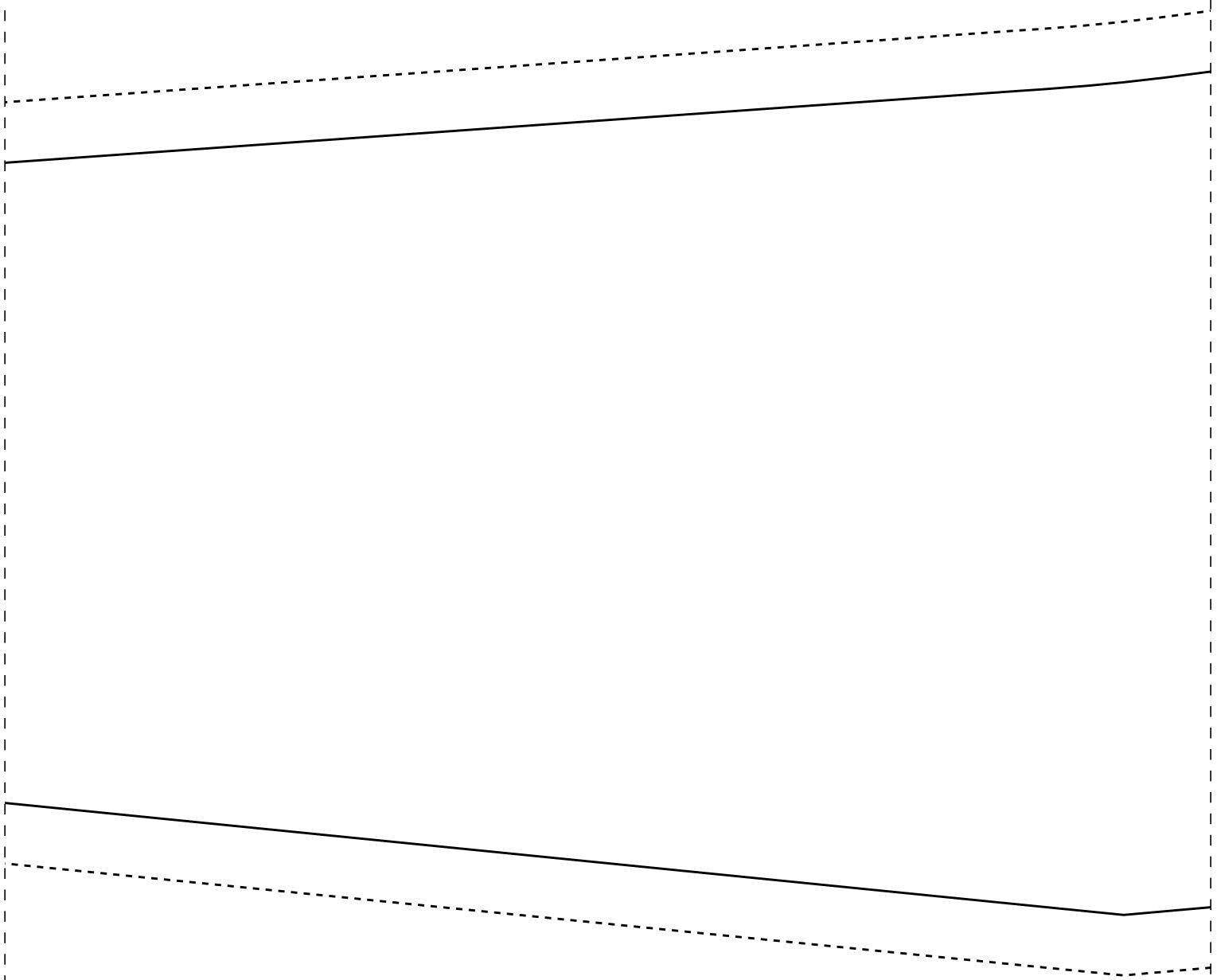


3-1



1-2





FICHA TÉCNICA:

- Tecido plano 1
- Viscose, visco
- tencel, tricolli
- Pala dupla
- 2m para os tam
- 3,2m para os t

IDDED92

---

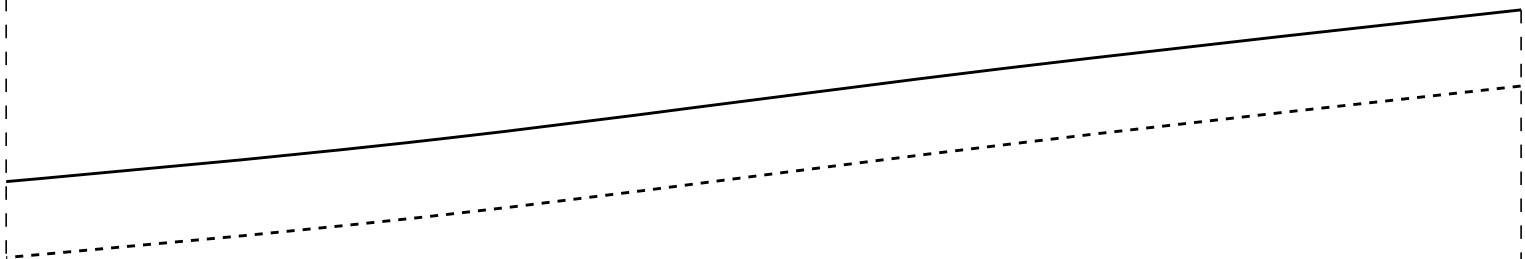
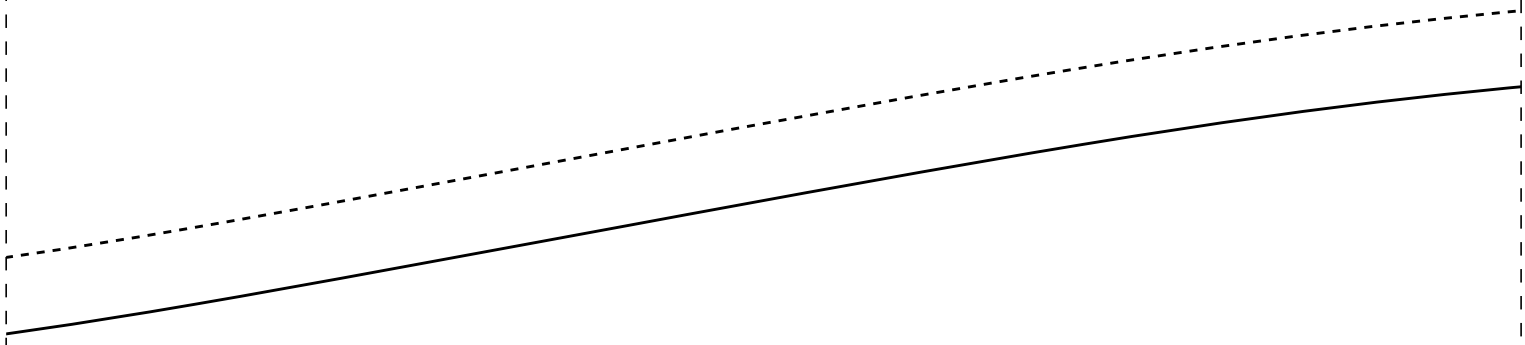
1-3

dobra

frente 1x  
42

es

rch!





,4m largura  
linho, linho,  
ne ou similares

anhos 36 ao 44  
pmanhos 46 A0 54

costas 1x  
42

dobra

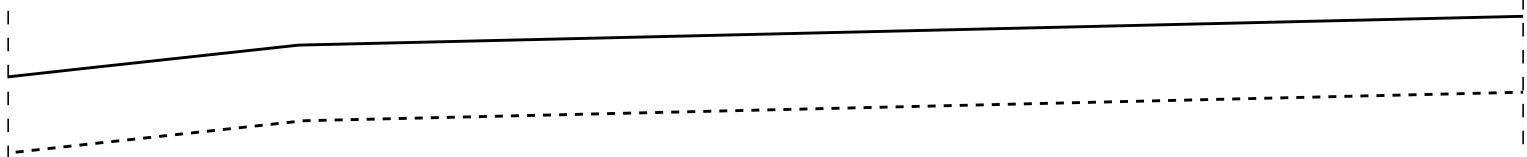
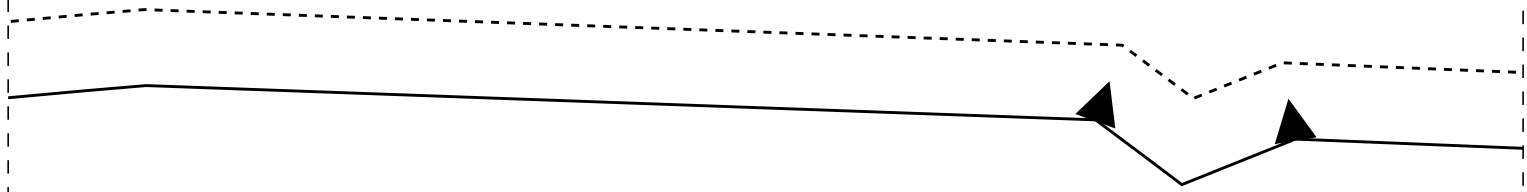
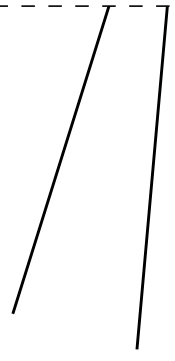
IDDEDCCD92

PROIBIDA REVENDA

Instituto Diana Dema  
Escola de Costurar  
Vestido Pala e Prega  
Costas para iniciante

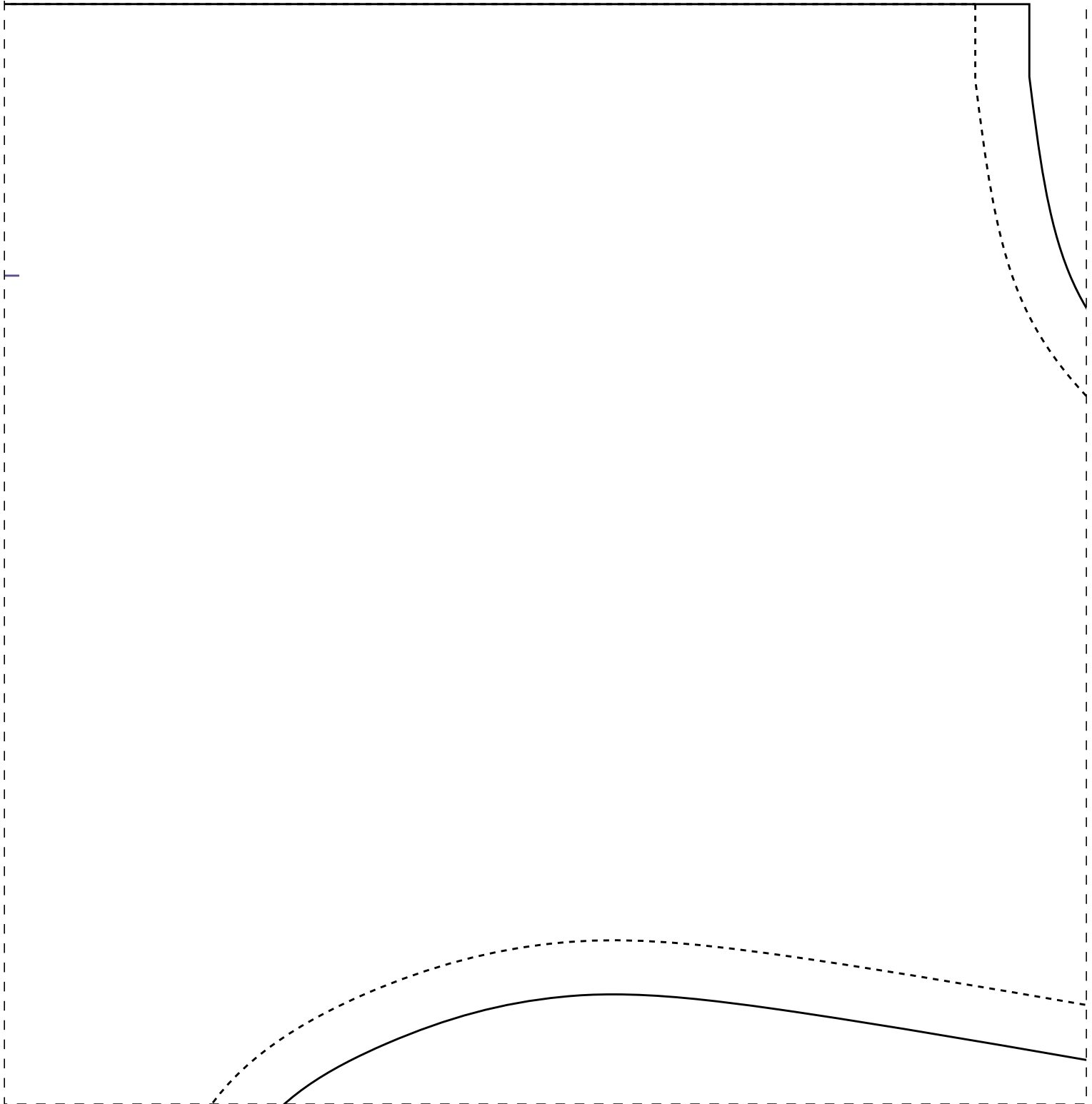


2-4

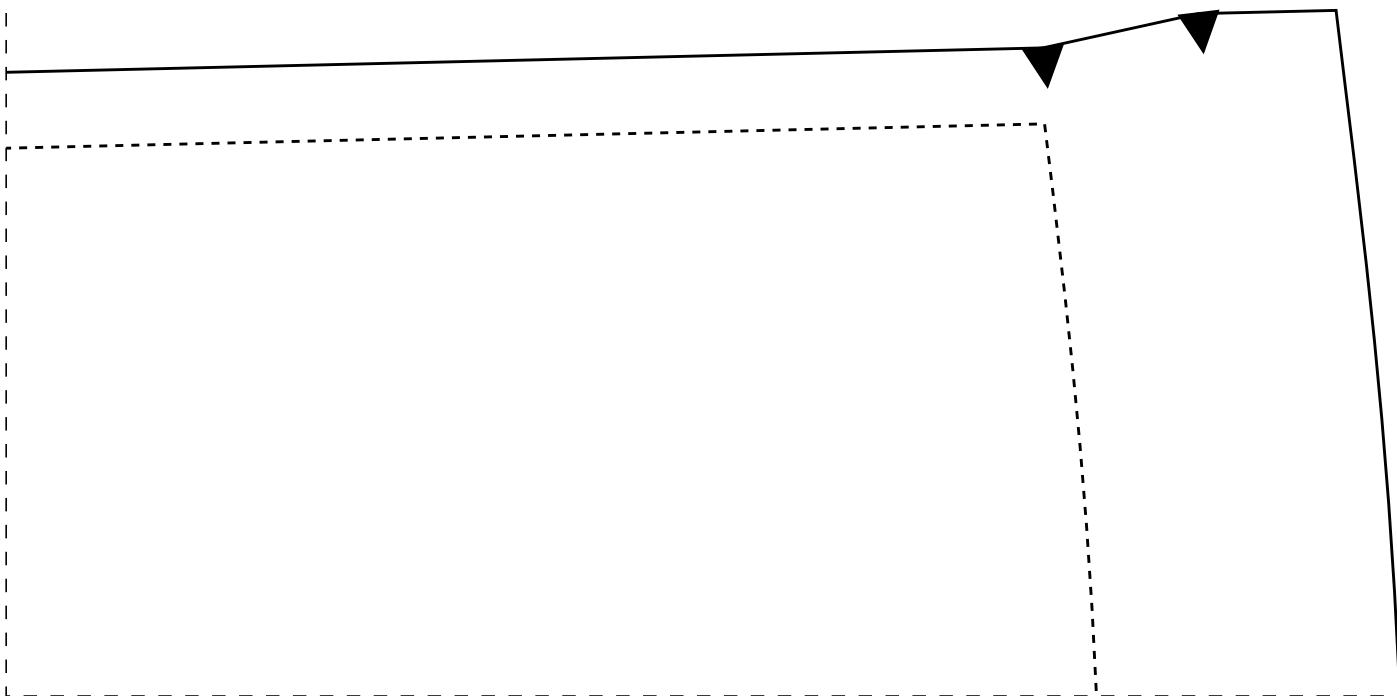
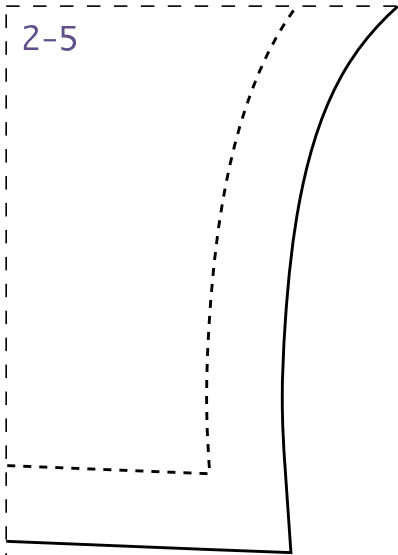


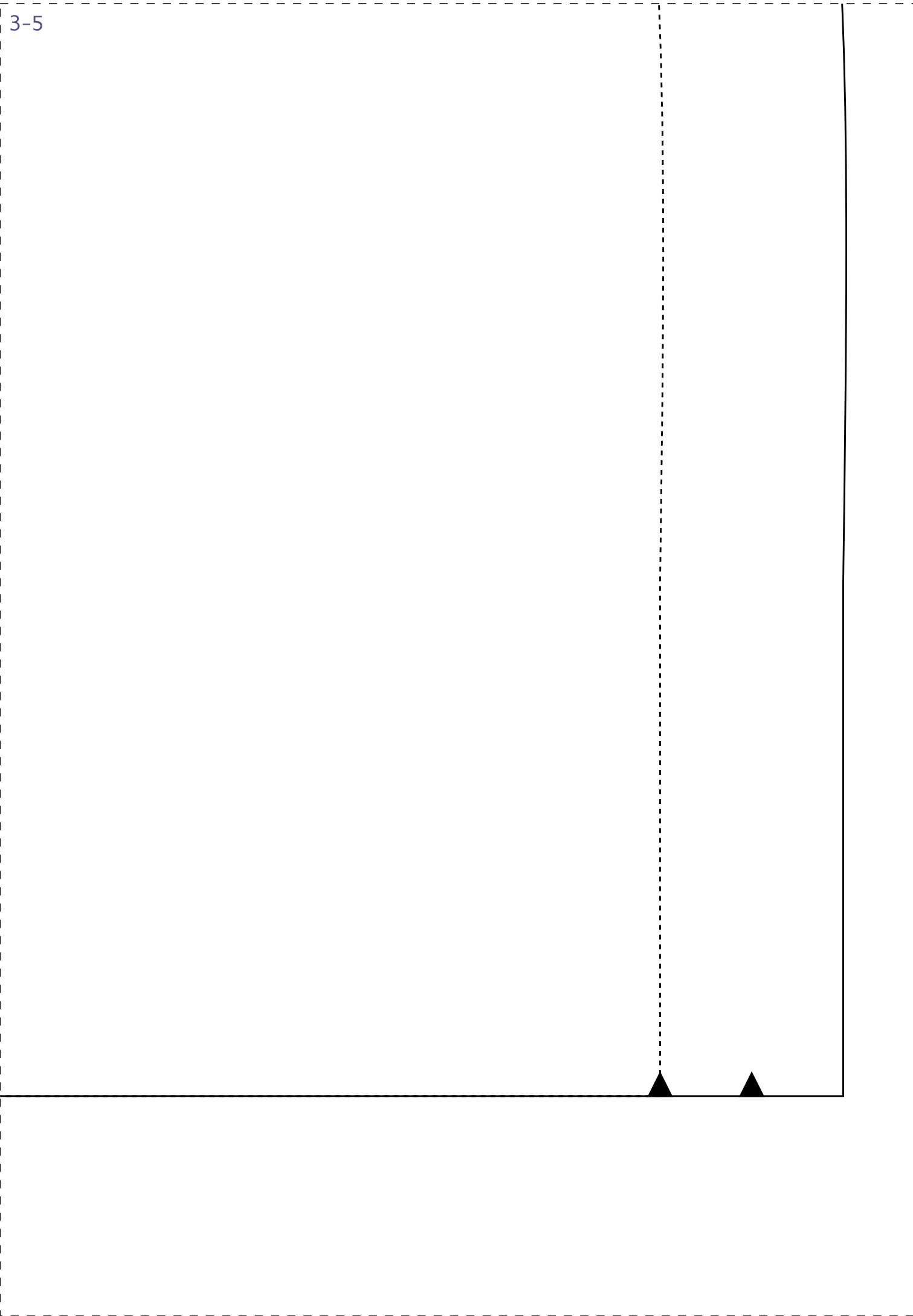


1-5

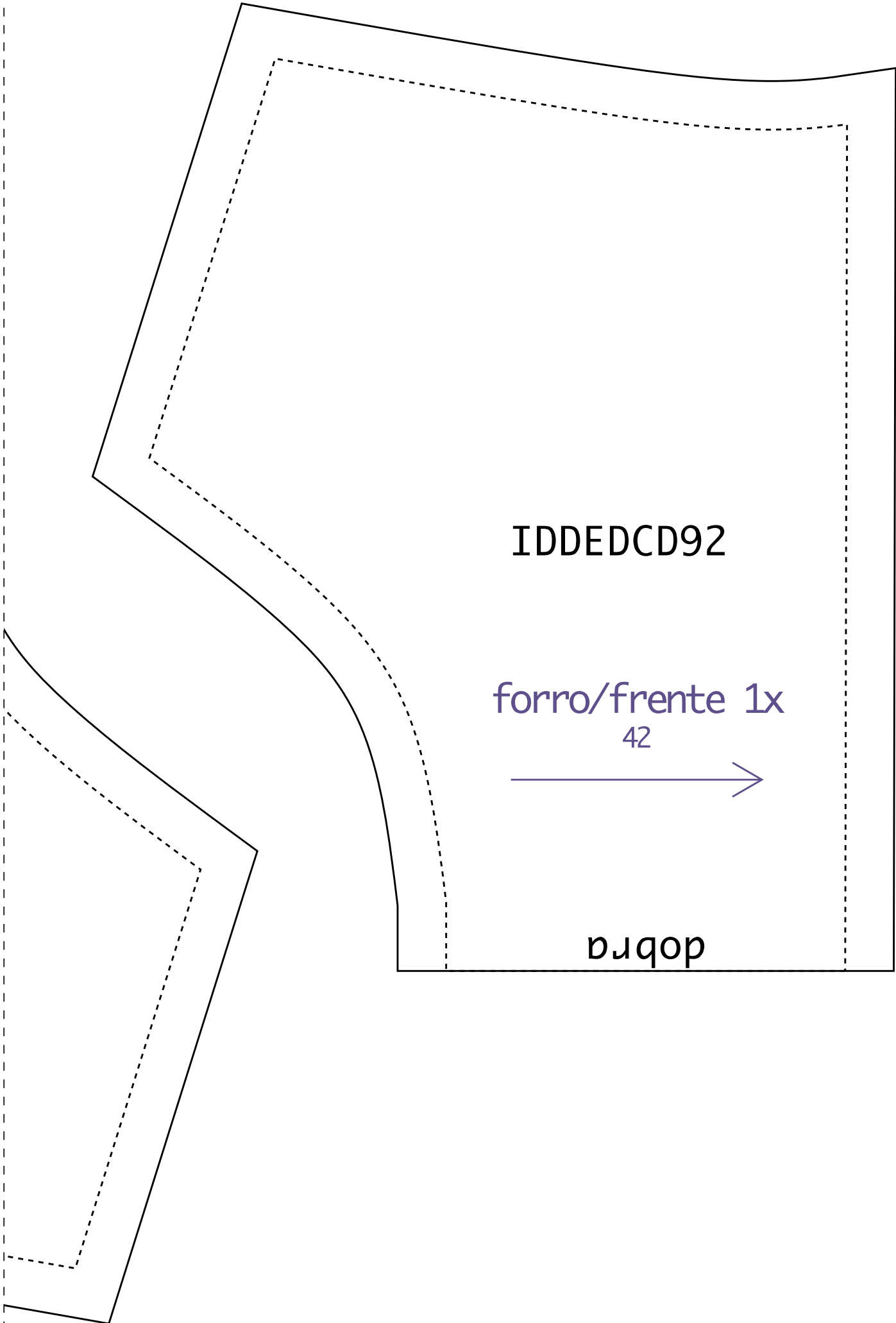


2-5





1-6



IDDED CD92

forro/frente 1x

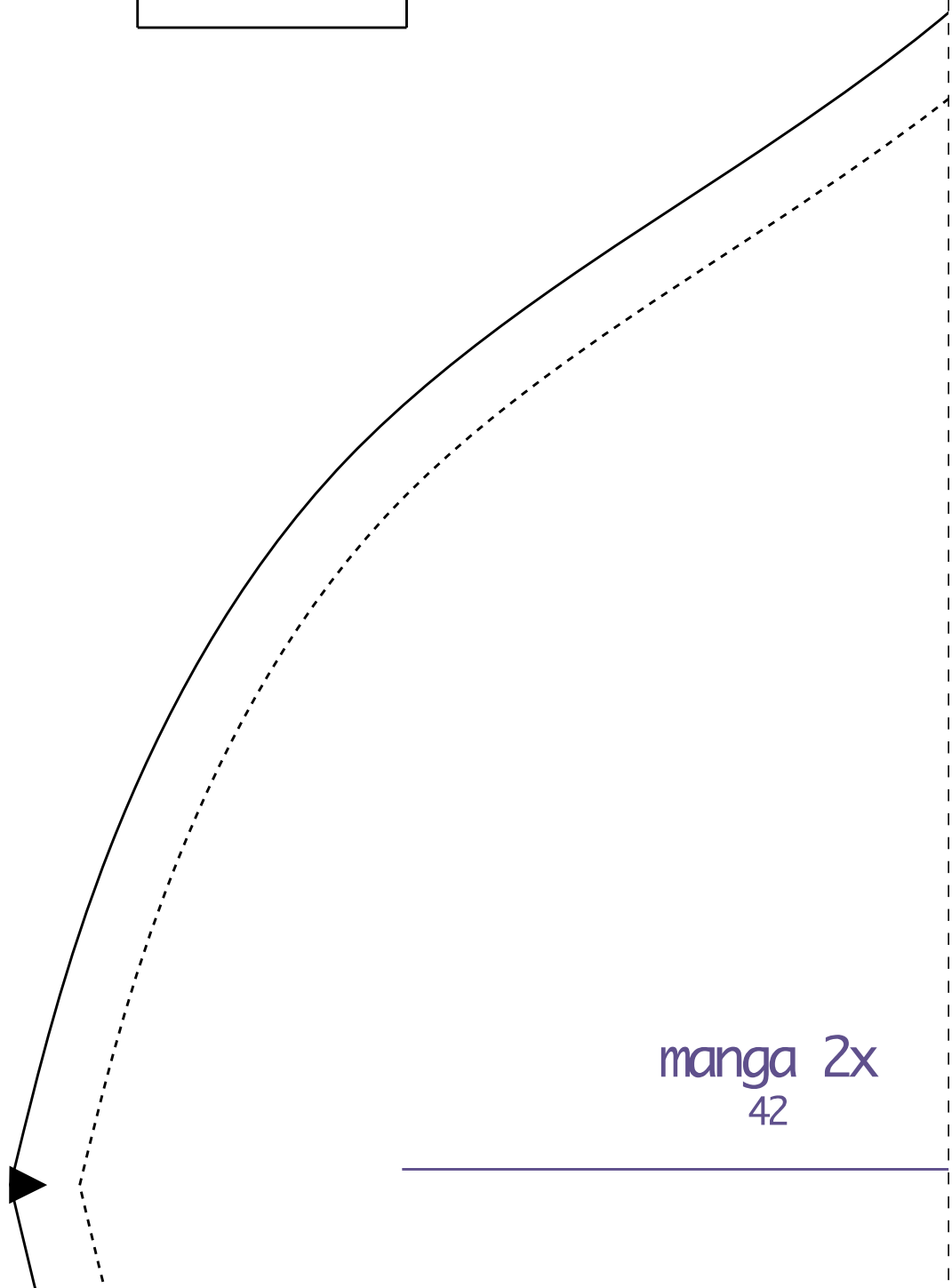
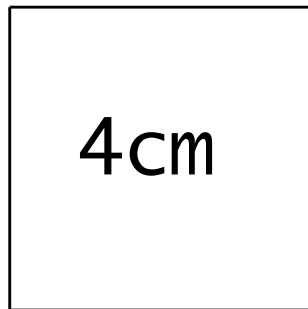
42



borso

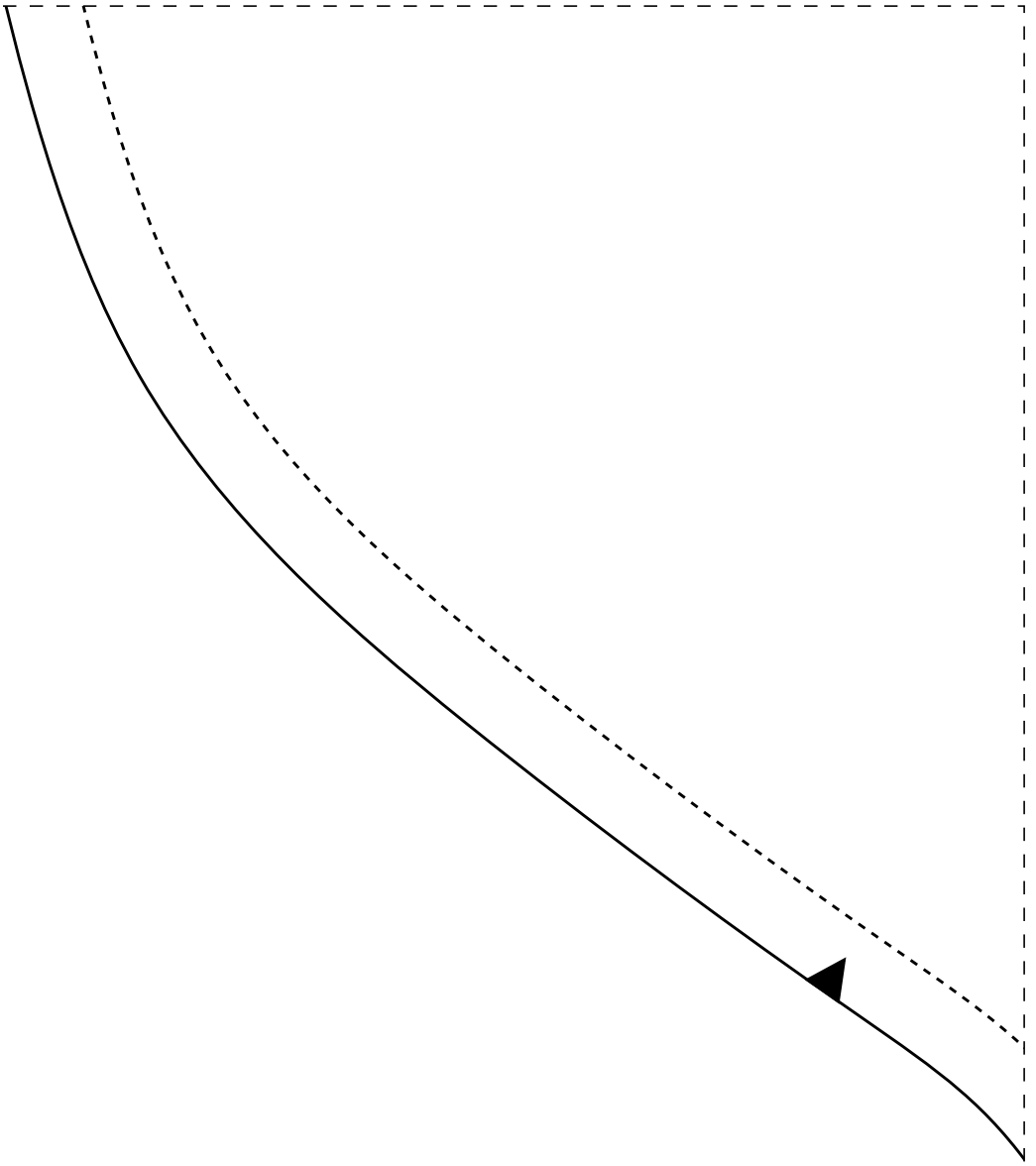


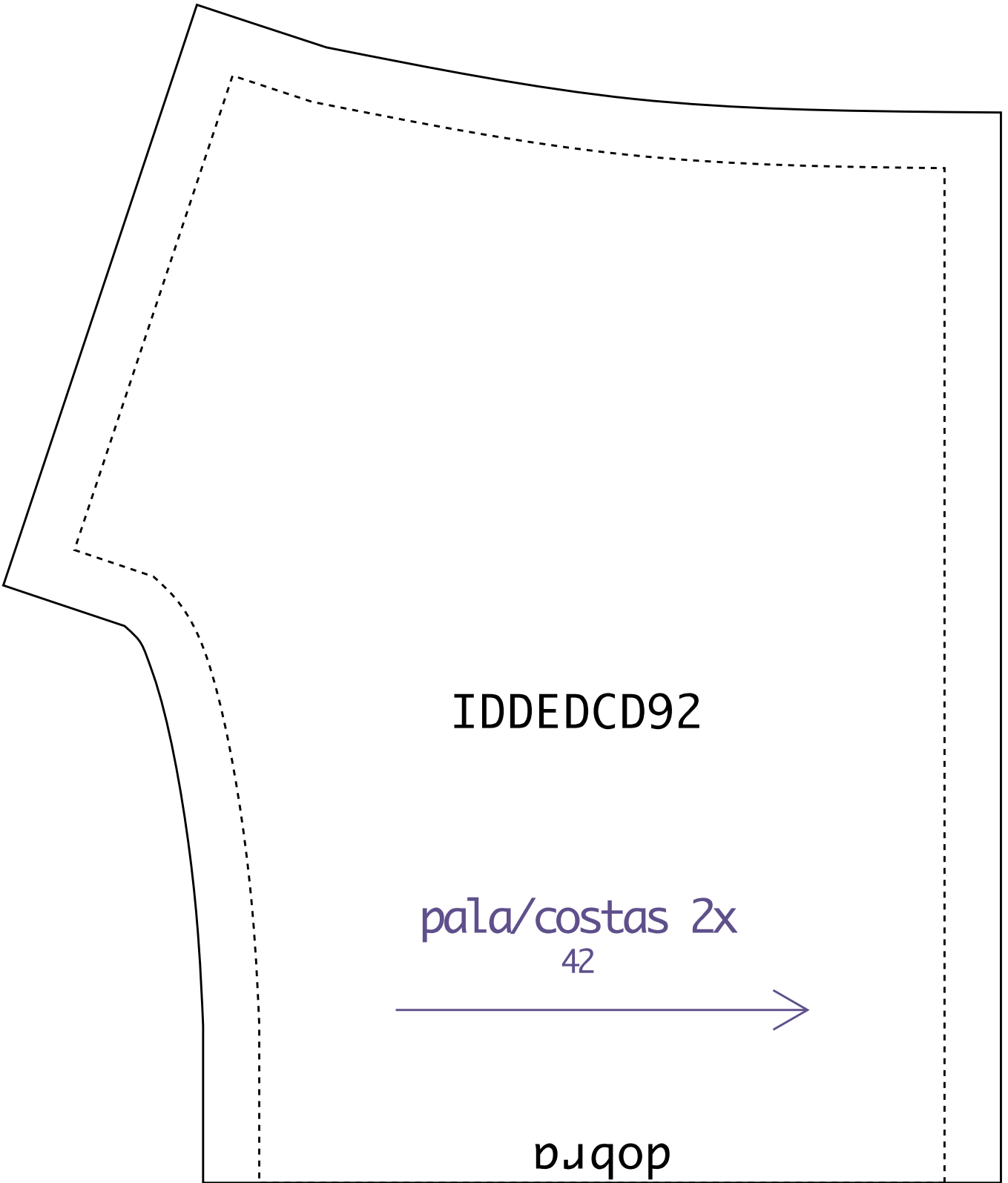
Teste de impressão: ao imprimir seu molde, meça o quadrado que deverá ter a mesma medida informada (4cm), assim você se certificará que ele foi impresso no tamanho correto.



manga 2x  
42

3-6





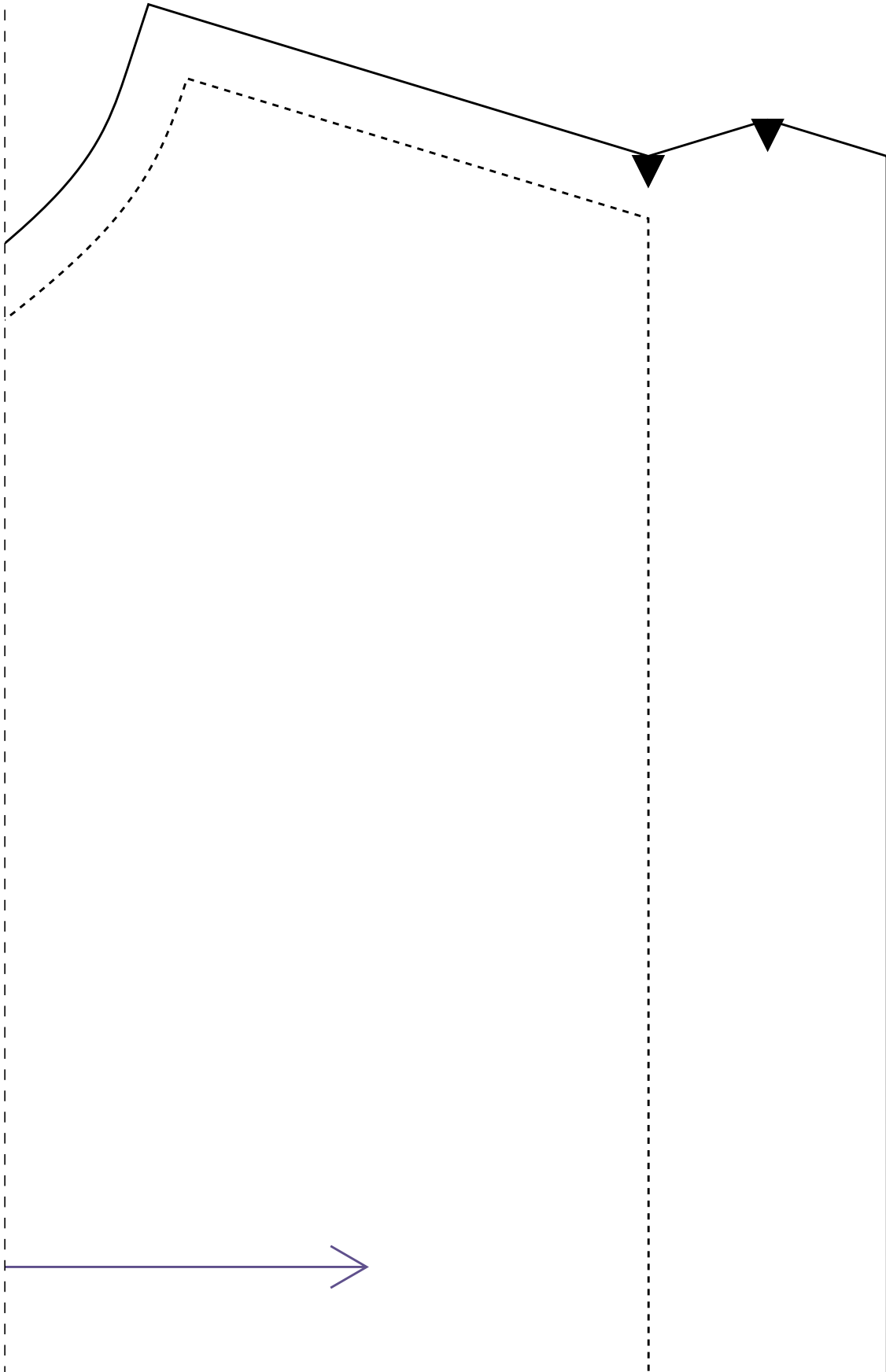
IDDED CD92

pa la / costas 2x  
42



dobra

2-7



IDDEDCD92

