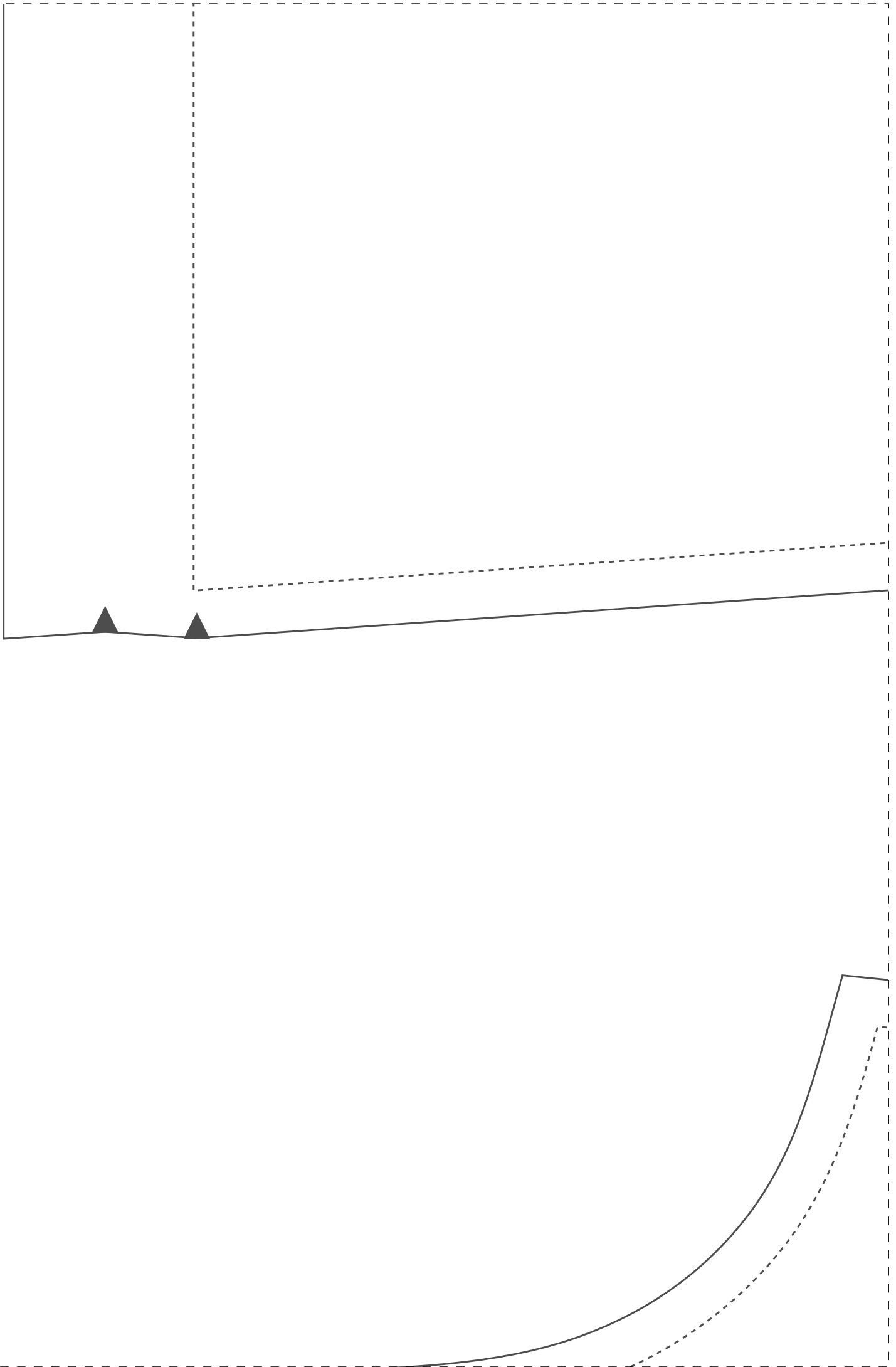


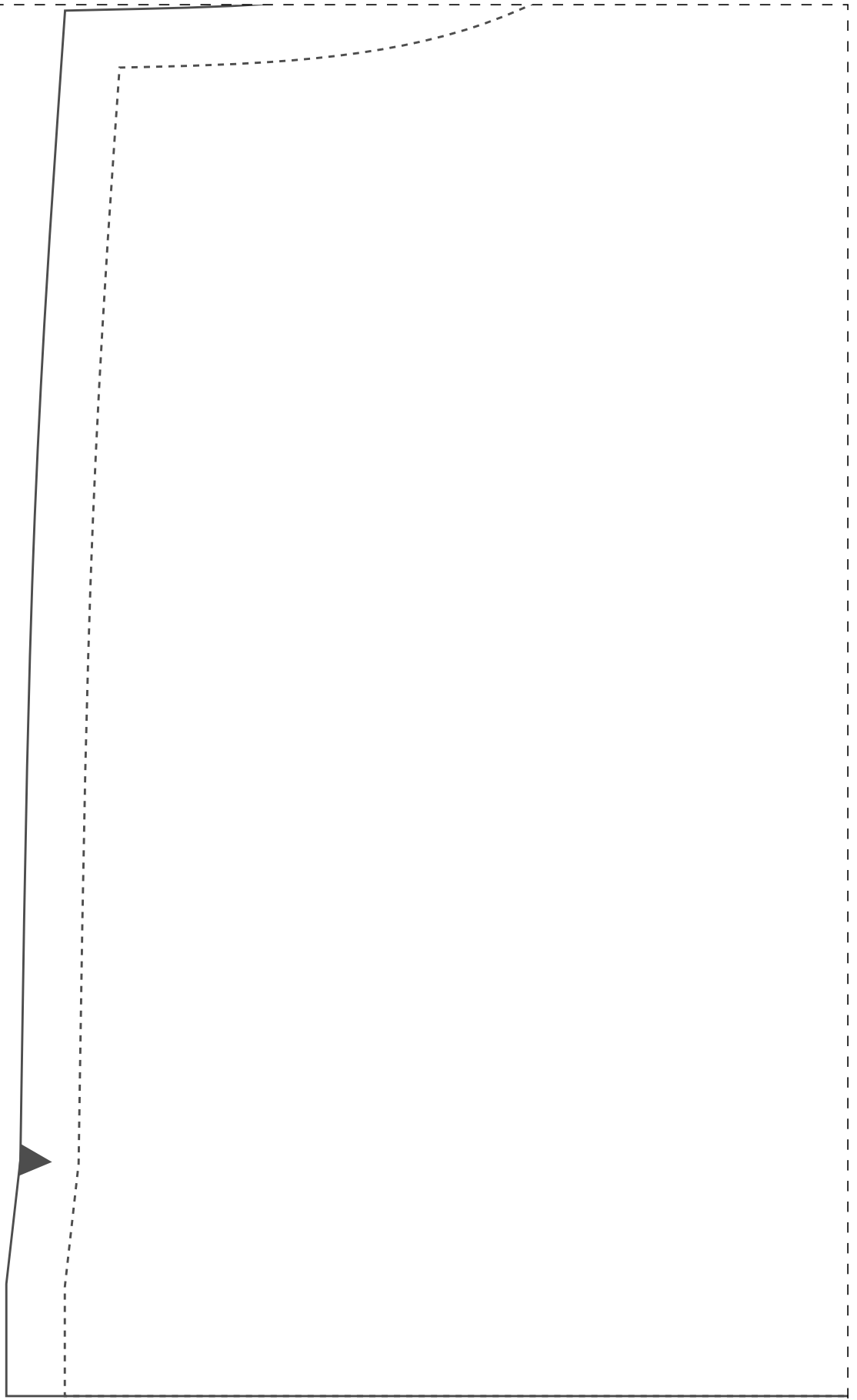
1-1



2-1

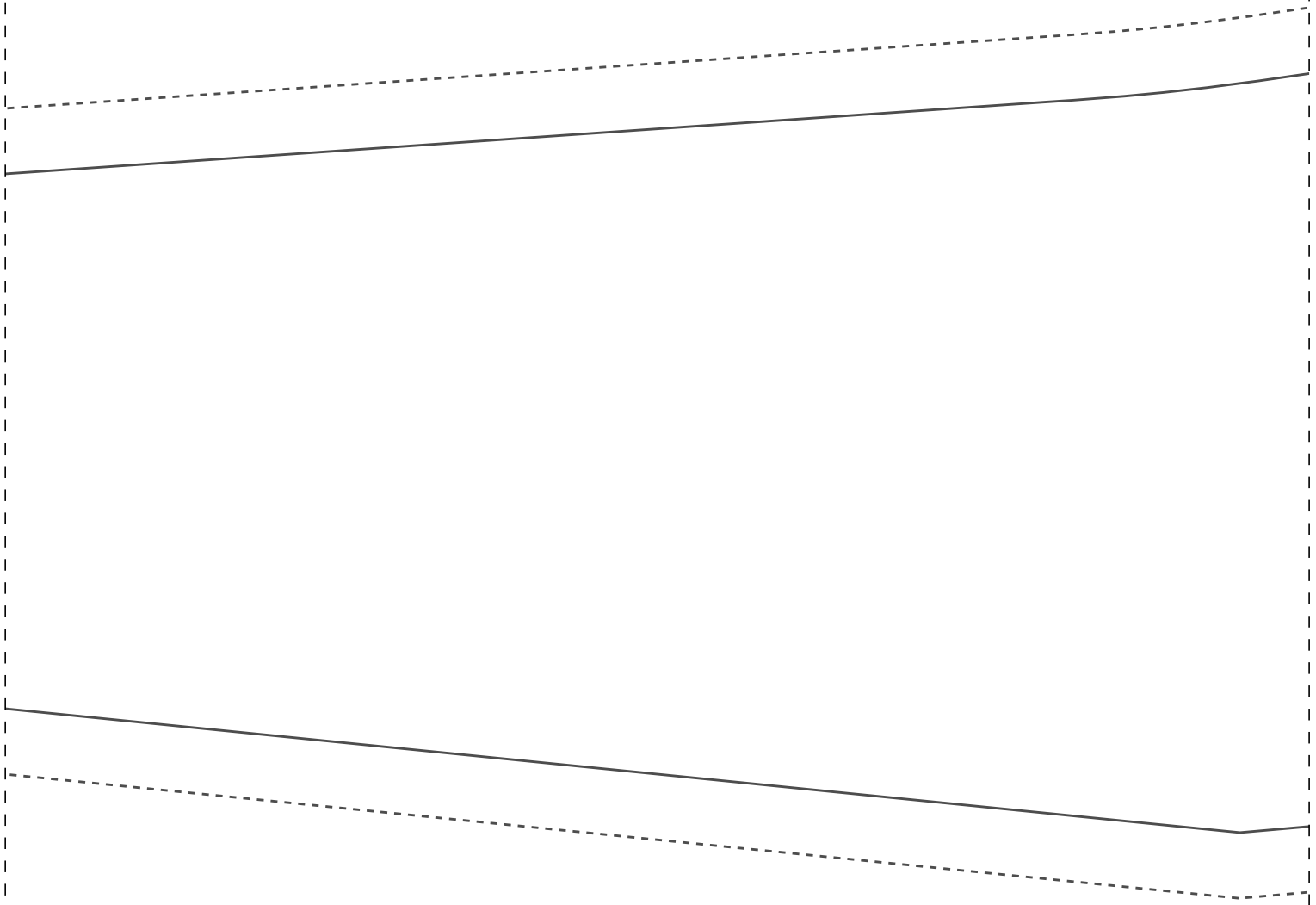


3-1



1-2





FICHA TÉCNICA:

- Tecido plano 1
- Viscose, visco
- tencel, tricolli
- Pala dupla
- 2m para os tam
- 3,2m para os t

IDDED92

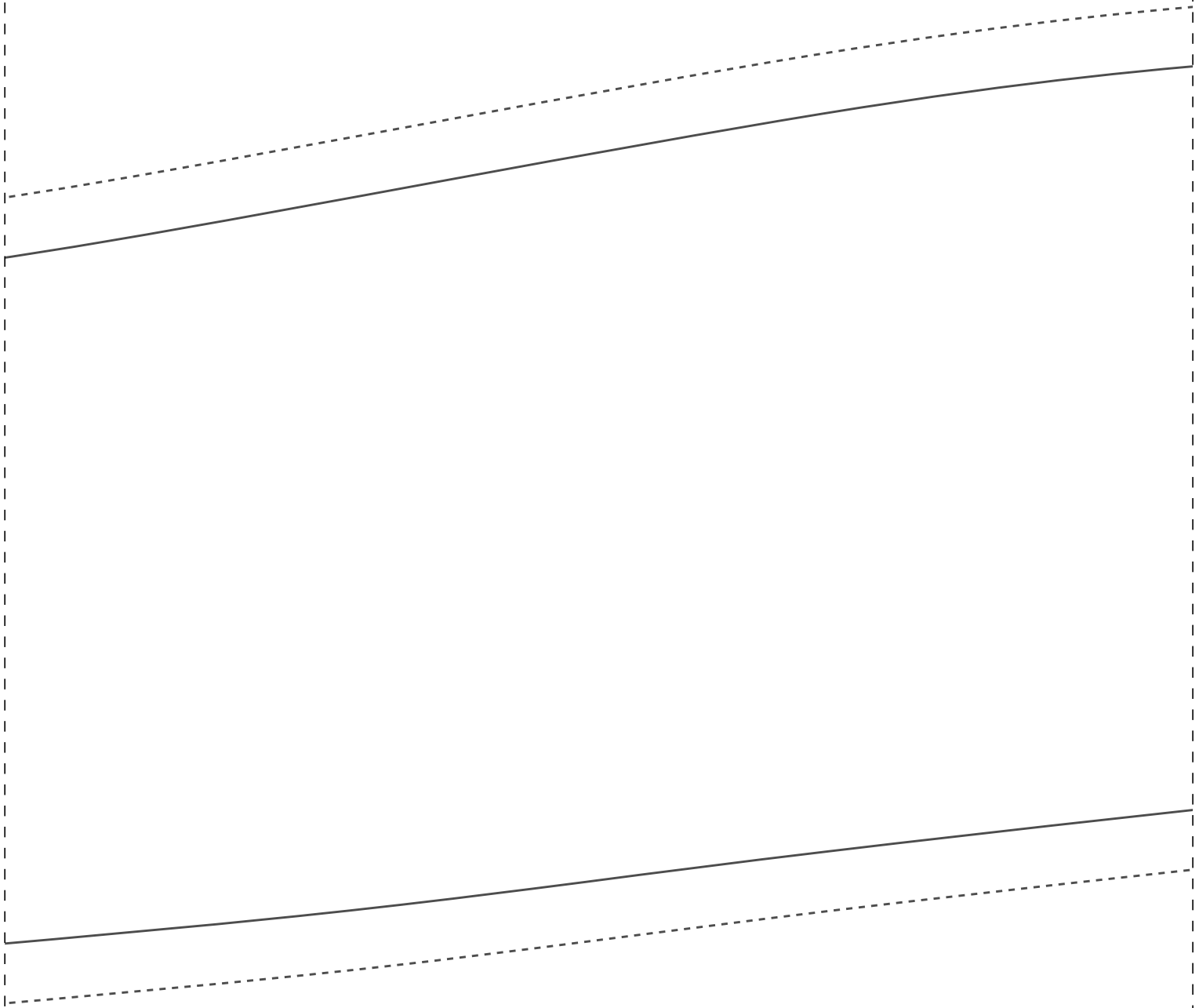
1-3

dobra

frente 1x
44

es

rch!



,4m largura
linho, linho,
ne ou similares

anhos 36 ao 44
manhos 46 A0 54

costas 1x
44

dobra

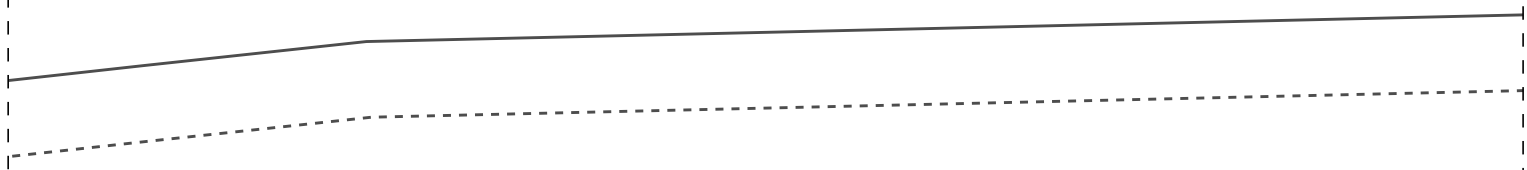
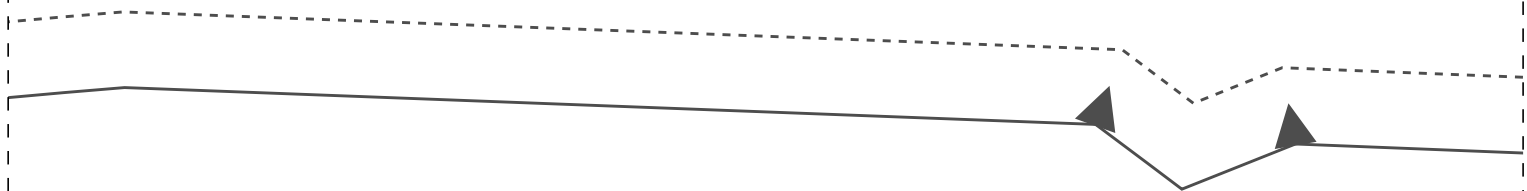
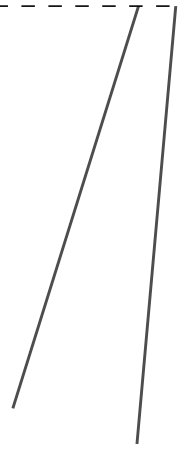
IDDEDCCD92

PROIBIDA REVENDA

Instituto Diana Dema
Escola de Costurar
Vestido Pala e Prega
Costas para iniciante

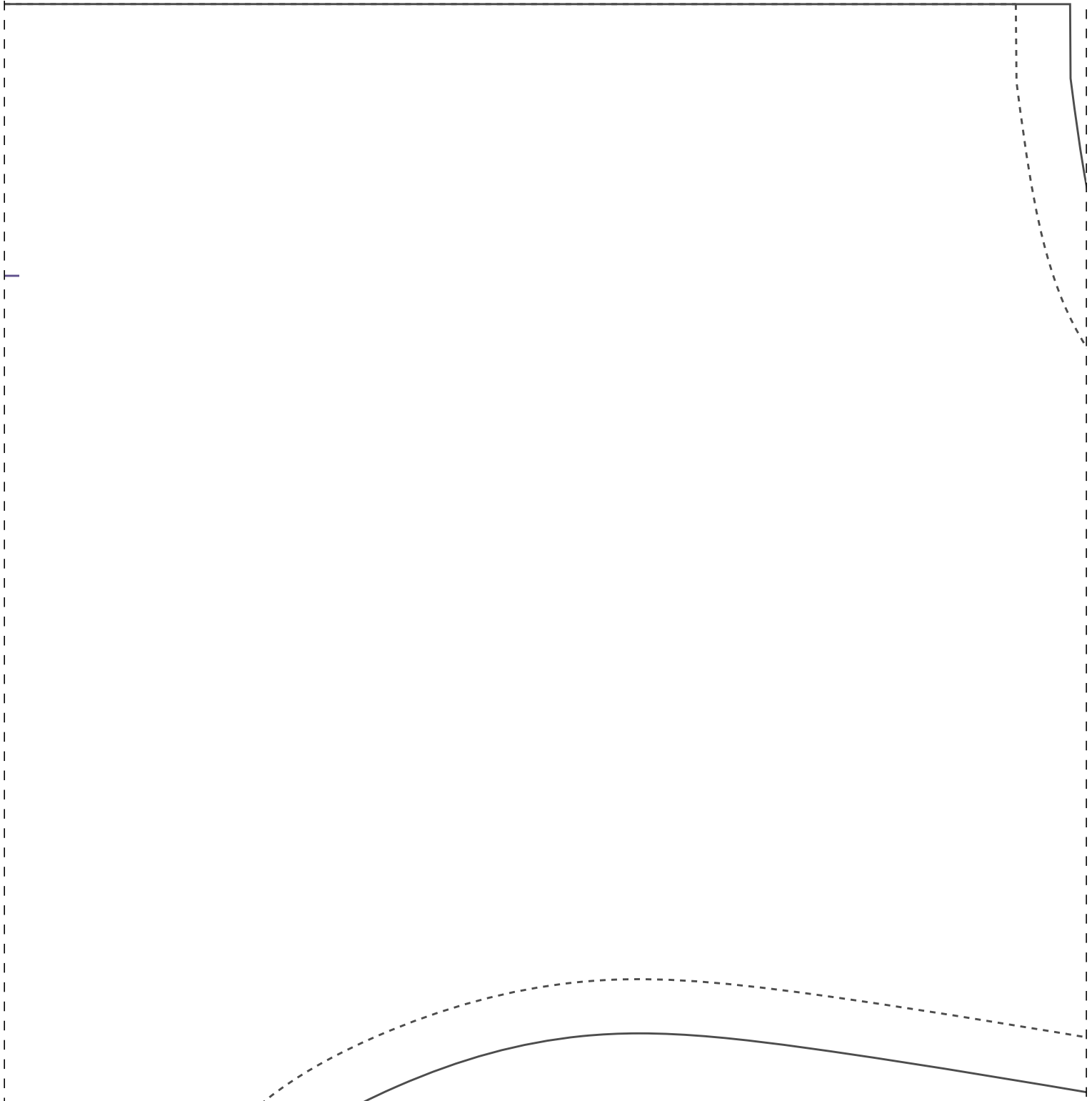


2-4

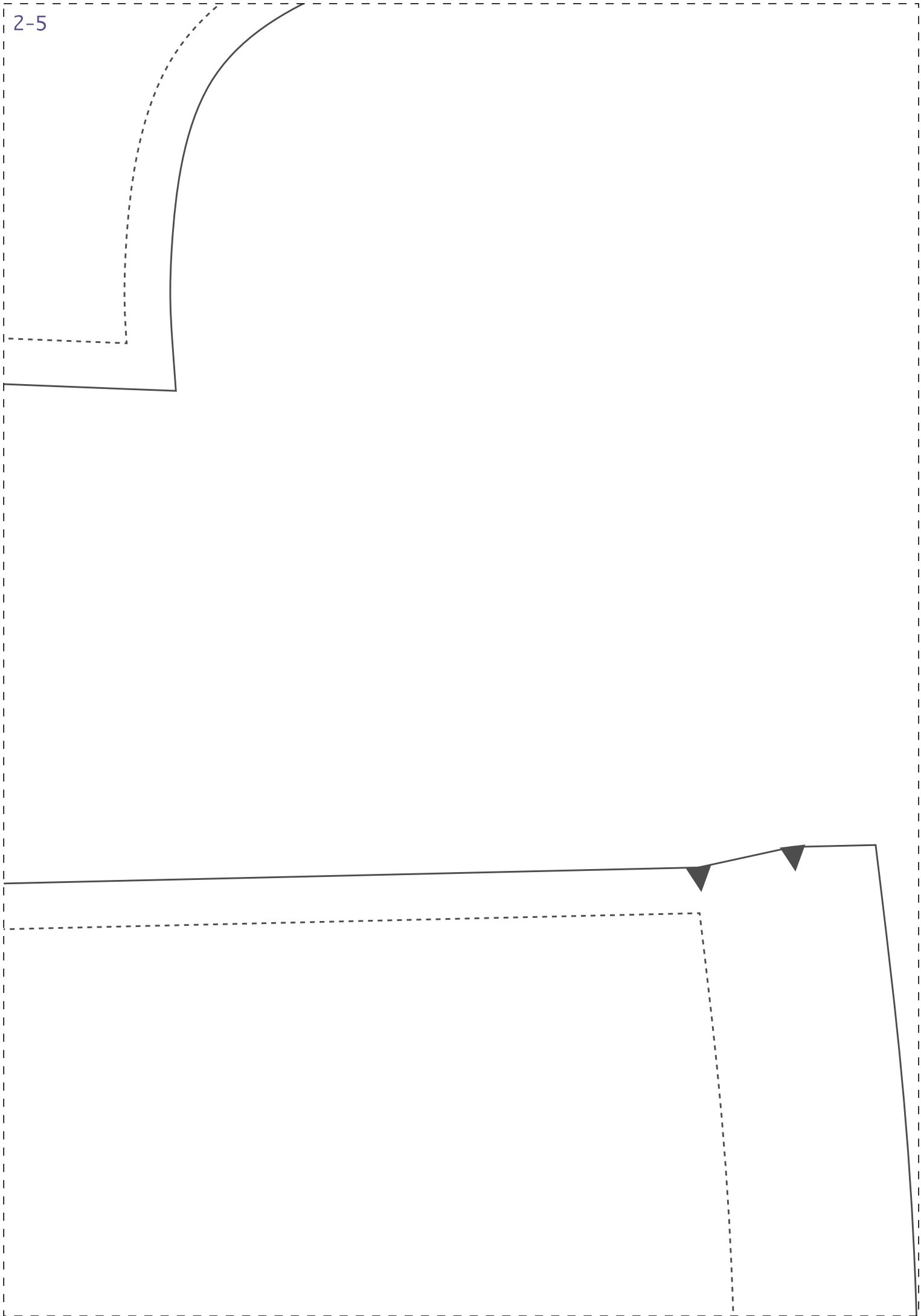




1-5



2-5





1-6

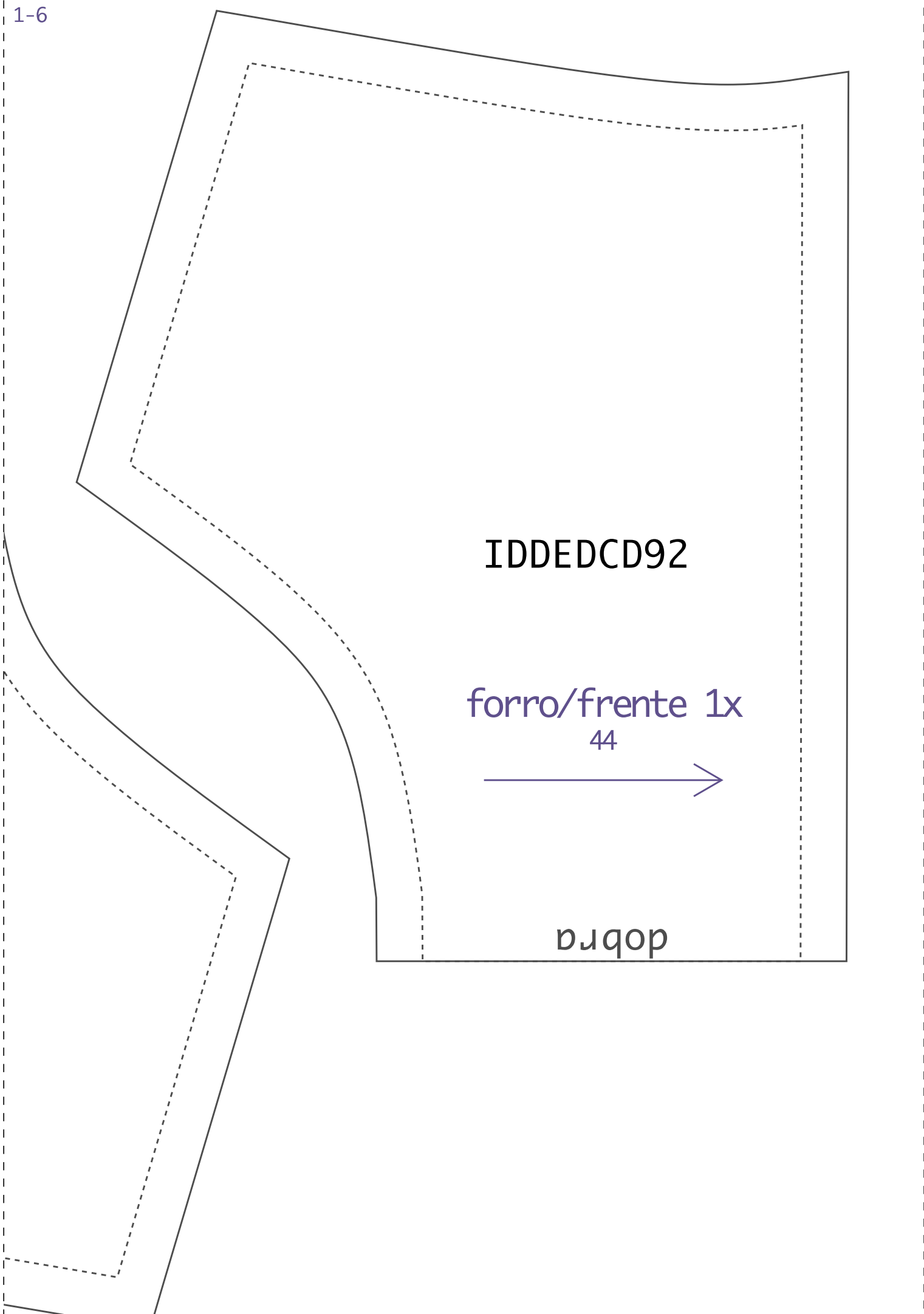
IDDED CD92

forro/frente 1x

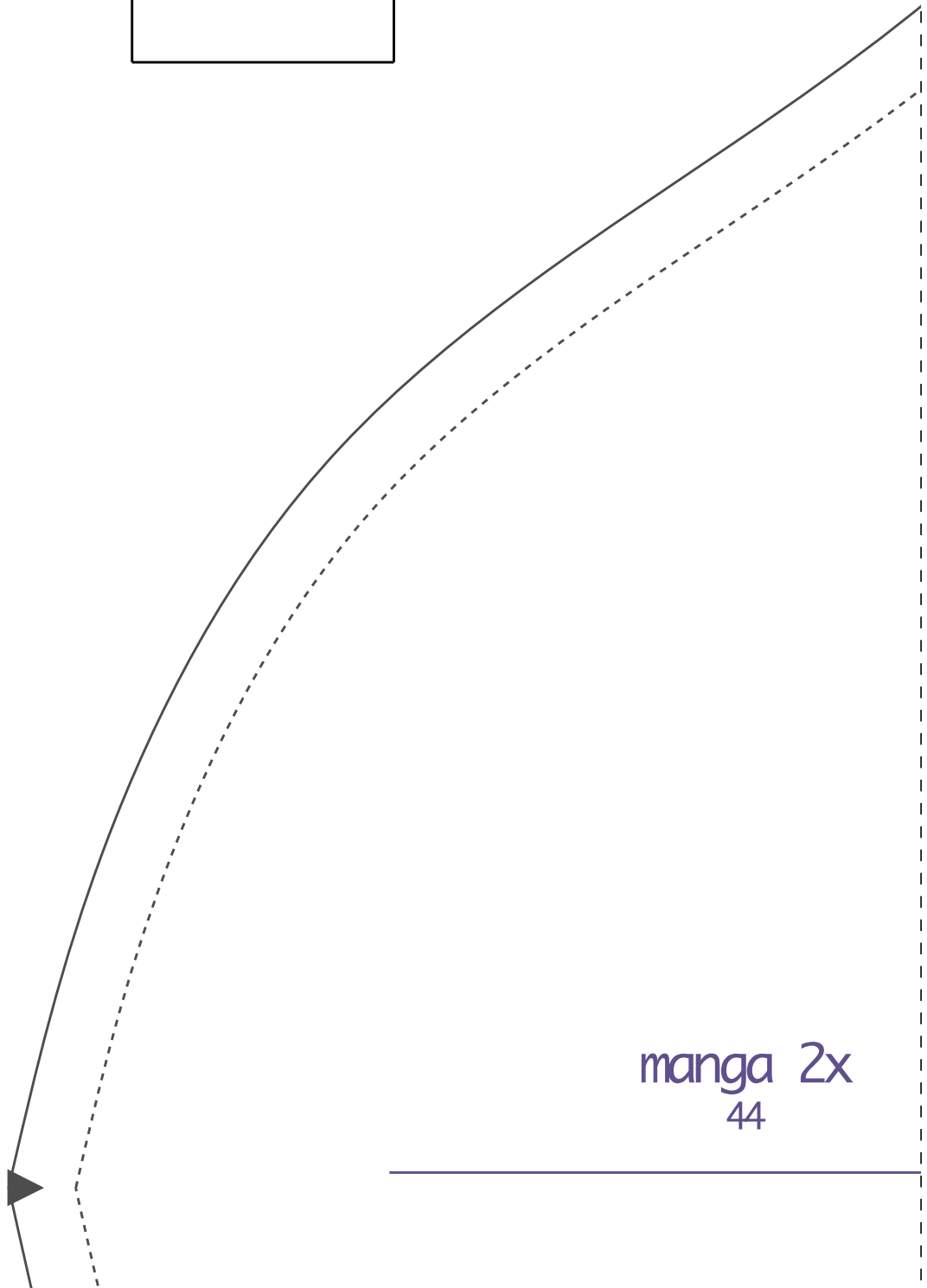
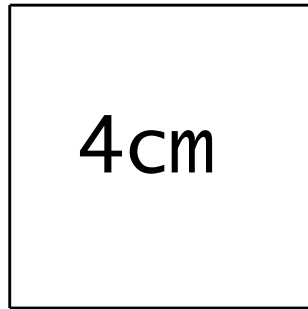
44



borso

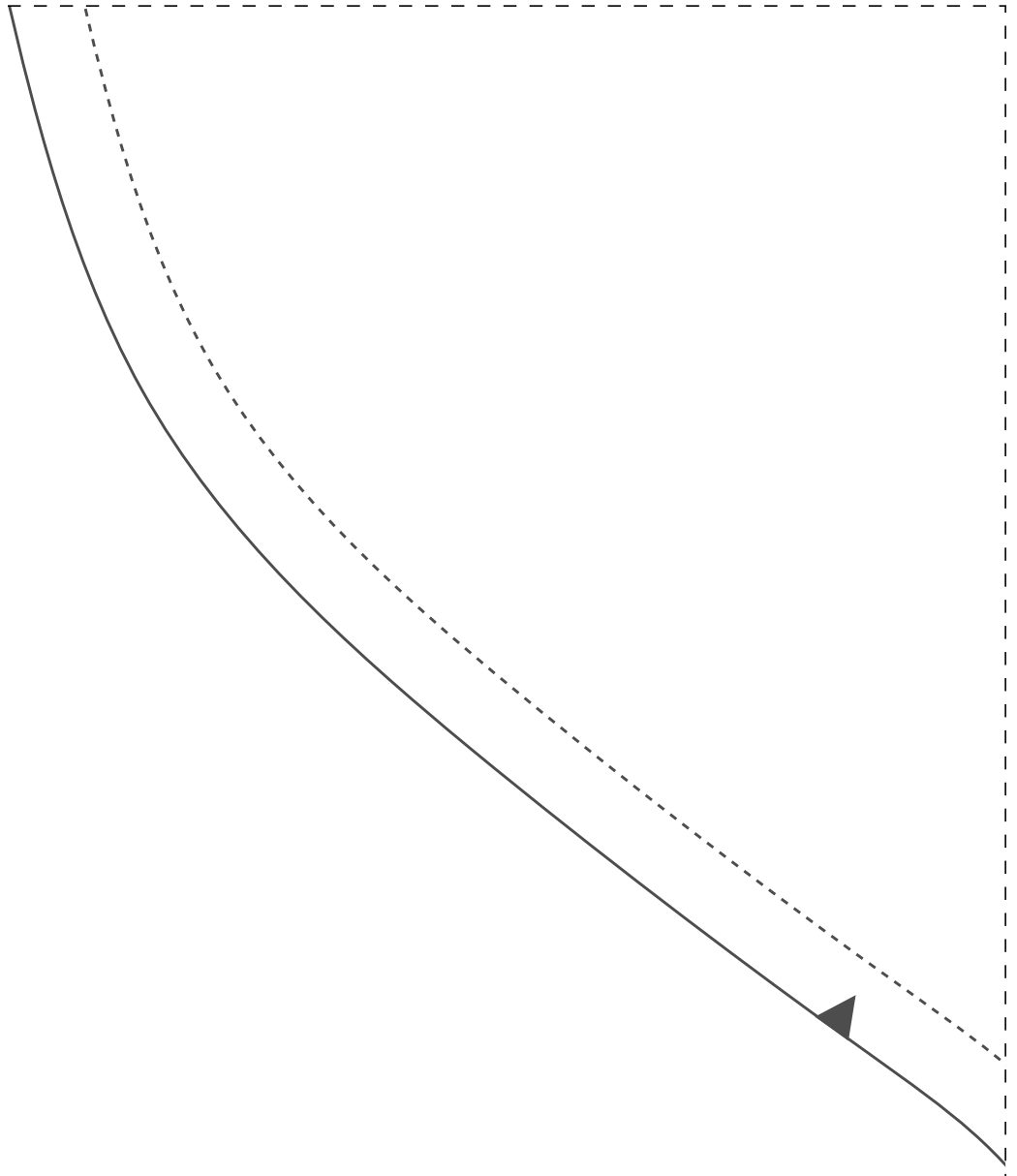


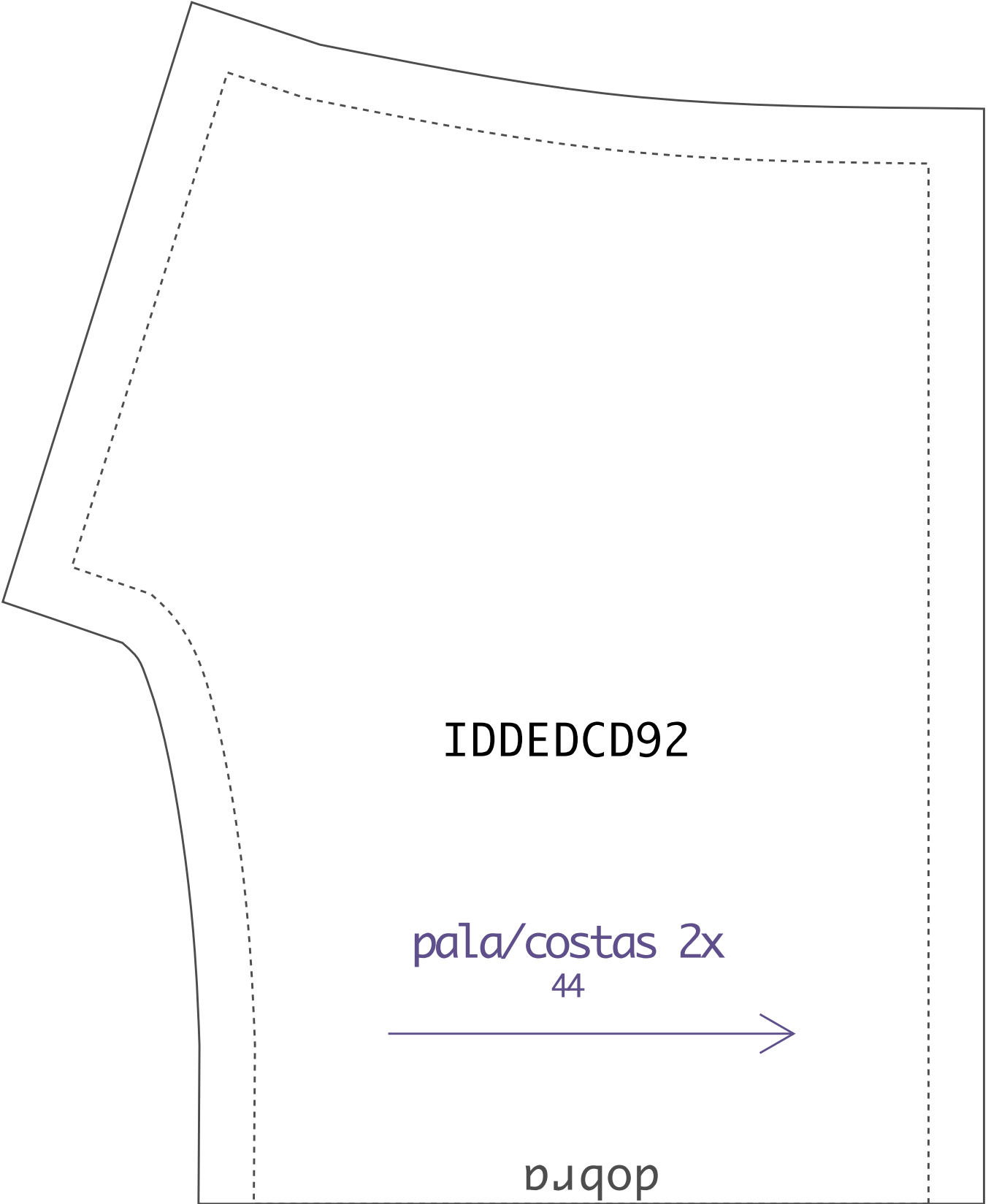
Teste de impressão: ao imprimir seu molde, meça o quadrado que deverá ter a mesma medida informada (4cm), assim você se certificará que ele foi impresso no tamanho correto.



manga 2x
44

3-6





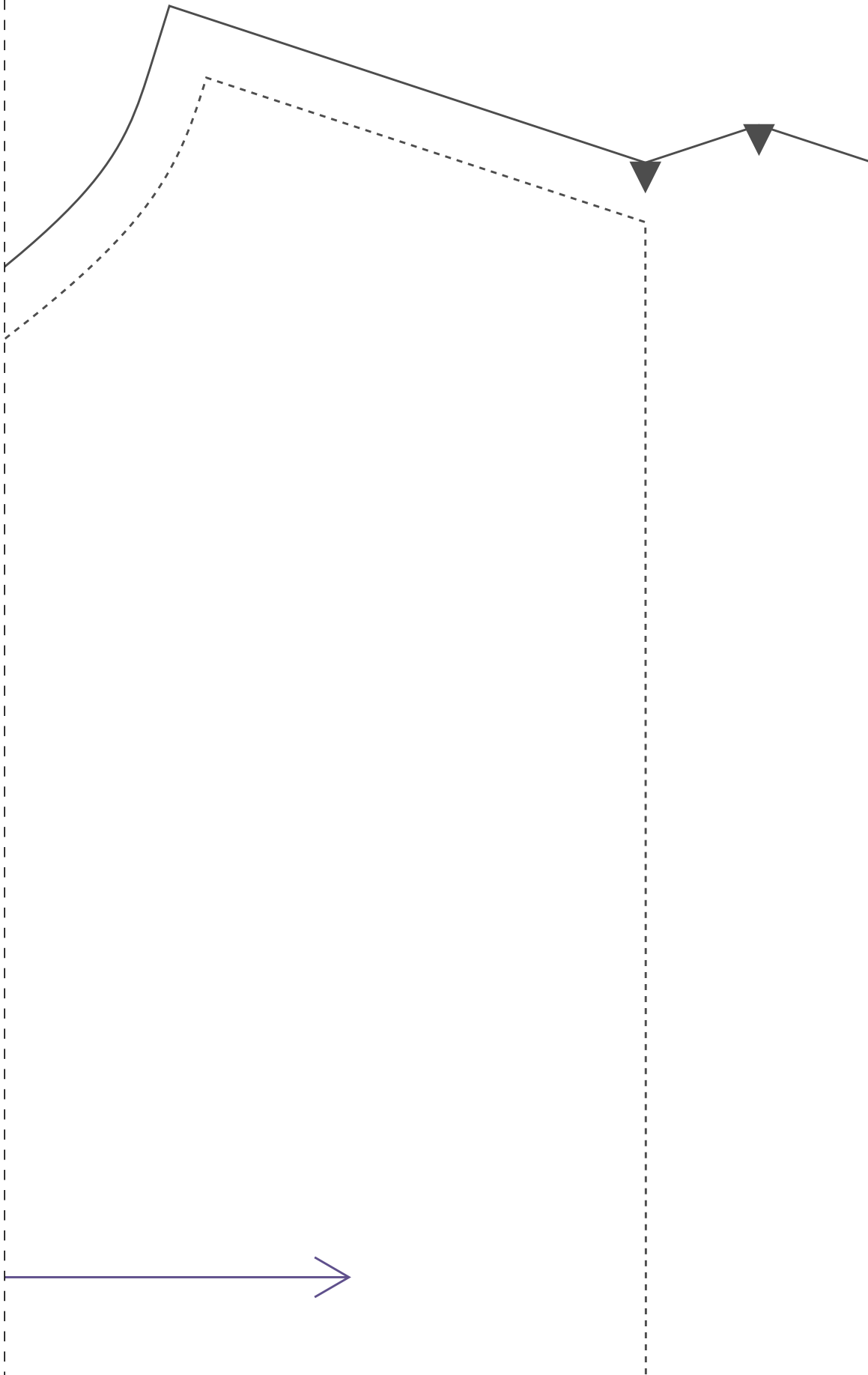
IDDED CD92

paLa/costas 2x
44



dobra

2-7



IDDEDCD92

