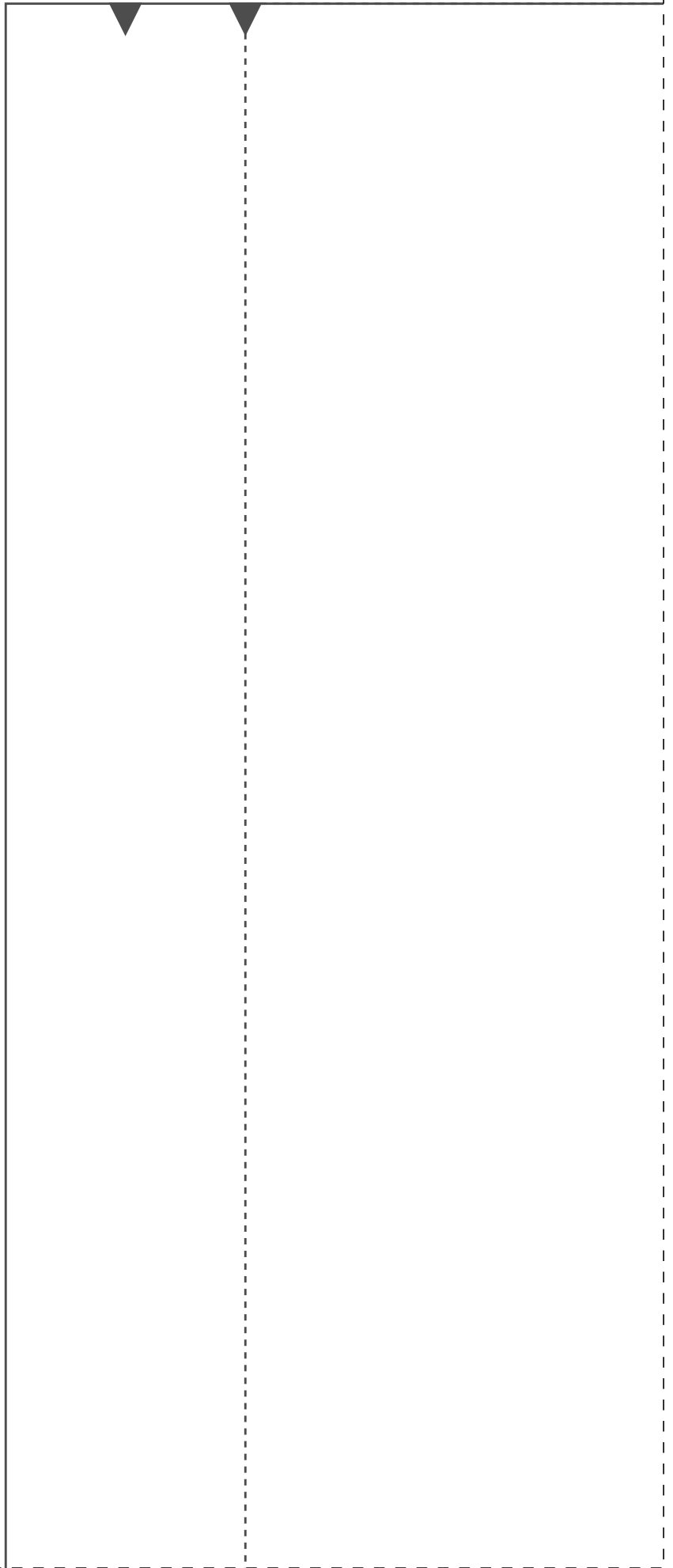
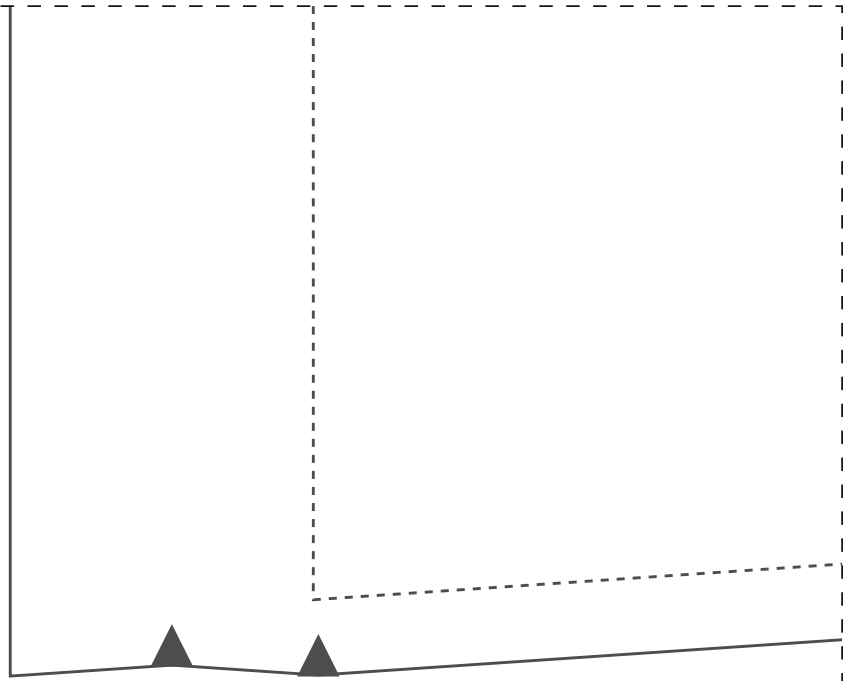


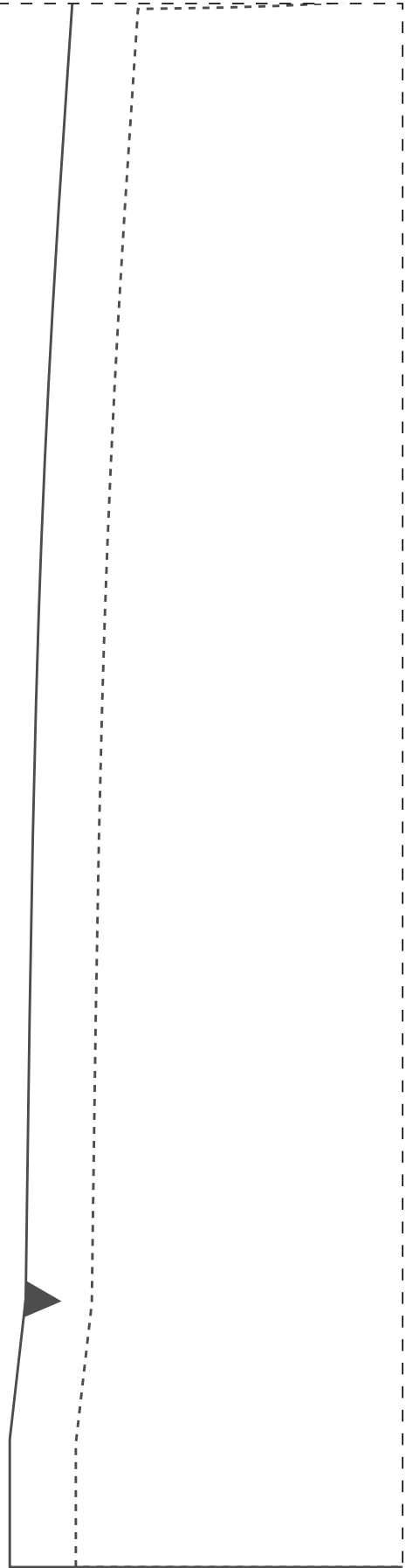
1-1



2-1

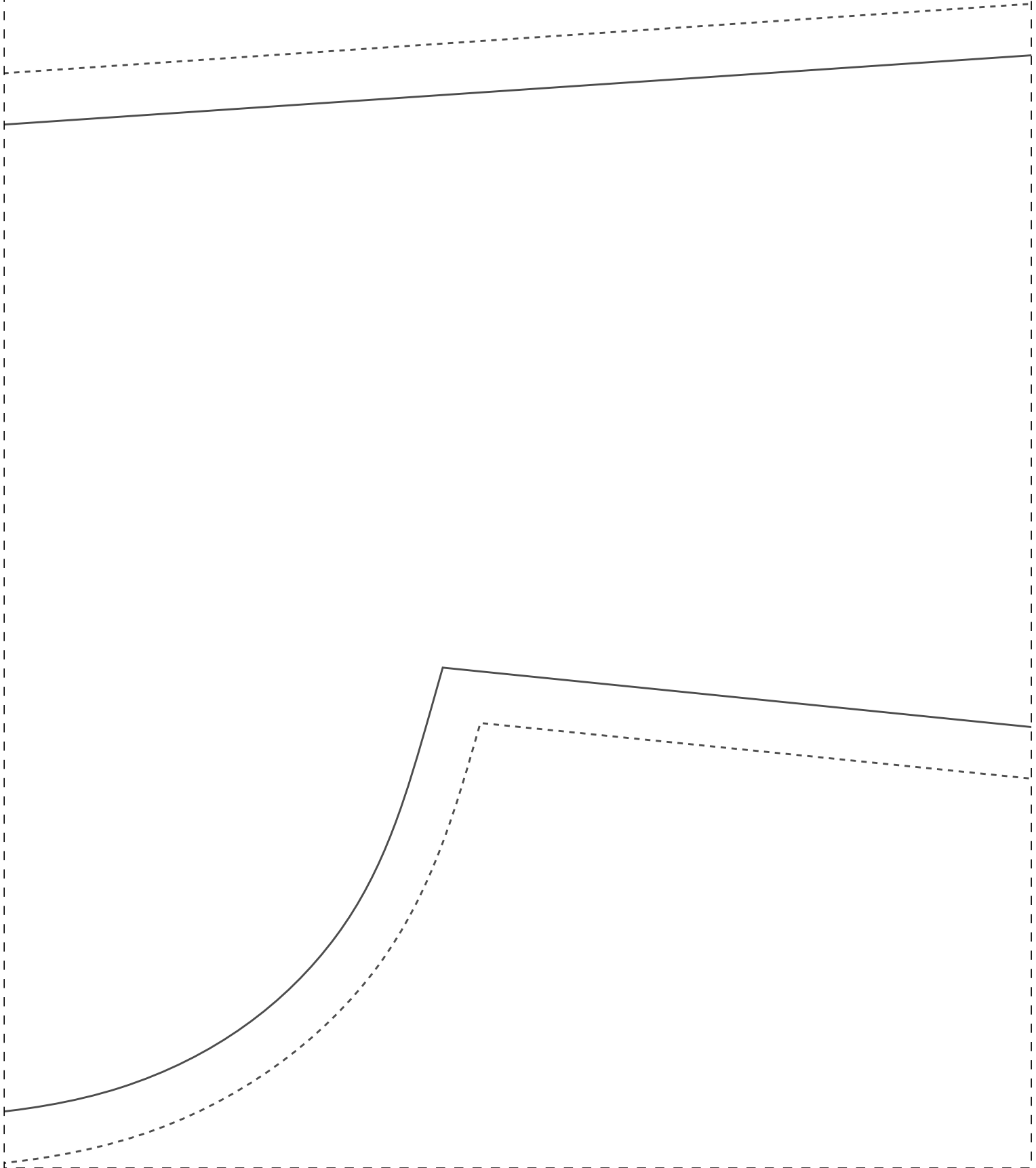


3-1



1-2





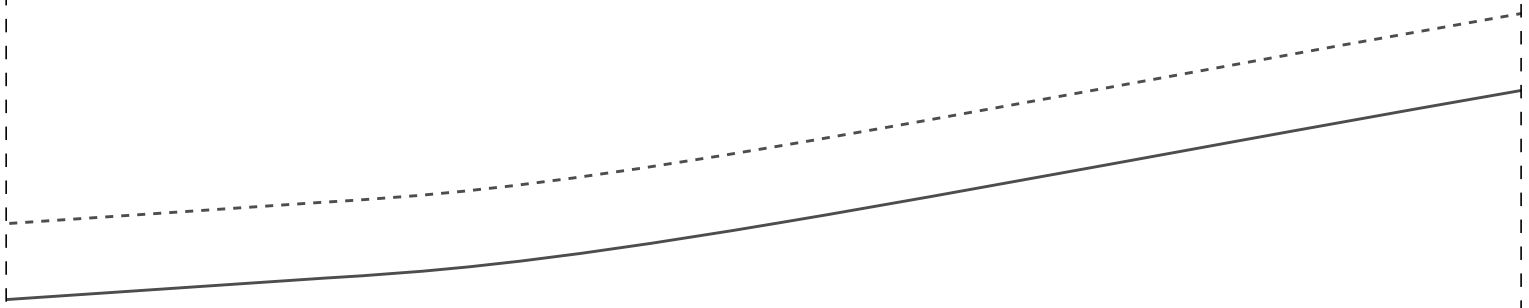


1-3

d

frente 1x  
46

2-3





## FICHA TÉCNICA:

- Tecido plano 1,4m largura
- Viscose, viscolinho, linho, tencel, tricoline ou similares
- Pala dupla
- 2m para os tamanhos 36 ao 44
- 3,2m para os tamanhos 46 A0 54

IDDED92

costas 1x  
46

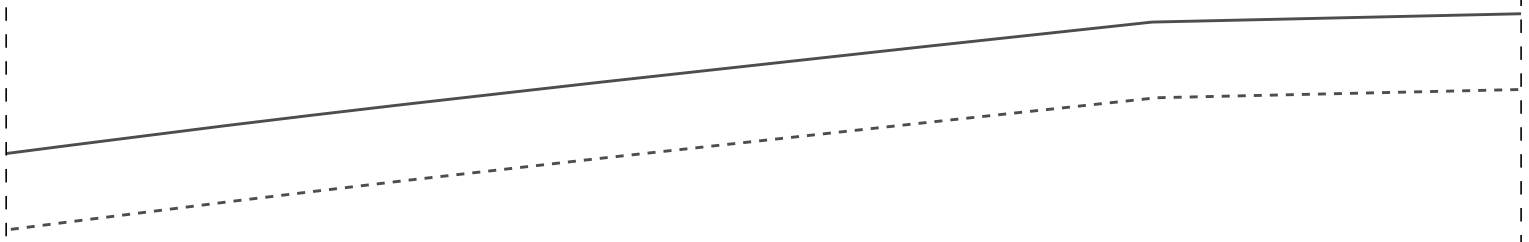
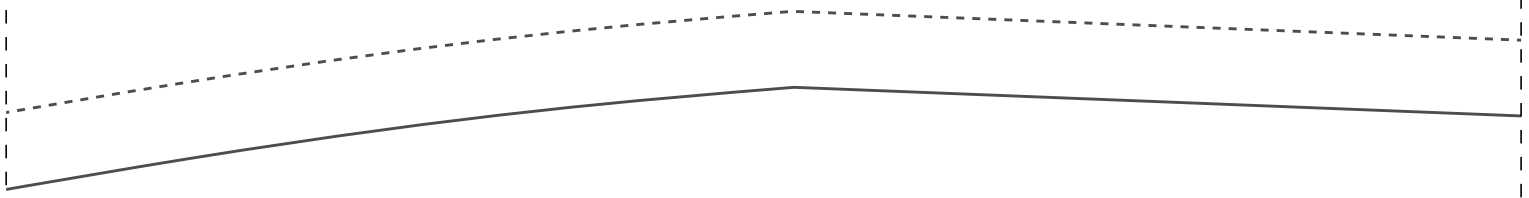
obra

IDDEDCCD92

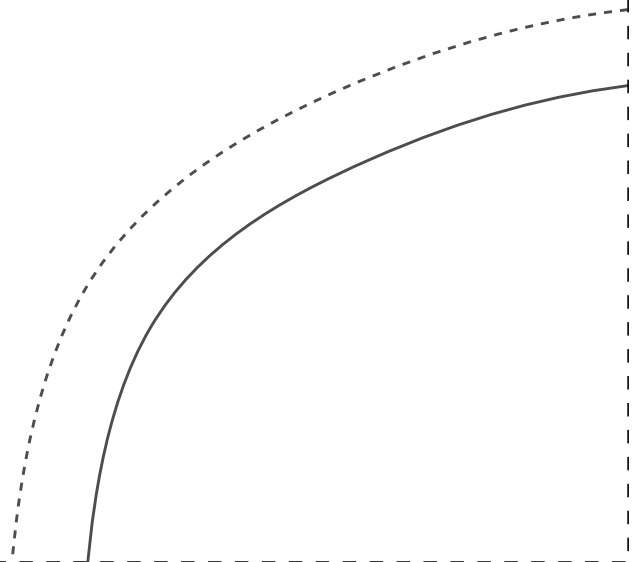
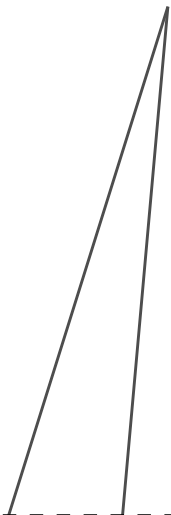
PROIBIDA REVENDA

Instituto Diana Demarchi  
Escola de Costurar  
Vestido Pala e Prega  
Costas para iniciantes

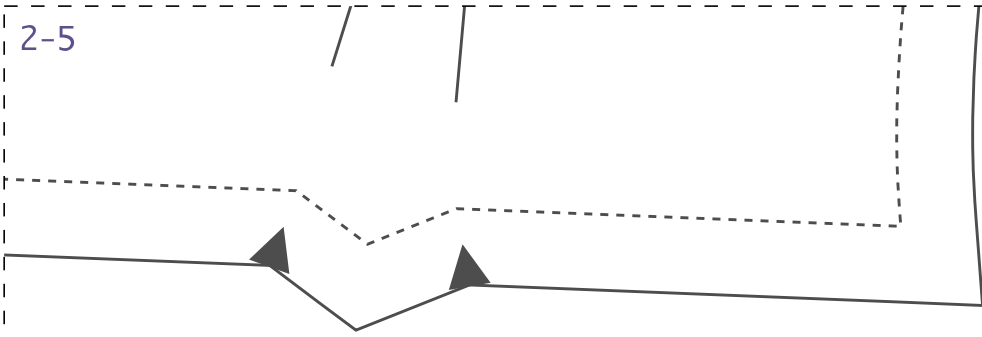
2-4





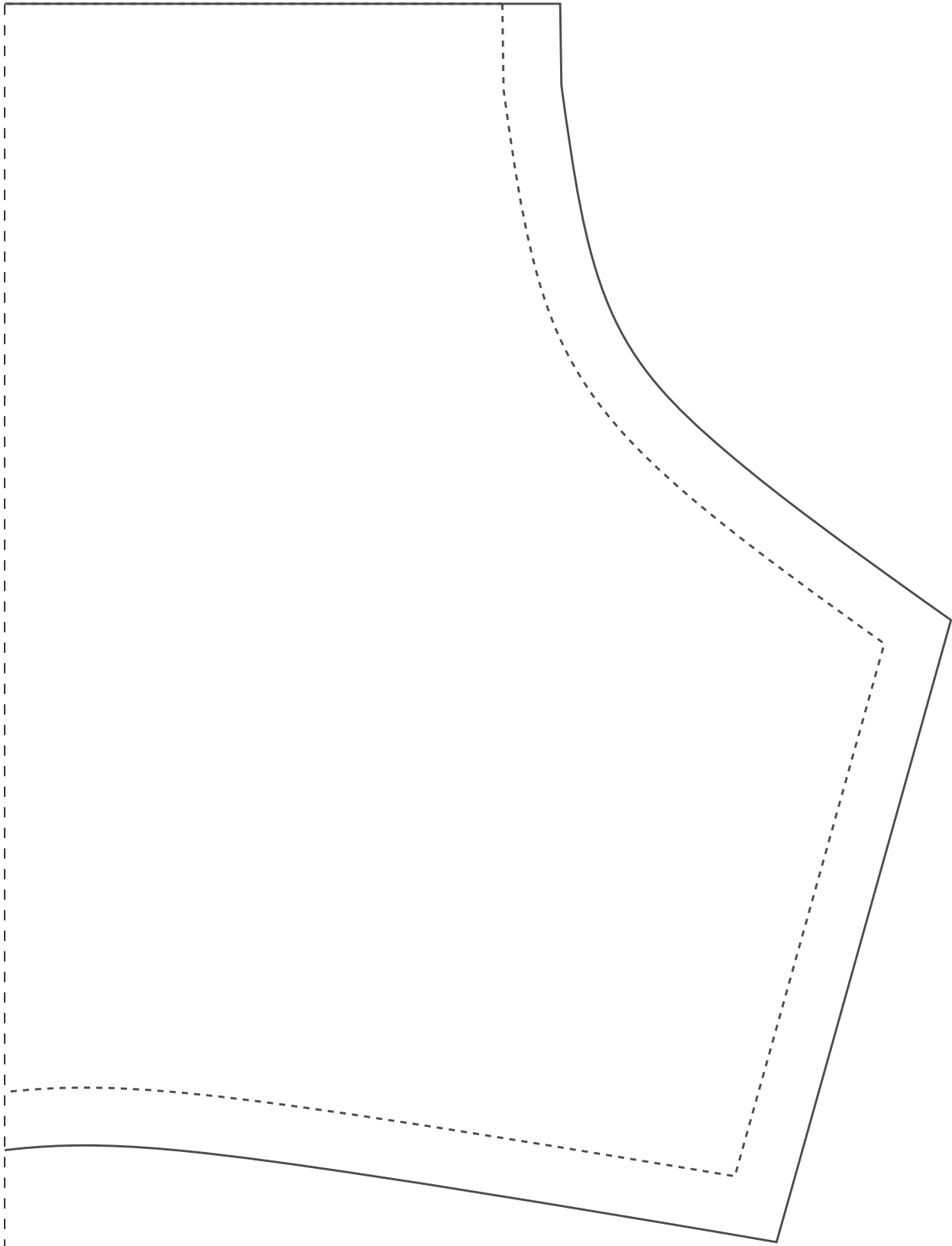


2-5



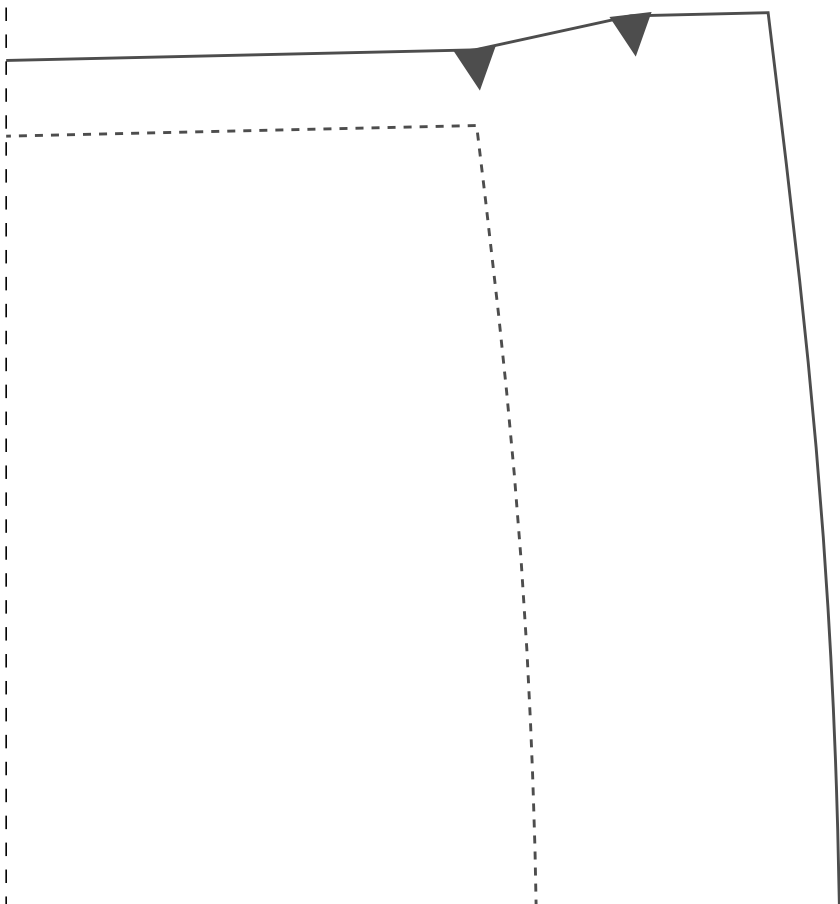
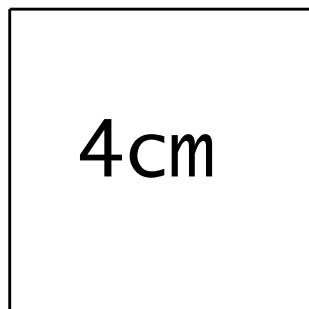
3-5



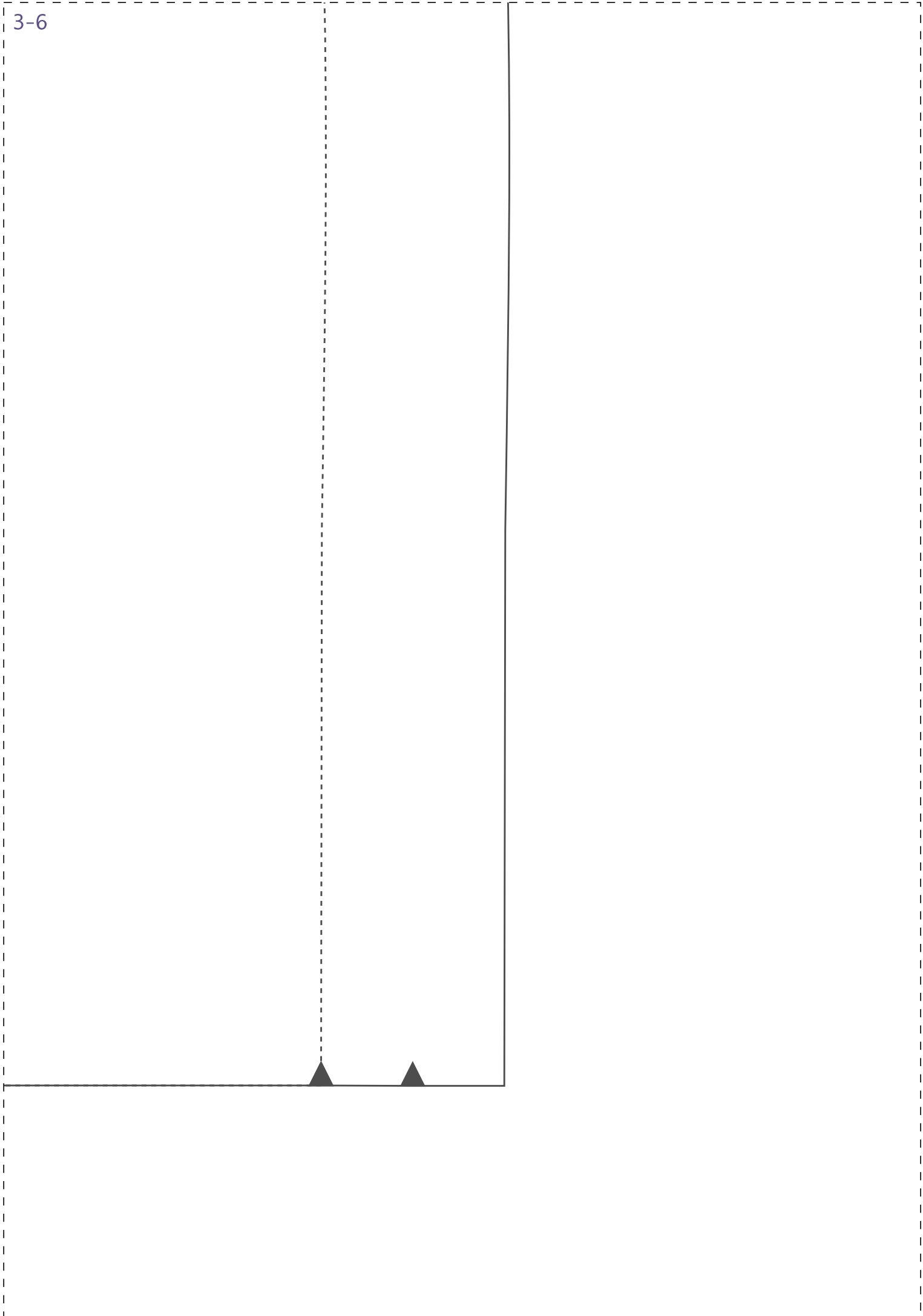


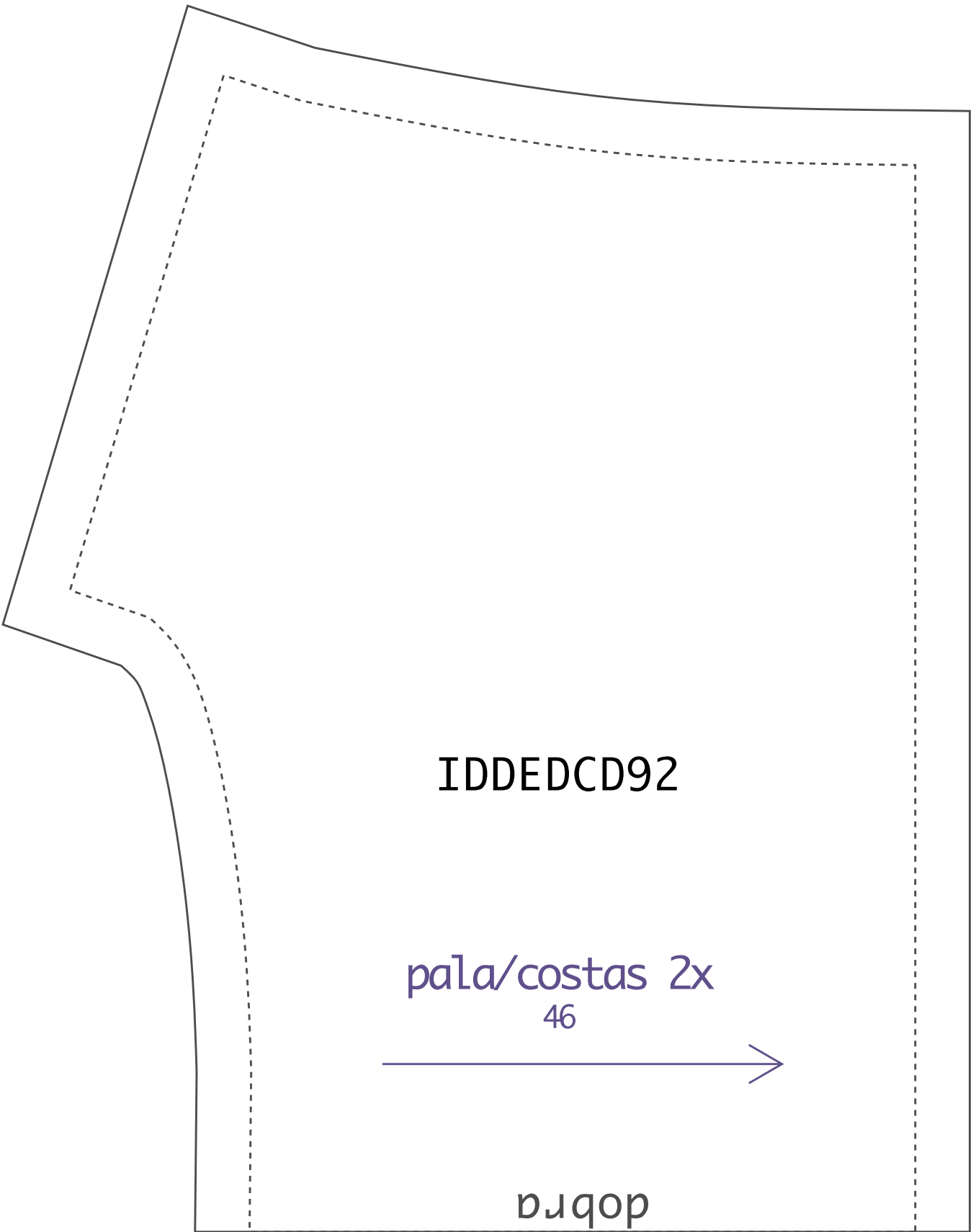


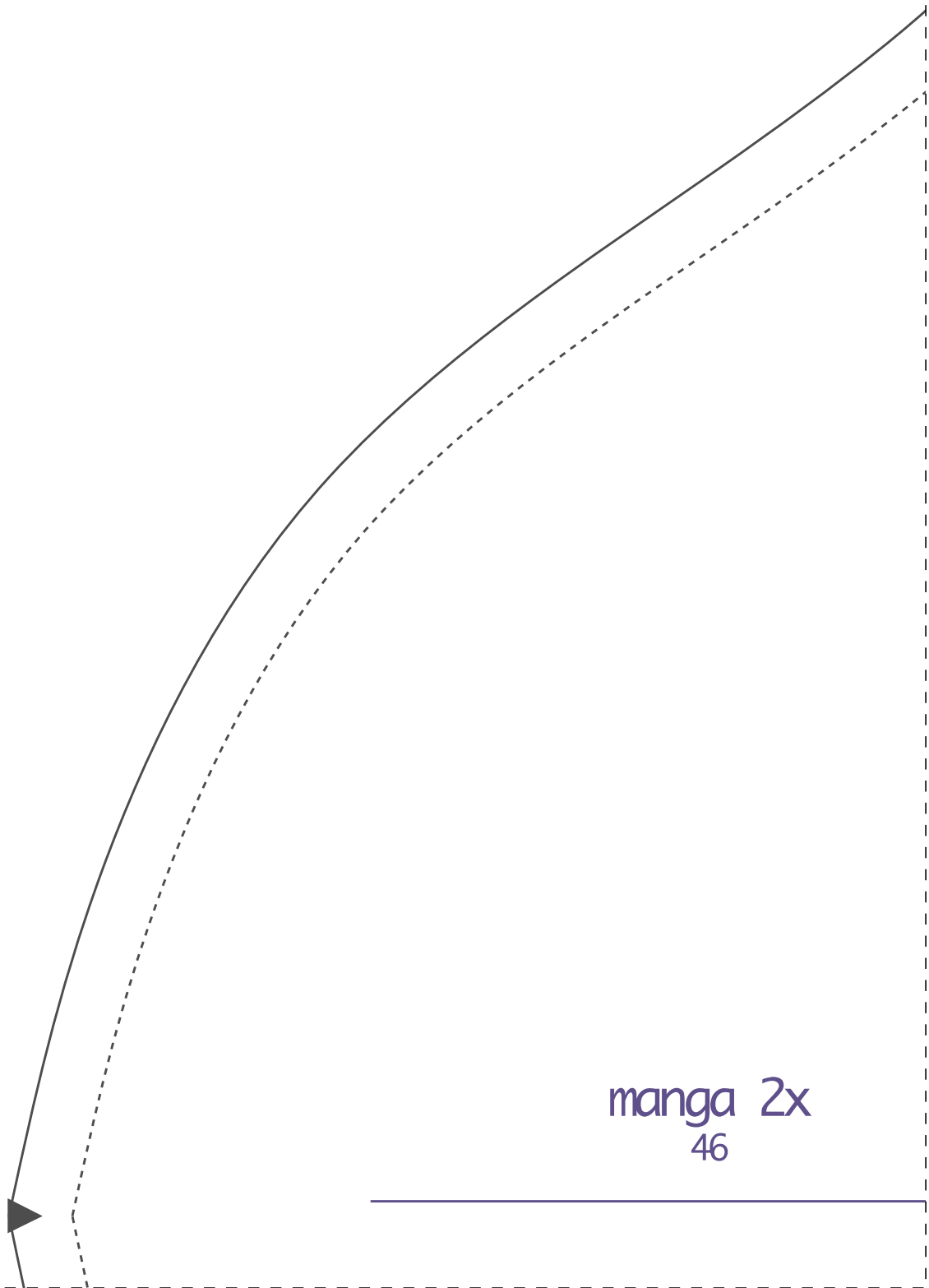
Teste de impressão: ao imprimir seu molde, meça o quadrado que deverá ter a mesma medida informada (4cm), assim você se certificará que ele foi impresso no tamanho correto.



3-6



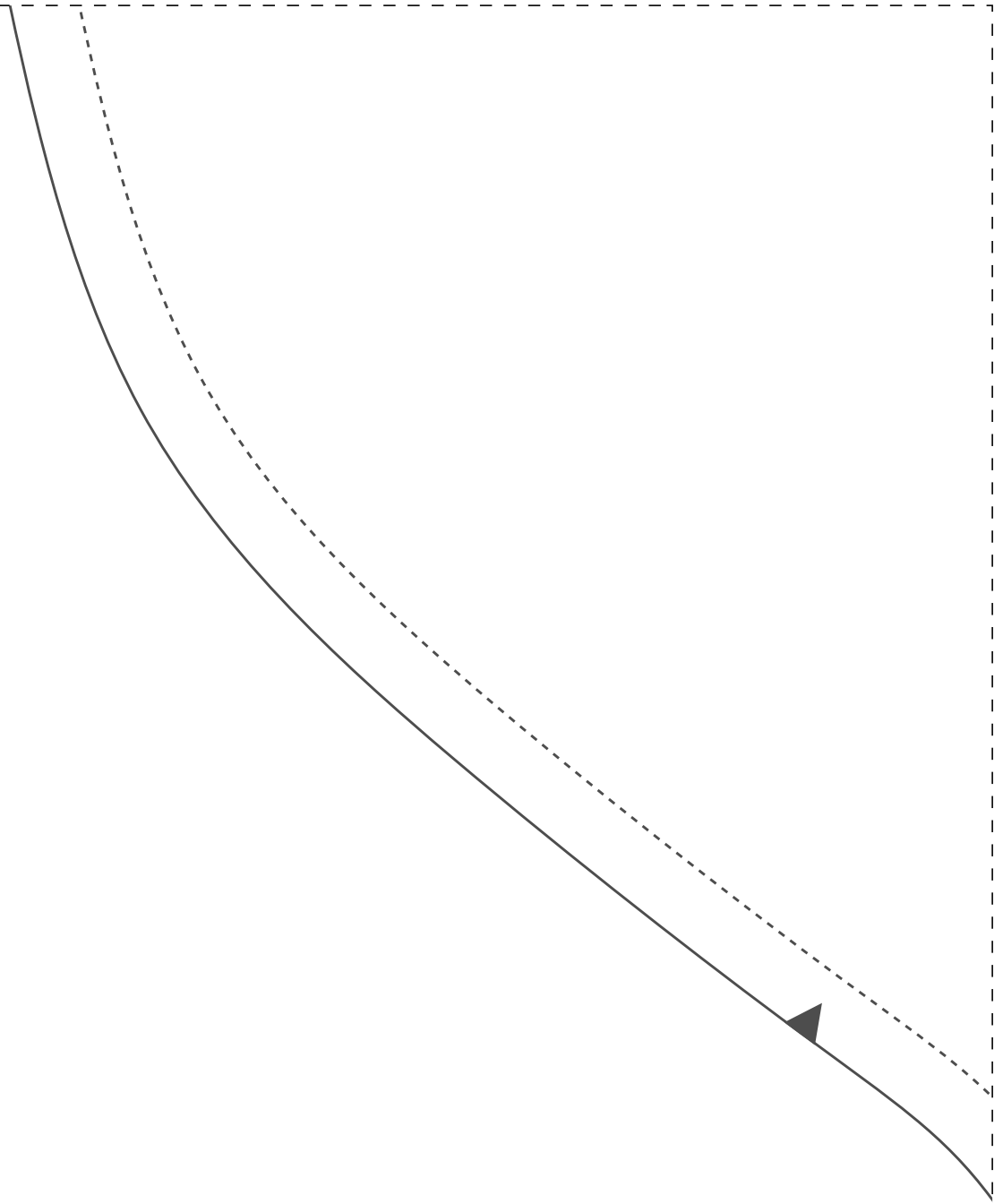


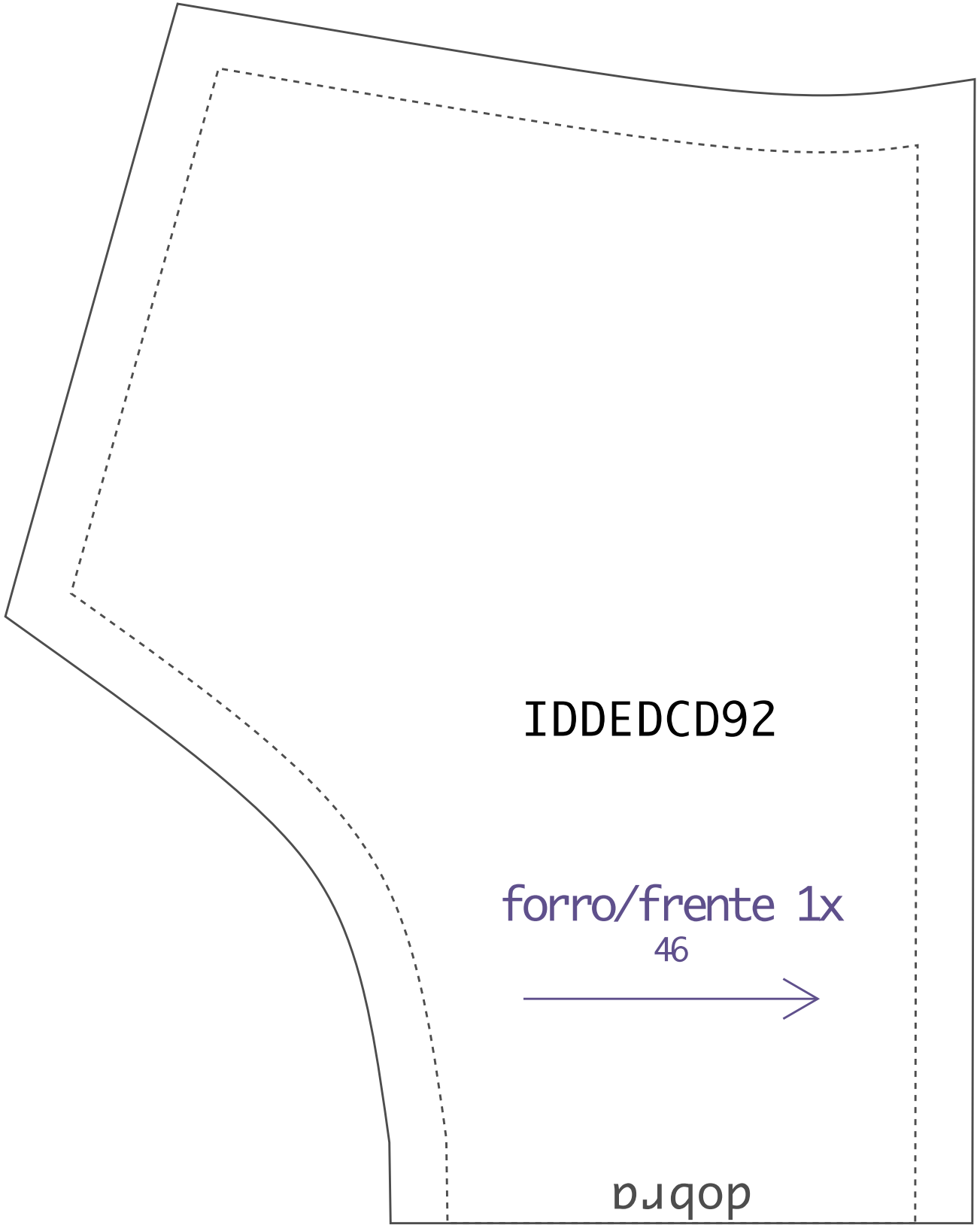


manga 2x  
46



3-7





IDDED CD92

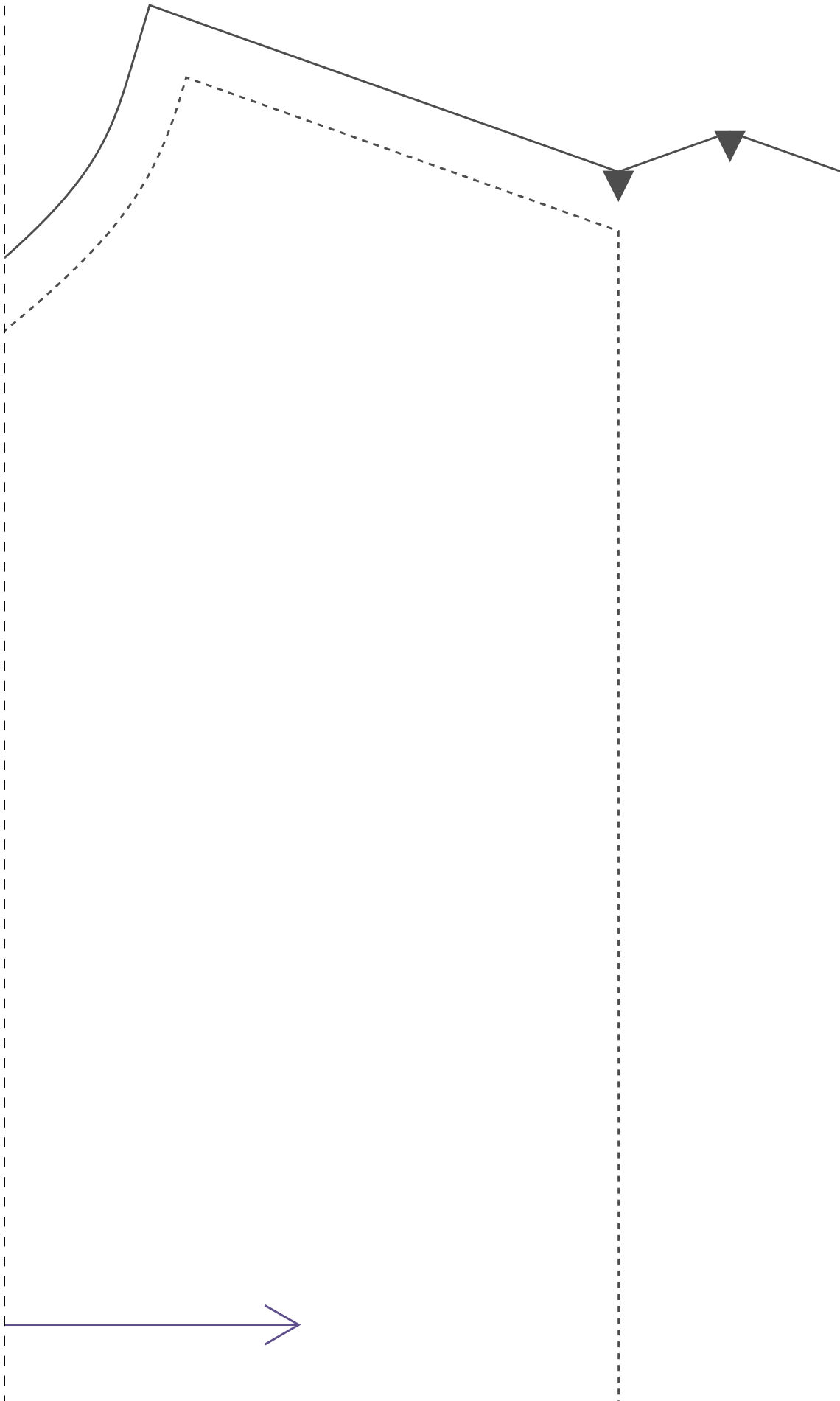
forro/frente 1x

46



dobra

2-8



IDDED CD92

