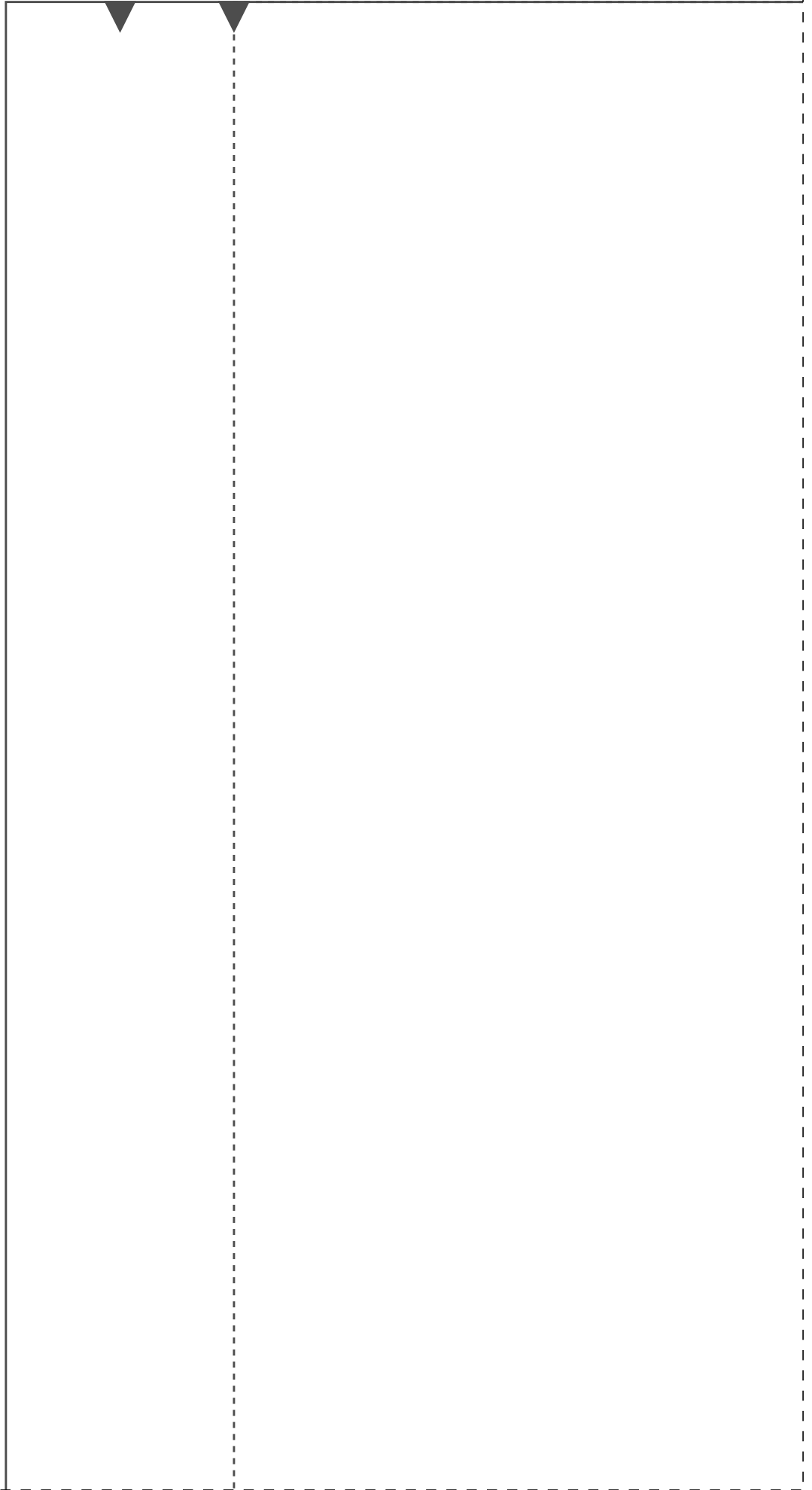
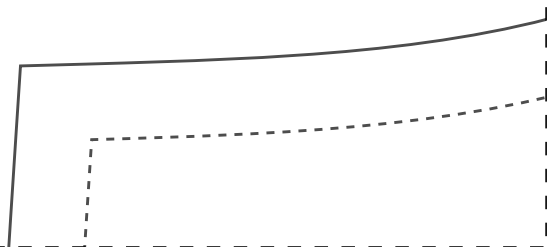
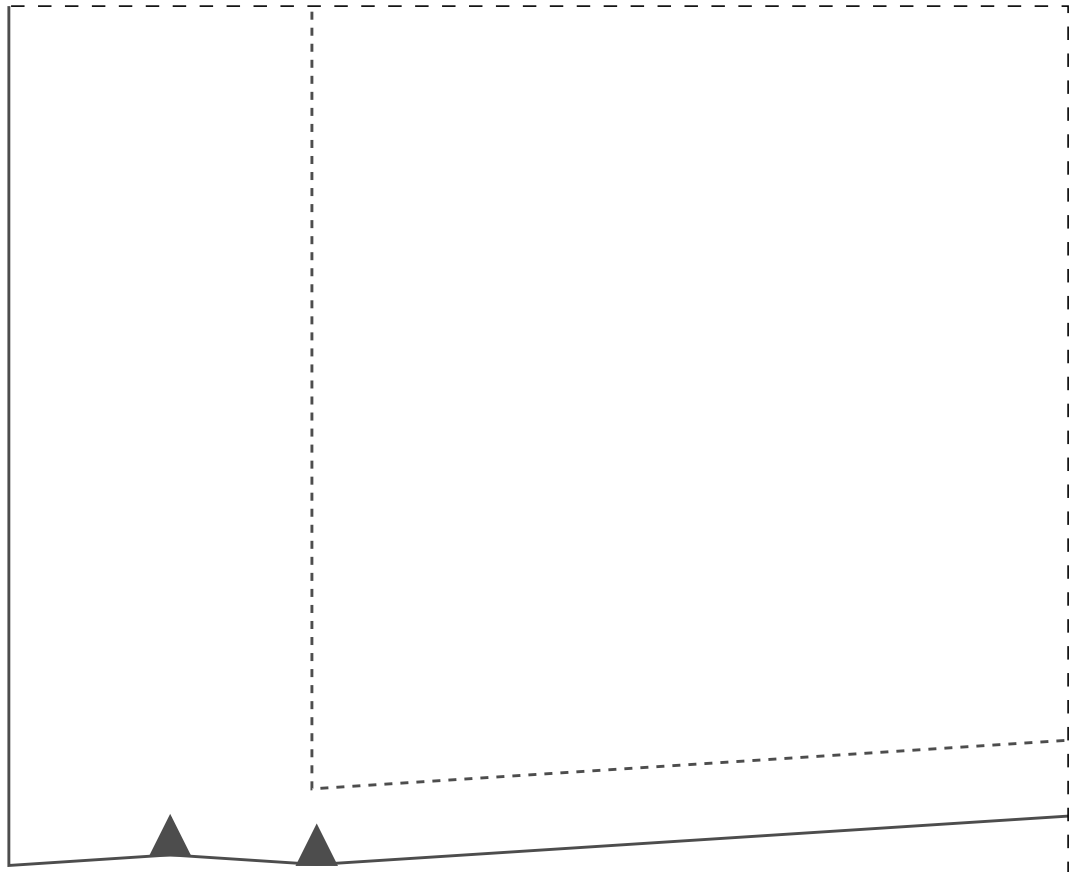


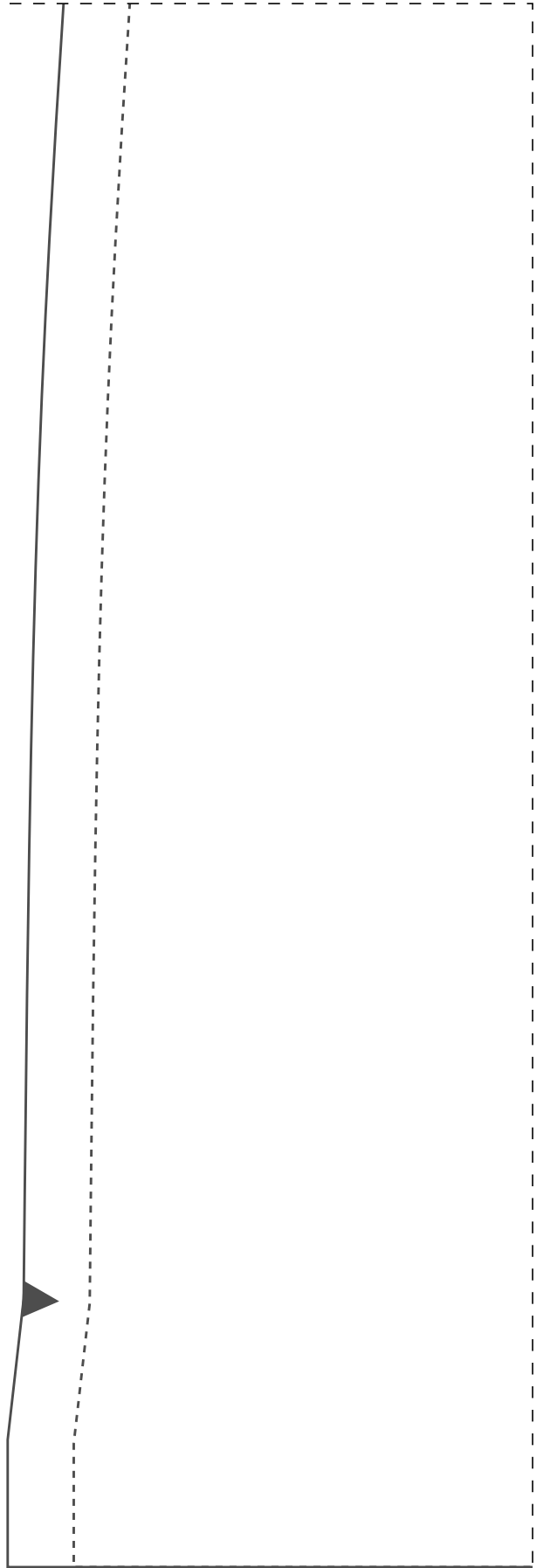
1-1



2-1

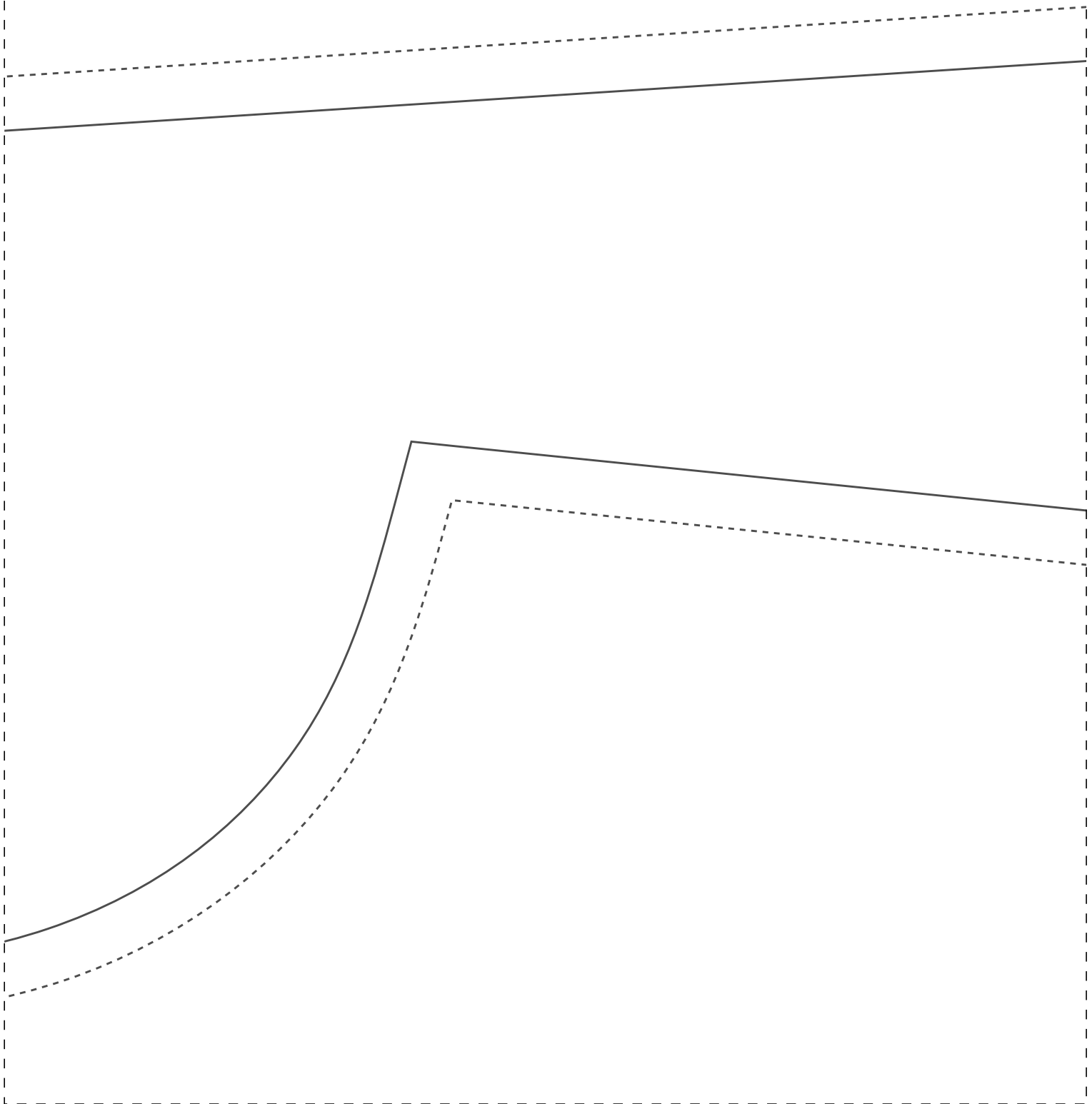


3-1



1-2



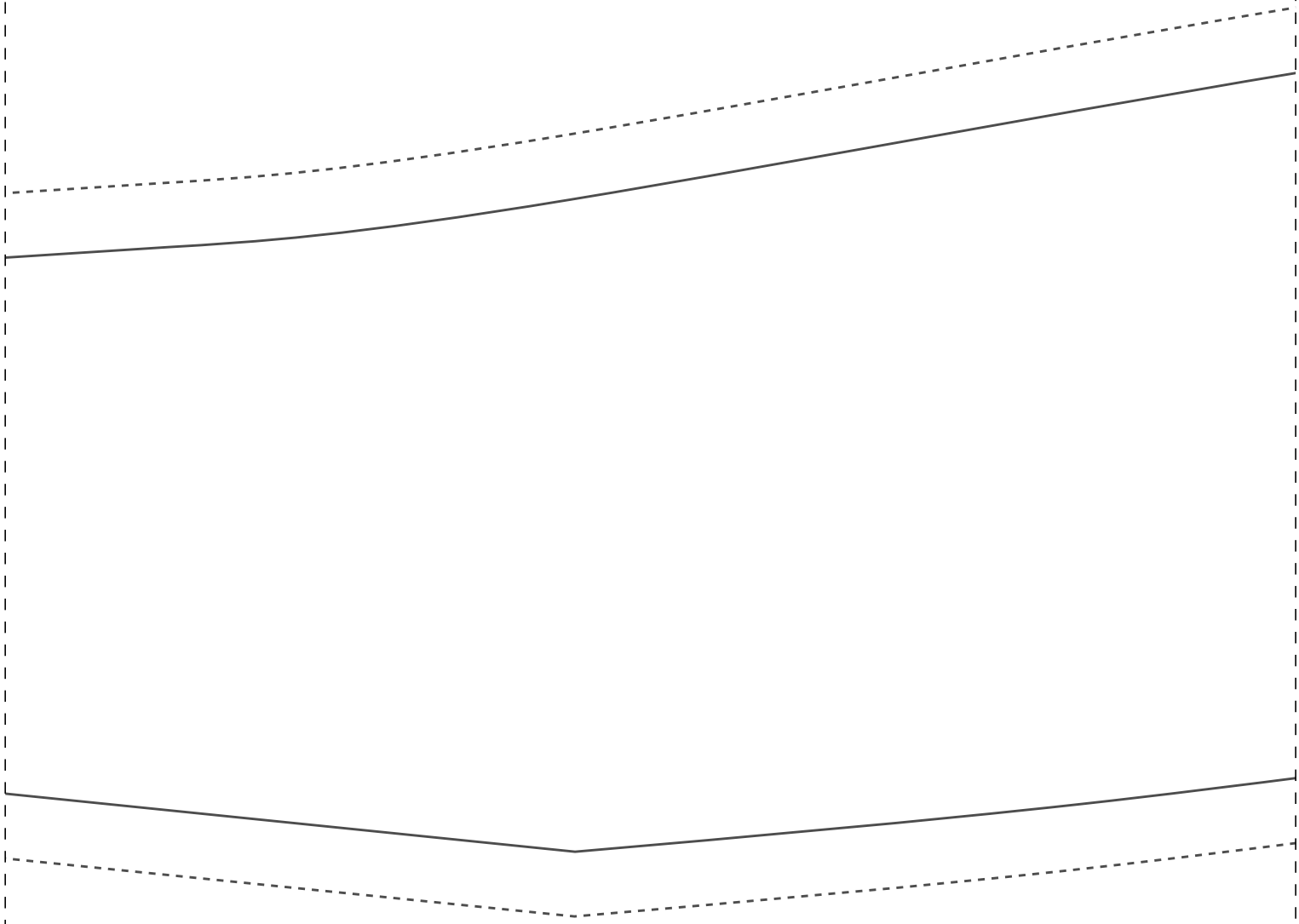




1-3

dok

frente 1x
50



FICHA TÉCNICA:

- Tecido plano 1,4m largura
- Viscose, viscolinho, linho, tencel, tricoline ou similares
- Pala dupla
- 2m para os tamanhos 36 ao 44
- 3,2m para os tamanhos 46 A0 54

IDDED92

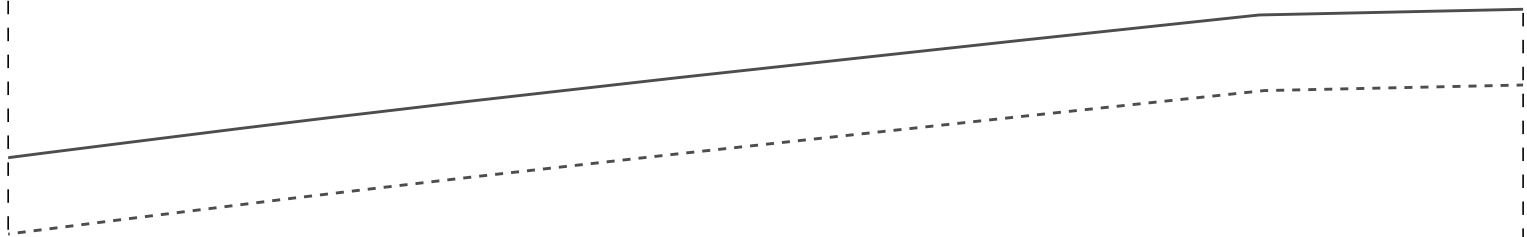
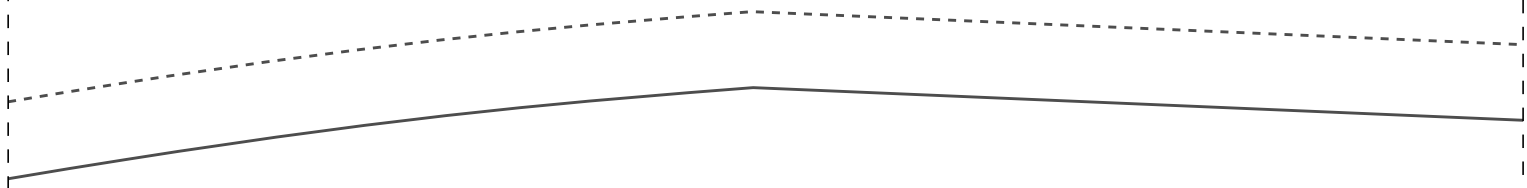
costas 1x
50

ora

IDDEDCCD92

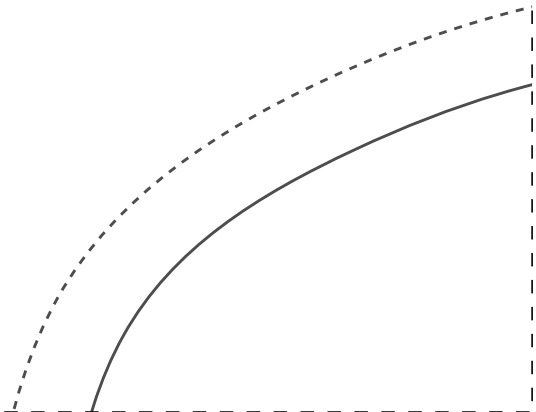
PROIBIDA REVENDA

Instituto Diana Demarchi
Escola de Costurar
Vestido Pala e Prega
Costas para iniciantes

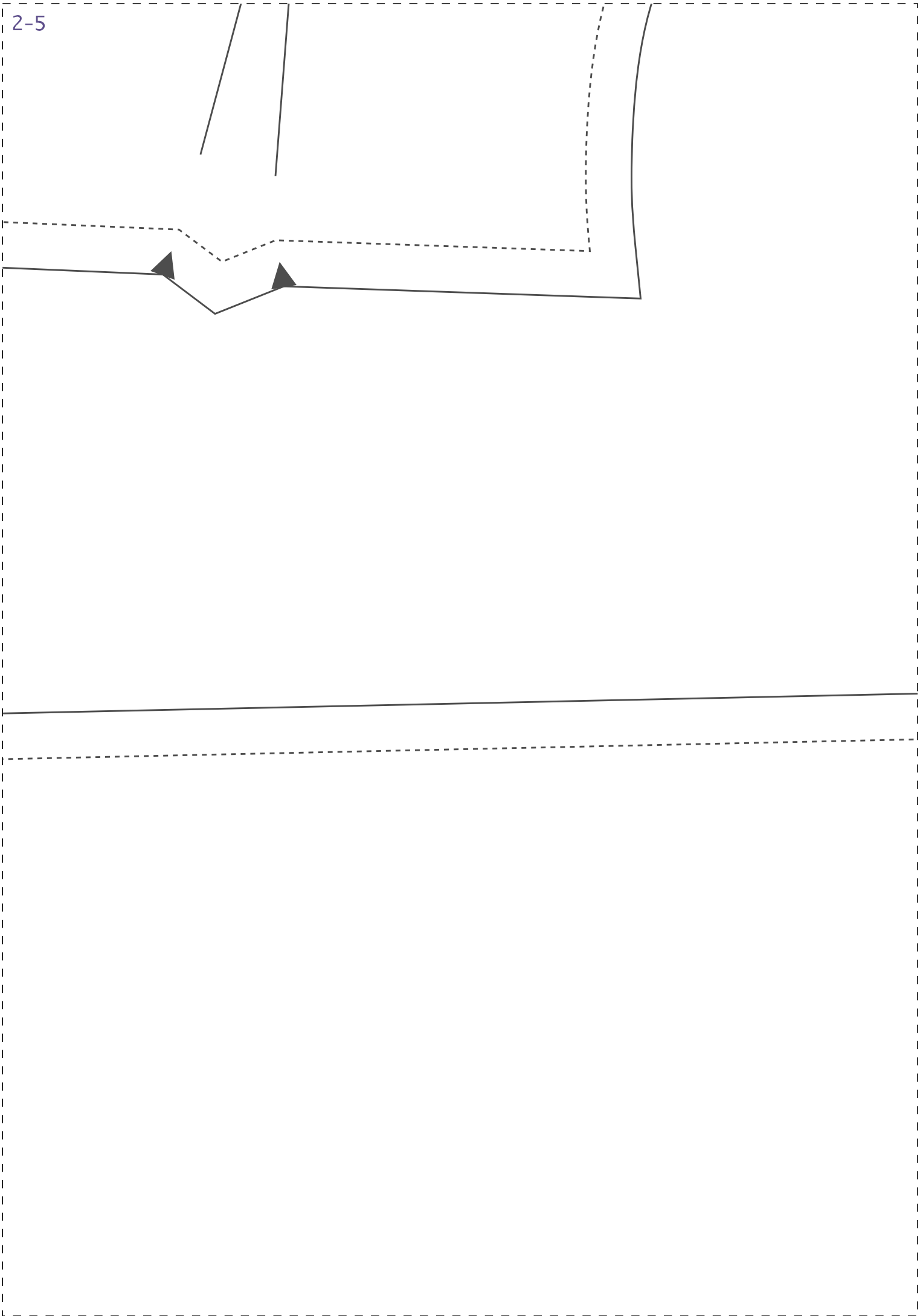


3-4

арқор

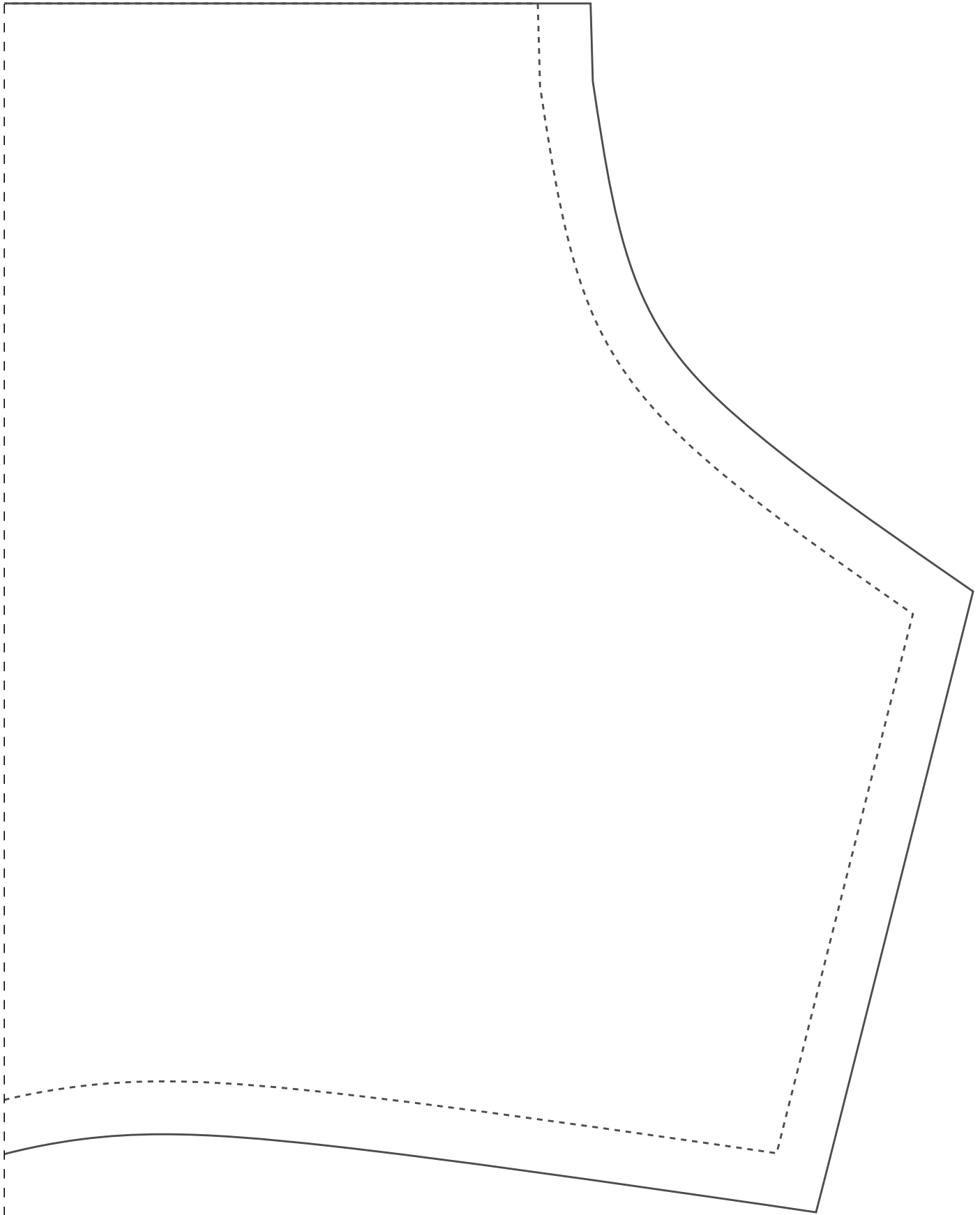


2-5

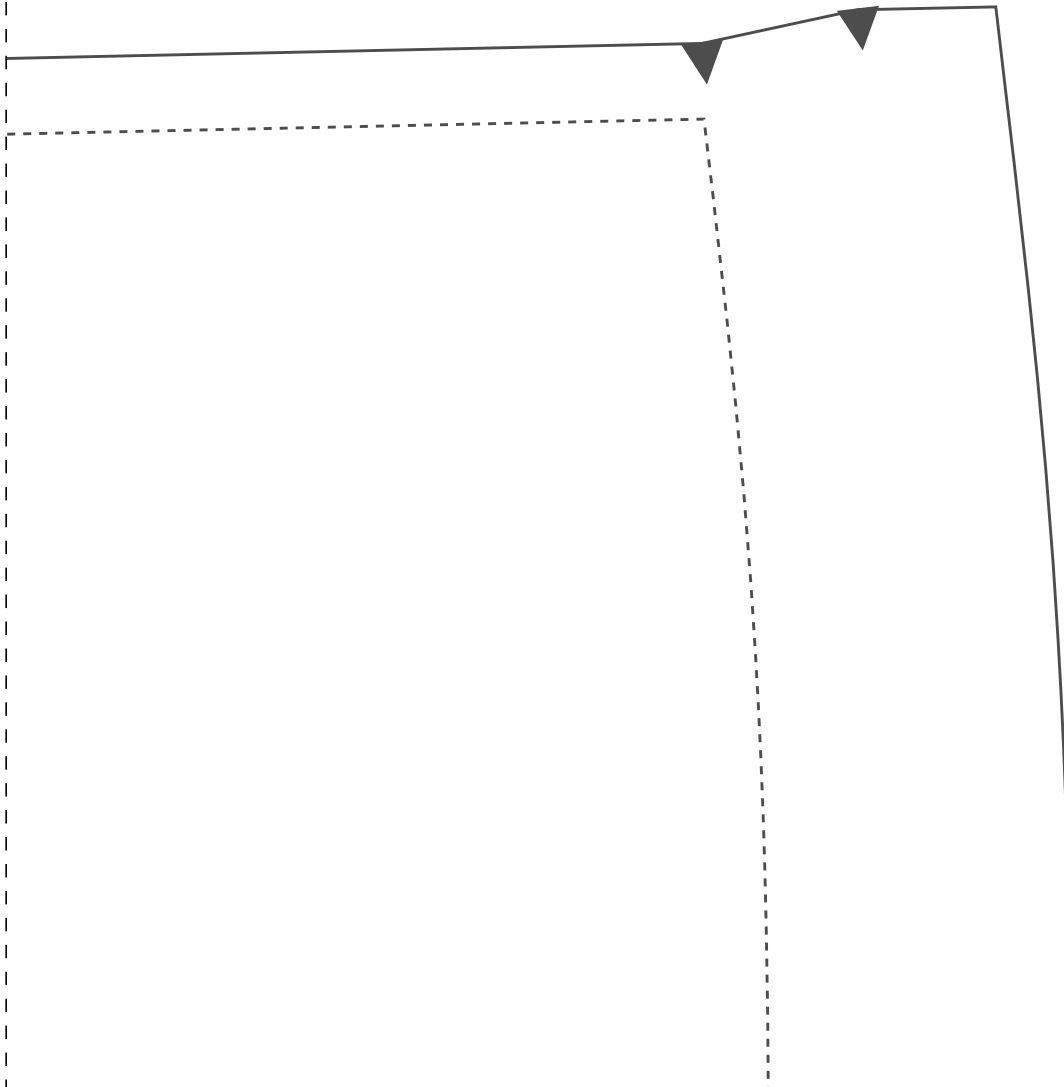
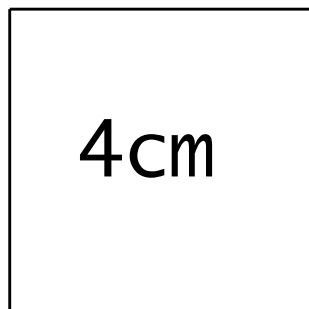


3-5

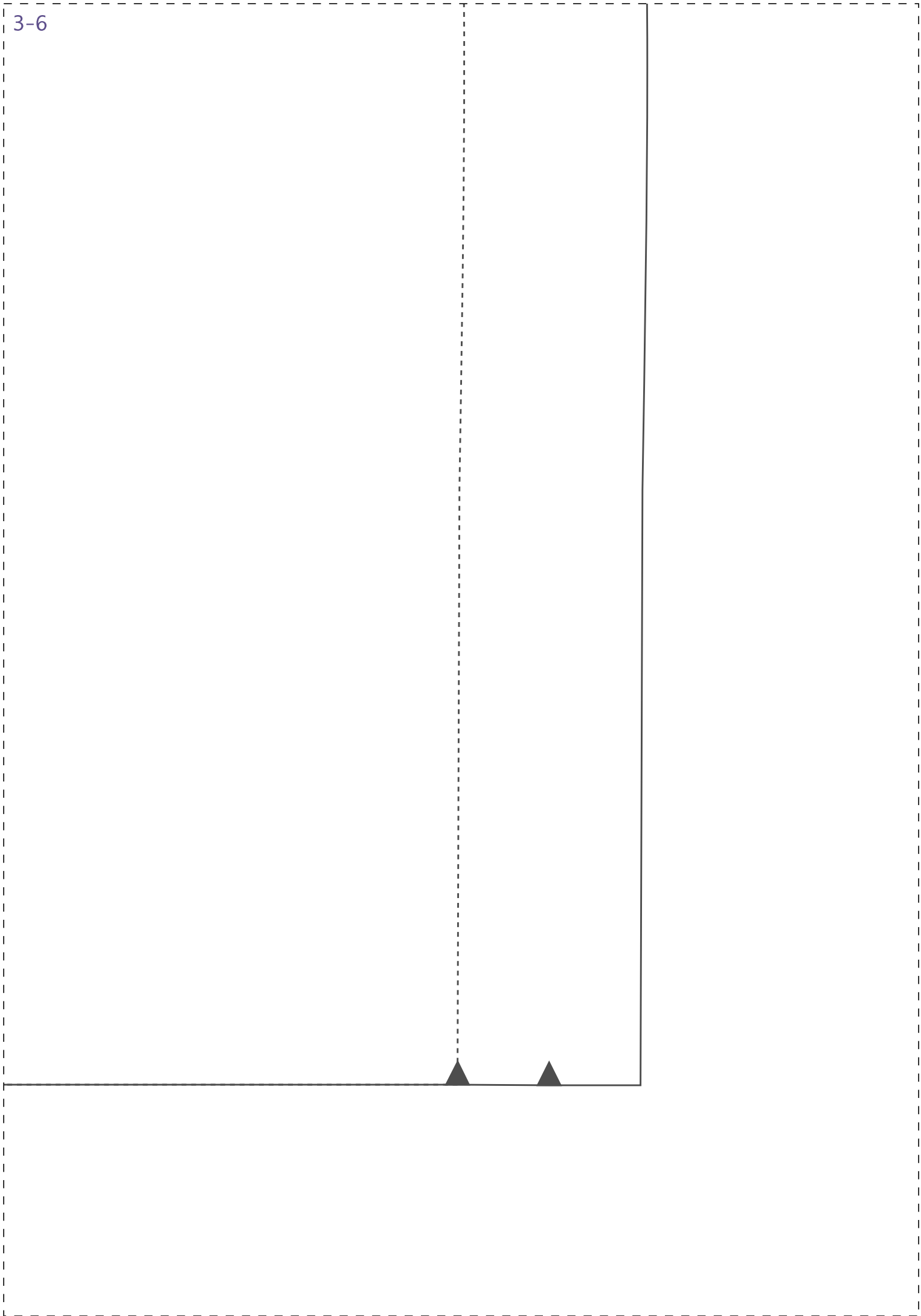


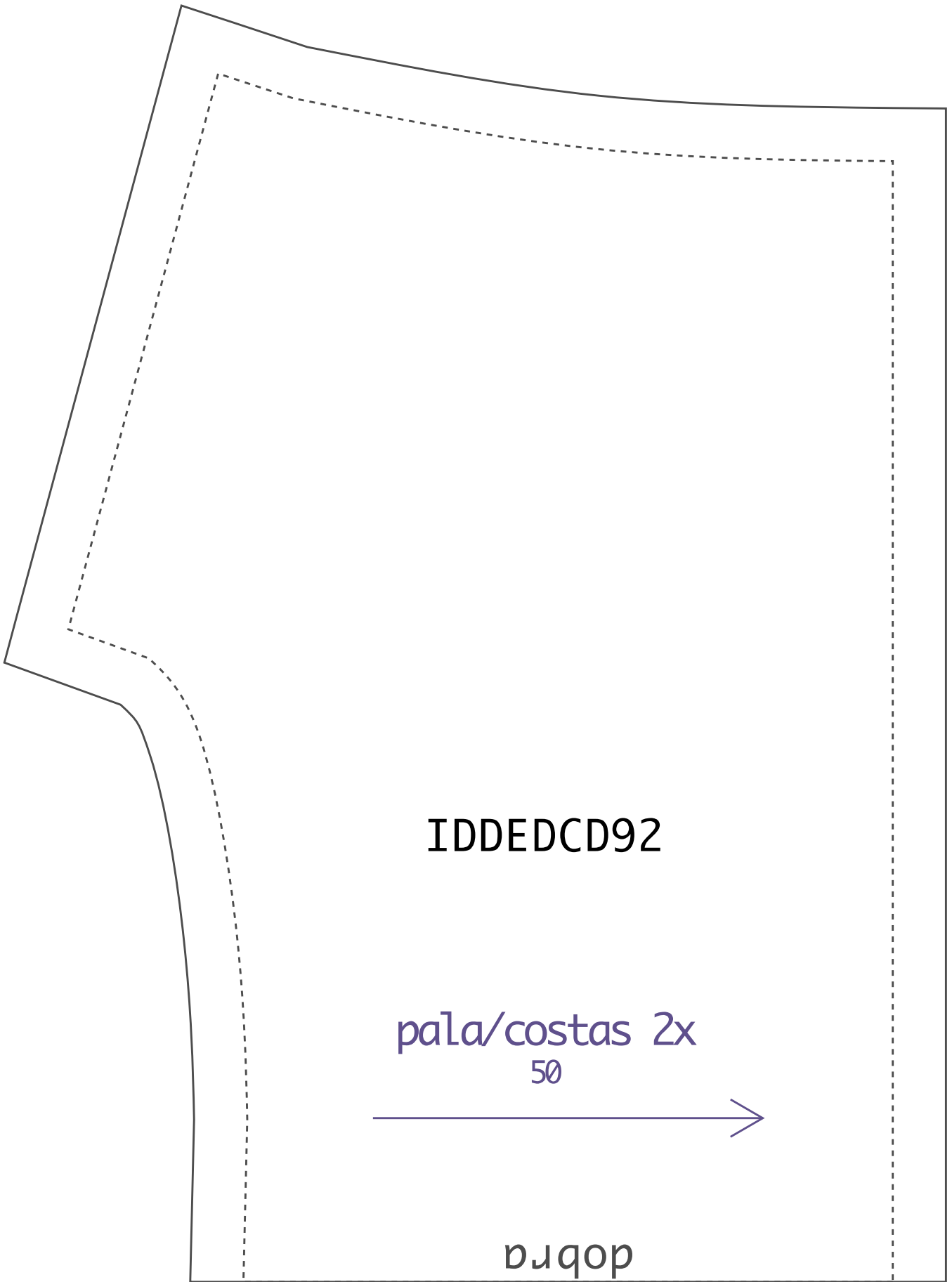


Teste de impressão: ao imprimir seu molde, meça o quadrado que deverá ter a mesma medida informada (4cm), assim você se certificará que ele foi impresso no tamanho correto.



3-6





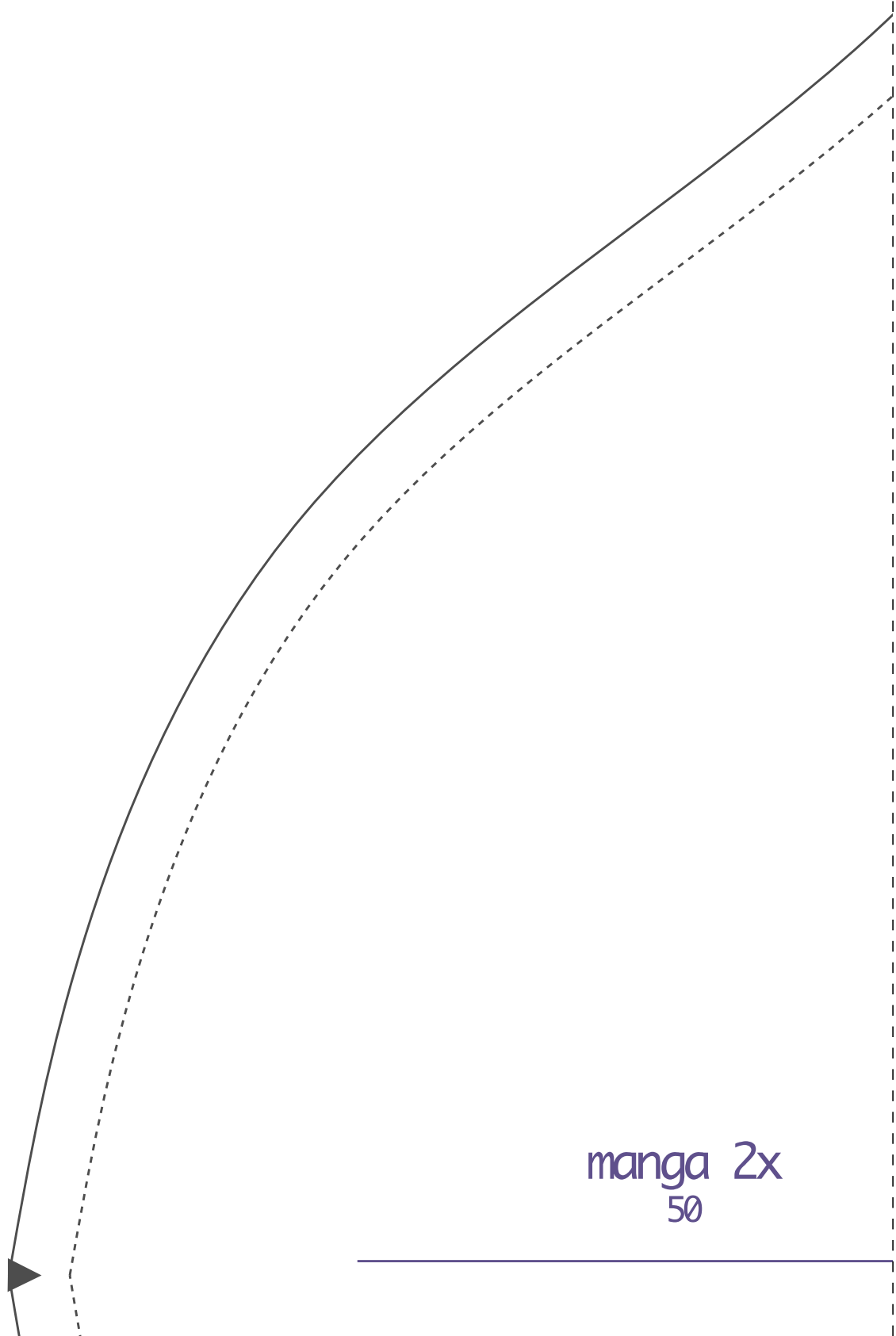
IDDED CD92

pala/costas 2x

50



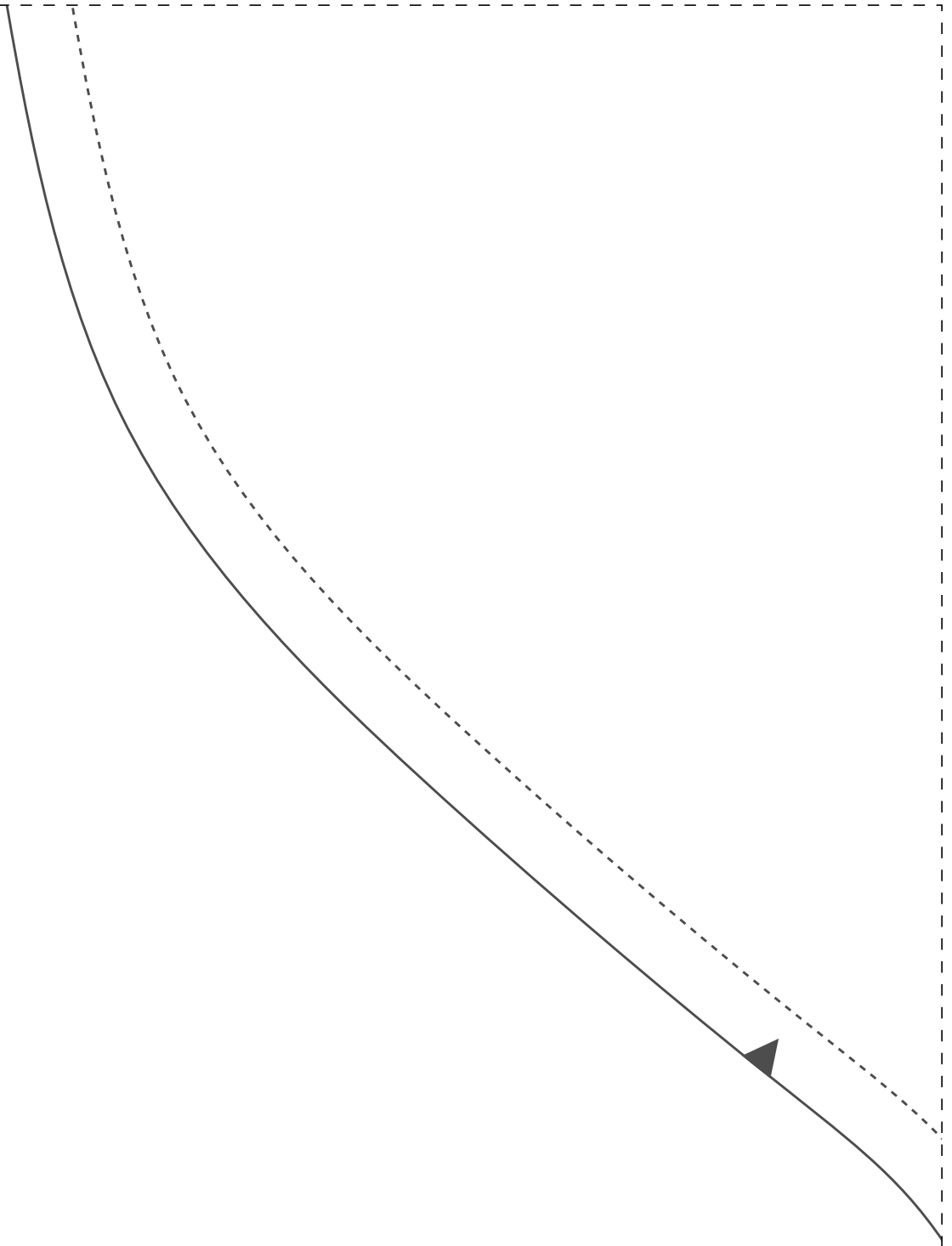
vapor

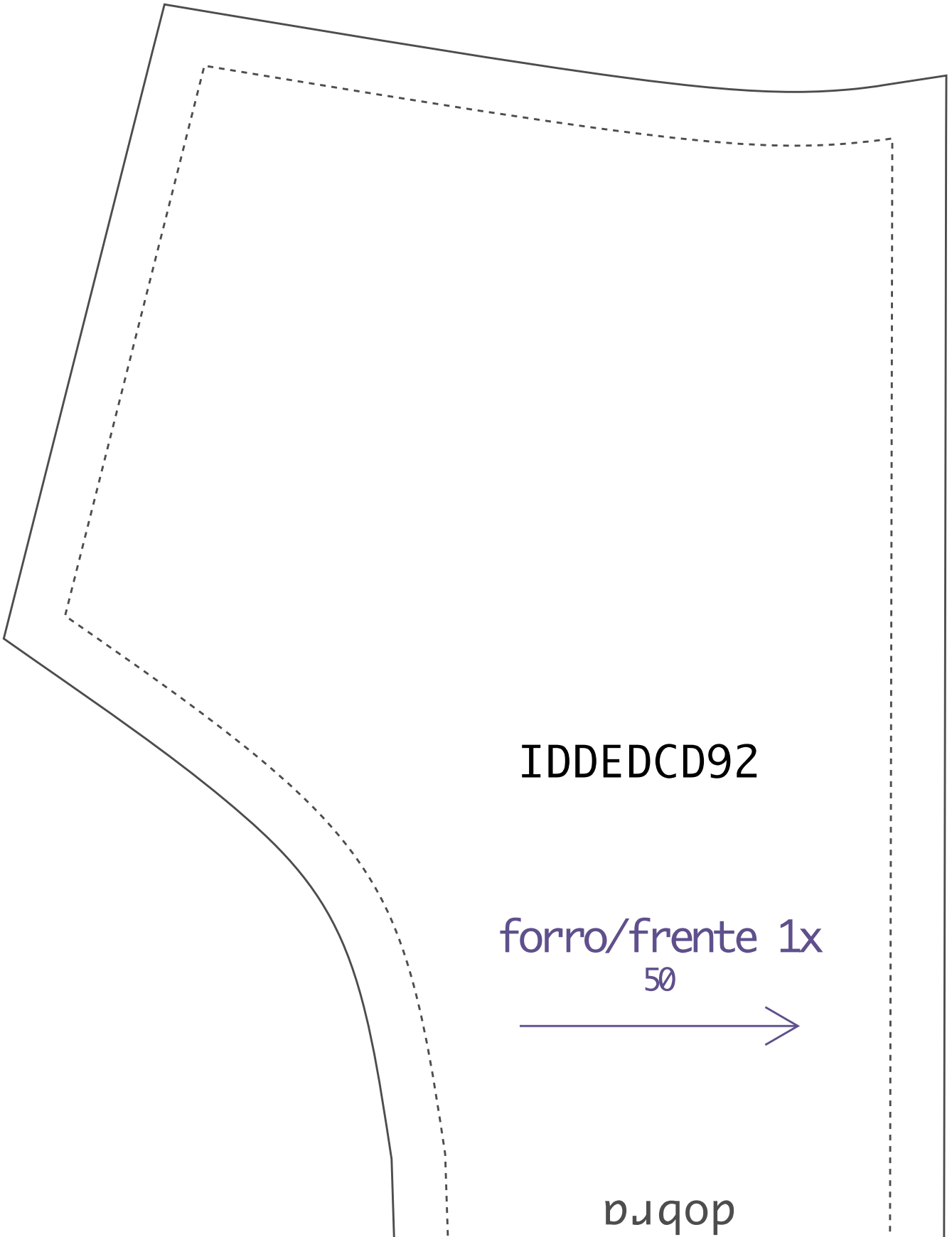


manga 2x
50

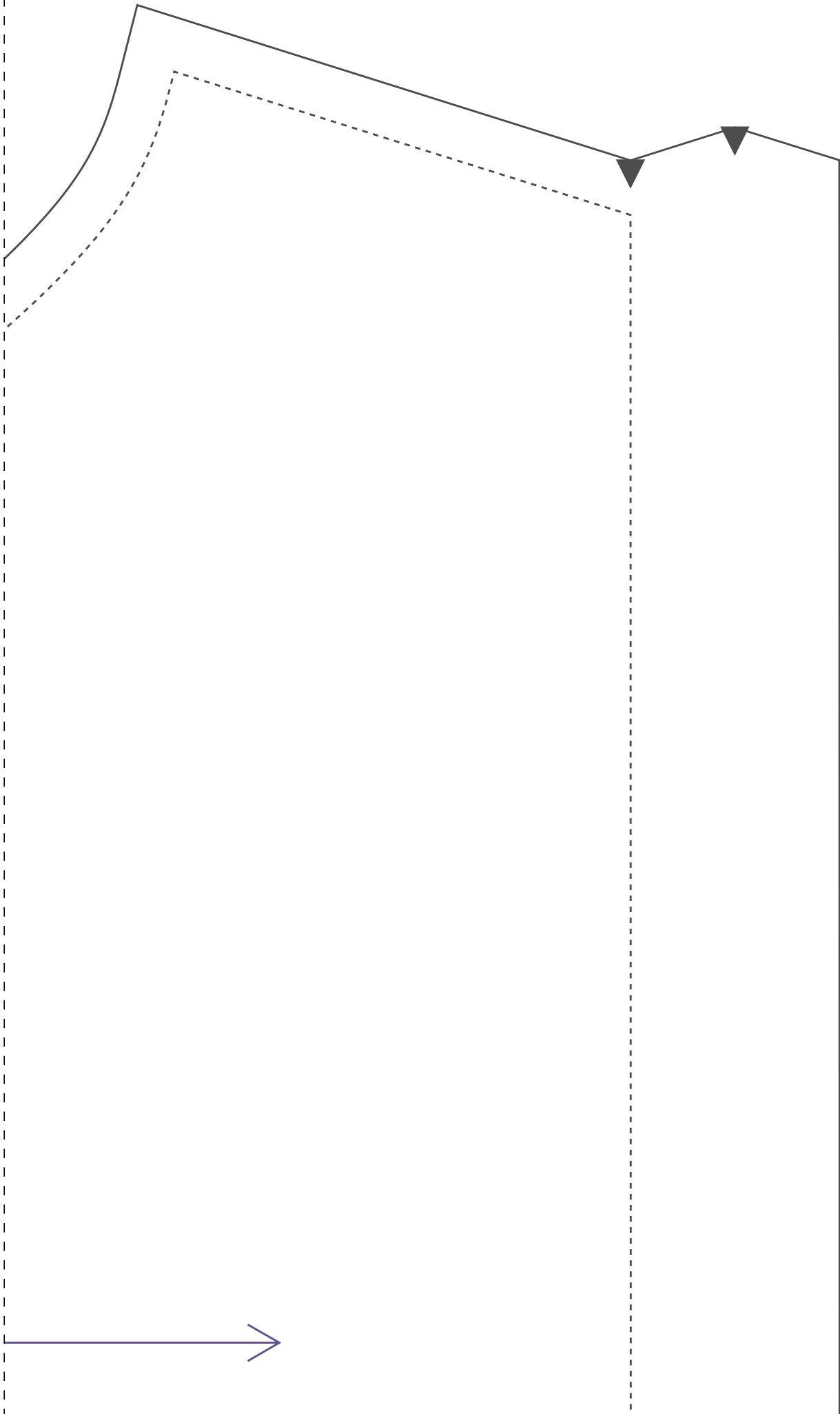


3-7





2-8



IDDED CD92

