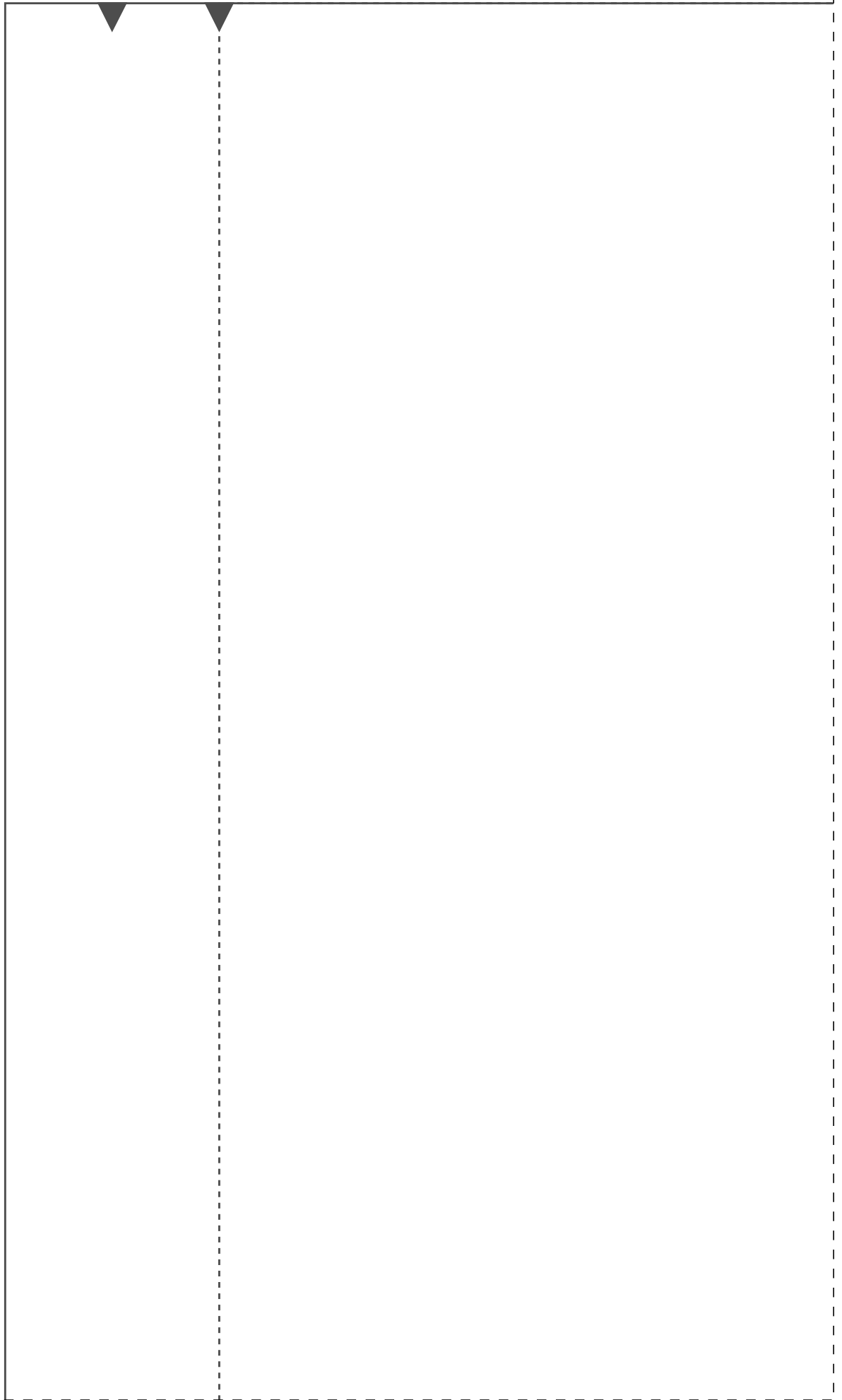
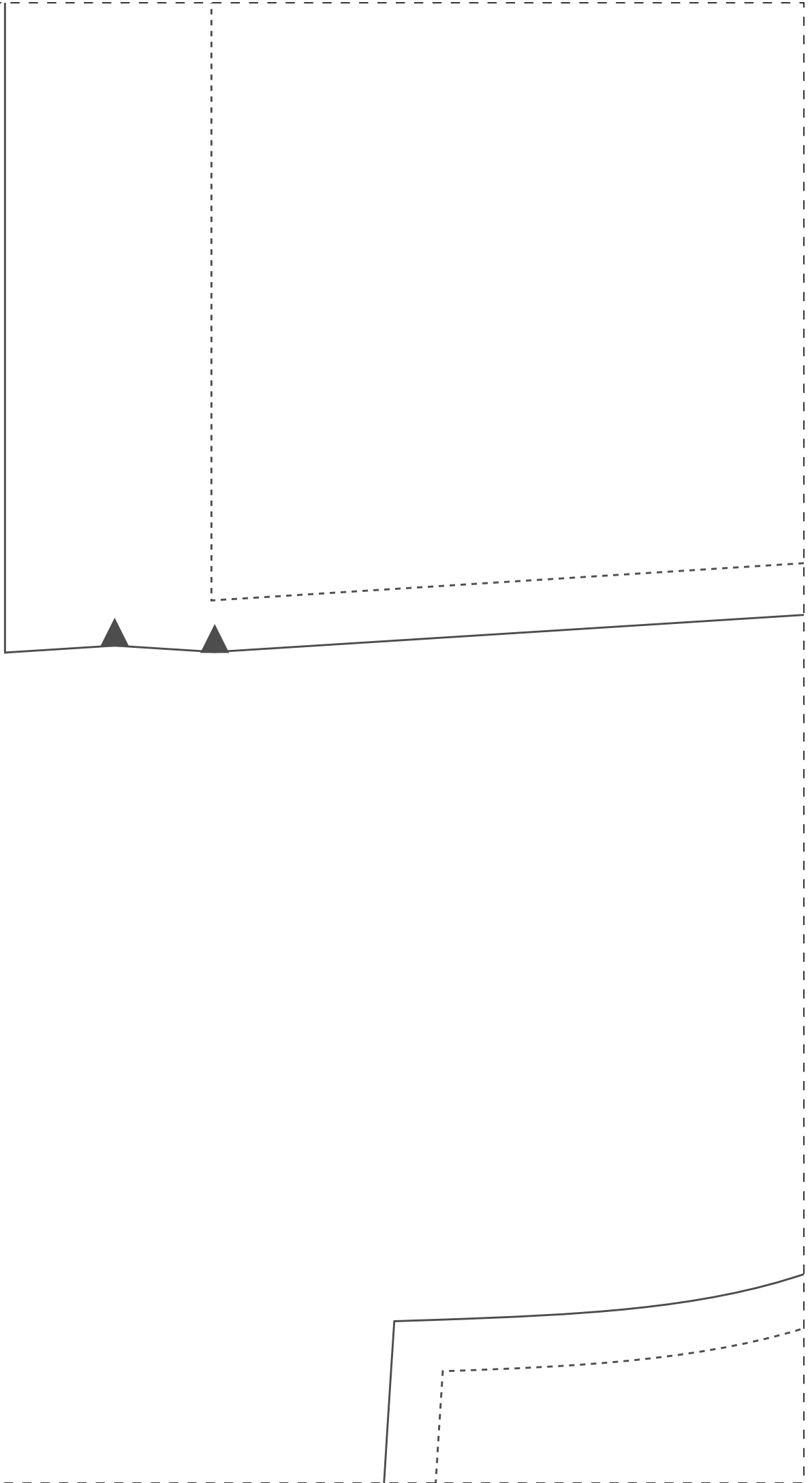


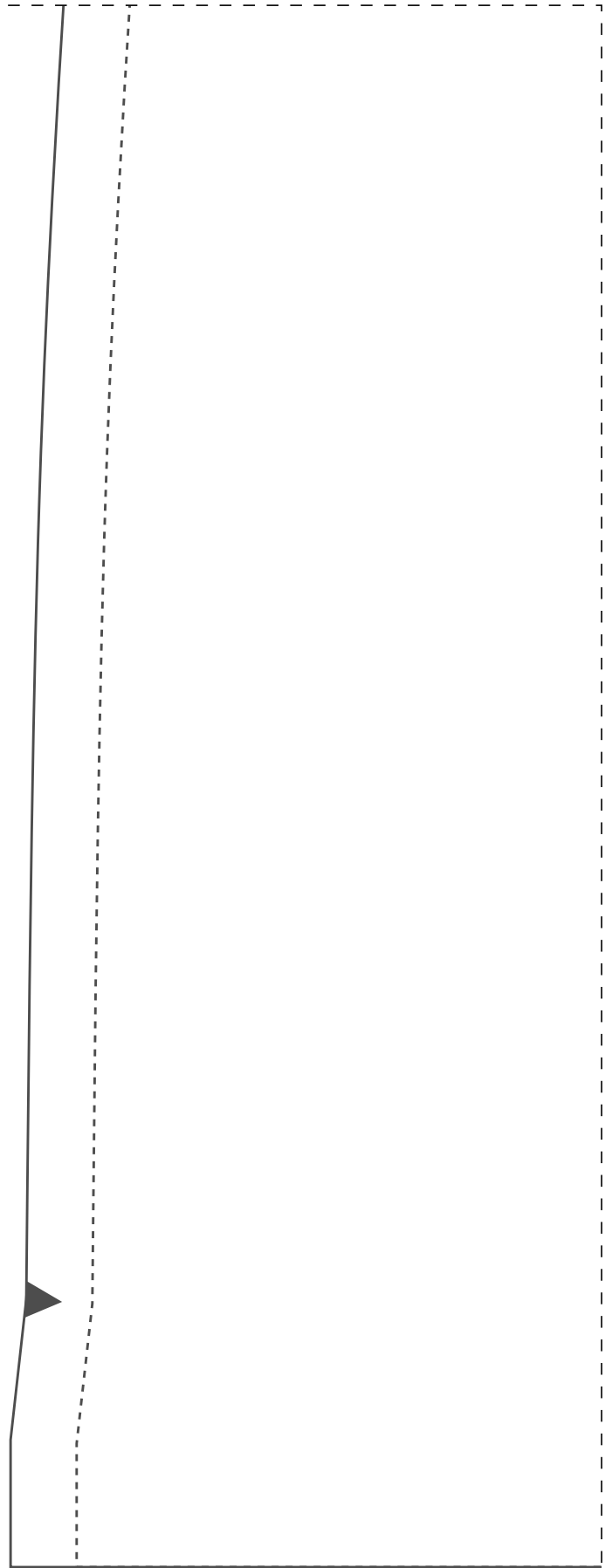
1-1



2-1

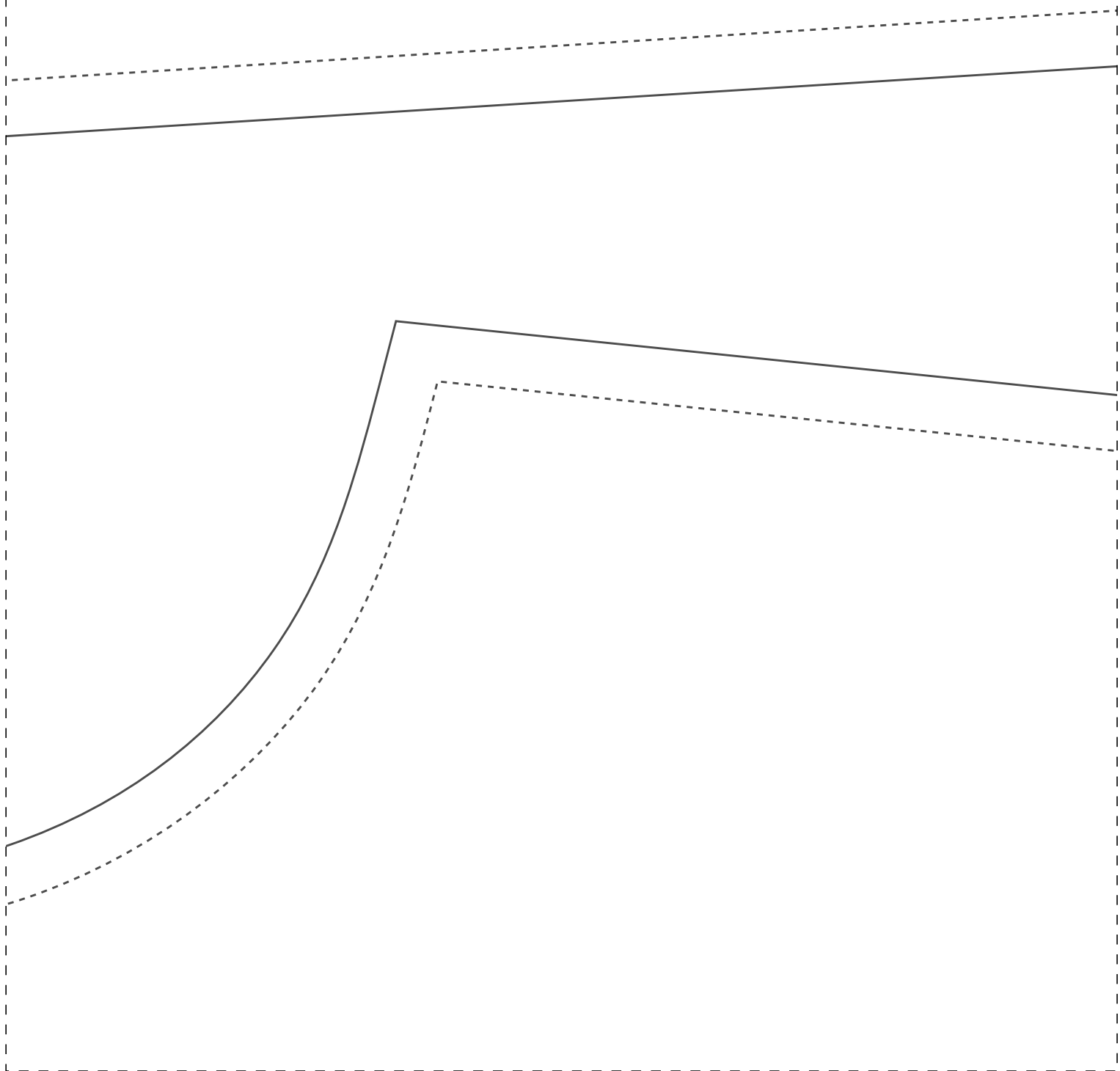


3-1



1-2



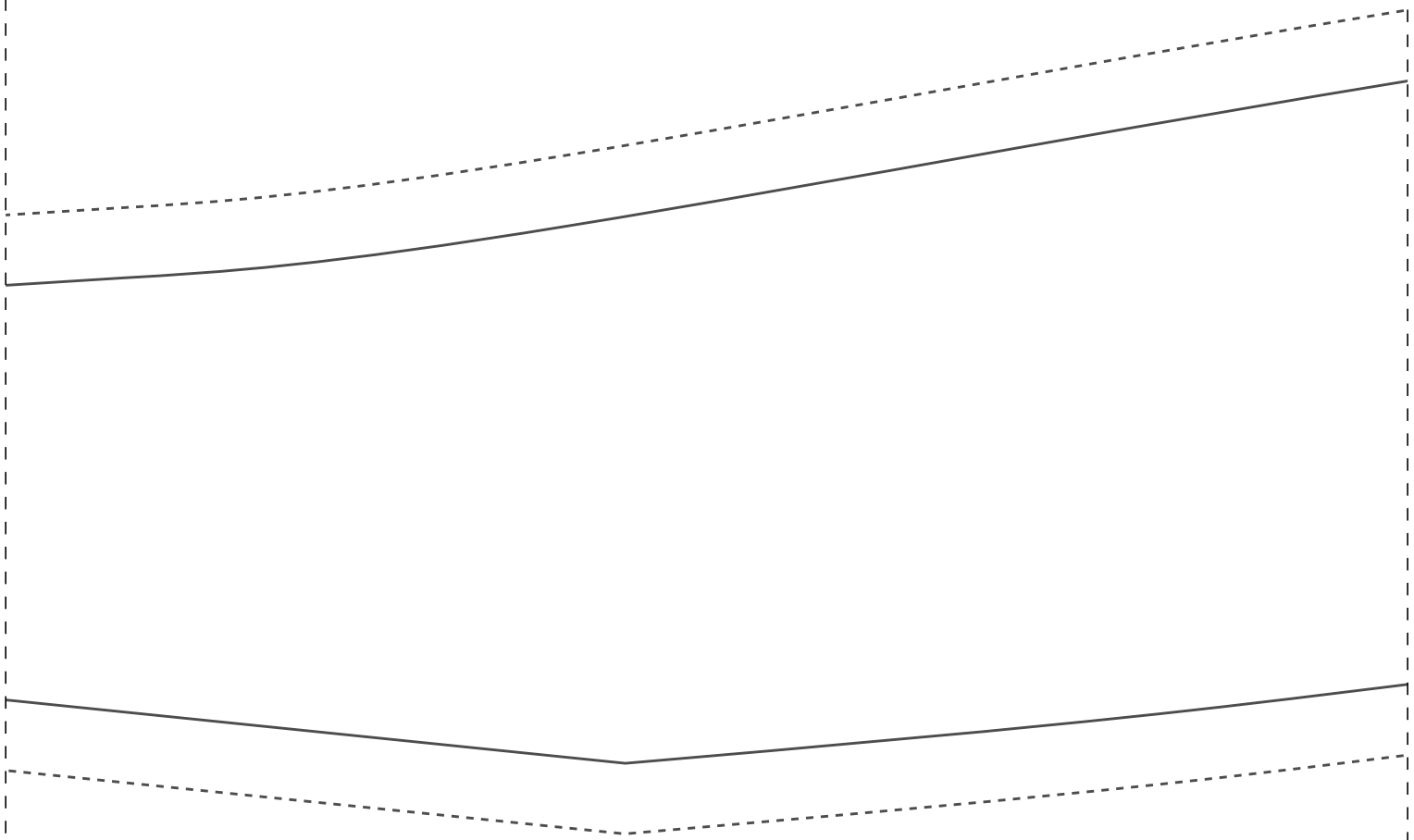




1-3

dob

frente 1x
52



FICHA TÉCNICA:

- Tecido plano 1,4m largura
- Viscose, viscolinho, linho, tencel, tricoline ou similares
- Pala dupla
- 2m para os tamanhos 36 ao 44
- 3,2m para os tamanhos 46 A0 54

IDDED92

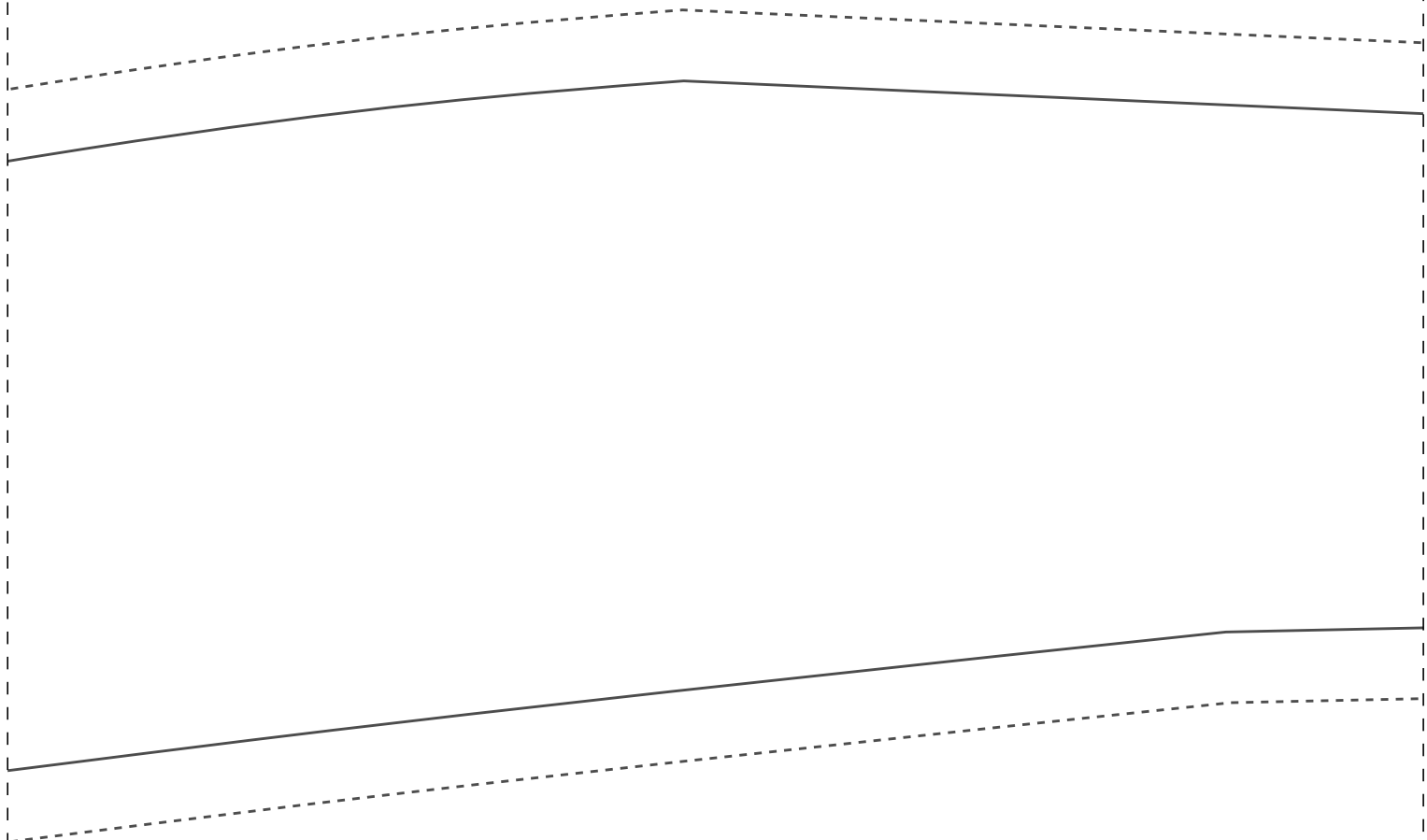
costas 1x
52

ra

IDDEDCCD92

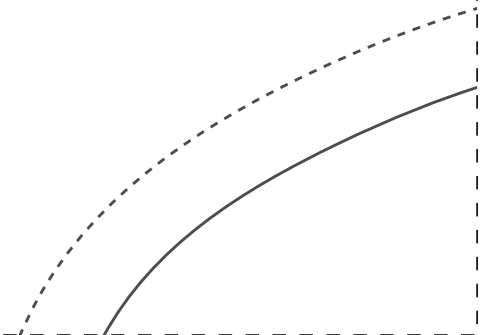
PROIBIDA REVENDA

Instituto Diana Demarchi
Escola de Costurar
Vestido Pala e Prega
Costas para iniciantes

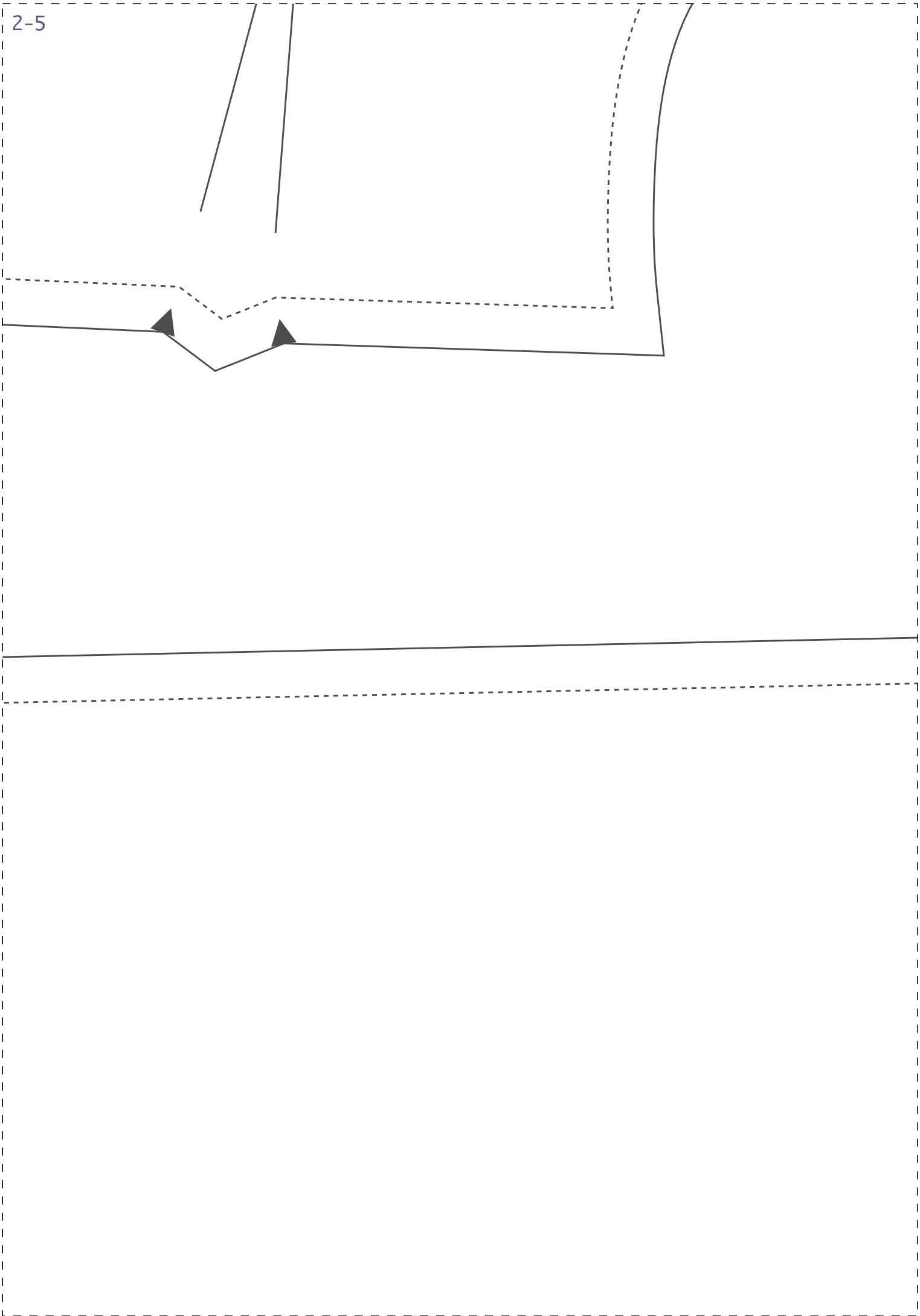


3-4

արգօր

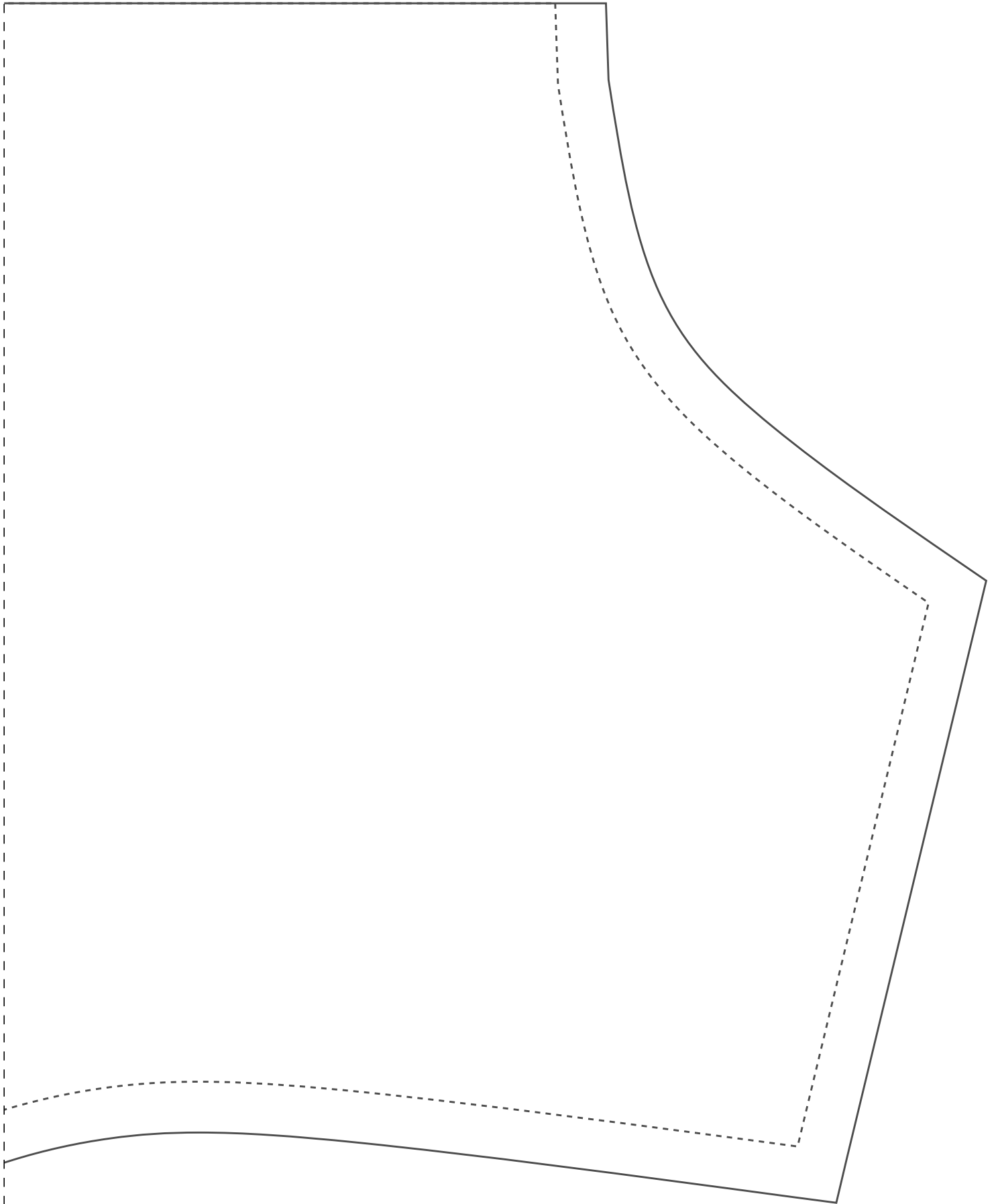


2-5

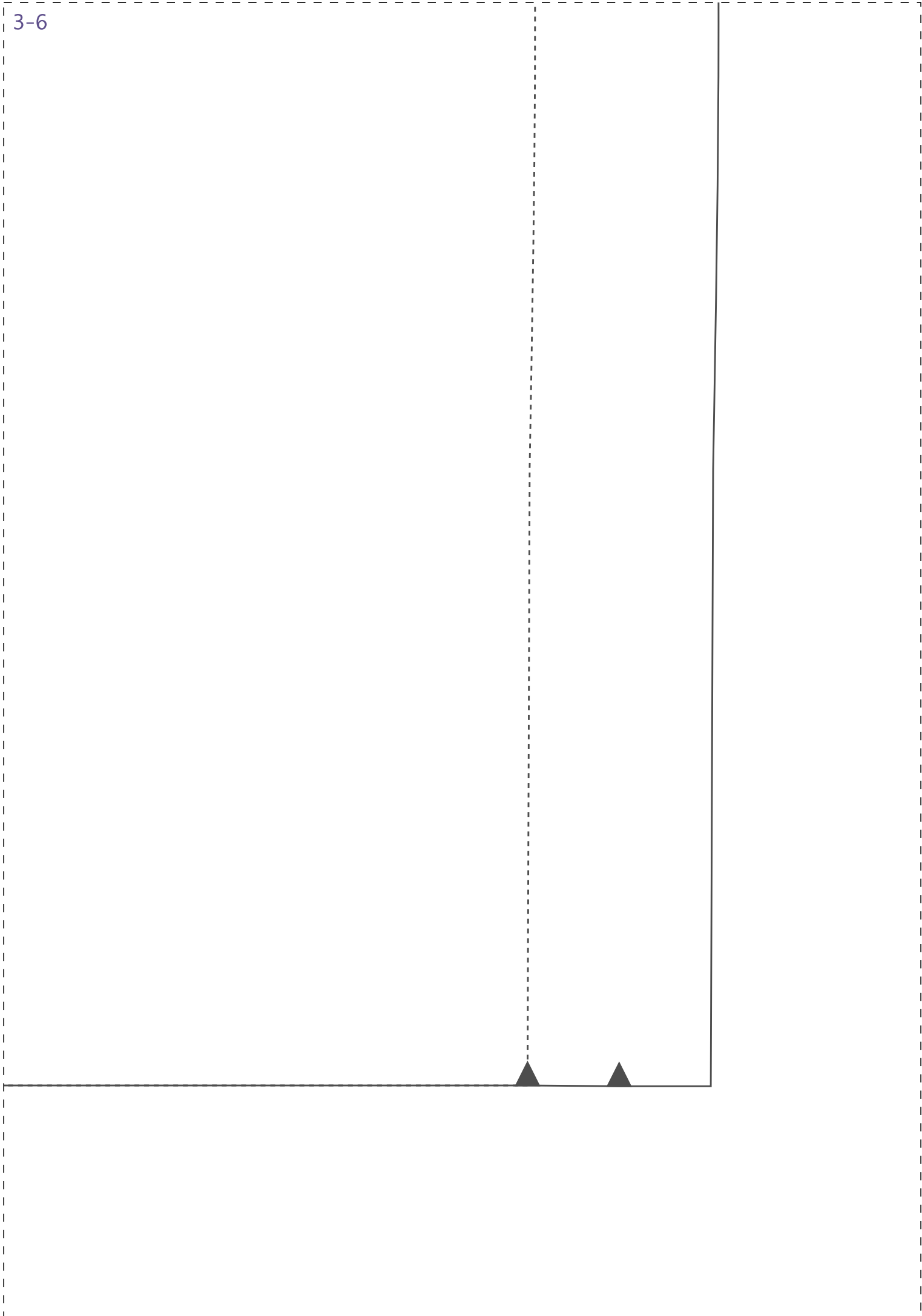


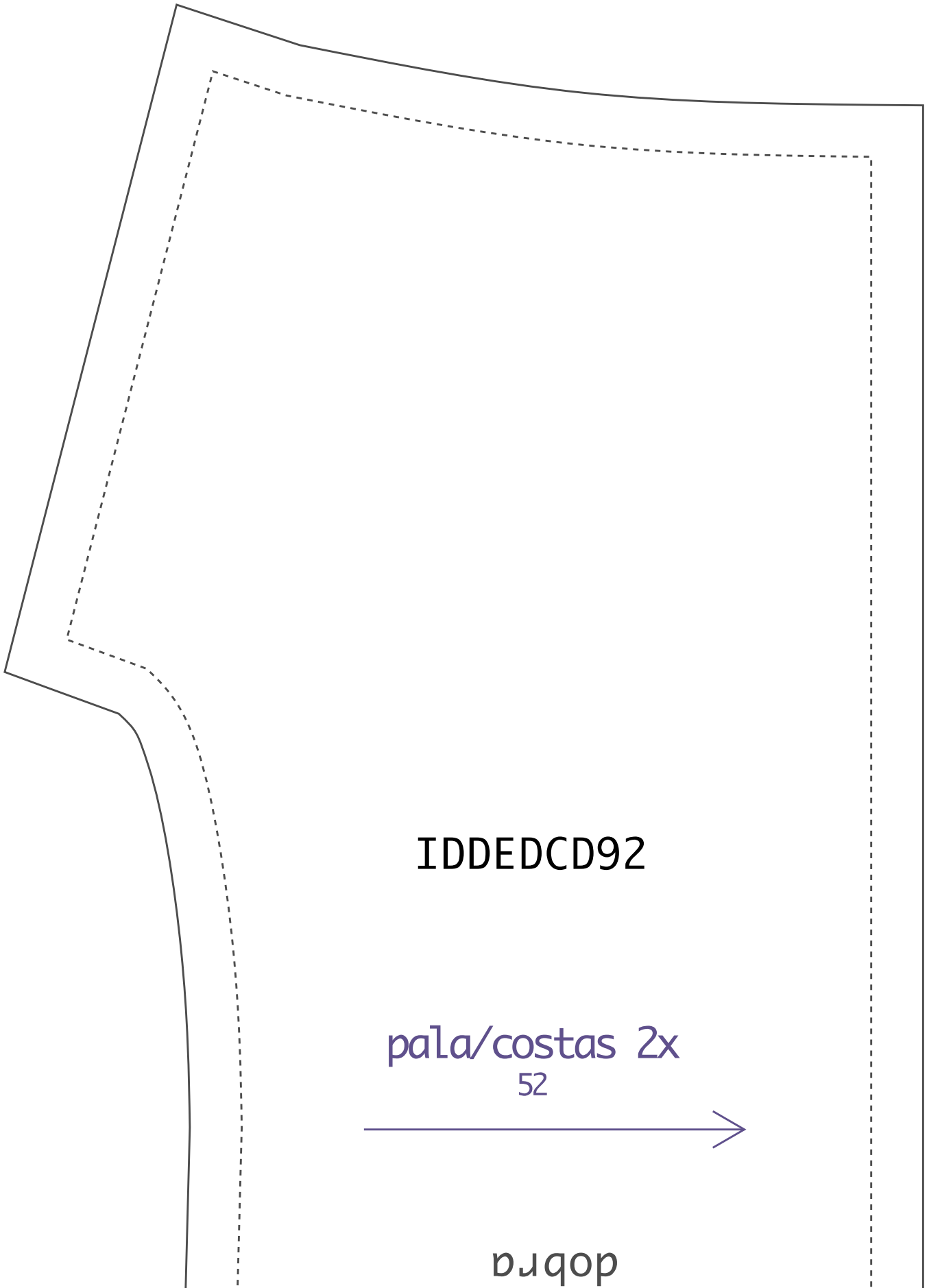
3-5





3-6





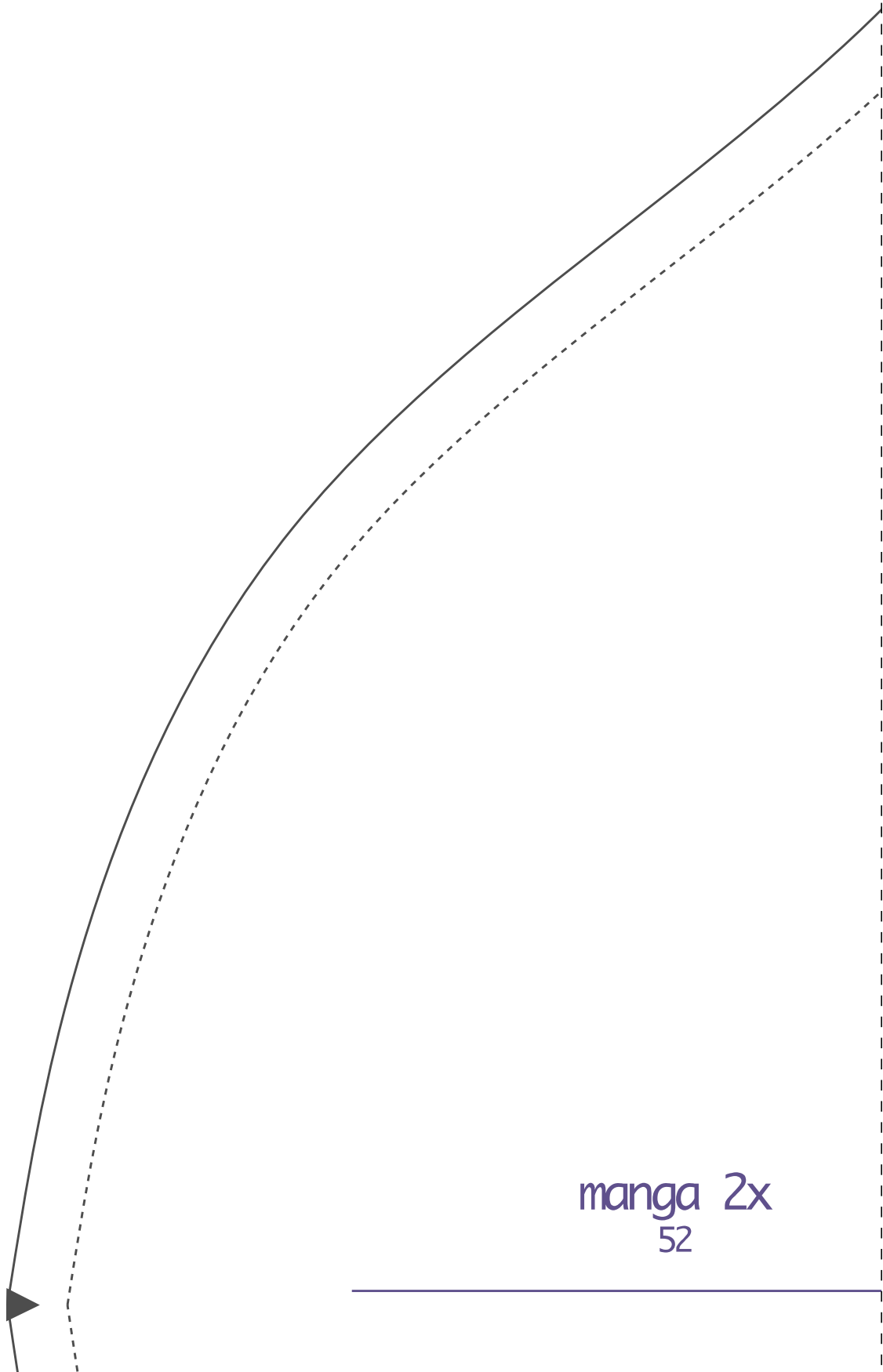
IDDEDCD92

pala/costas 2x

52



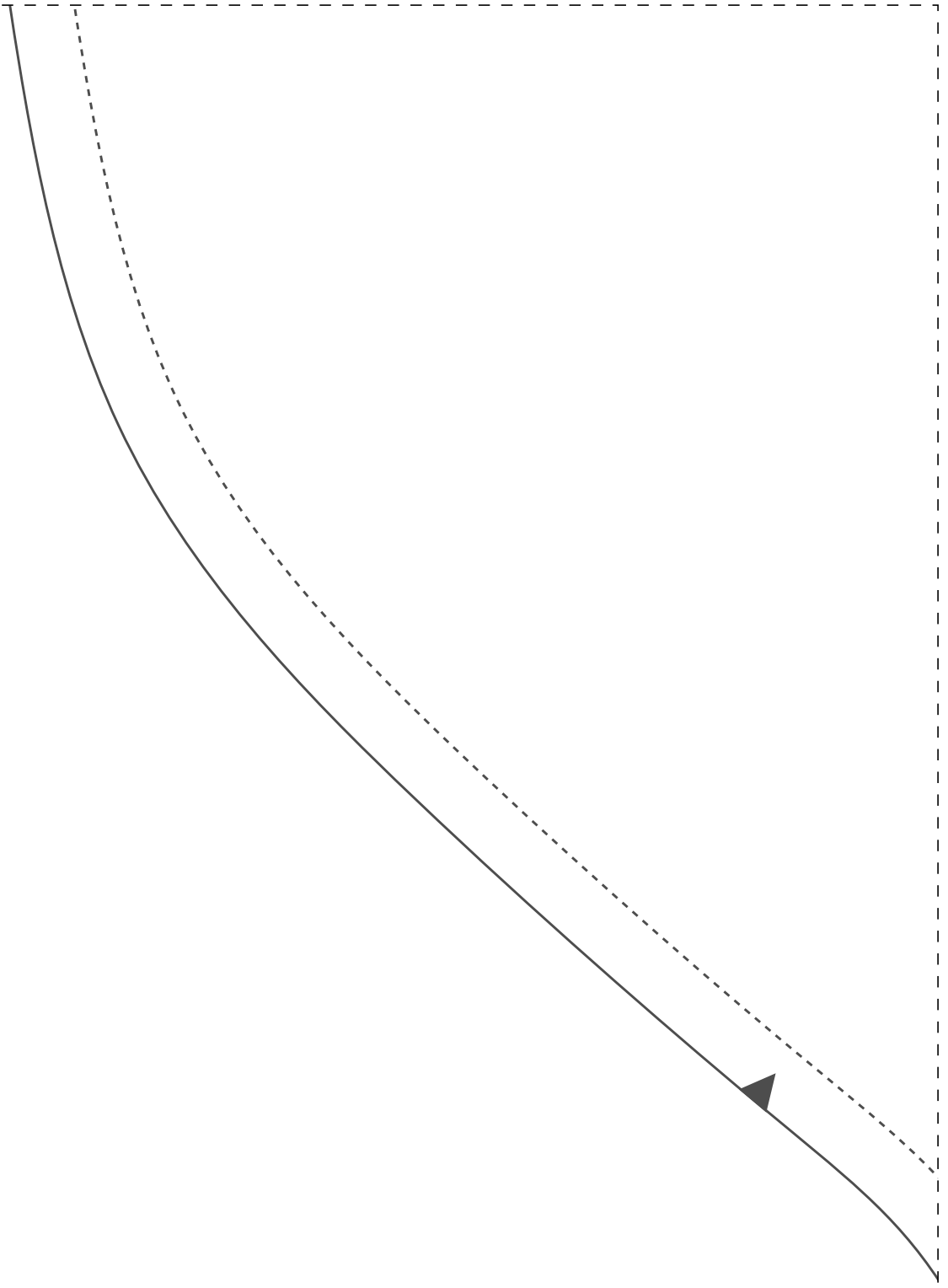
p1qop

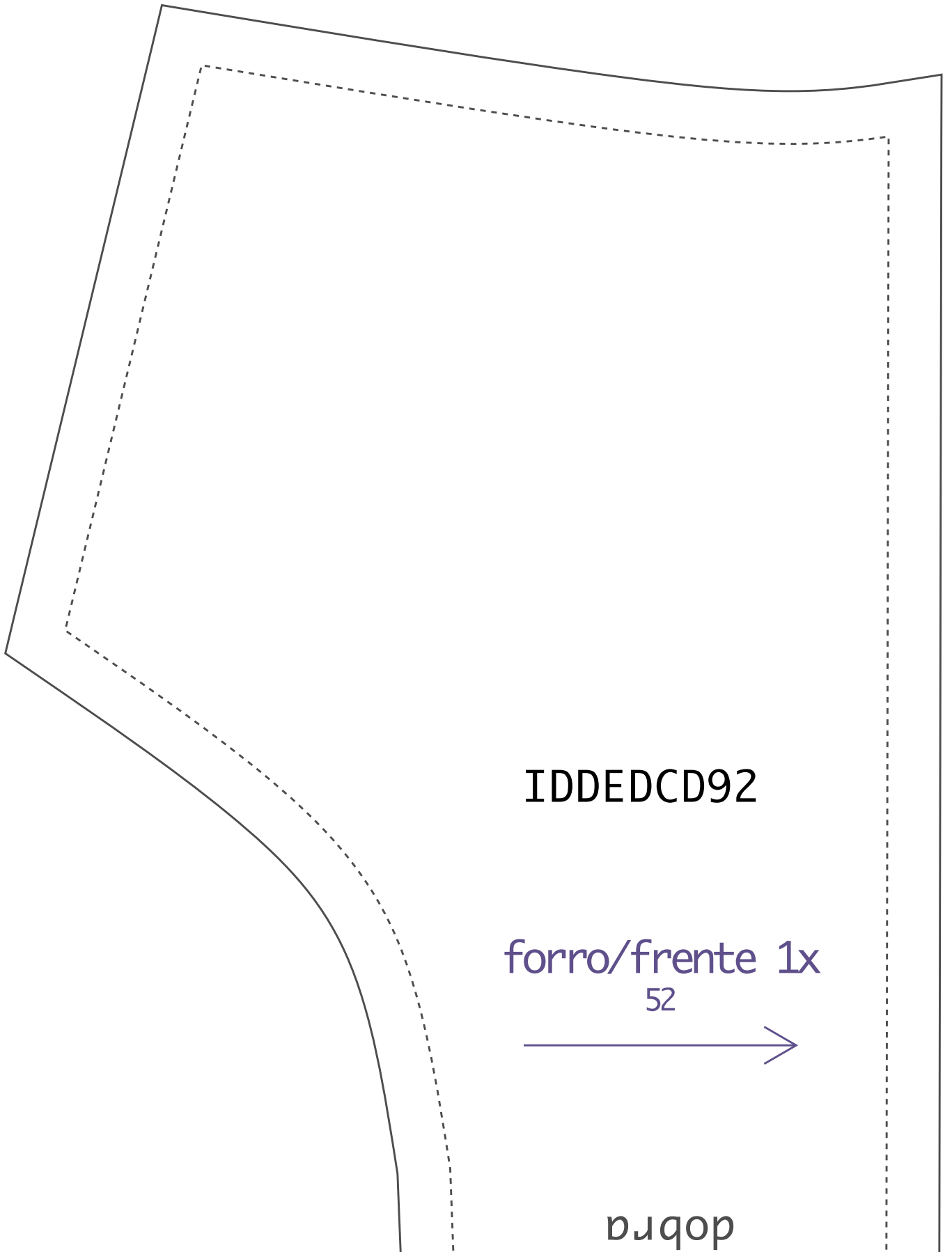


manga 2x
52



3-7





IDDED CD92

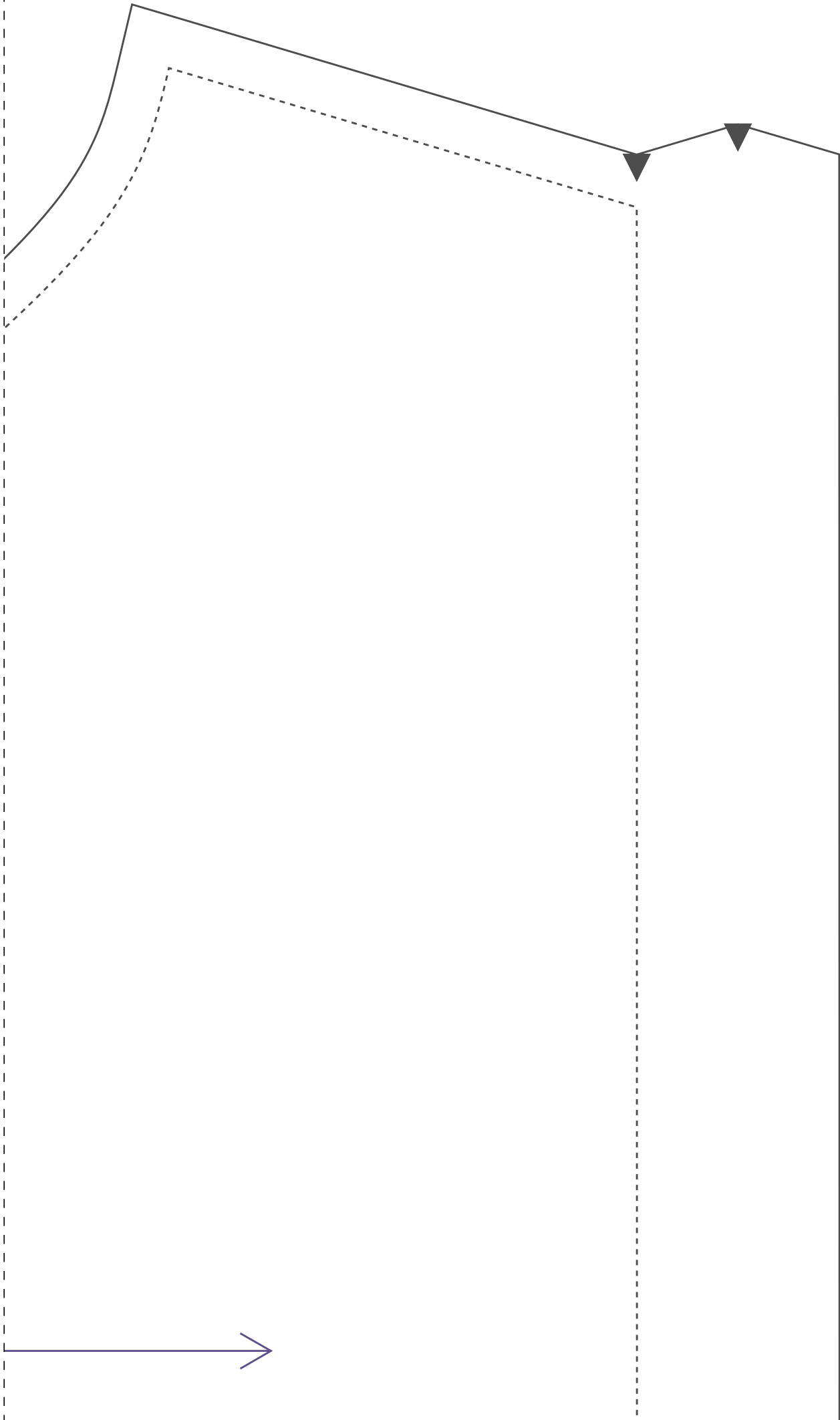
forro/frente 1x

52



dobra

2-8



IDDED CD92

