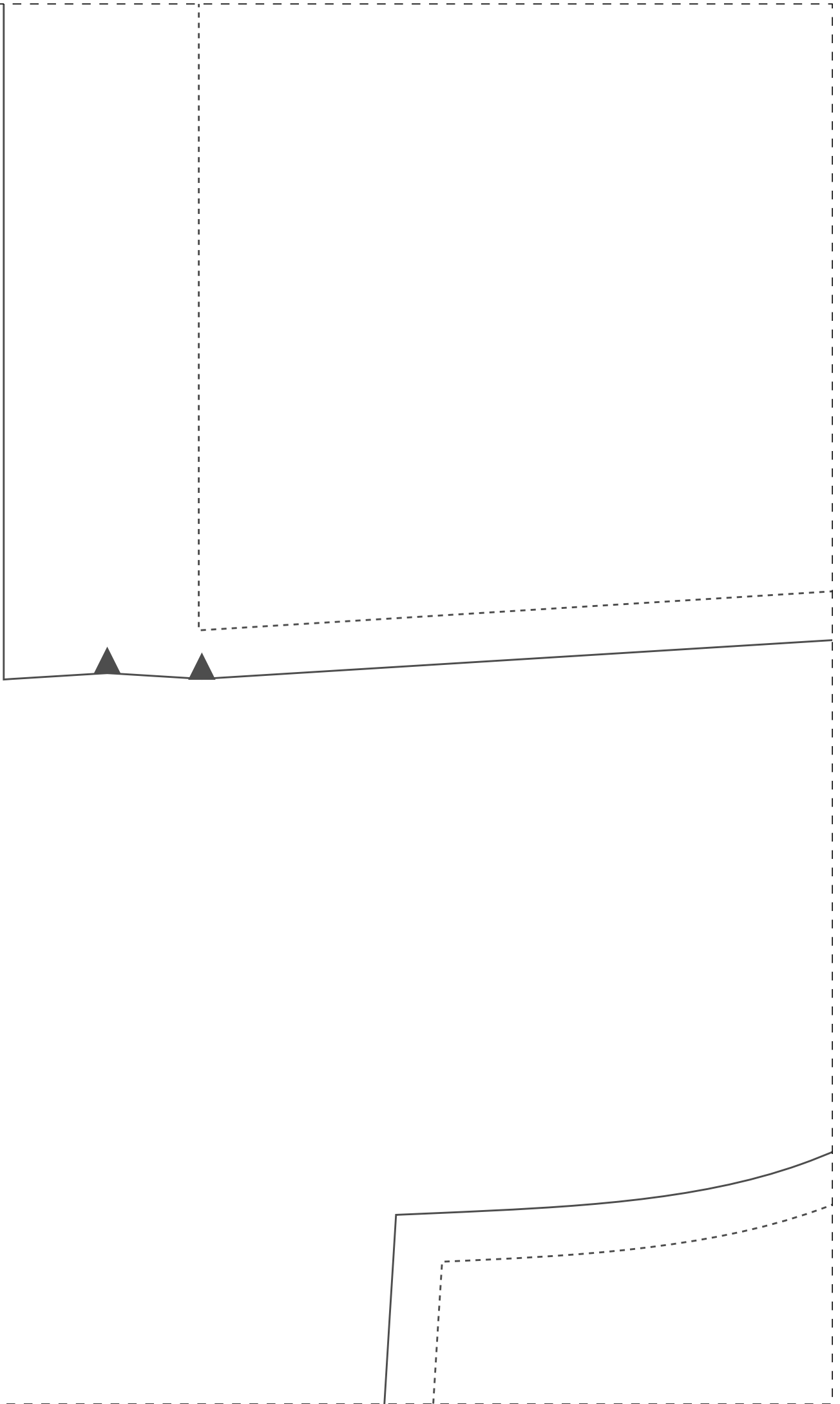


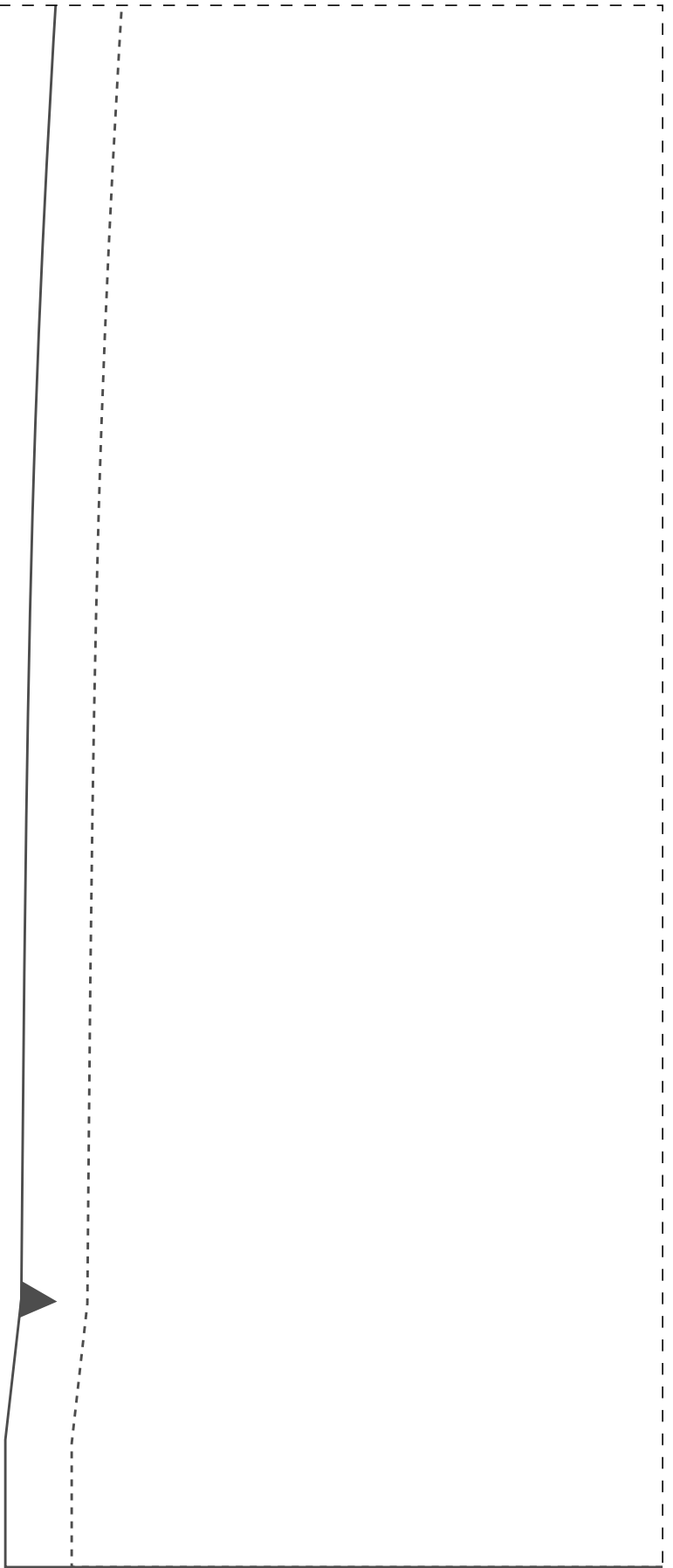
1-1



2-1



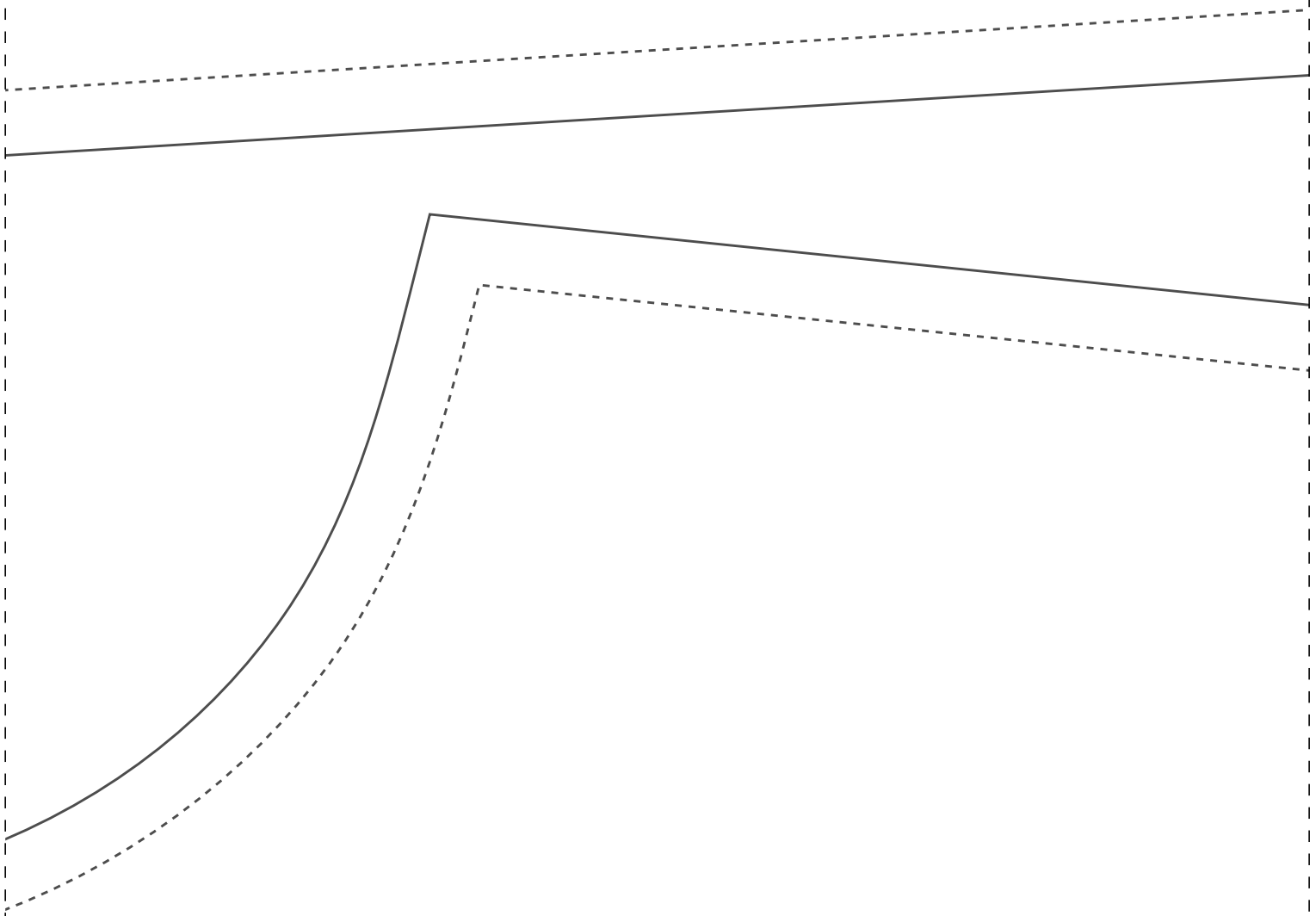
3-1



1-2



2-2

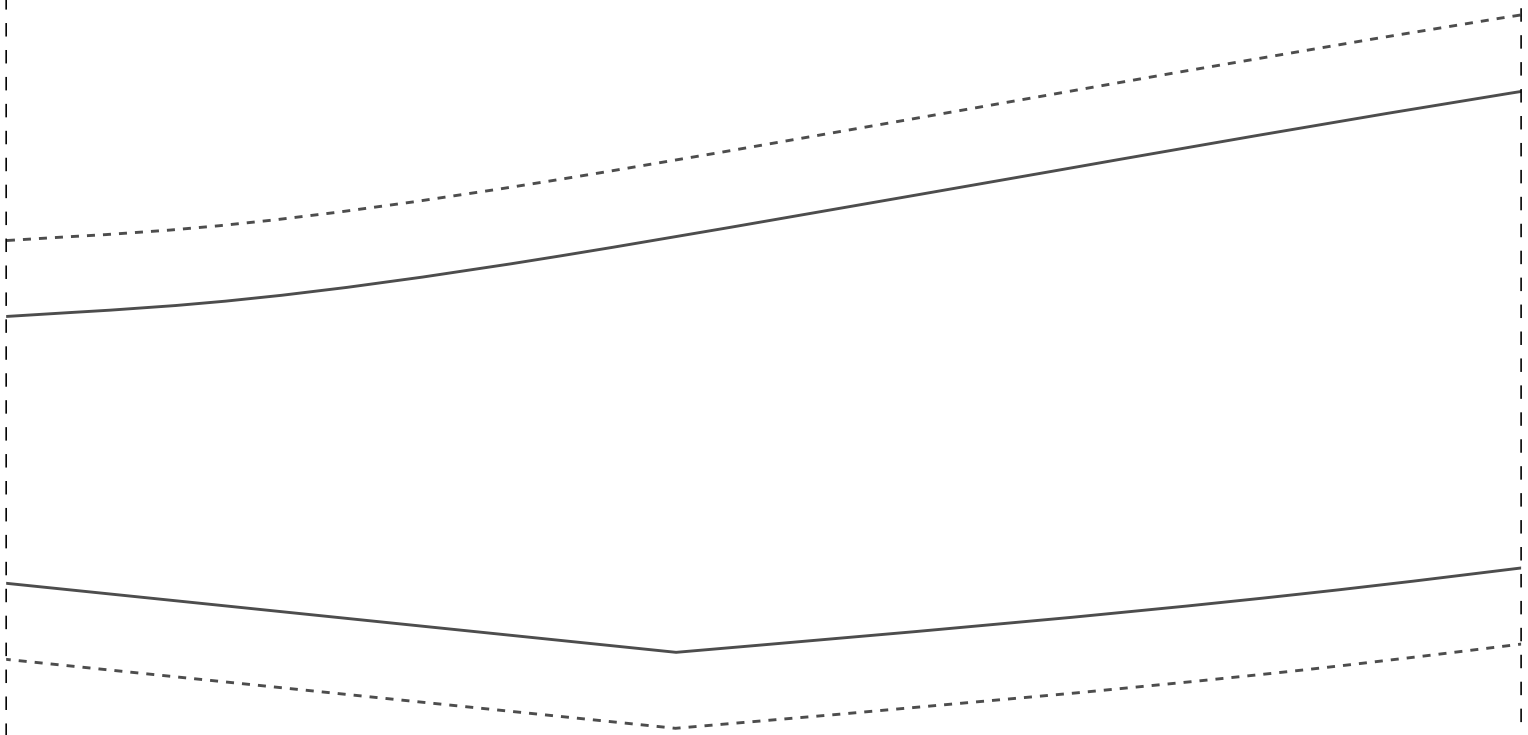




1-3

dobr

frente 1x  
54





**FICHA TÉCNICA:**

- Tecido plano 1,4m largura
- Viscose, viscolinho, linho, tencel, tricoline ou similares
- Pala dupla
- 2m para os tamanhos 36 ao 44
- 3,2m para os tamanhos 46 A0 54

IDDED92

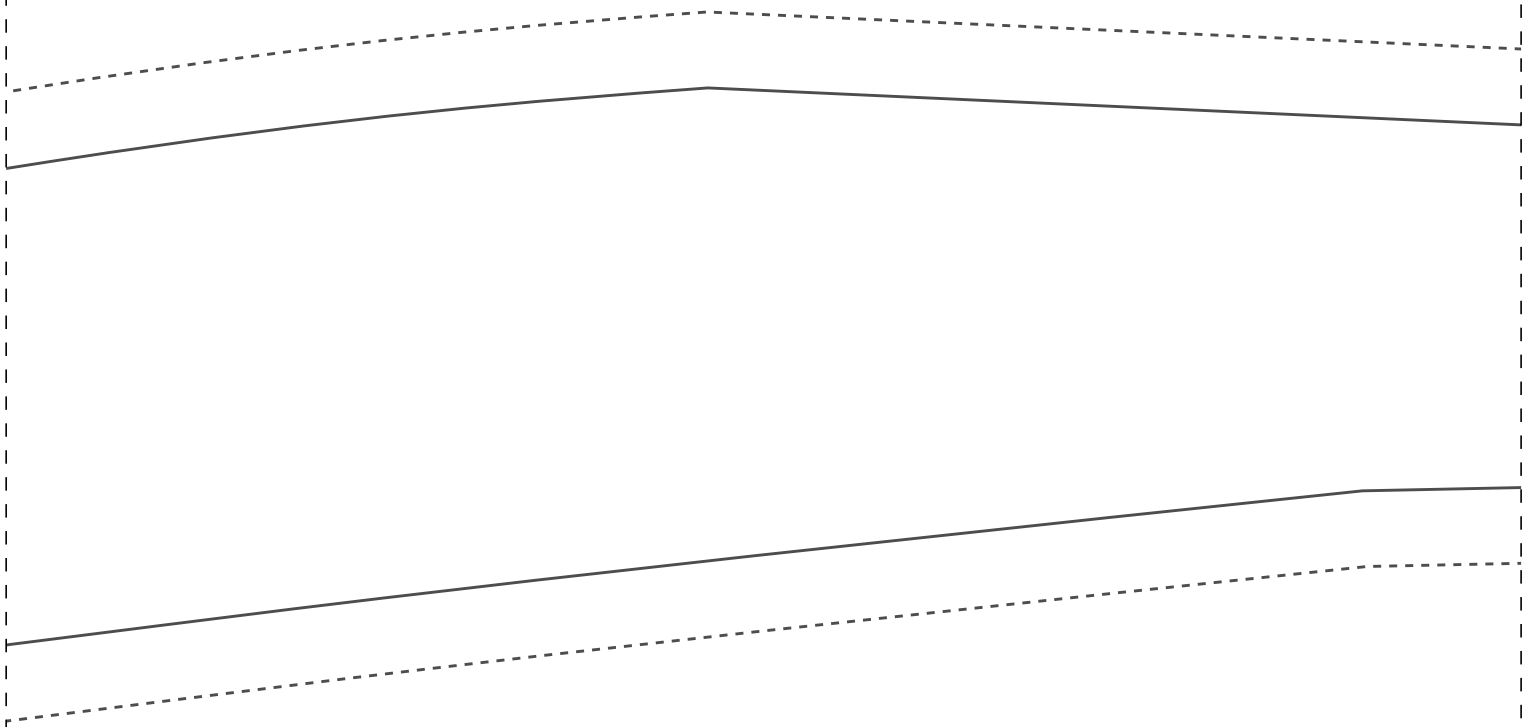
costas 1x  
54

a

IDDEDCCD92

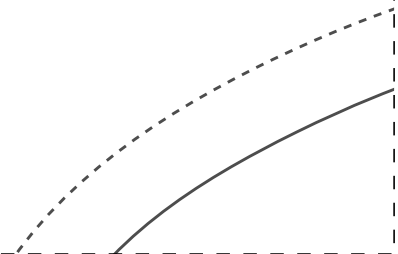
PROIBIDA REVENDA

Instituto Diana Demarchi  
Escola de Costurar  
Vestido Pala e Prega  
Costas para iniciantes

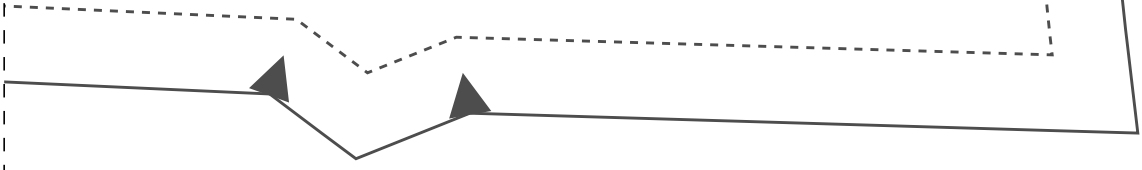
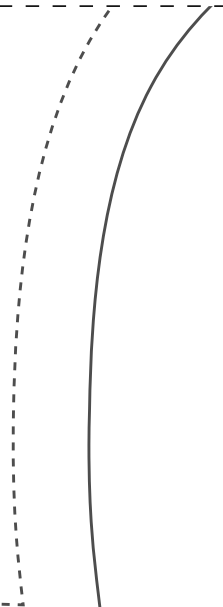
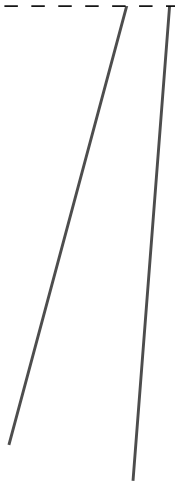
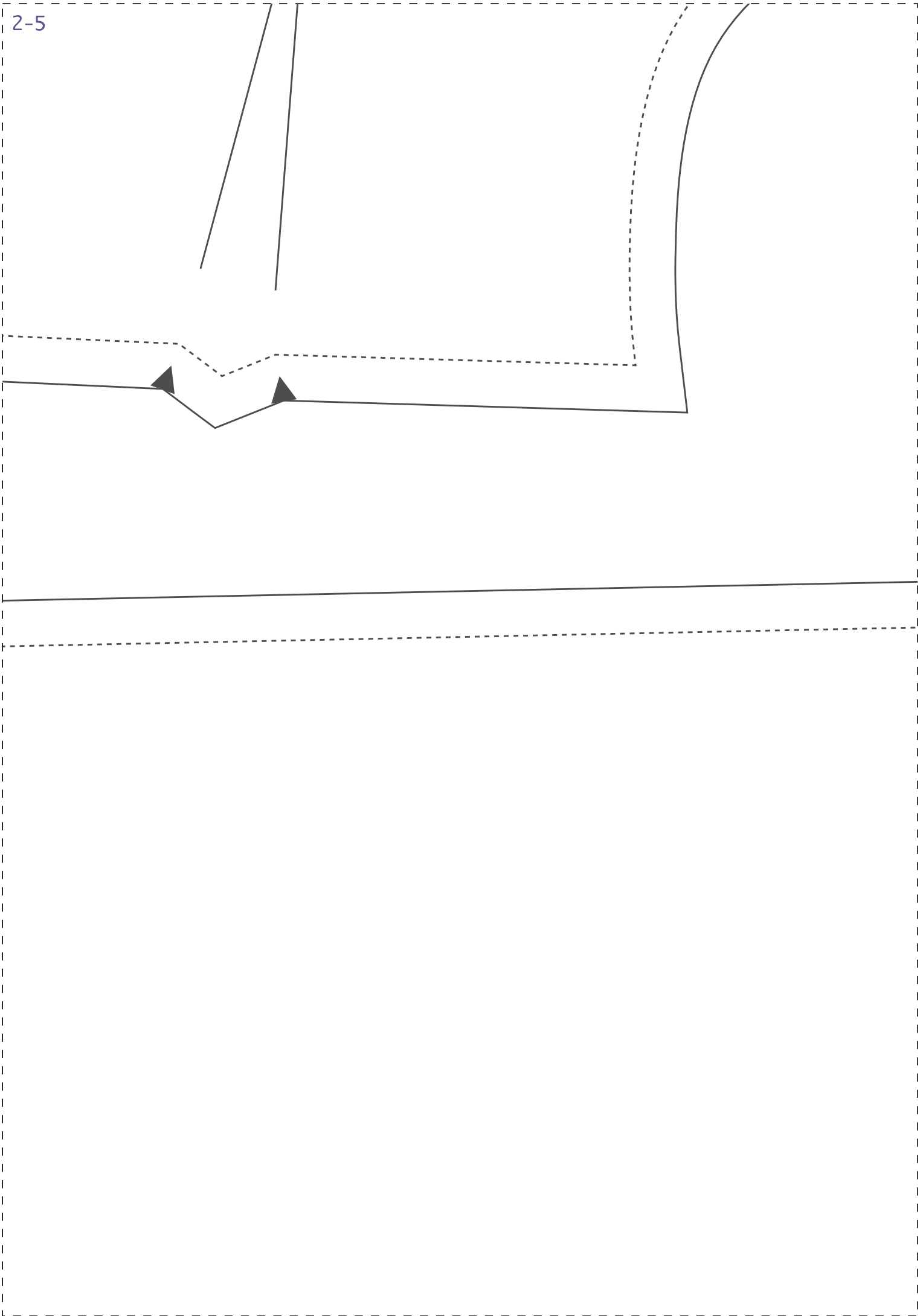


3-4

добр

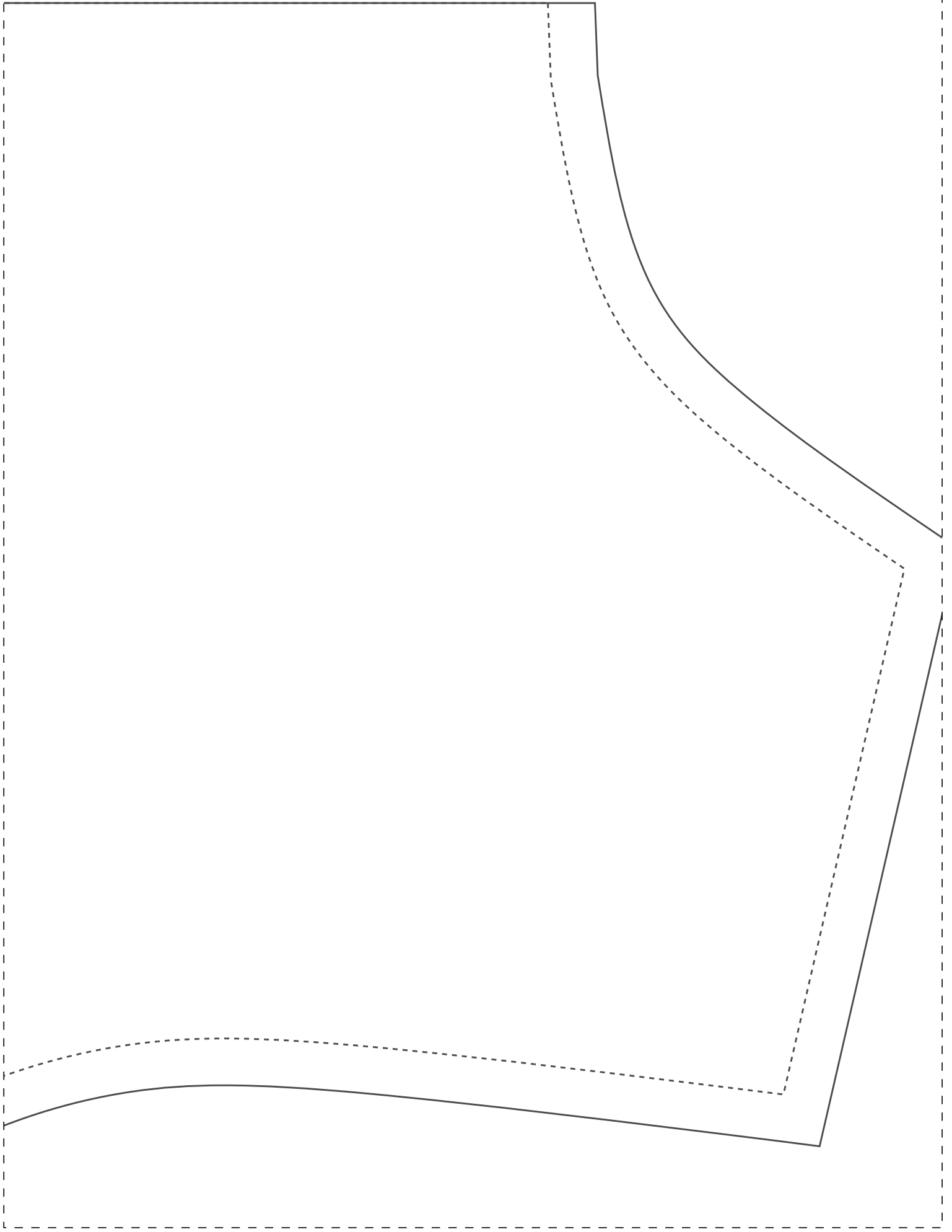


2-5



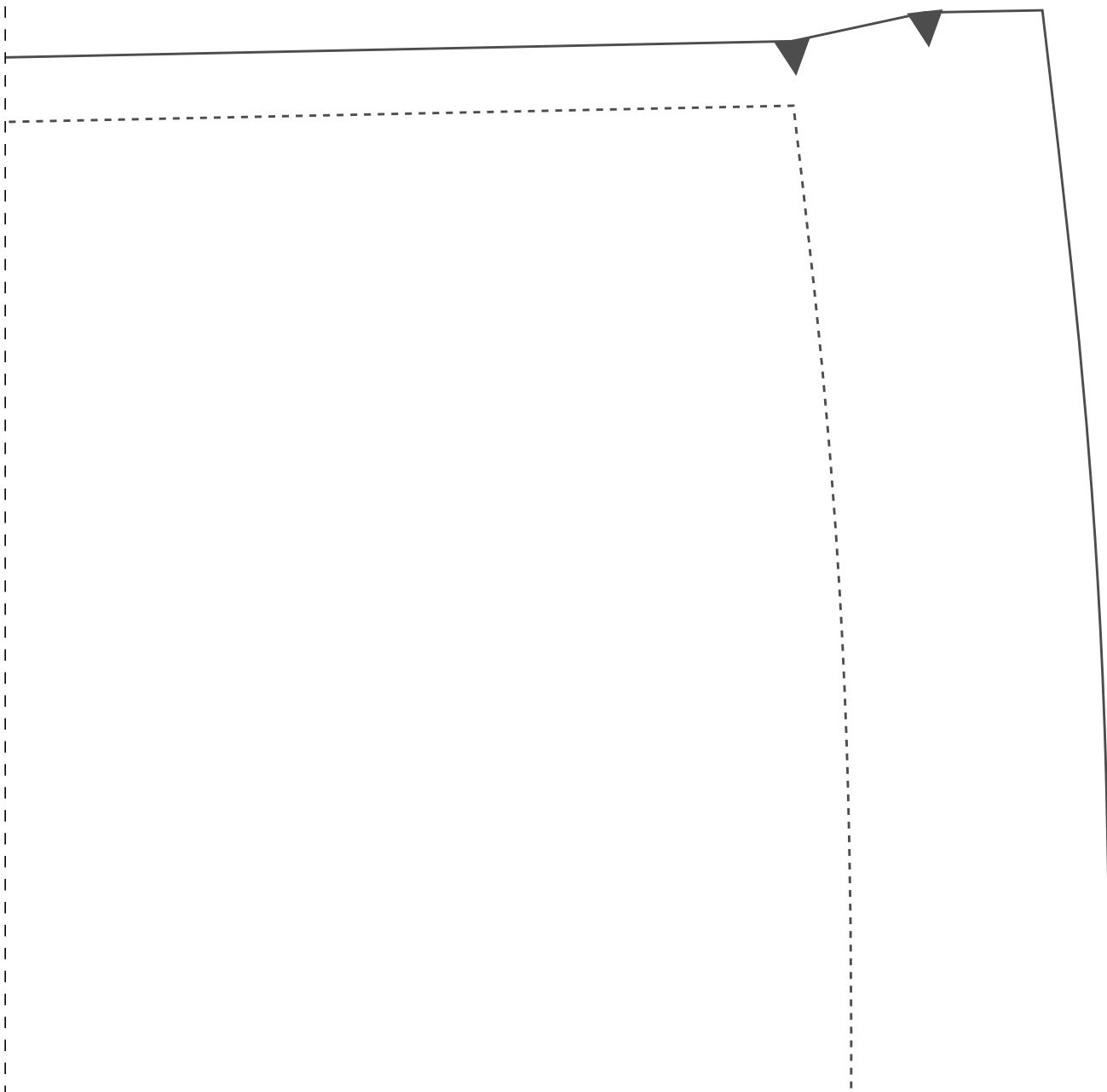
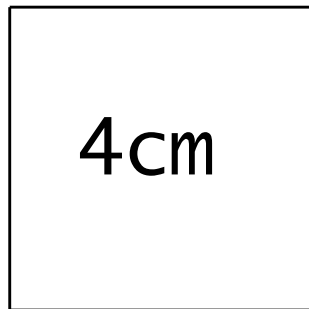
3-5



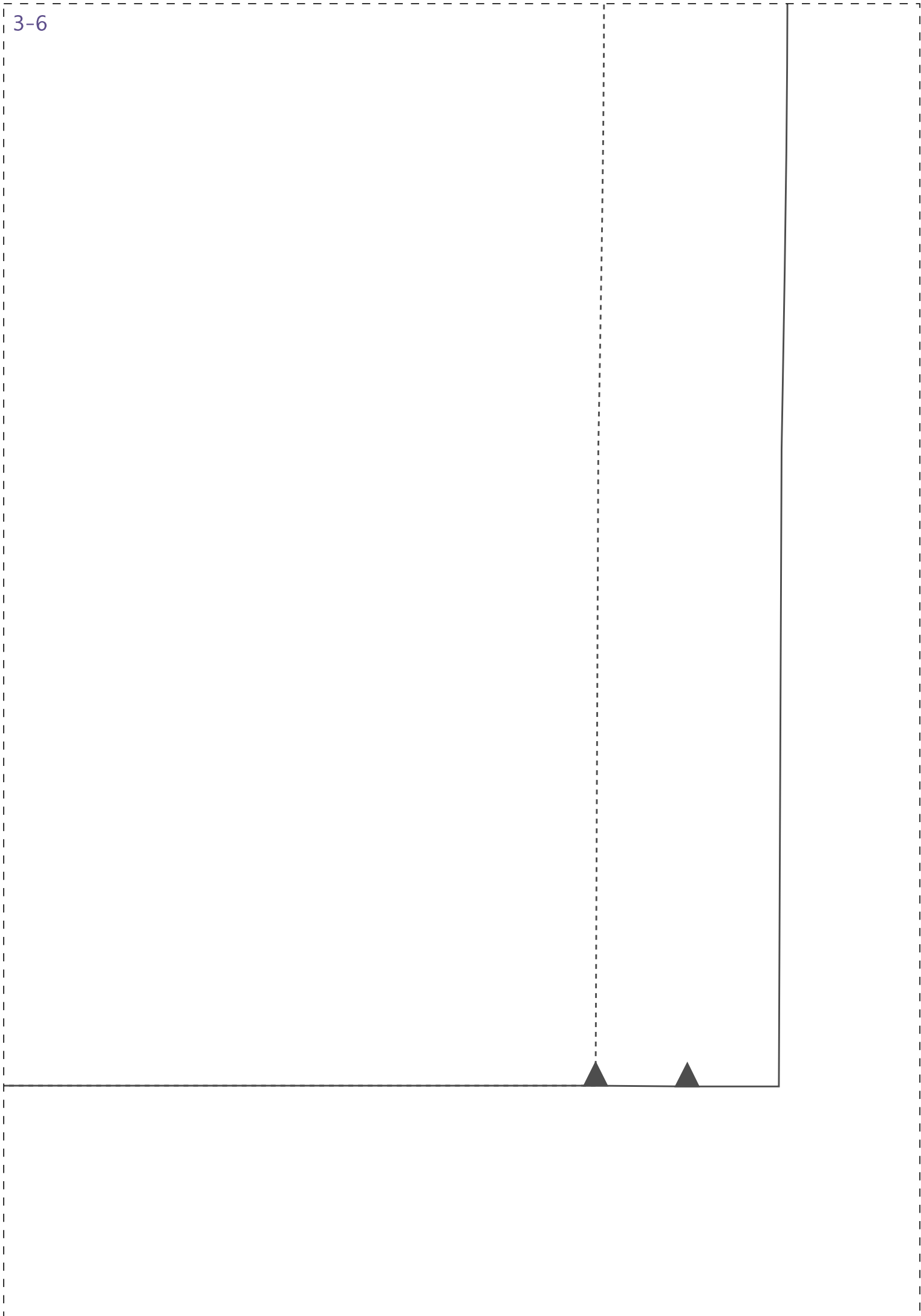




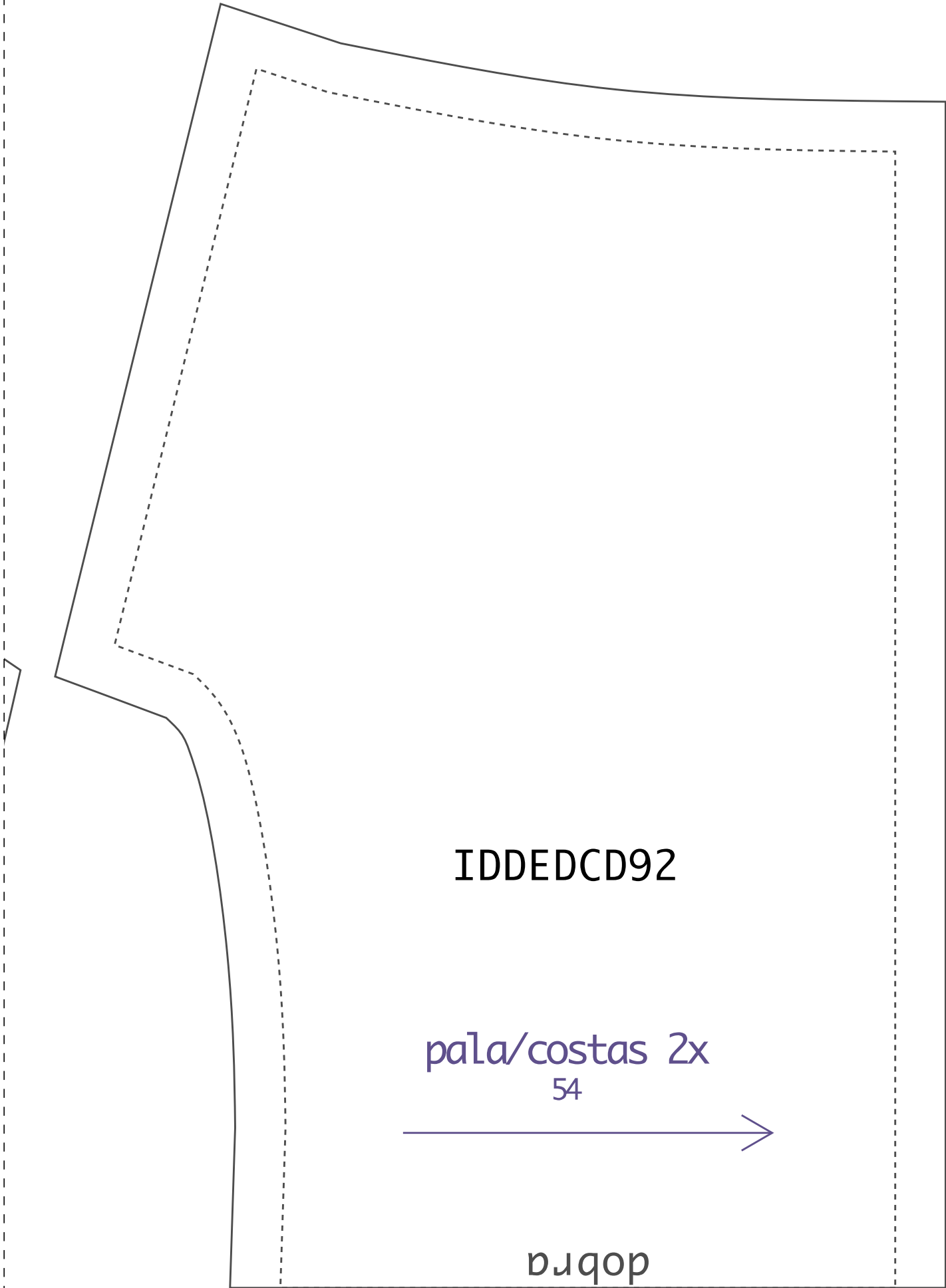
Teste de impressão: ao imprimir seu molde, meça o quadrado que deverá ter a mesma medida informada (4cm), assim você se certificará que ele foi impresso no tamanho correto.



3-6



1-7



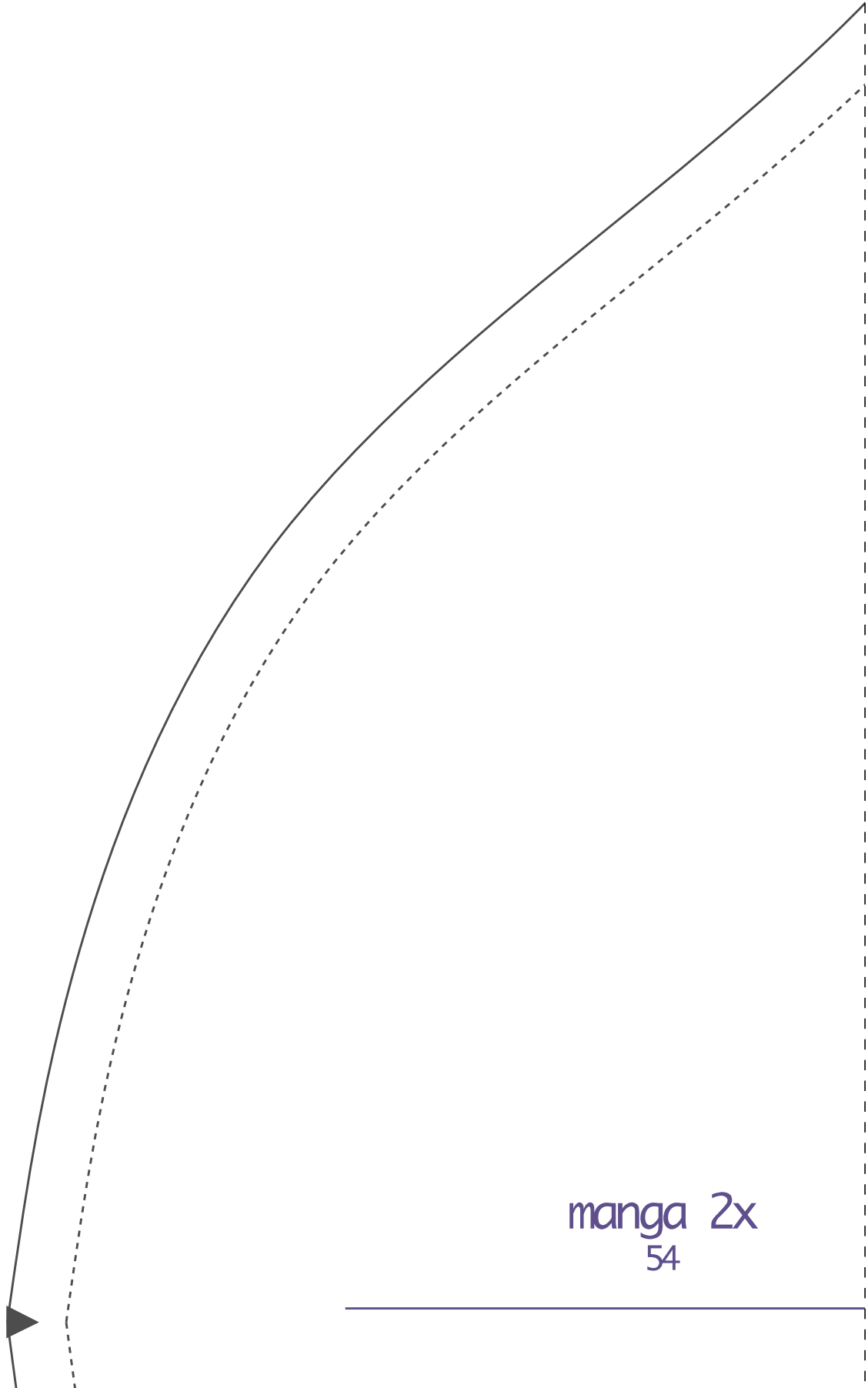
IDDED CD92

pa1a/costas 2x

54



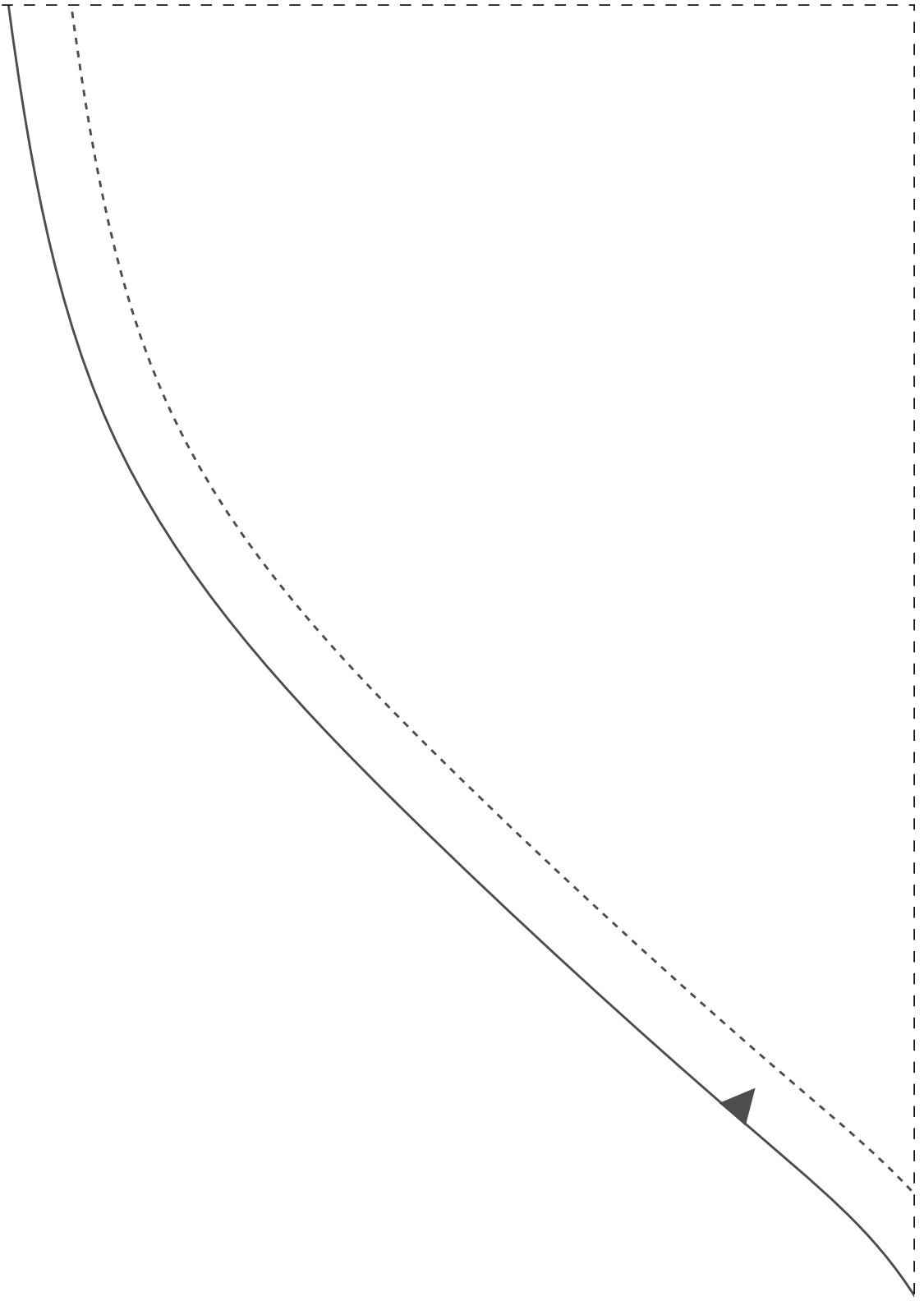
p1qop

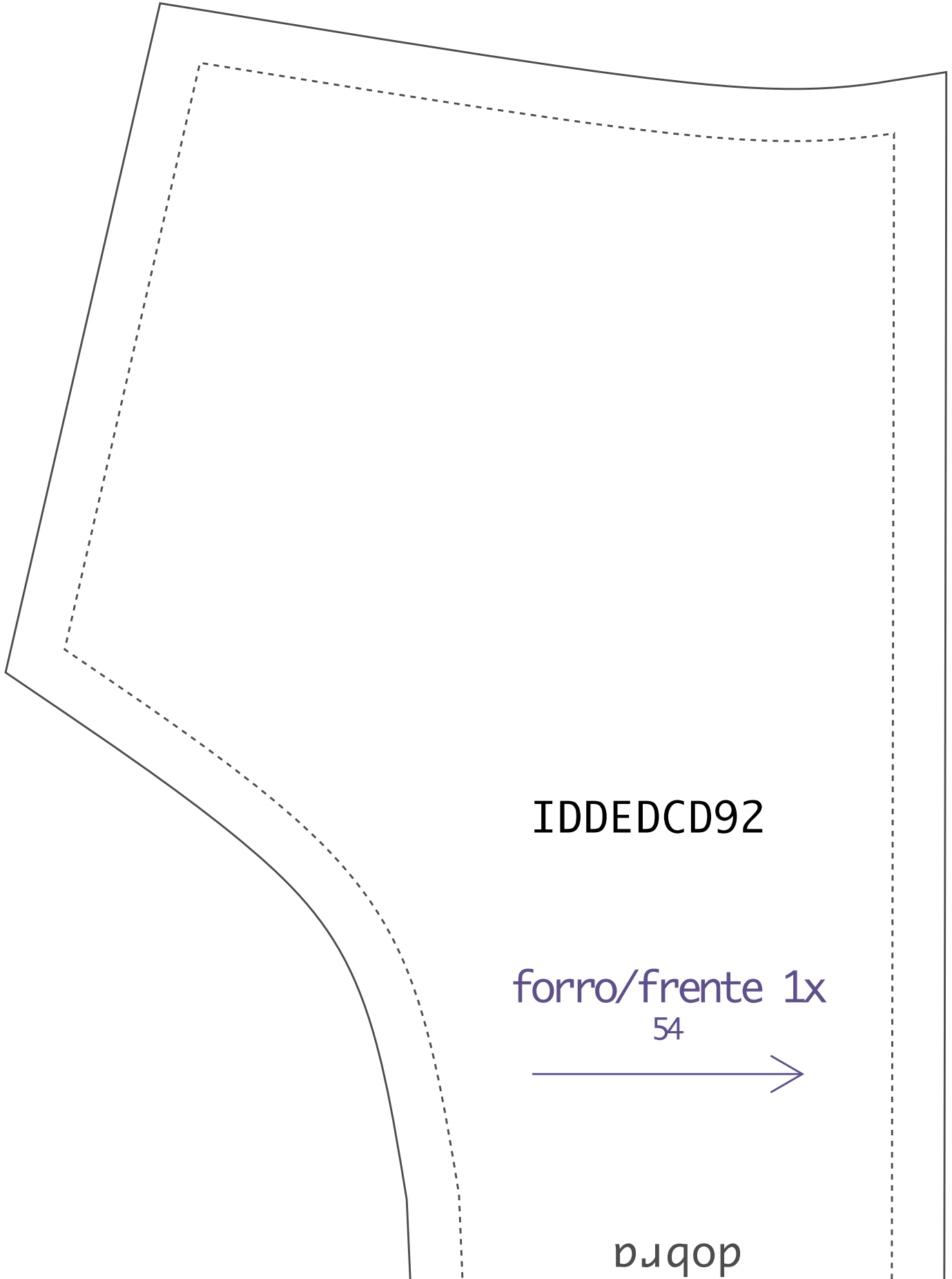


manga 2x  
54



3-7





IDDED CD92

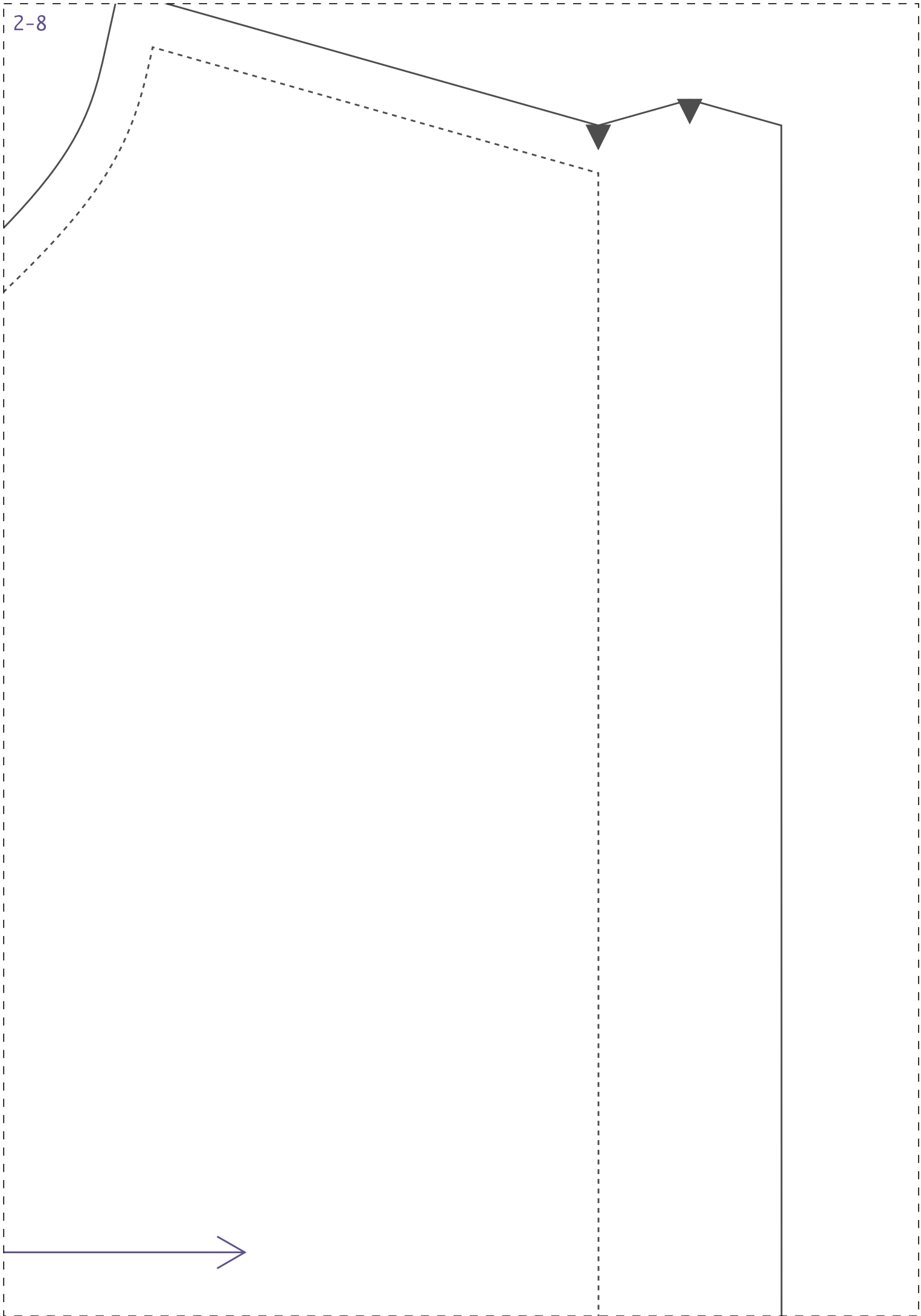
forro/frente 1x

54



dobra

2-8



IDDED CD92

