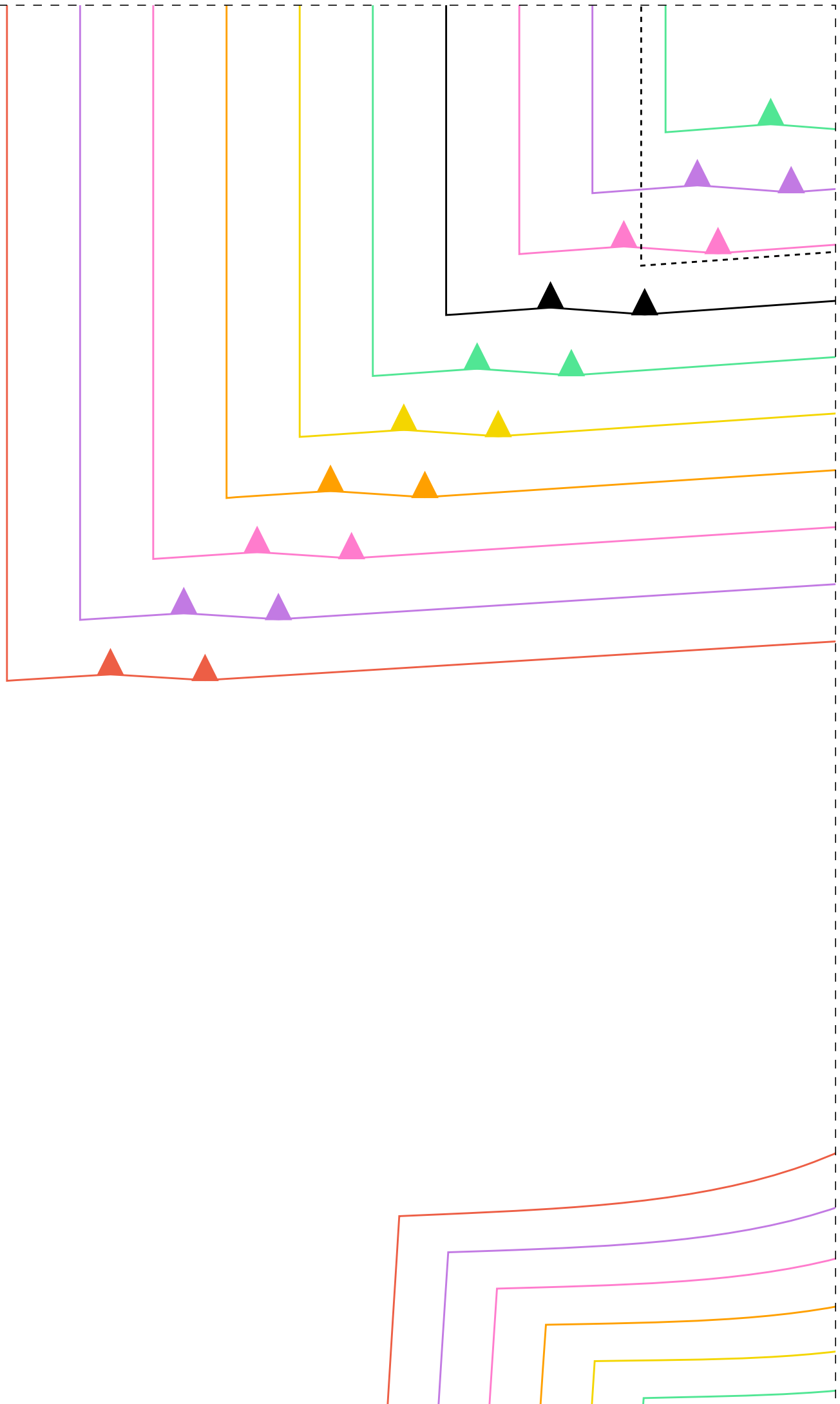


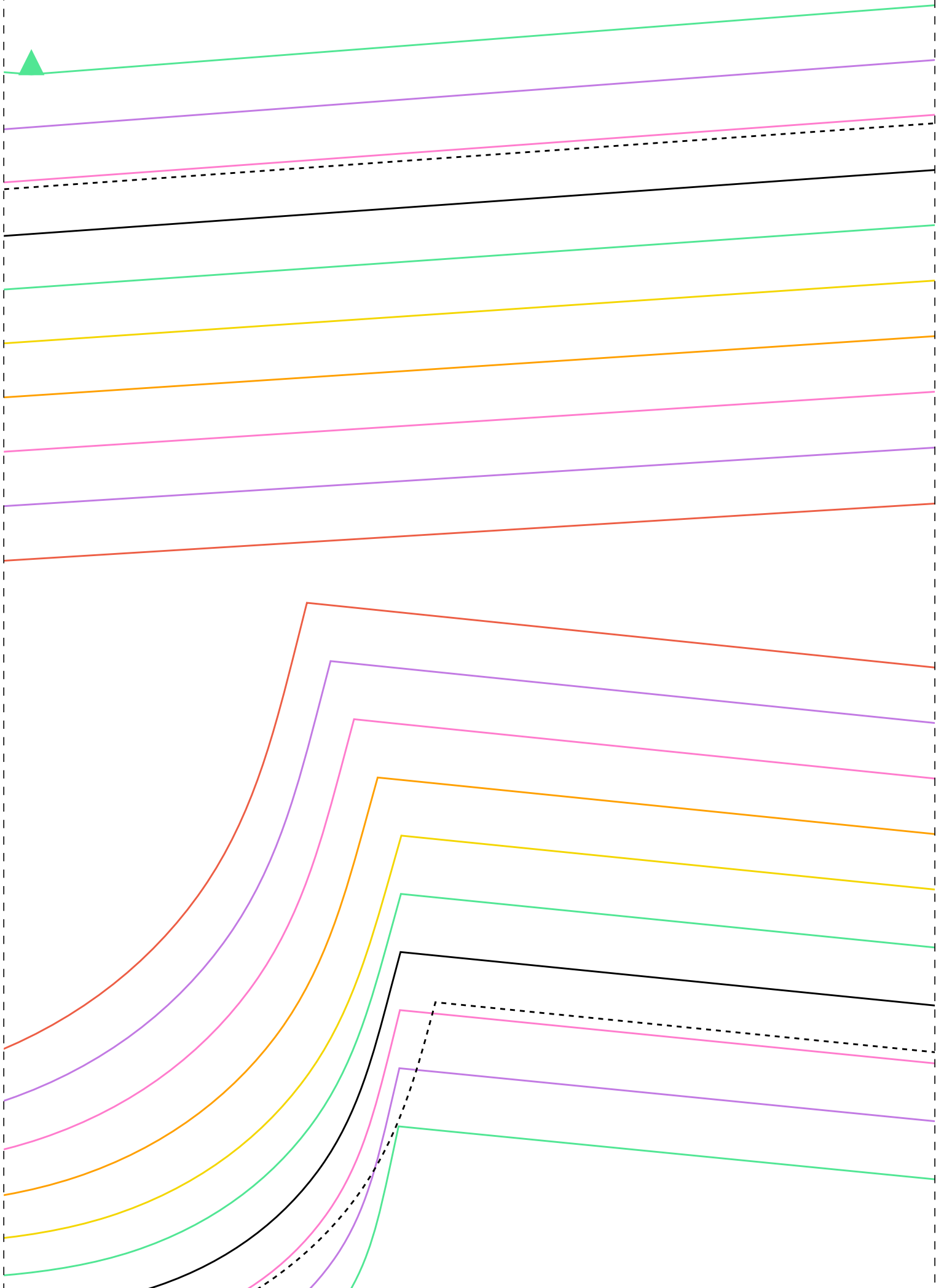
2-1



1-2



2-2





3 2

FICHA TÉCNICA:

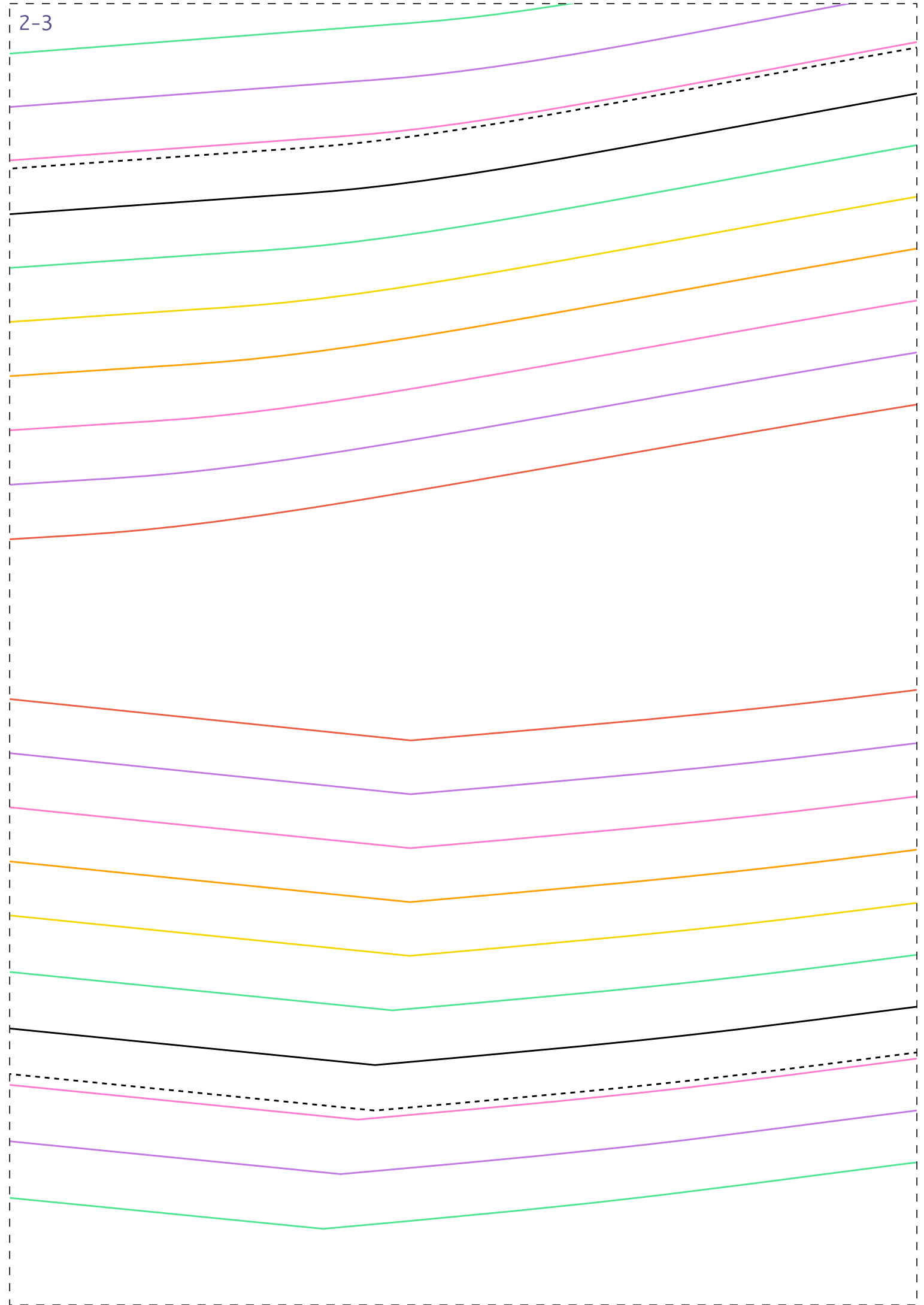
- Tecido plano 1,4m largura
 - Viscose, viscolinho, linhã, tencel, tricoline ou similar
 - Pala dupla
 - 2m para os tamanhos 36 ad
 - 3,2m para os tamanhos 46
-

1-3

d d d d b b

frente 1x

2-3



3-3

no,
Lares

44
A0 54

IDDED CD92

costas 1x

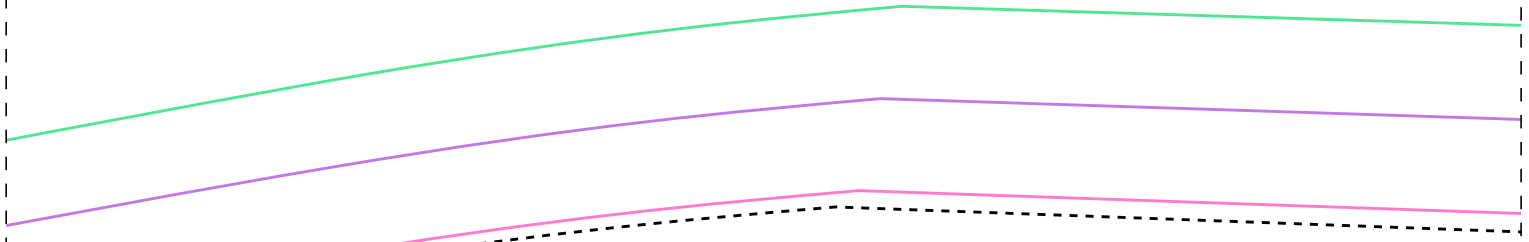
mm

biblioteca

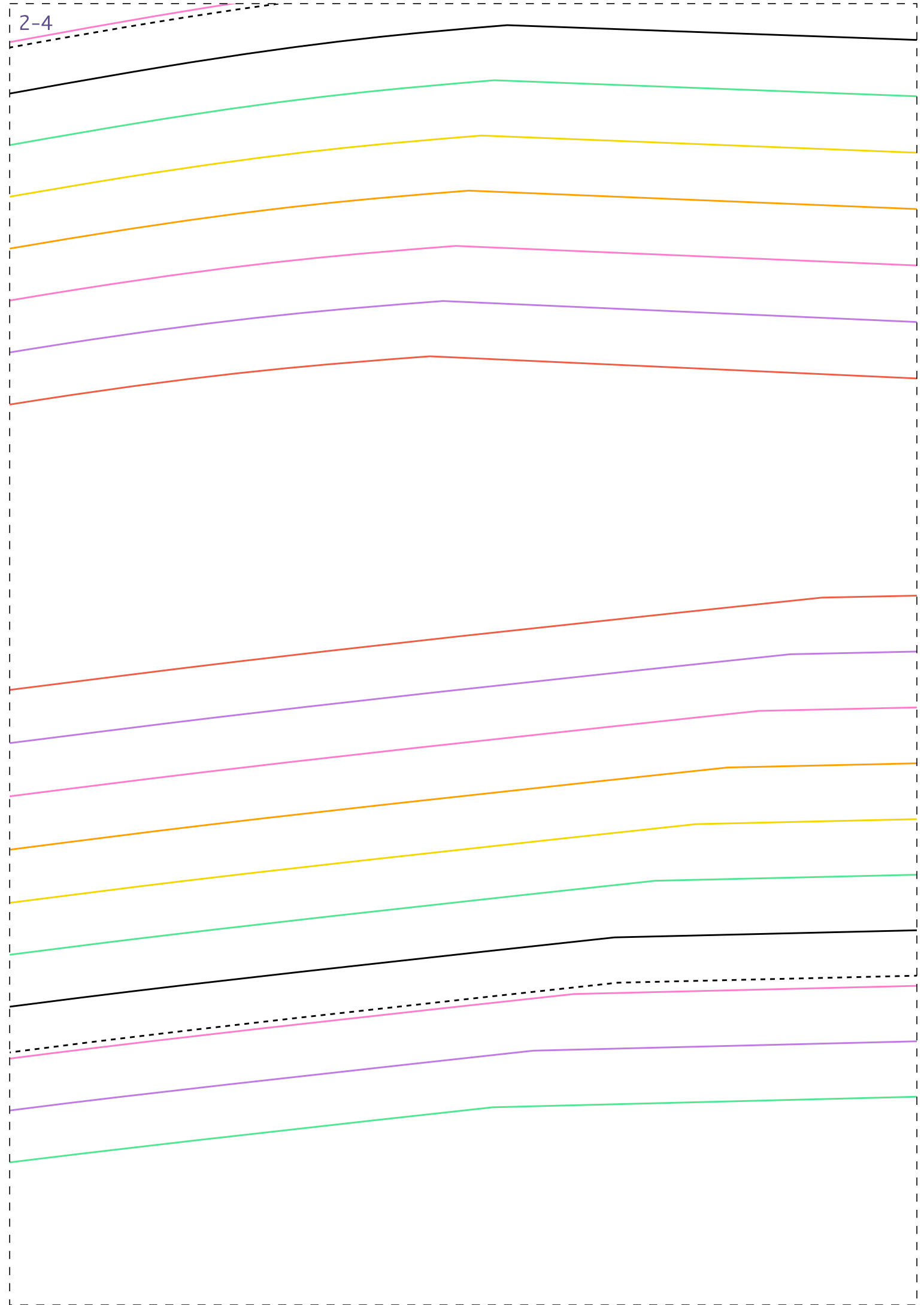
IDDEDCCD92

PROIBIDA REVENDA

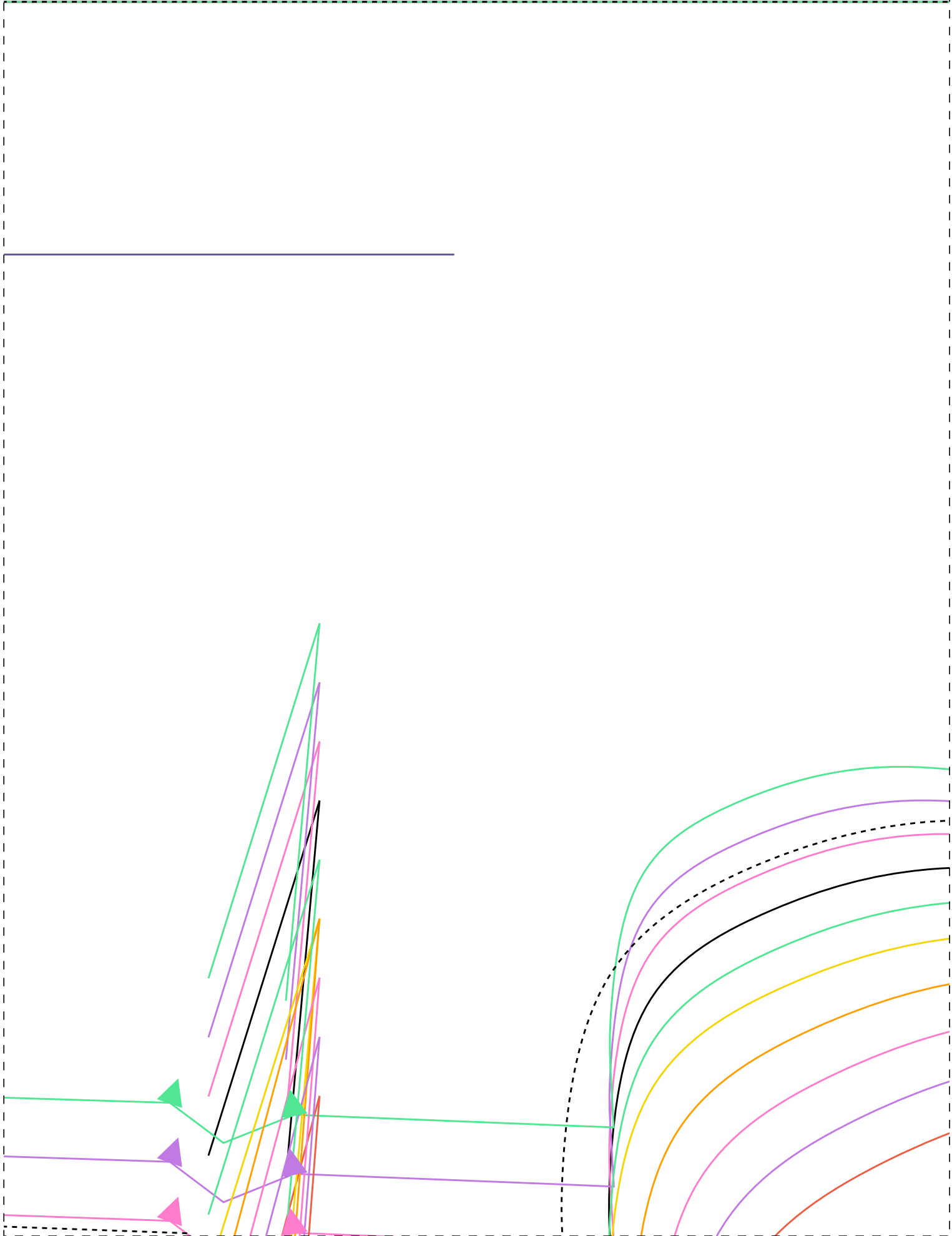
Instituto Diana Demarchi
Escola de Costurar
Vestido Pala e Prega
Costas para iniciantes



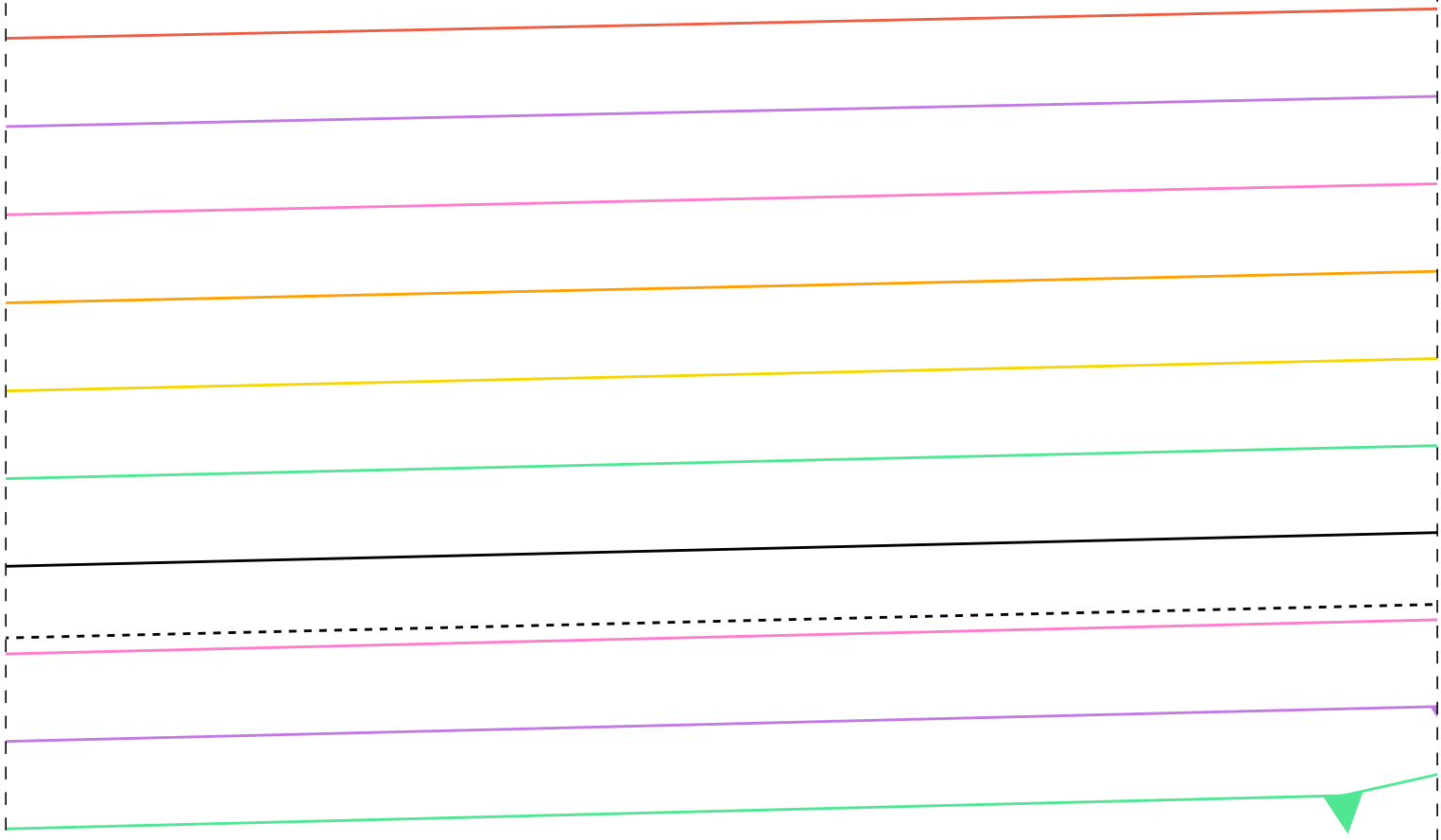
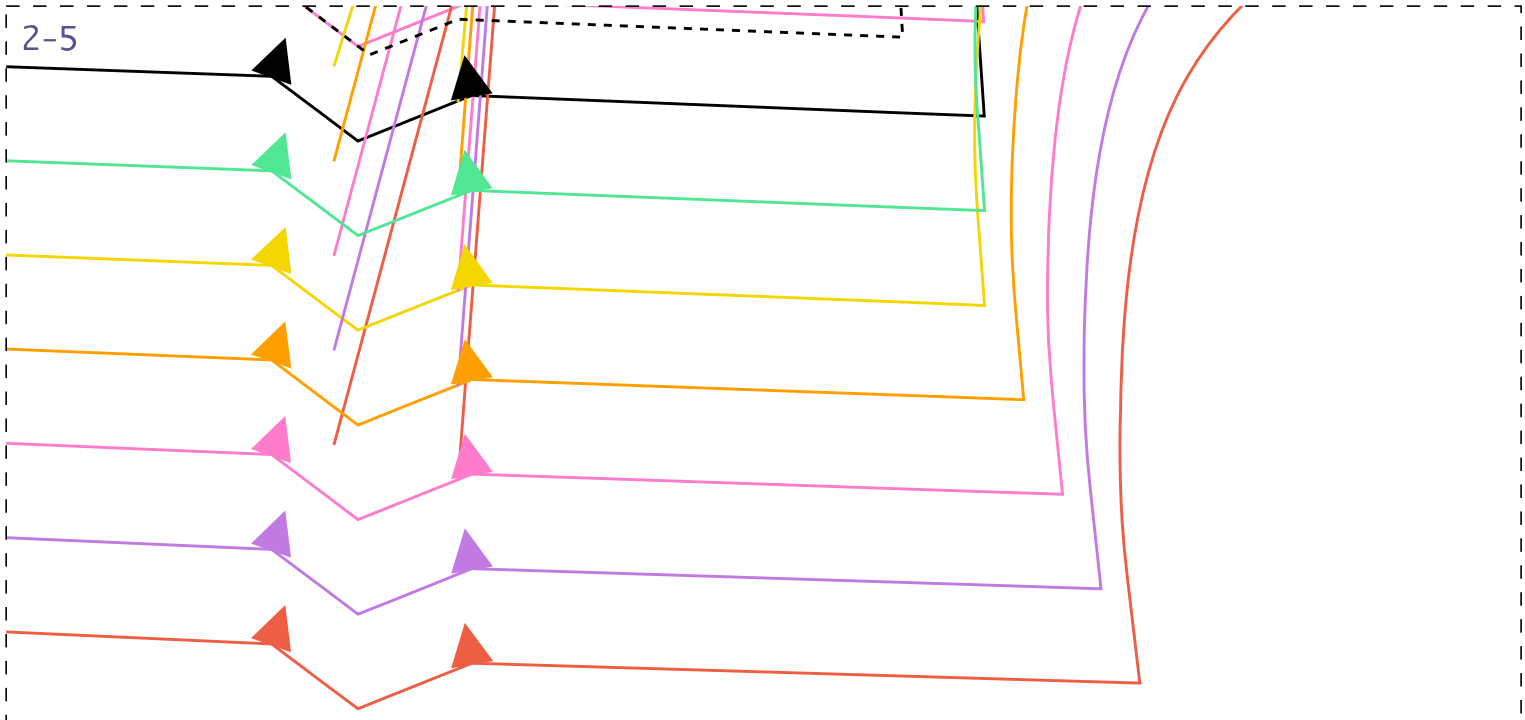
2-4





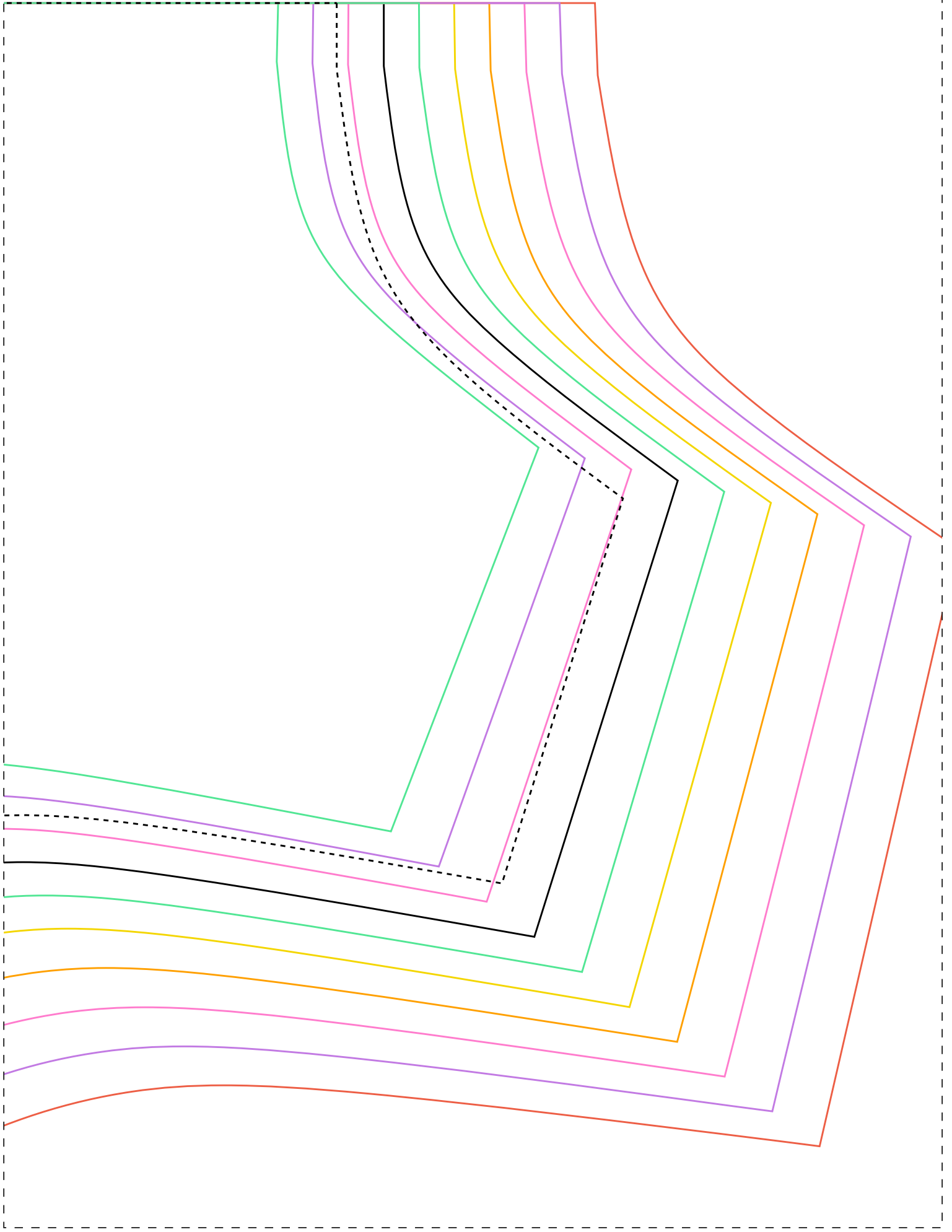


2-5

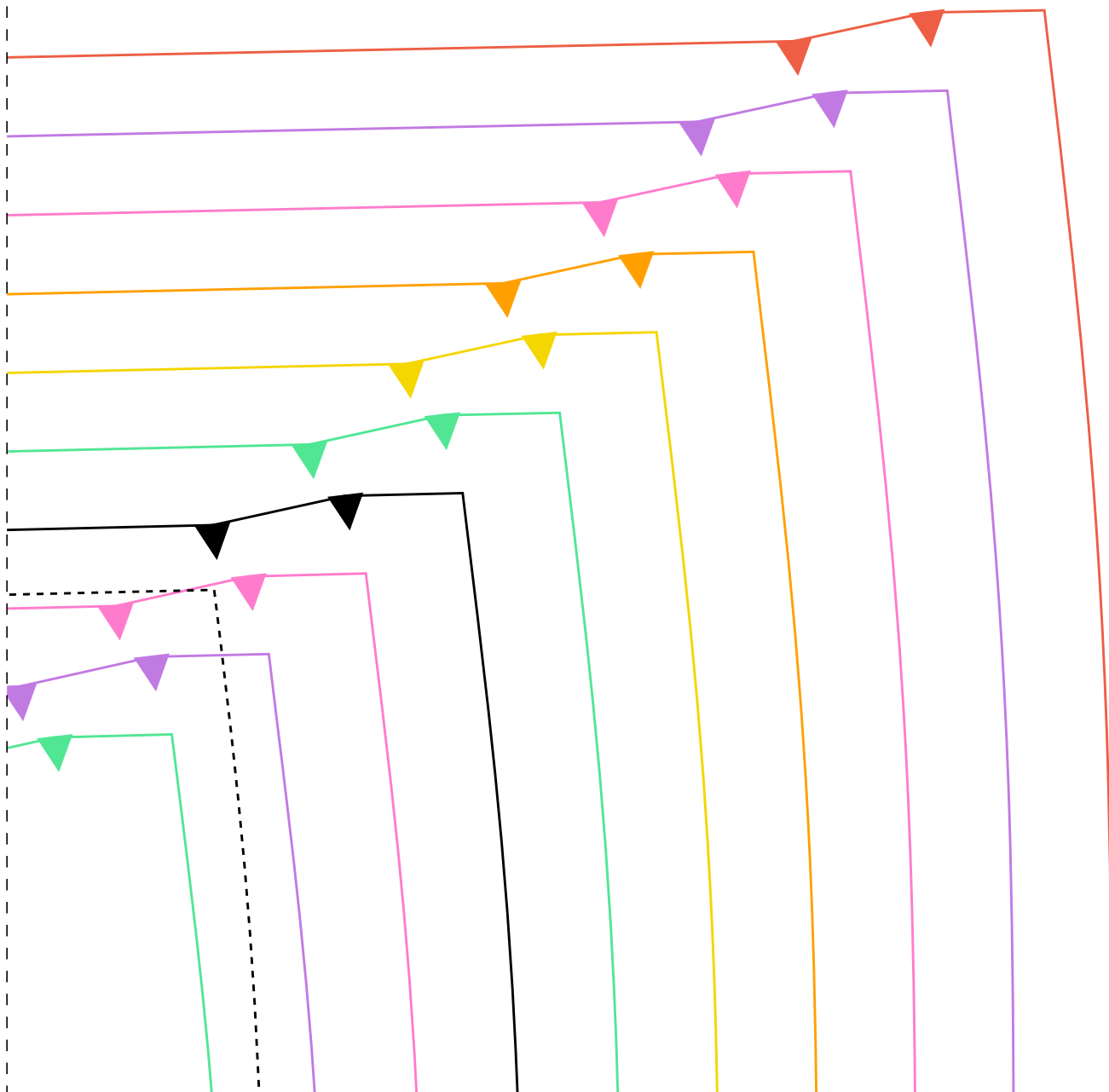
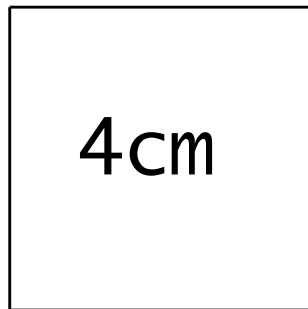


3-5

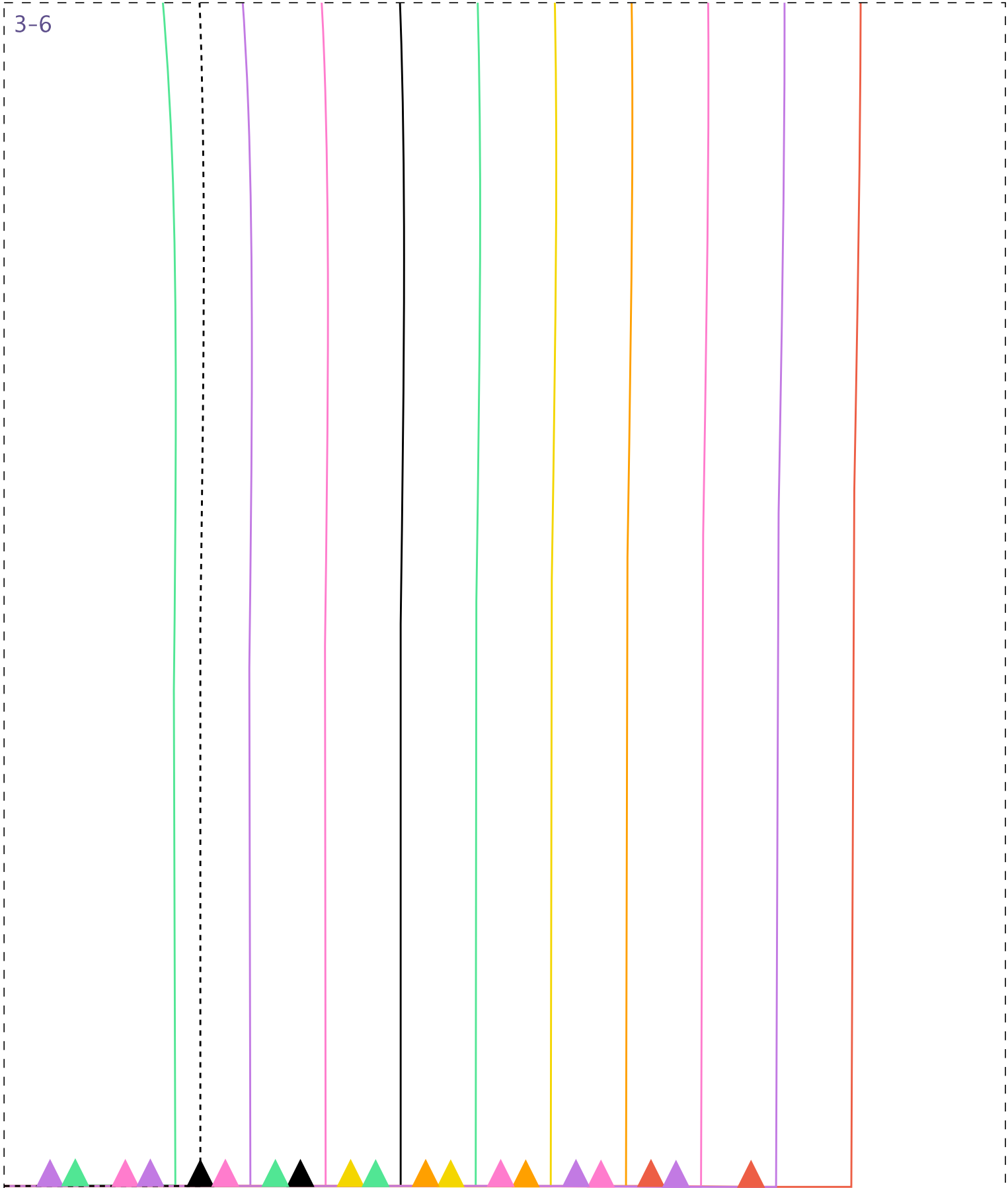




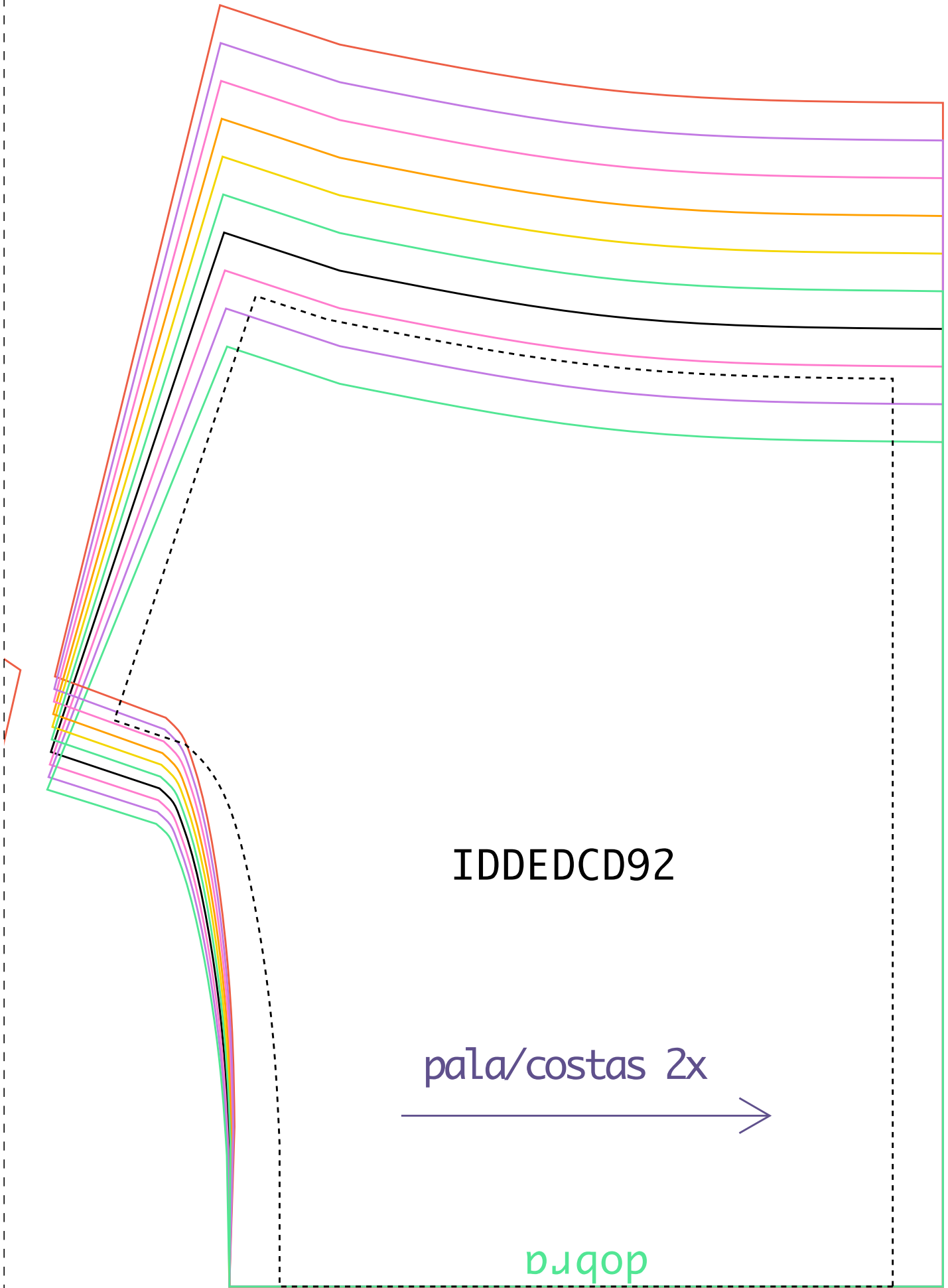
Teste de impressão: ao imprimir seu molde, meça o quadrado que deverá ter a mesma medida informada (4cm), assim você se certificará que ele foi impresso no tamanho correto.



3-6



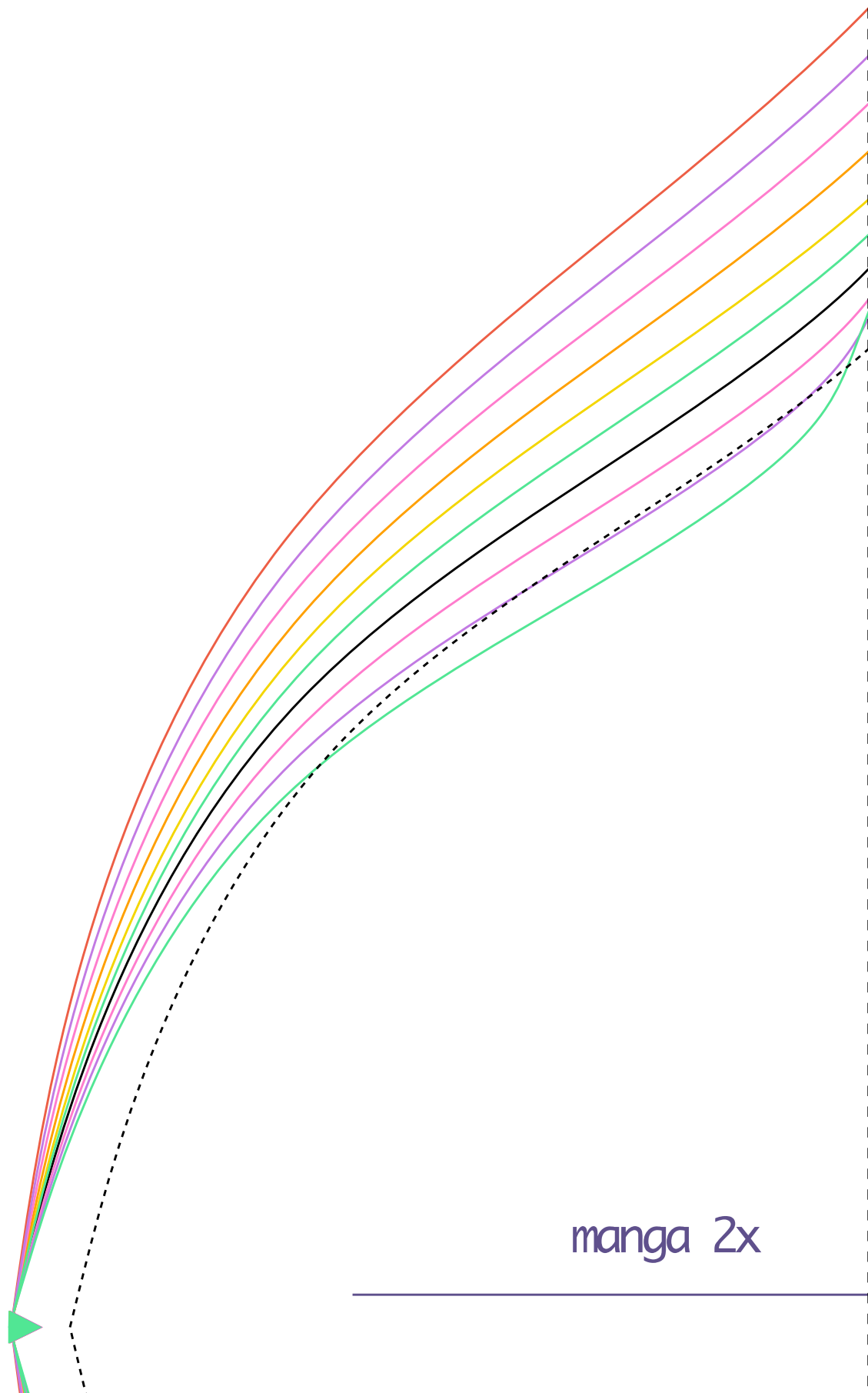
1-7



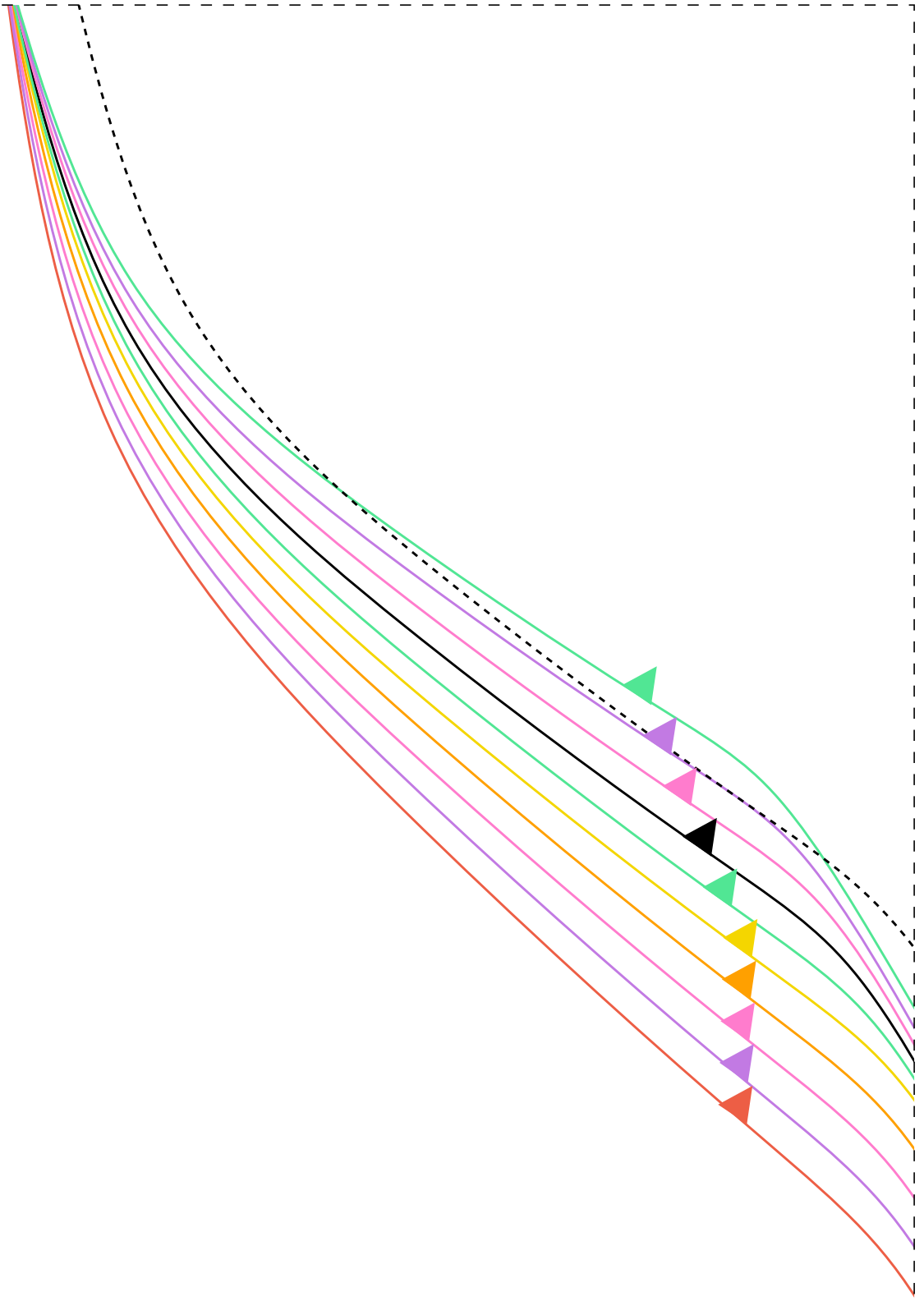
IDDED CD92

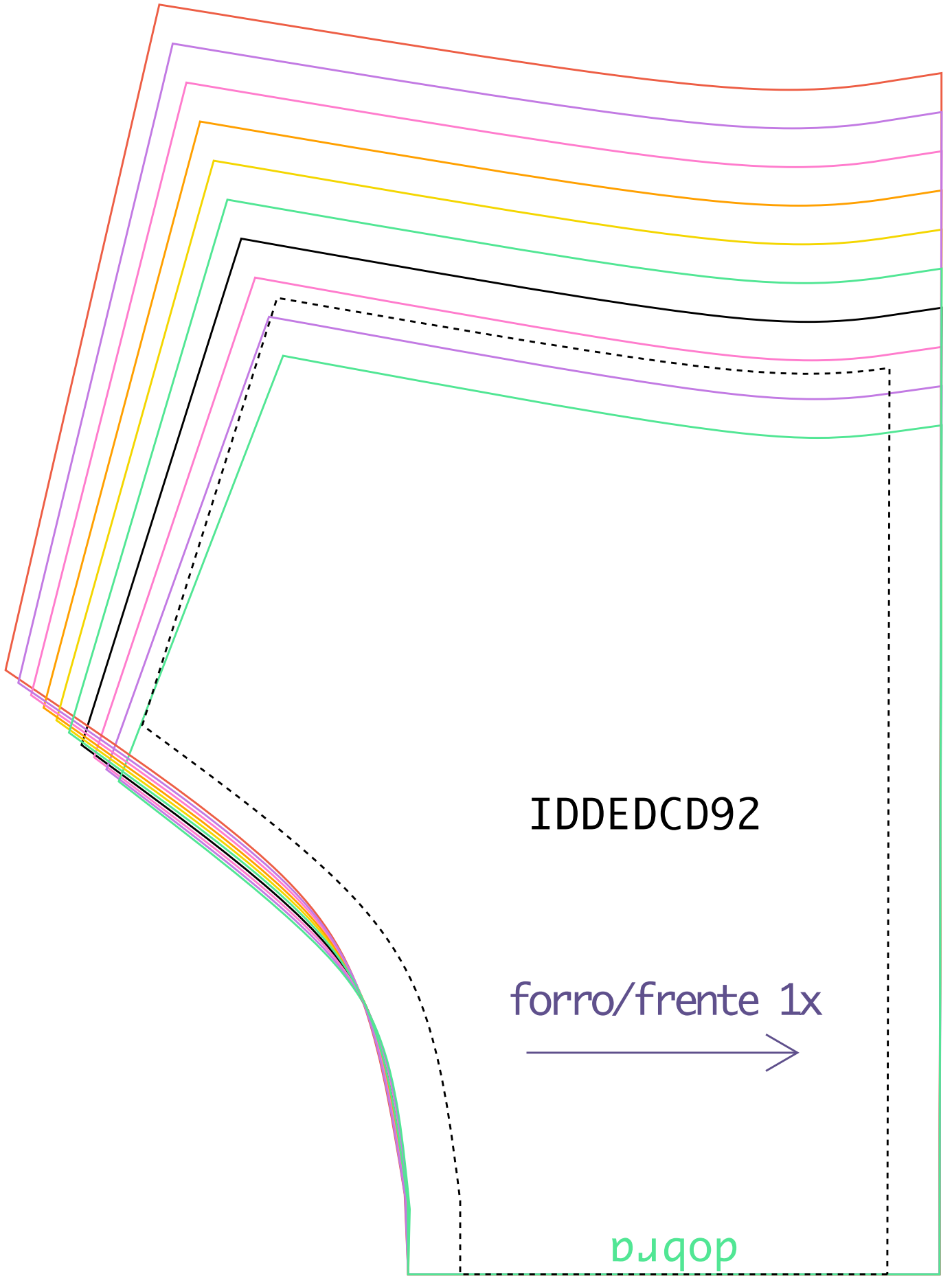
pa1a/costas 2x

v1qop



manga 2x





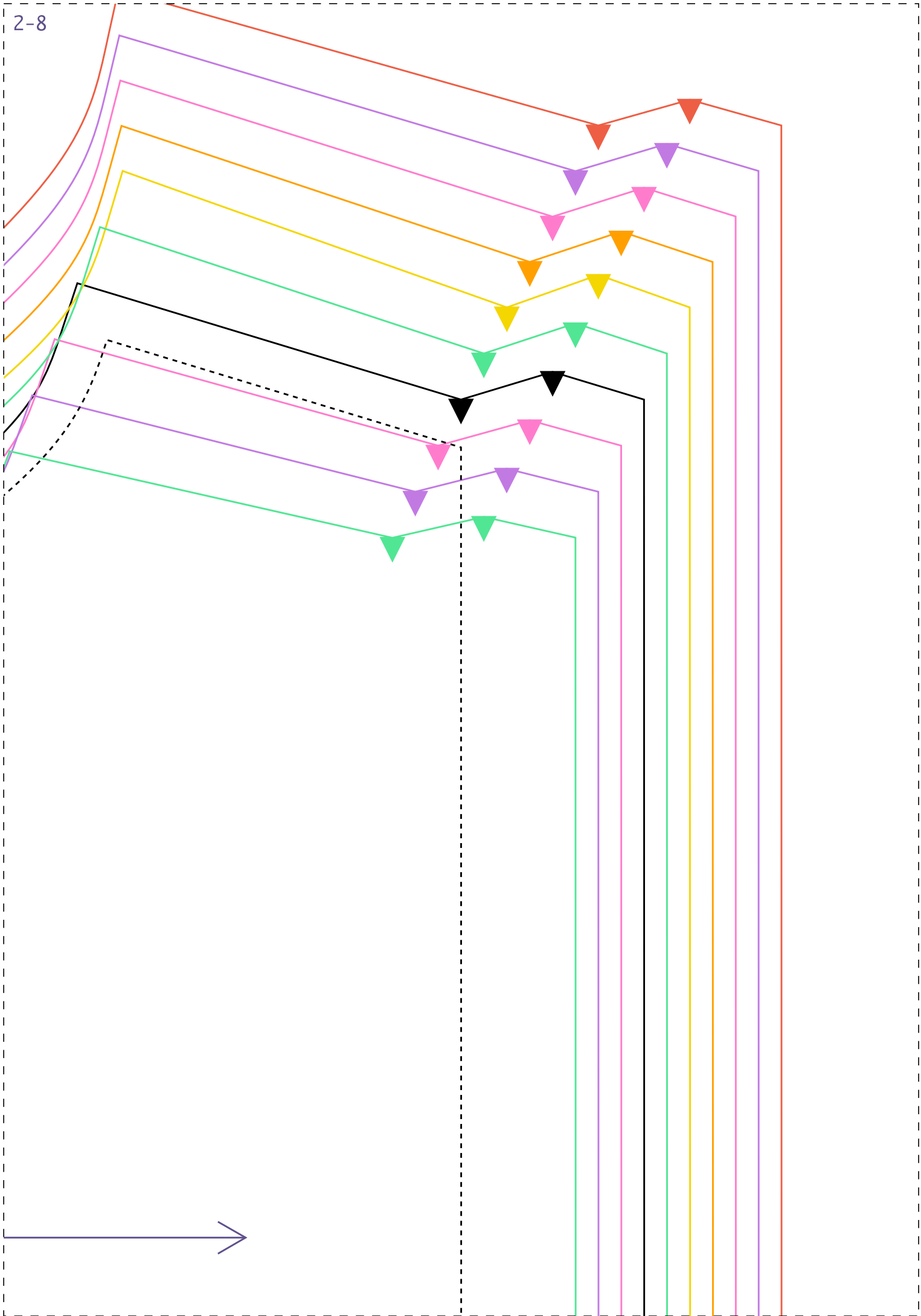
IDDED CD92

forro/frente 1x



dobra

2-8



IDDEDCD92

