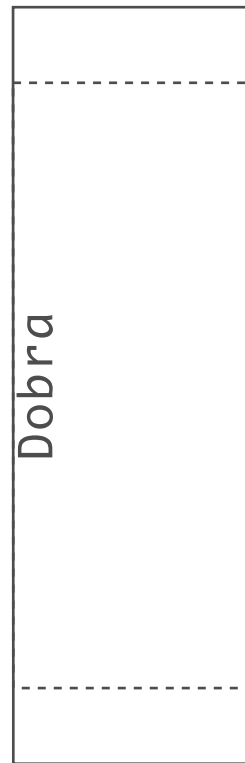
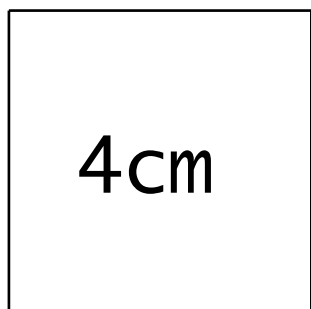
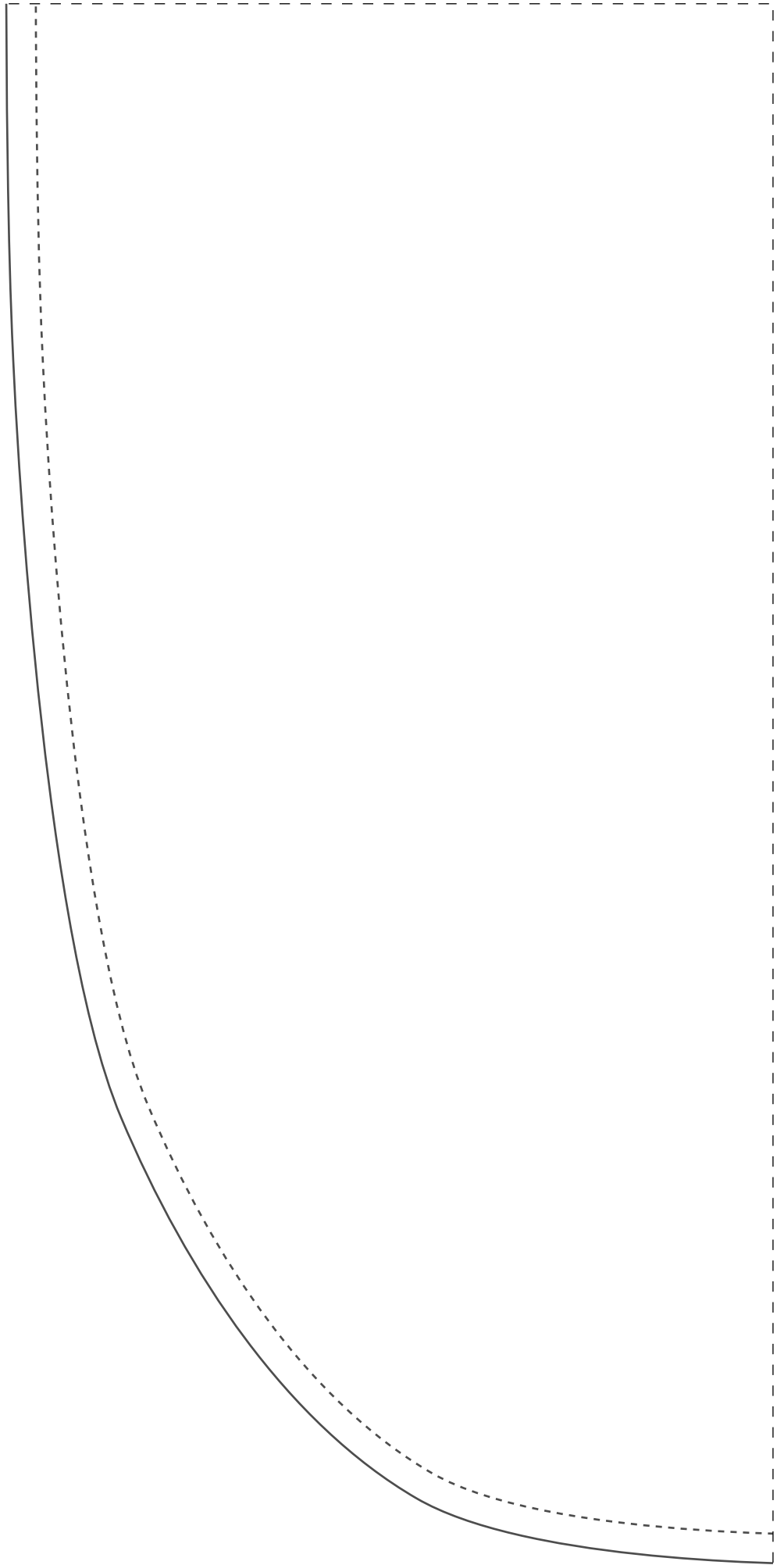


Teste de impressão: ao imprimir seu molde, meça o quadrado que deverá ter a mesma medida informada (4cm), assim você se certificará que ele foi impresso no tamanho correto.



2-1





IDDED156 Shorts com Transpasse

Frente

2X

46

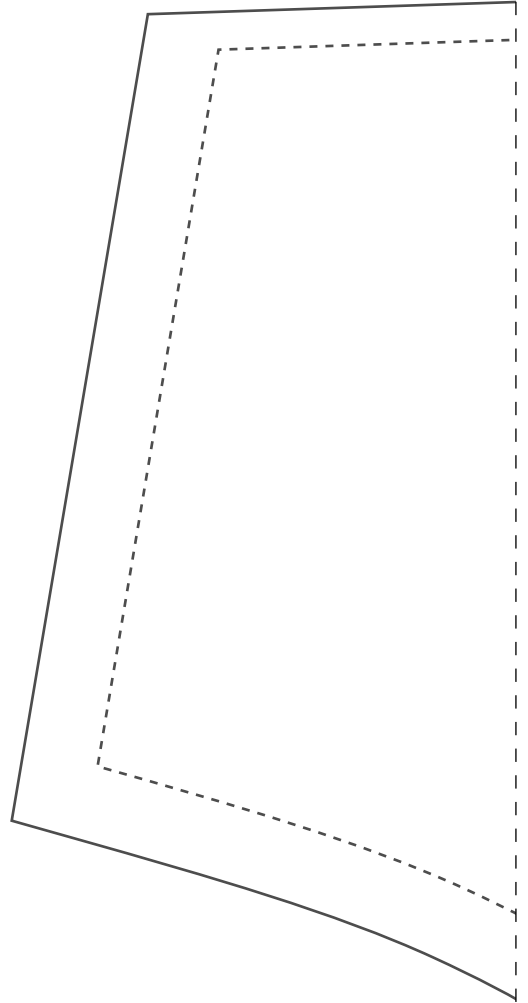
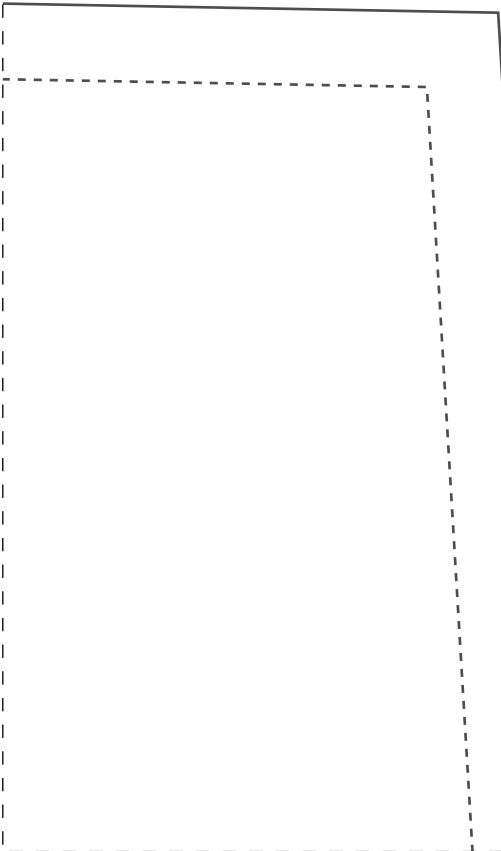


Instituto Diana Demarchi
Shorts com Transpasse

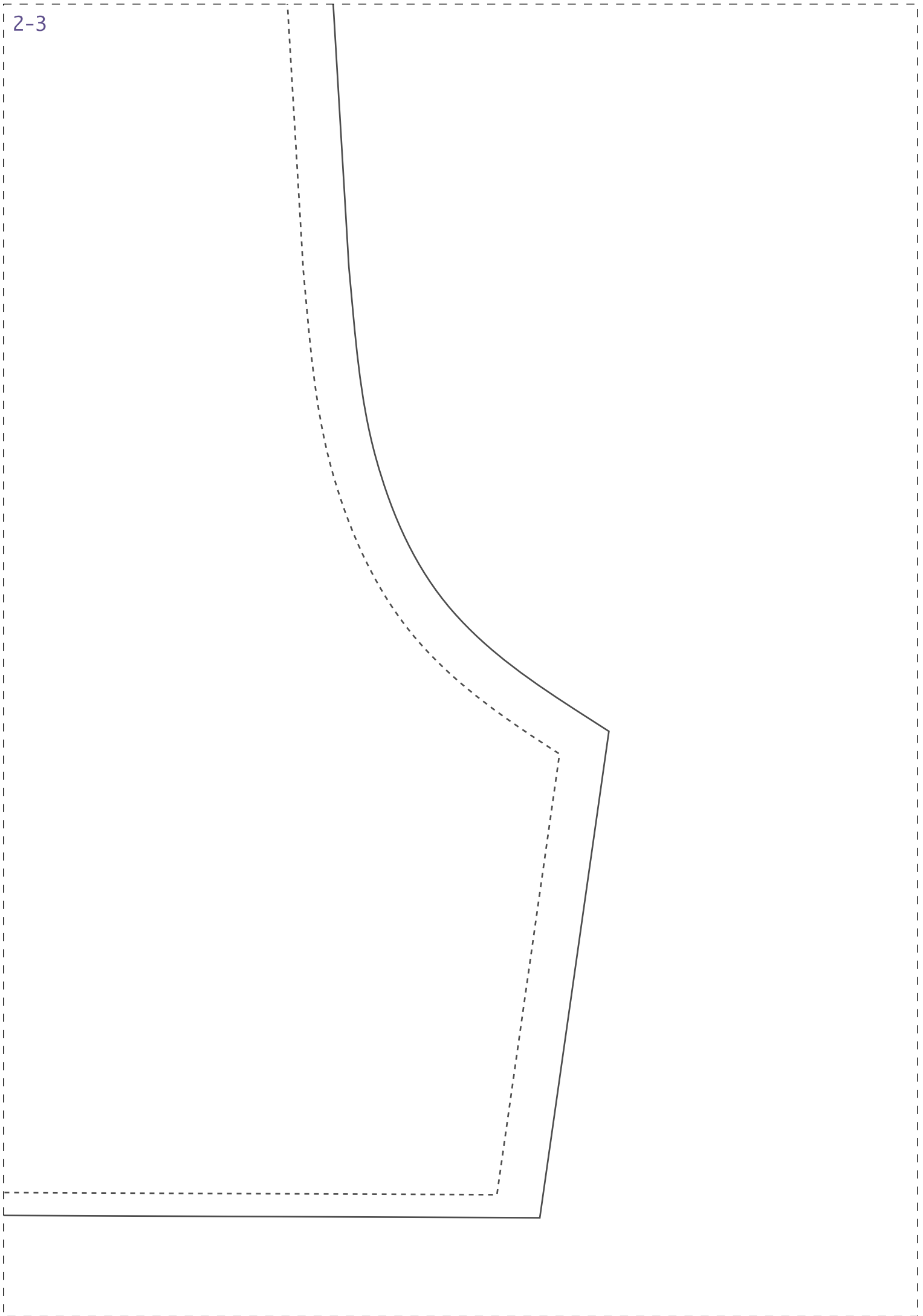
PROIBIDA REVENDA



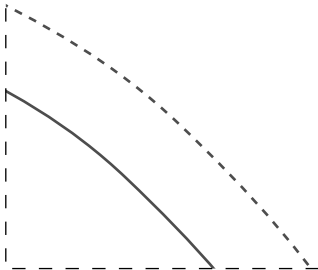
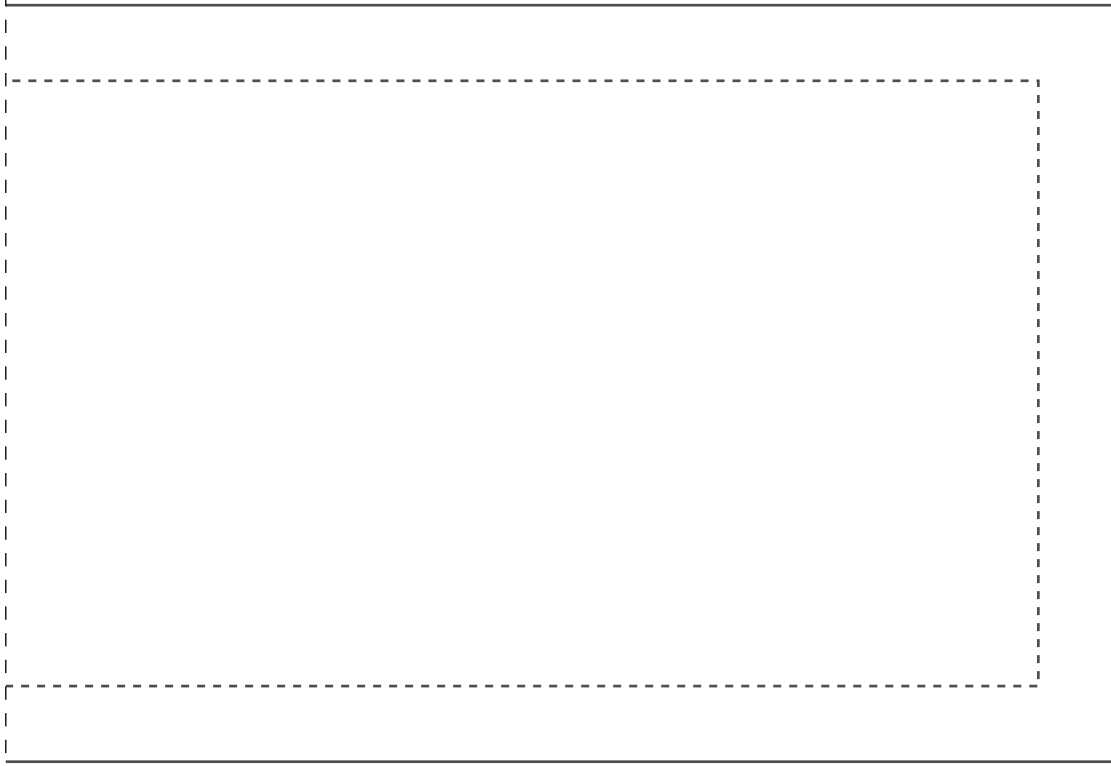
100E00156 Shorts con Transpase
C05
1x
46



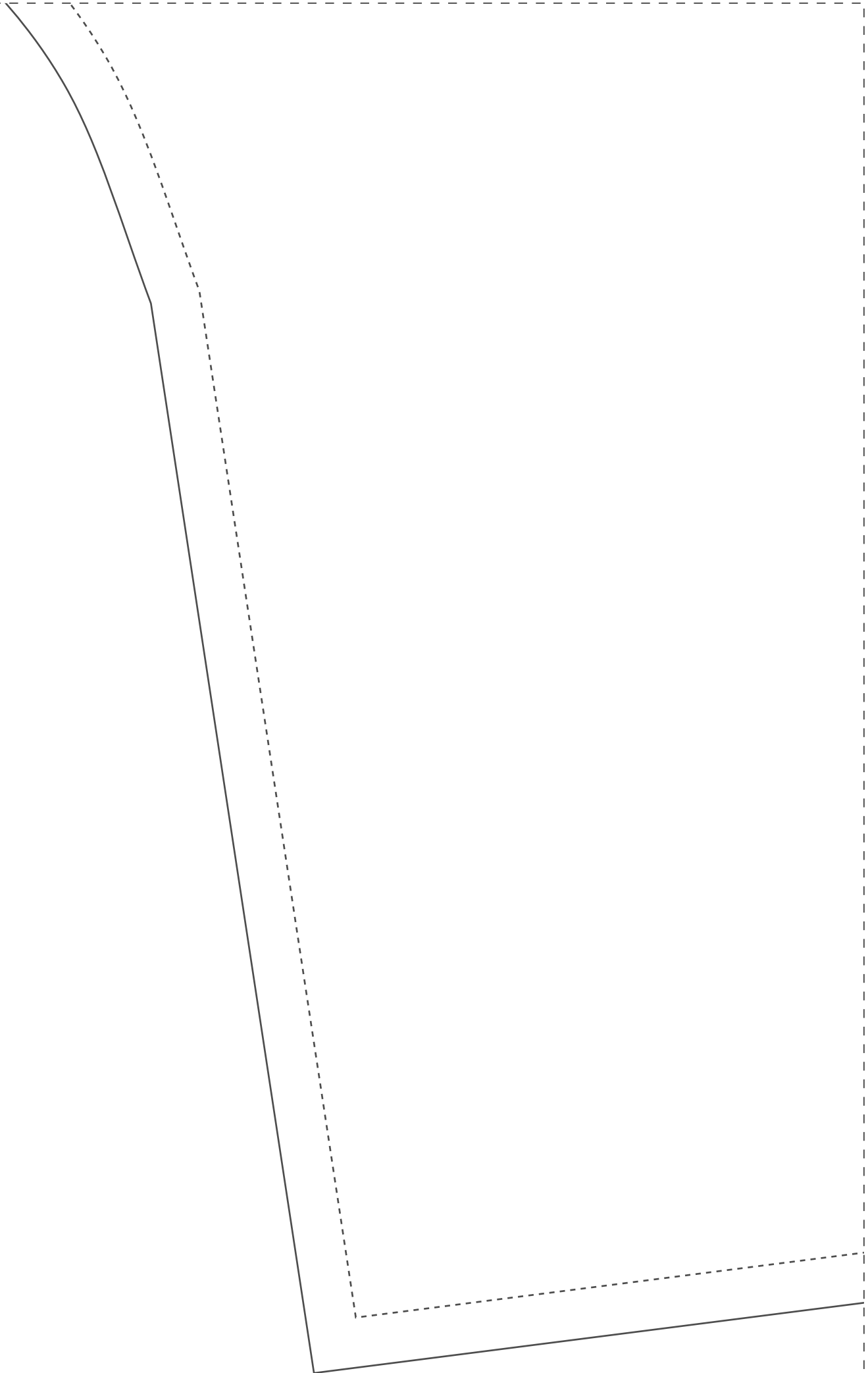
2-3



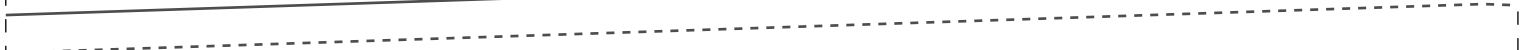
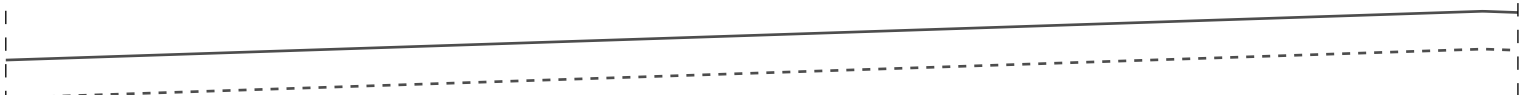
1-4



2-4



1-5



n Transpasse



IDDED156 Shorts cor

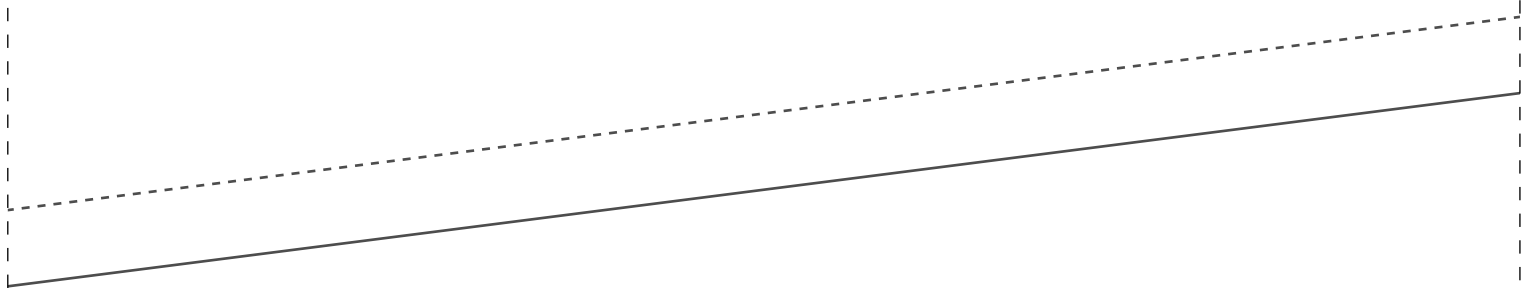
Costa

2x

46

Ficha técnica

- Tecido plano 1,4m largura
- Viscose, viscolinho ou similares
- Short transpassado na lateral
- Costure lateral costas no pique frente
- Cortar elastico 3,5cm a 4 cm largura: 36=74cm, 38=76cm, 40= 78cm, 42=80cm 44=82cm, 46=84cm, 48=86cm, 50=88cm, 52=90cm, 54=92cm
- 1,2m para todos os tamanhos



1-6

