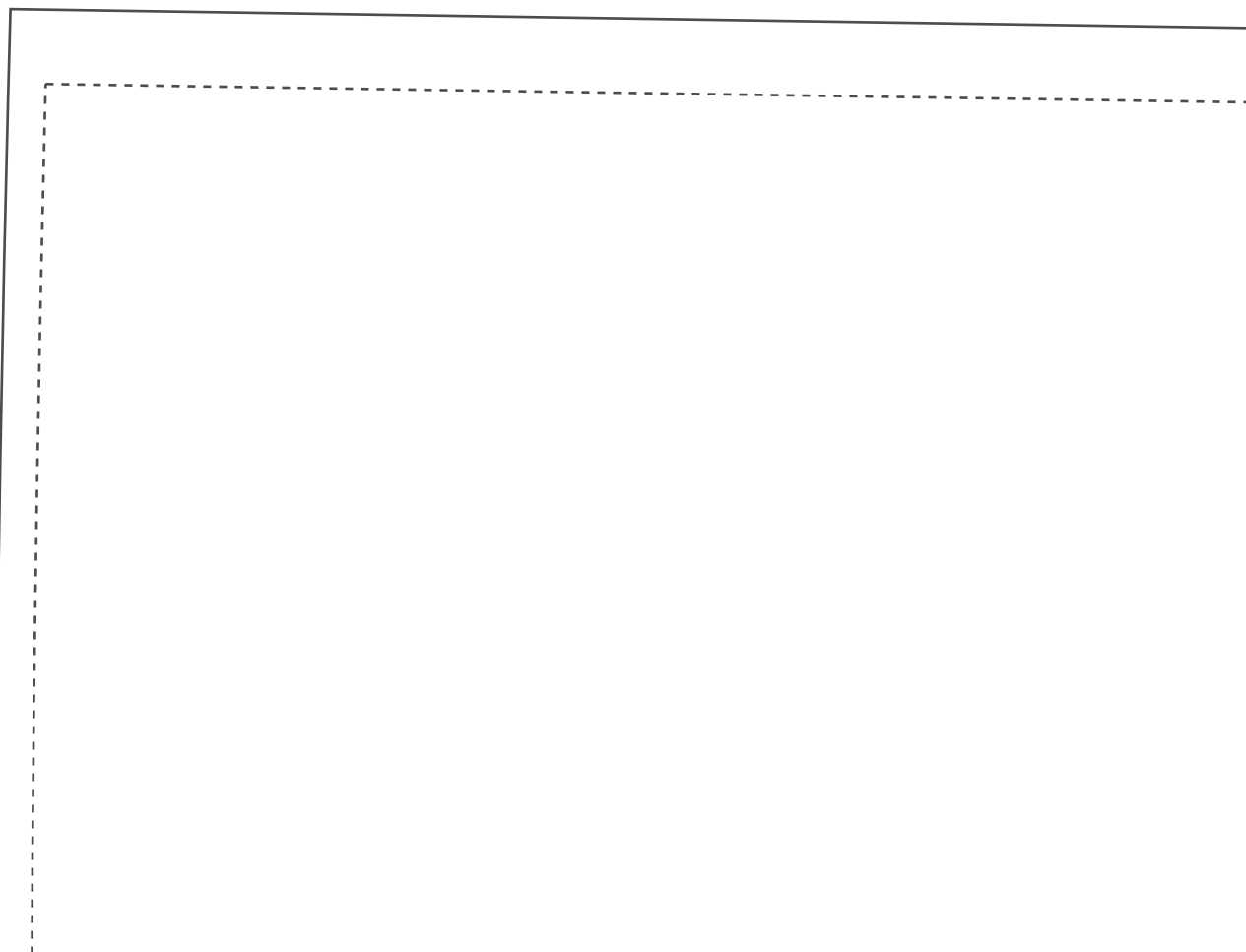
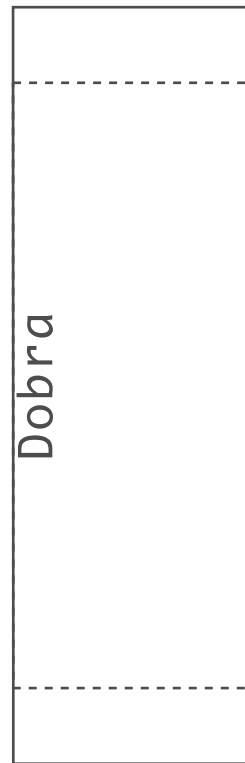
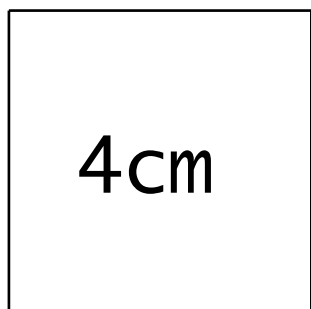
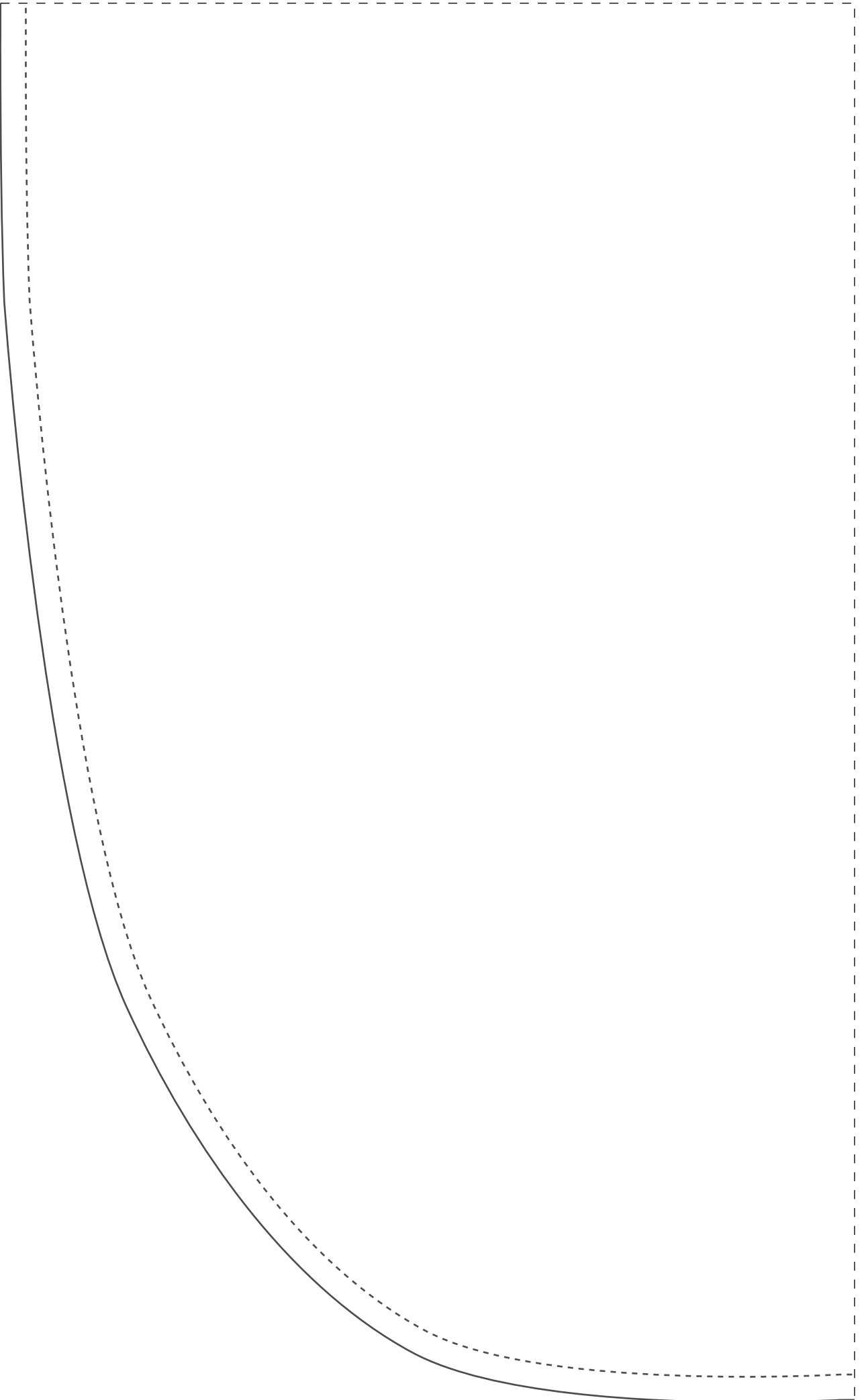


Teste de impressão: ao imprimir seu molde, meça o quadrado que deverá ter a mesma medida informada (4cm), assim você se certificará que ele foi impresso no tamanho correto.



2-1





IDDED156 Shorts com Transpasse

Frente

2X

52

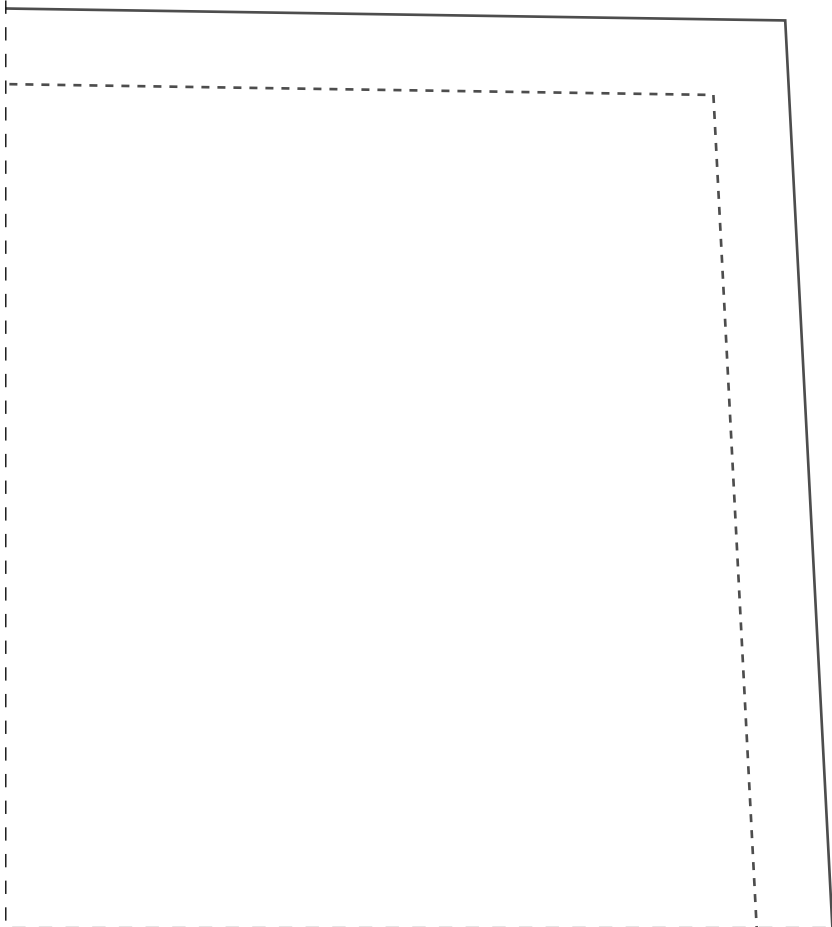


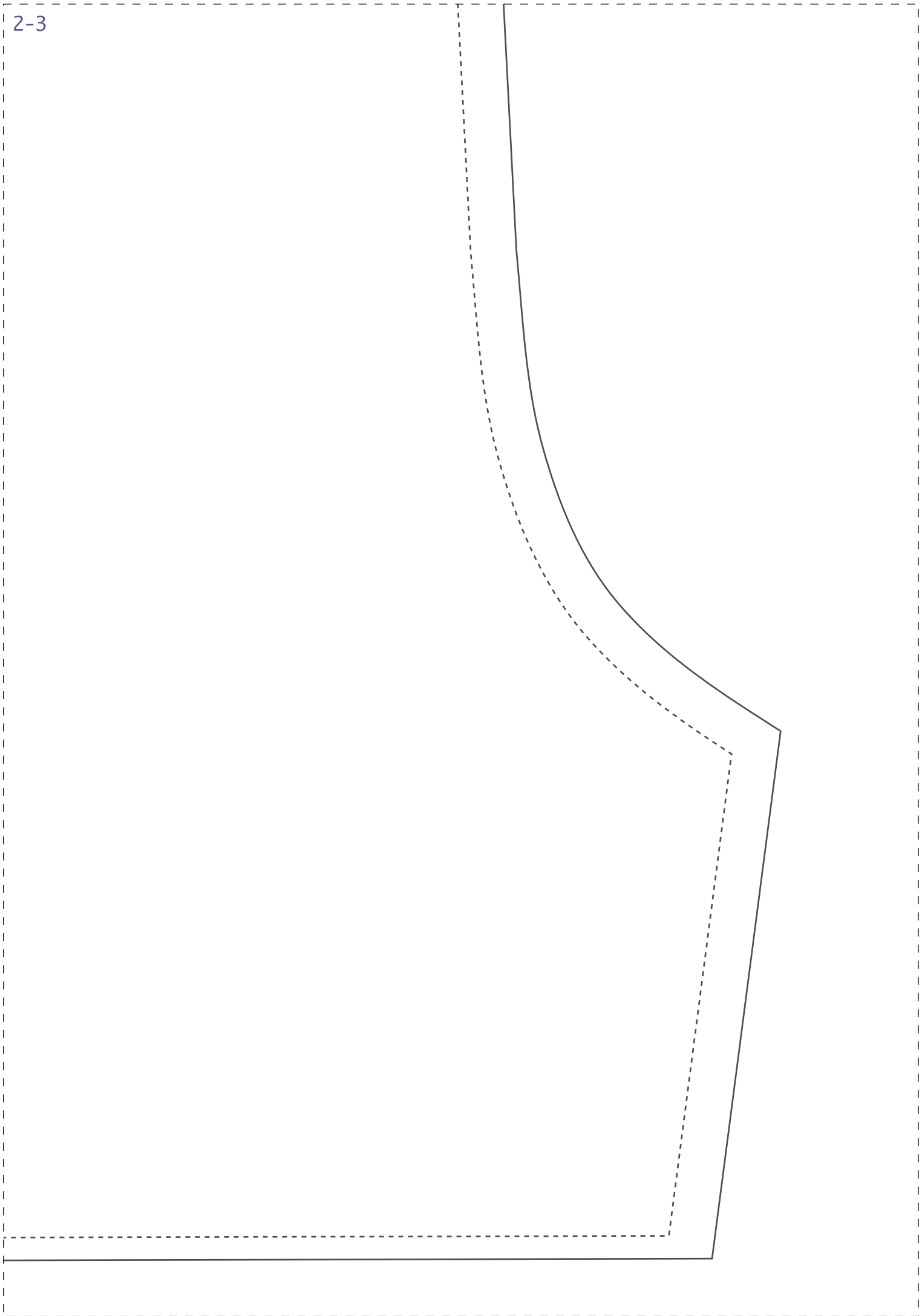
Instituto Diana Demarchi  
Shorts com Transpasse

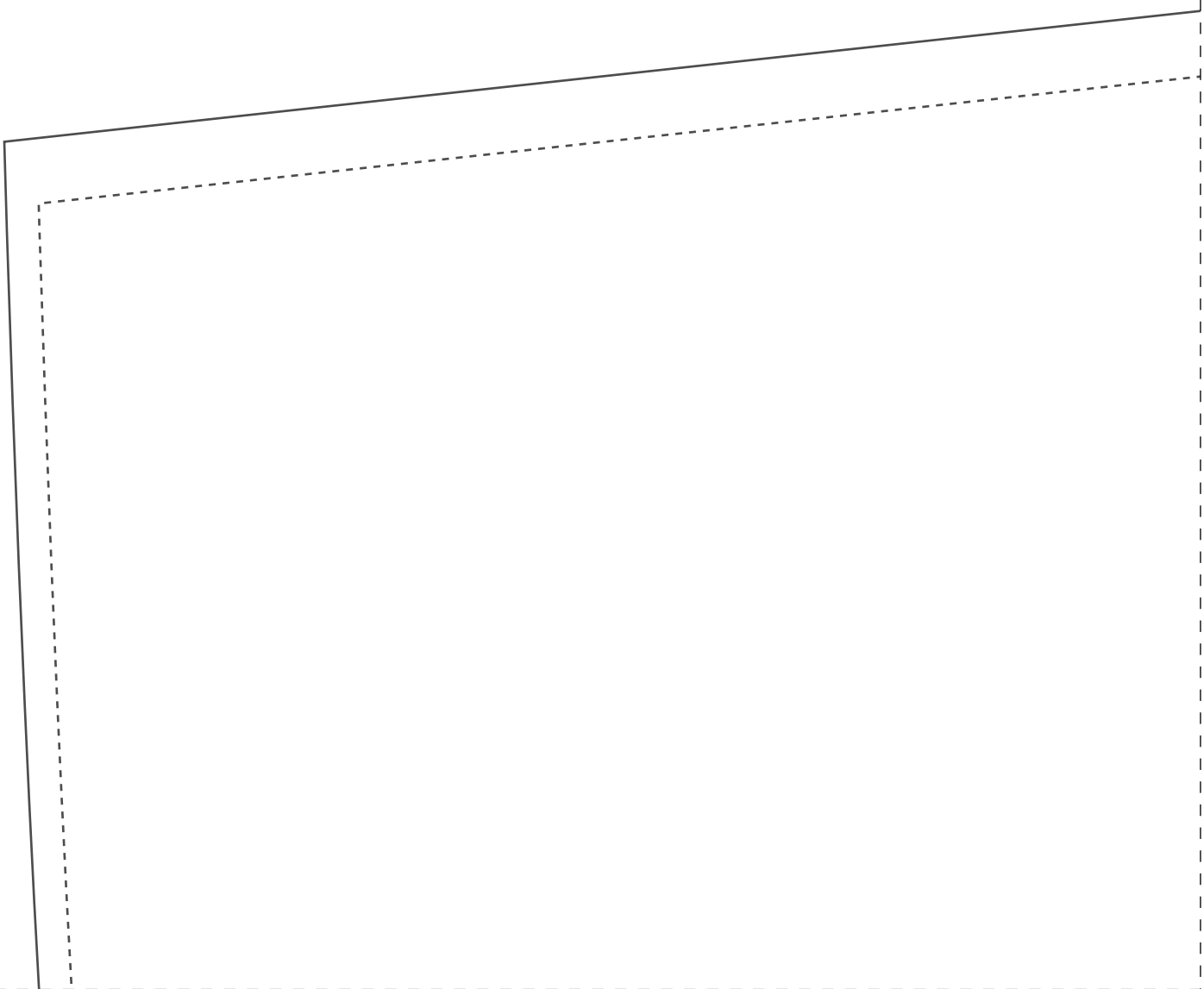
PROIBIDA REVENDA



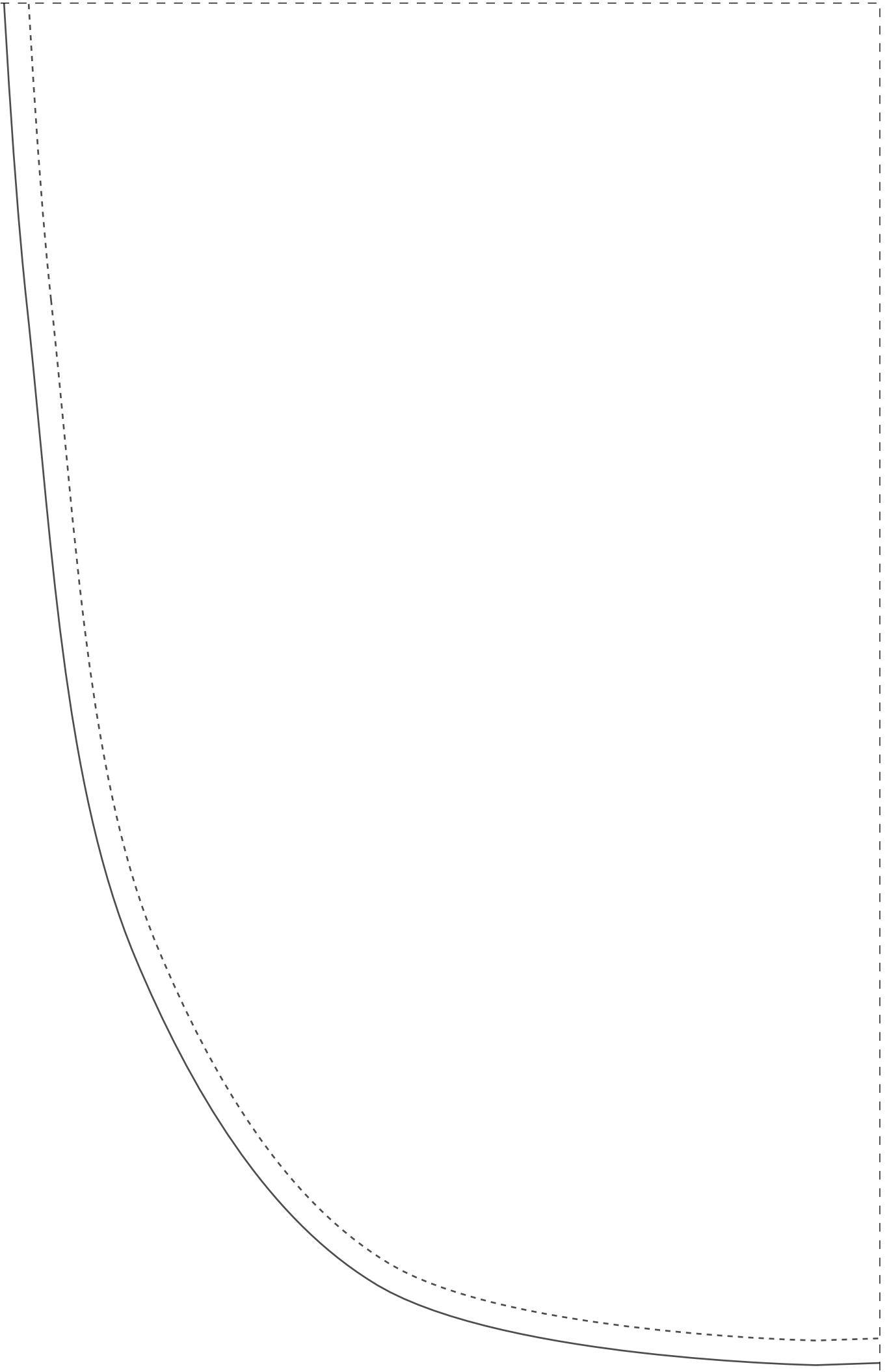
1DDDED0156 Shorts cam Transpasse  
C05  
1x  
52

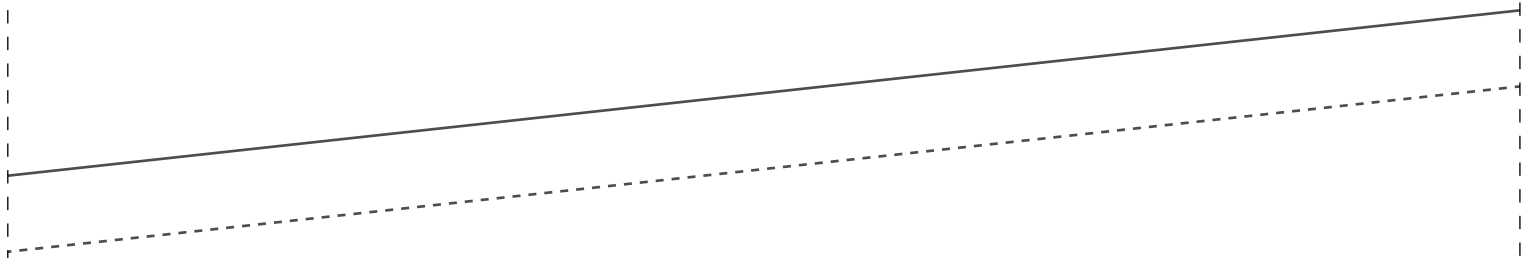






2-4





Ficha técnica

- Tecido plano 1,4m largura
- Viscose, viscolinho ou similares
- Short transpassado na lateral
- Costure lateral costas no pique frente
- Cortar elastico 3,5cm a 4 cm largura:  
36=74cm, 38=76cm, 40= 78cm, 42=80cm  
44=82cm, 46=84cm, 48=86cm, 50=88cm,  
52=90cm, 54=92cm
- 1,2m para todos os tamanhos

IDDED CD156 Shorts com Transpasse

Costa

2X

52



