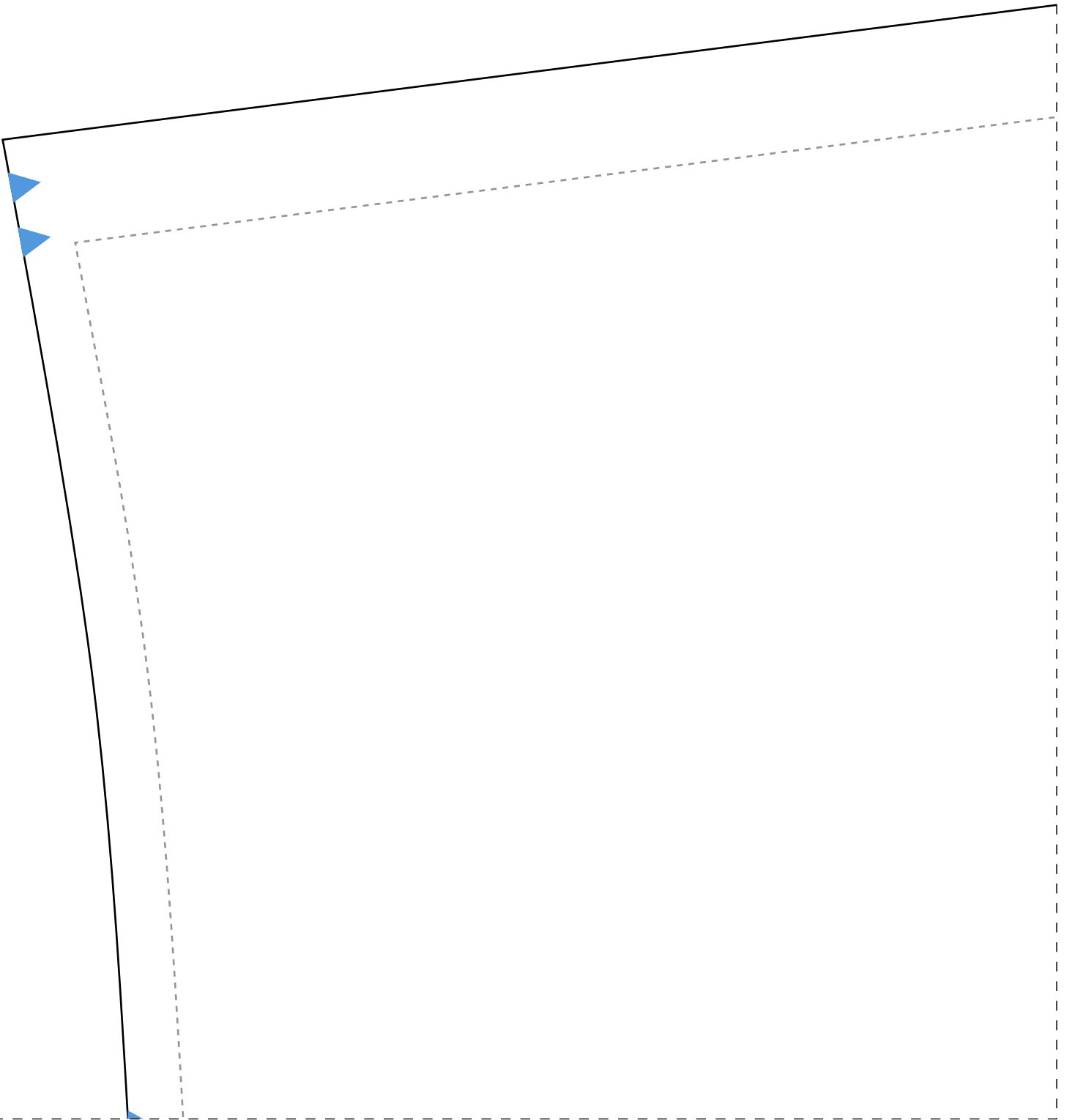
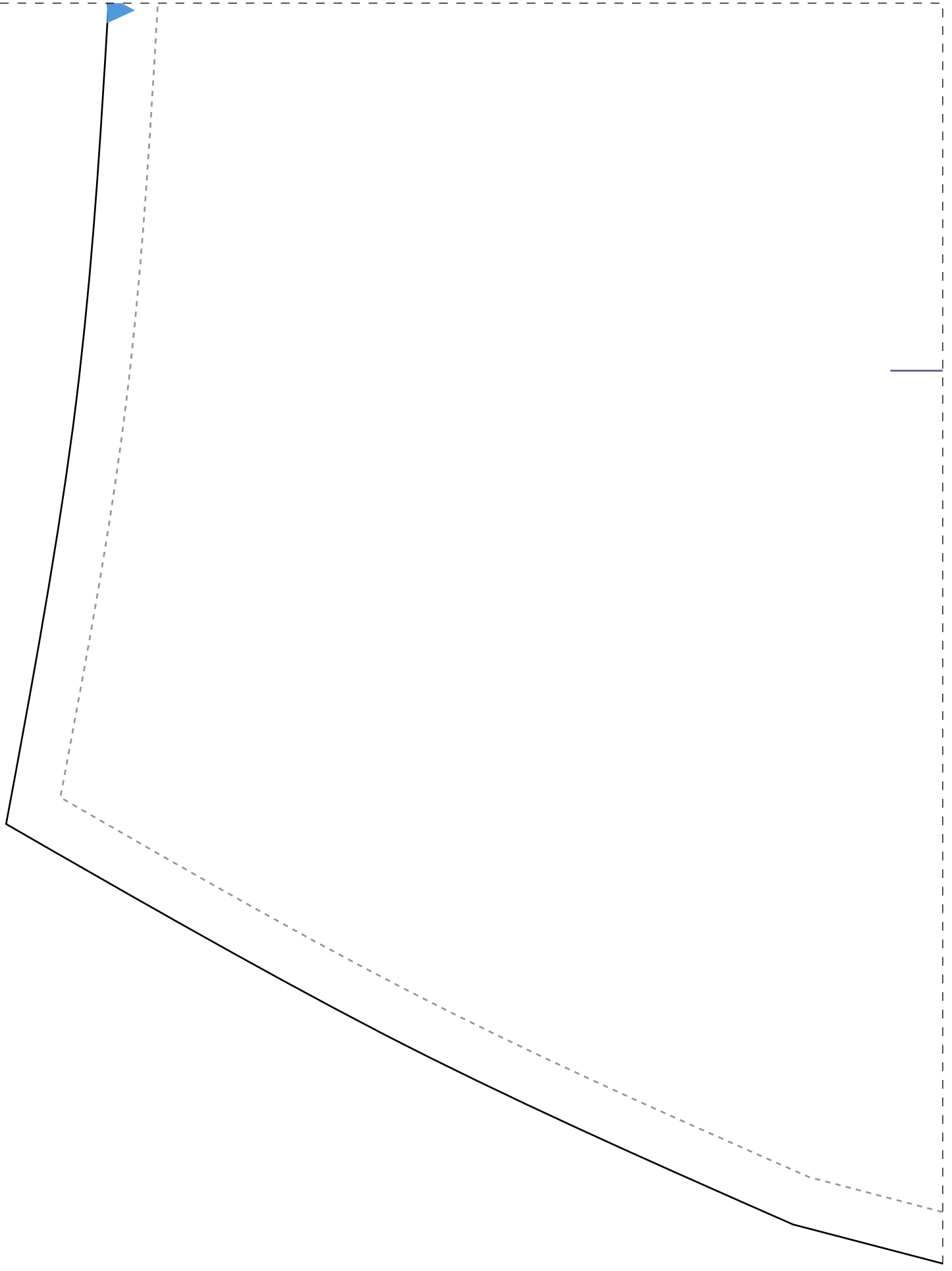


1-1



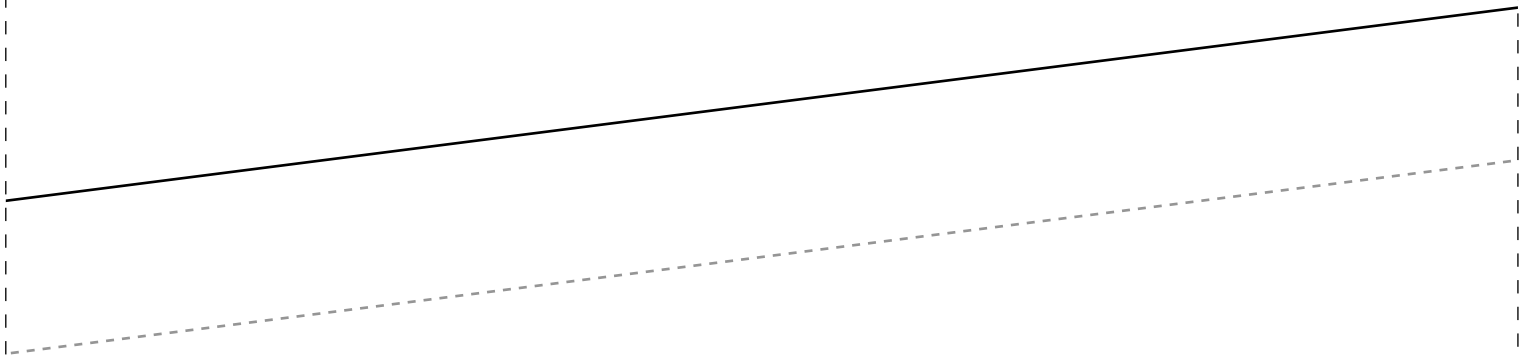
2-1



3-1

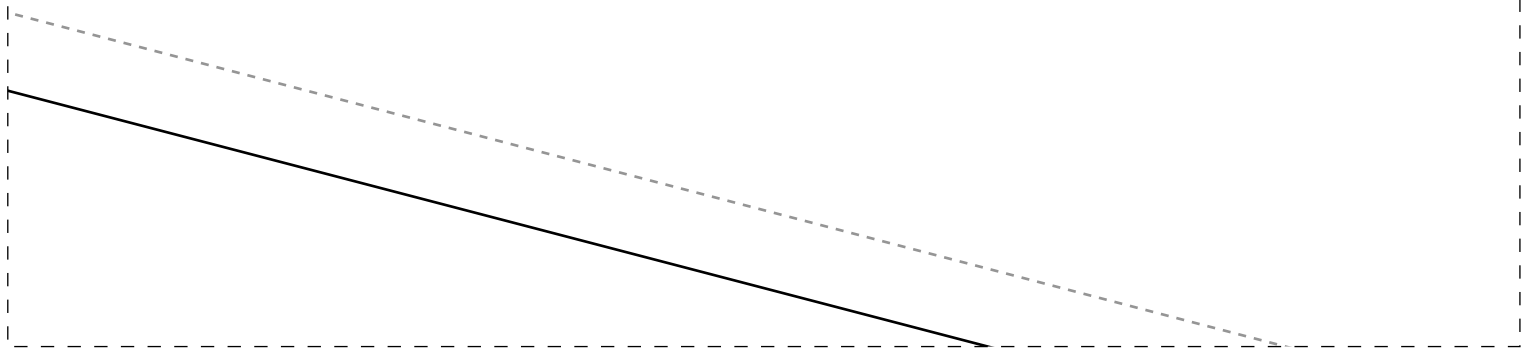
4cm

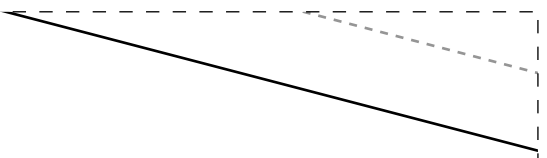
1-2

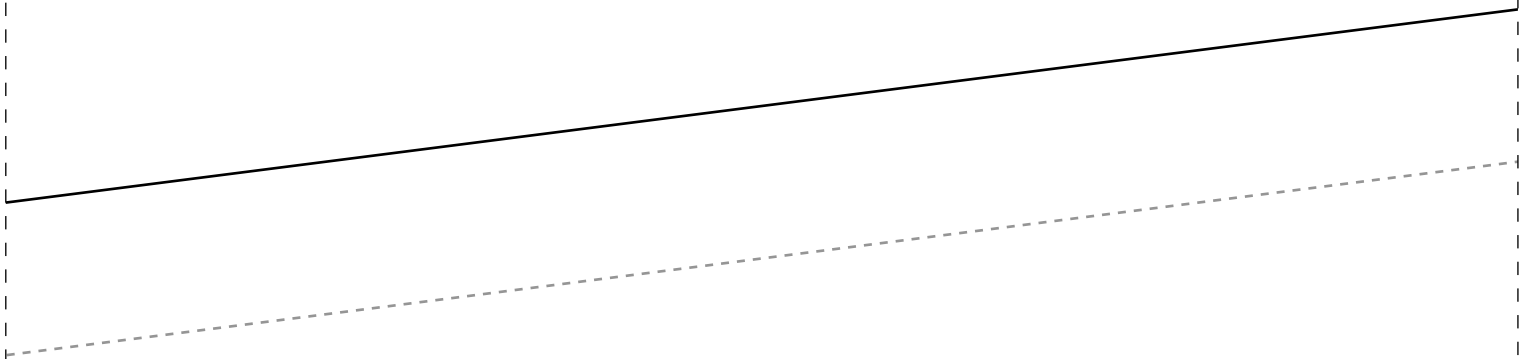


IDD03

Instituto I
Semana CMC
Vestido Env







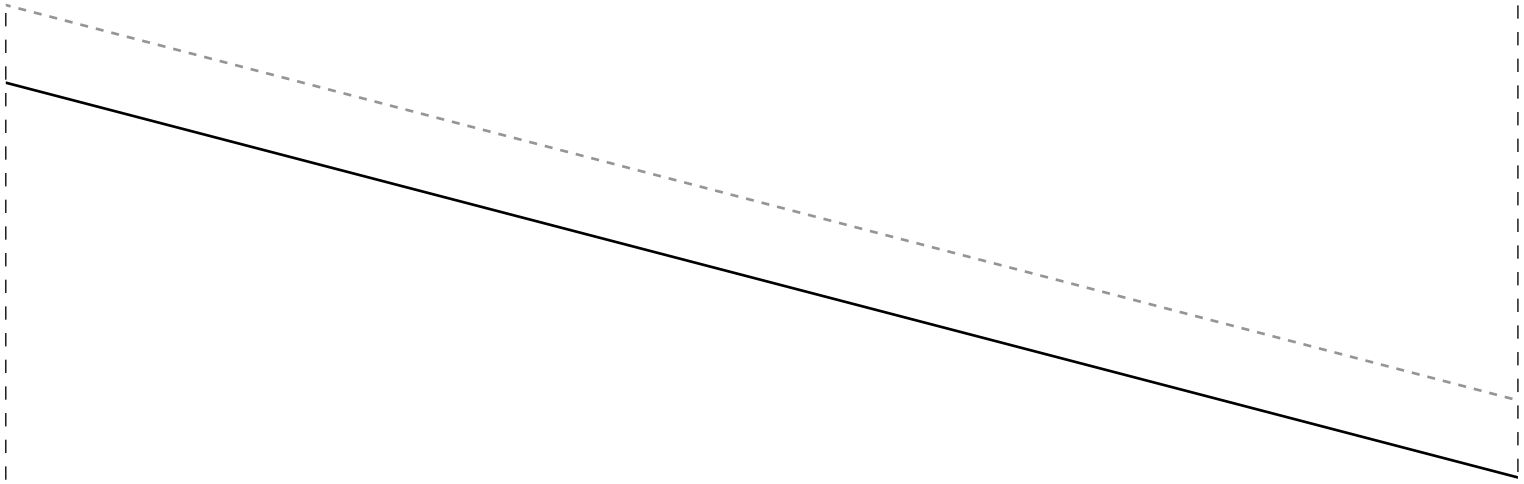
Ficha técnica
Tecido pl
-tamanhos
-tamanhos
-tamanhos
-tamanhos
-tamanhos
-3m de vié
Decote e c
Barra e bo
Cordinha p
ou comprac
-tamanhos
-tamanhos
-tamanhos
-tamanhos
-tamanhos

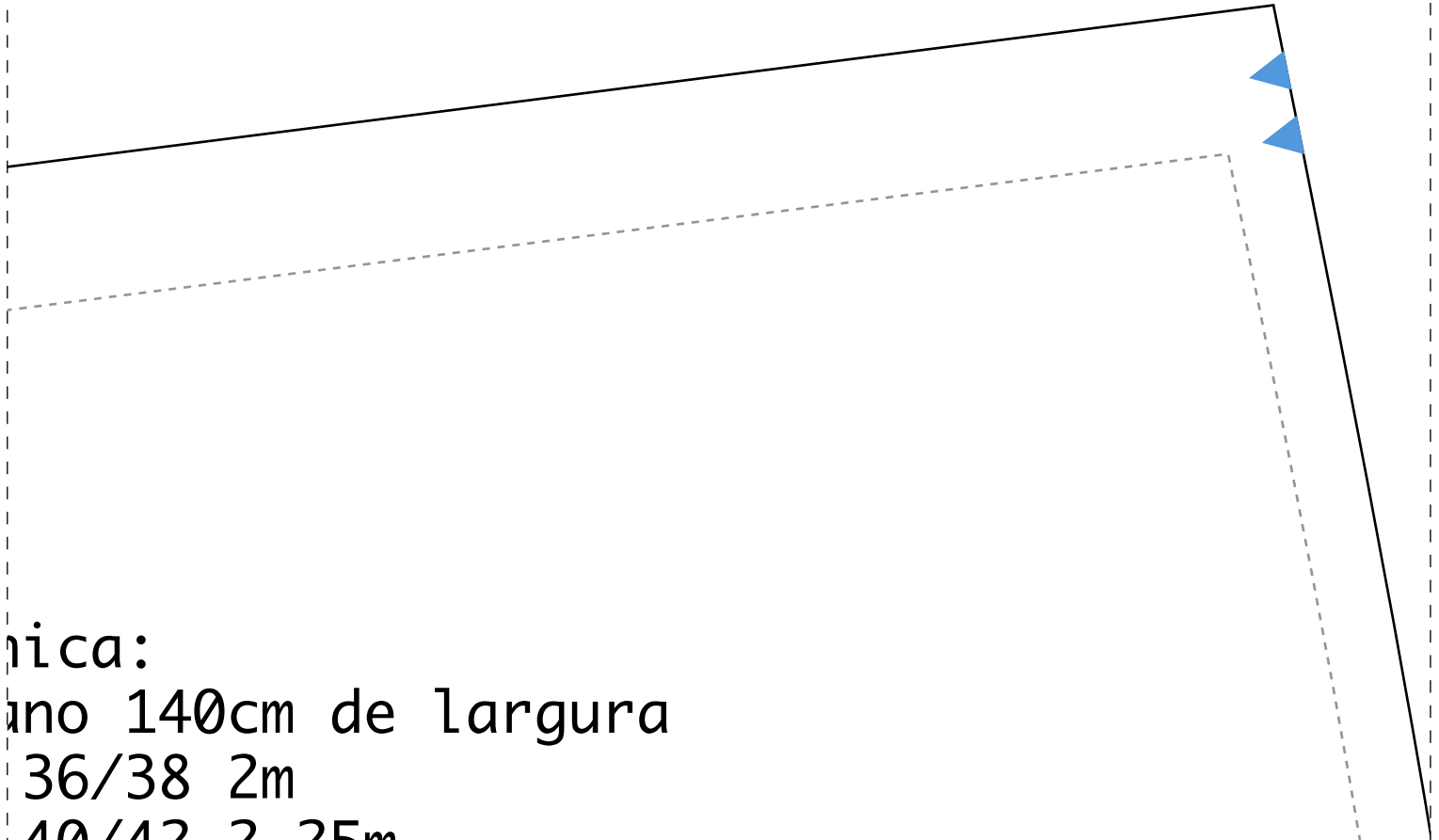
FRONTE 2X-36

Diana Demarchi

velope

3-3





ônica:

vão 140cm de largura

36/38 2m

40/42 2,25m

44/46 3,15m

48/50 3,30m

52/54 3,80m

es para acabamentos

casas com viés rebatido na reta

abado com bainha lenço

para a cintura (pode ser de viés

da pronta):

36/38 uma de 90cm e outra de 50cm

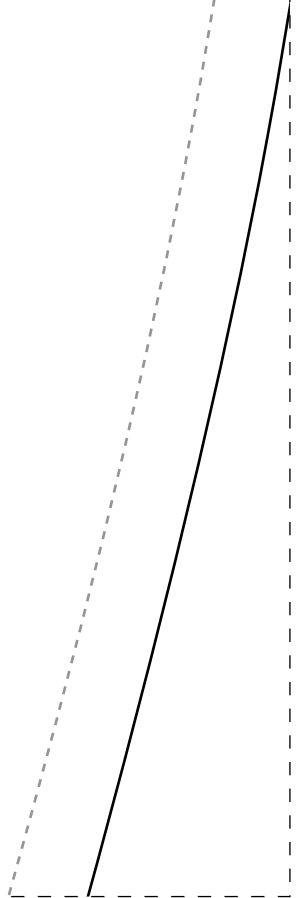
40/42 uma de 95cm e outra de 55cm

44/46 uma de 100cm e outra de 60cm

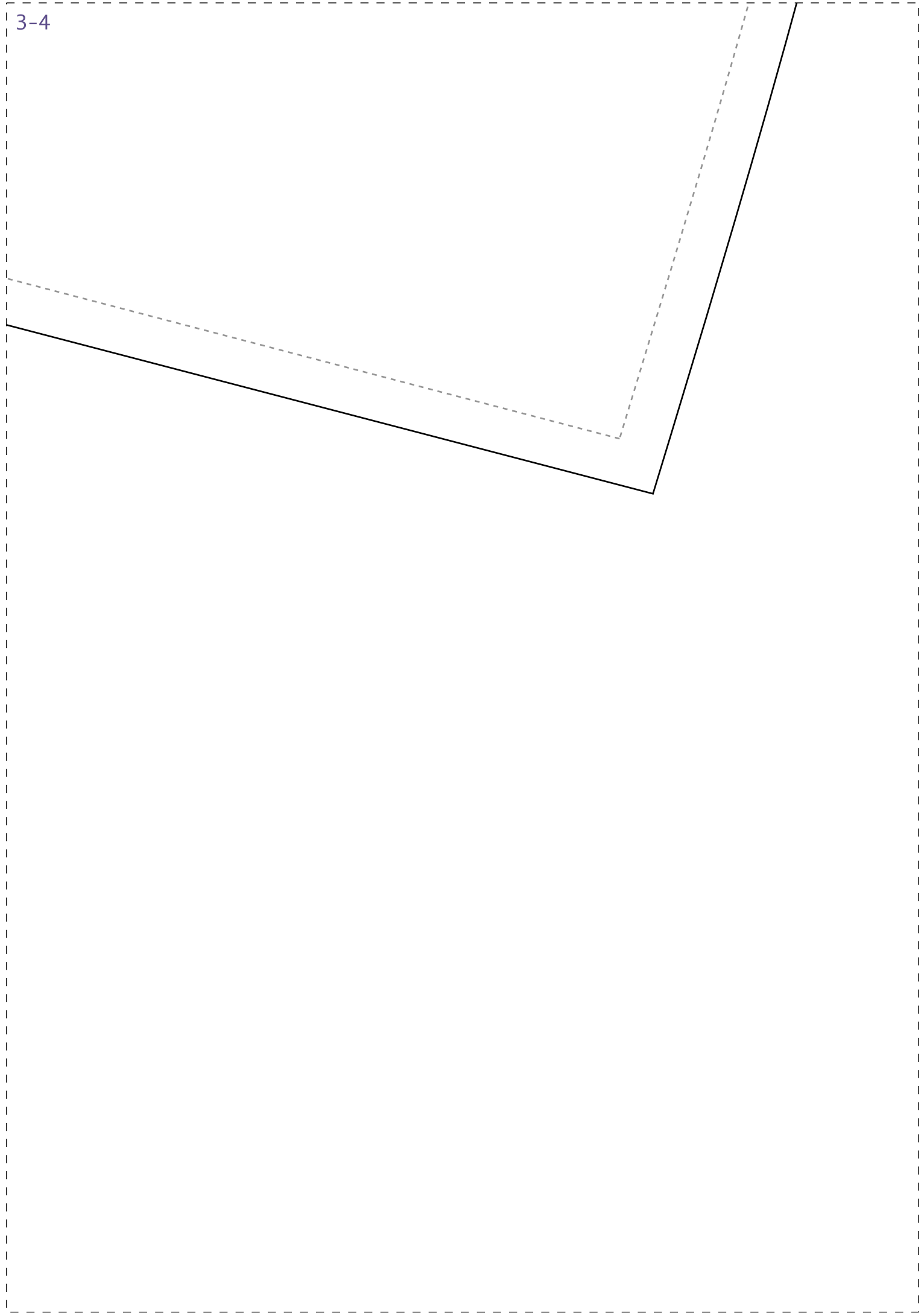
48/50 uma de 105cm e outra de 65cm

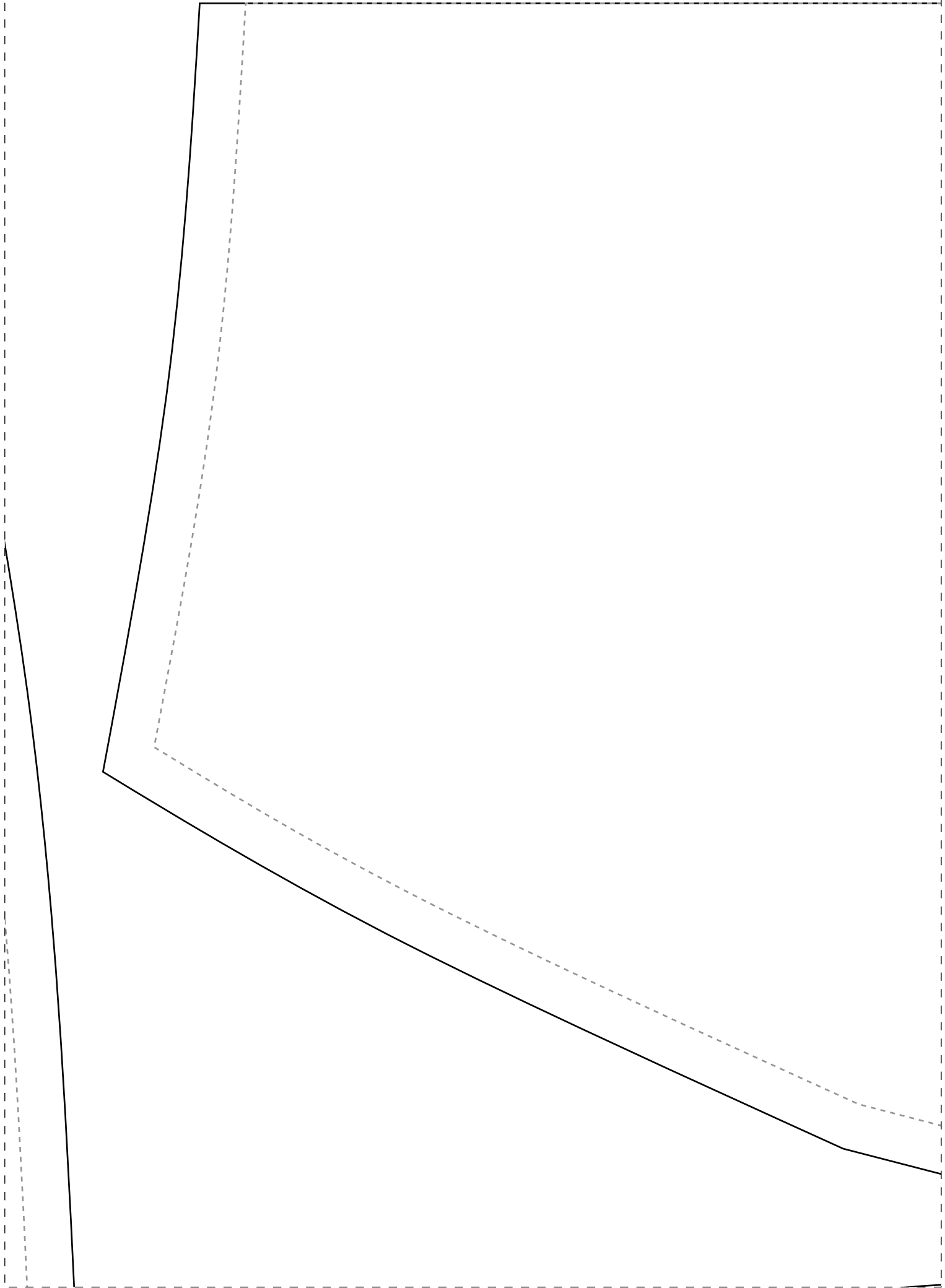
52/54 uma de 110cm e outra de 70cm

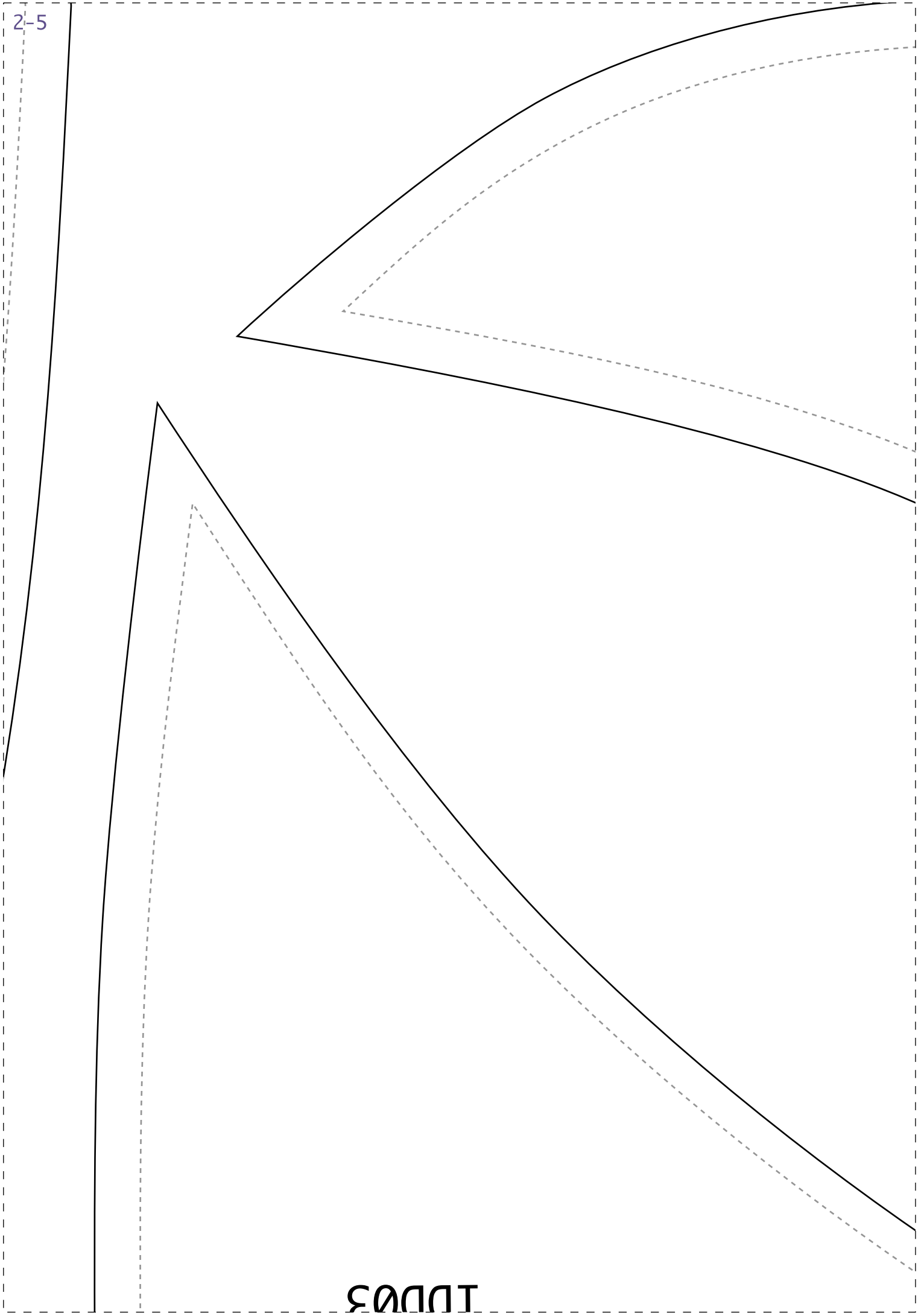
2-4



3-4

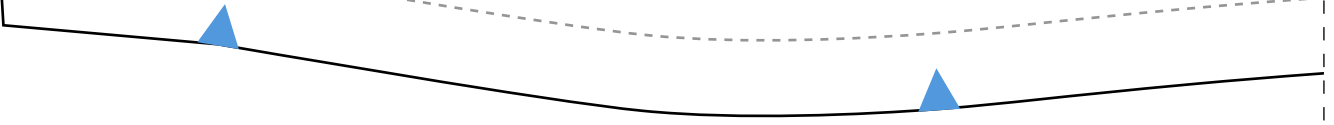






3-5

FRENTE 2X-36



IDD03

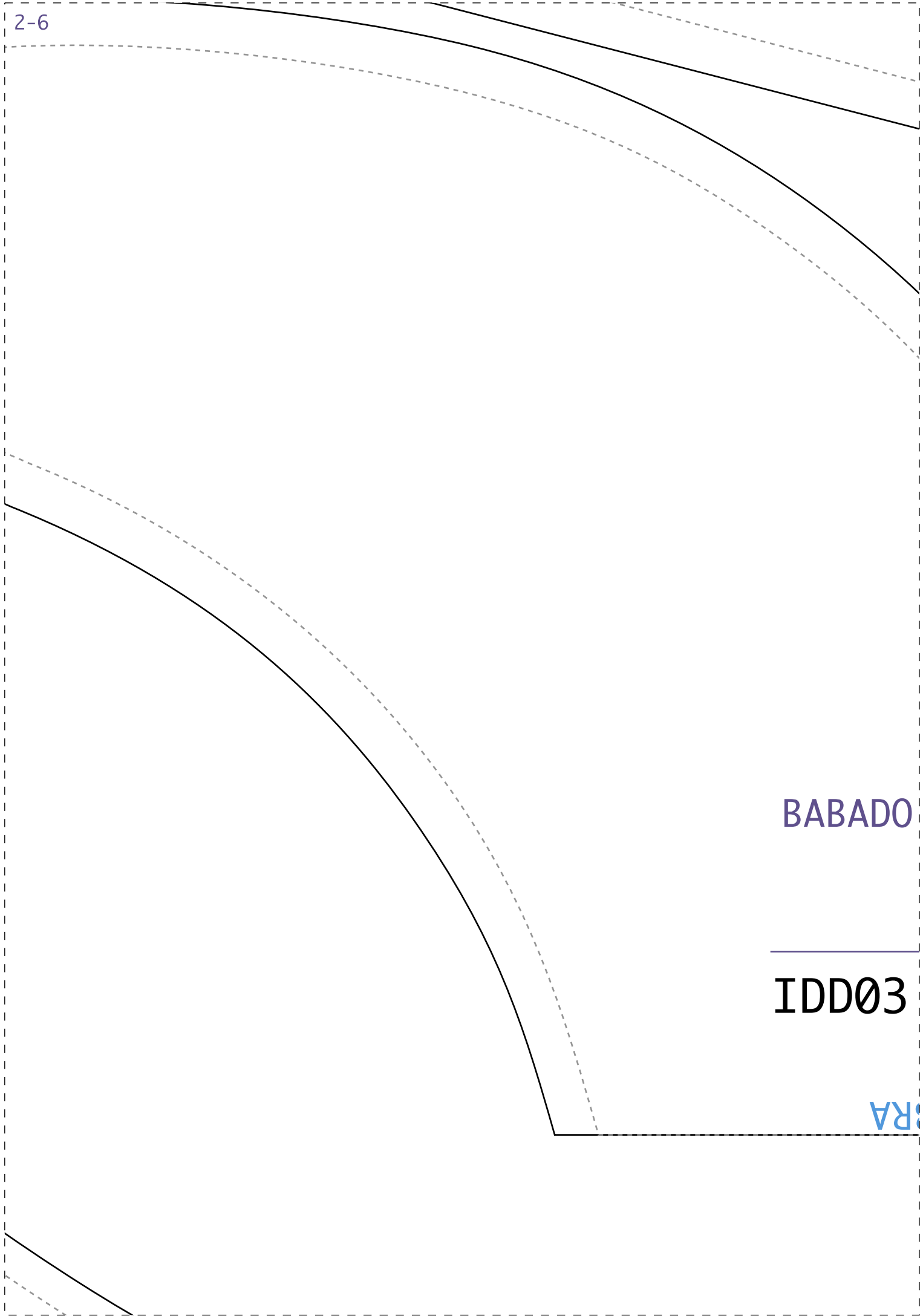
Inst
Sema
Vest

2-6

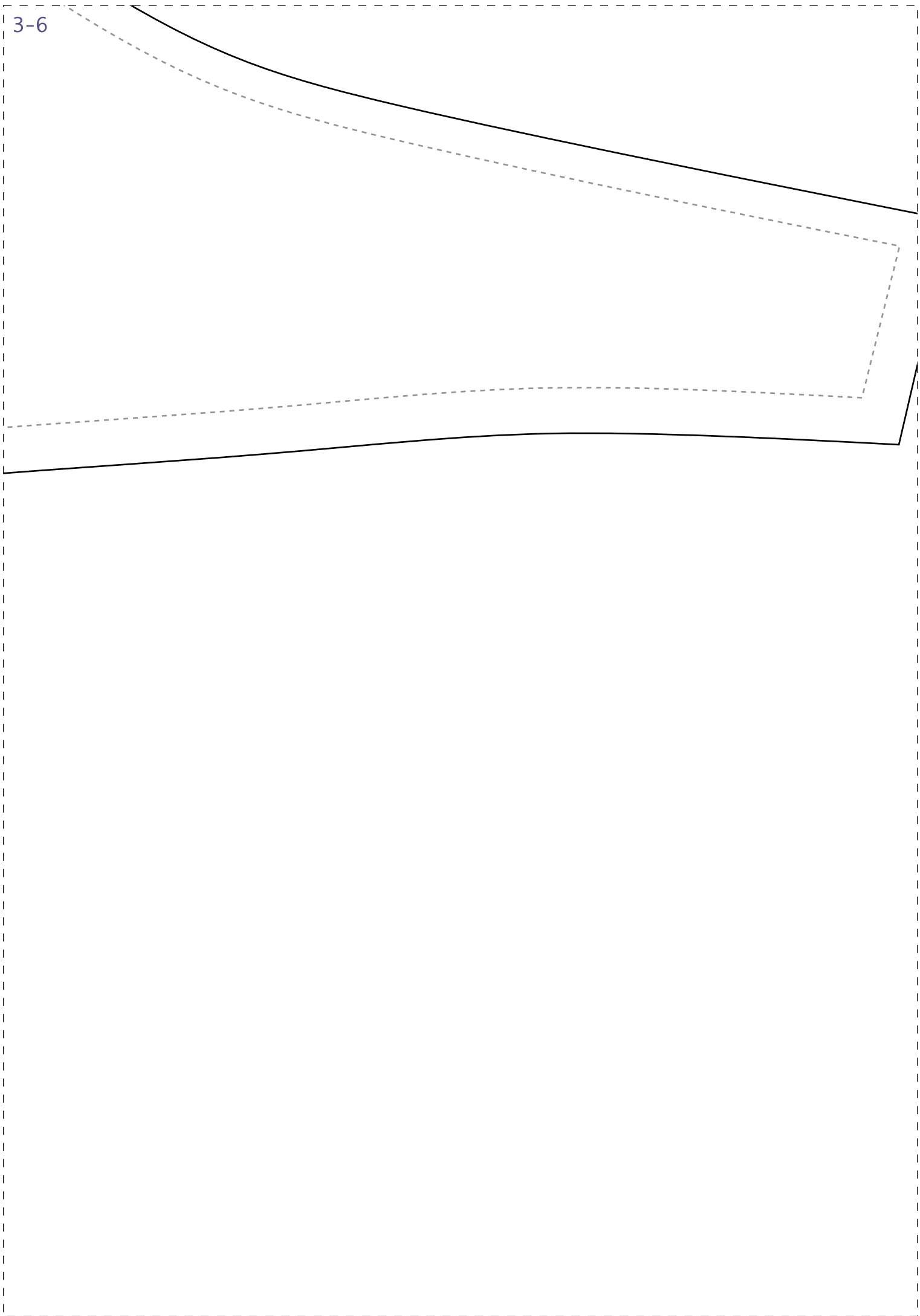
BABADO

IDD03

RA



3-6

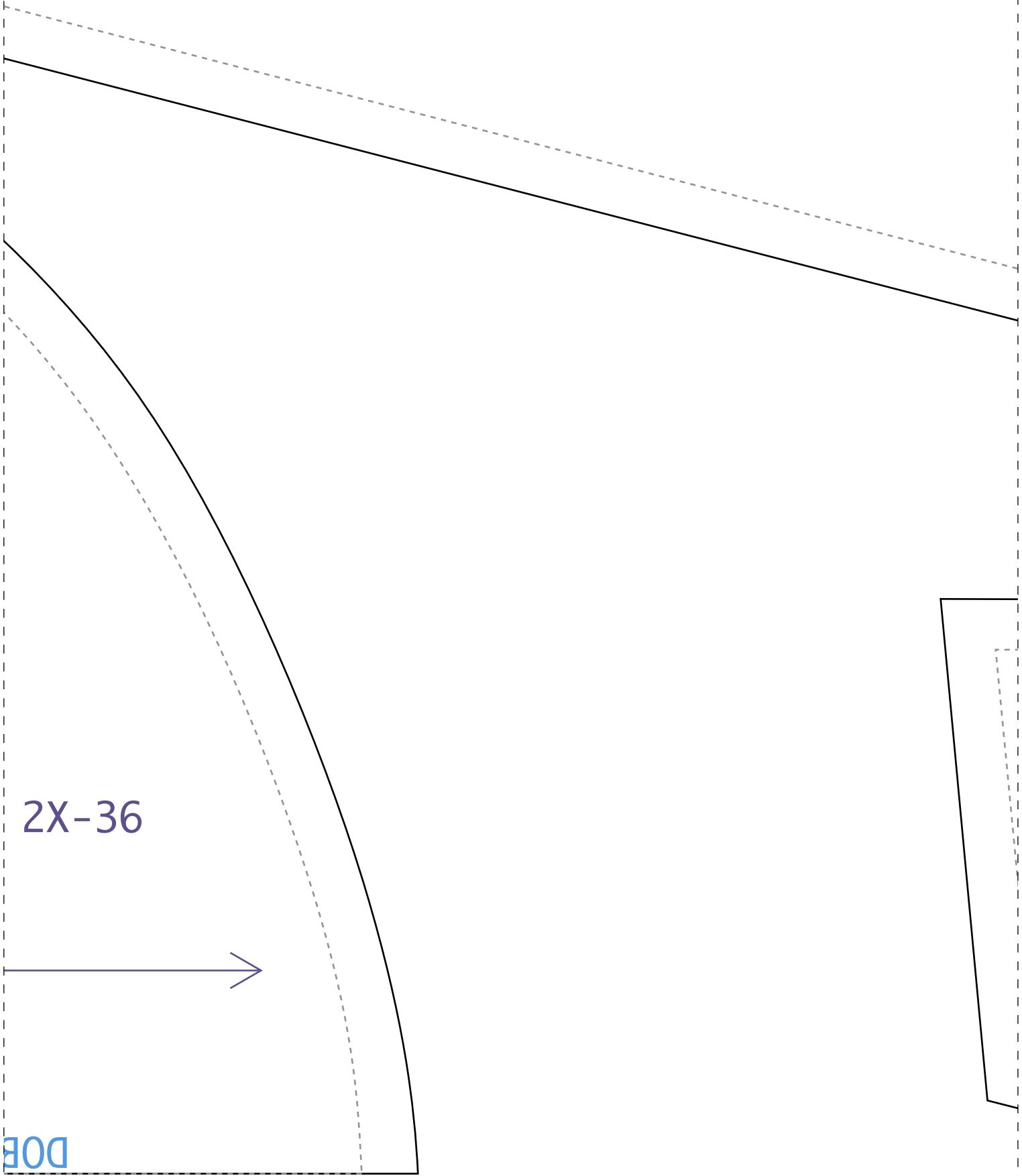


DOBRA

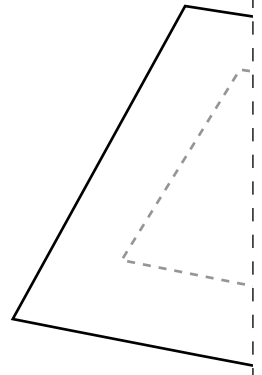
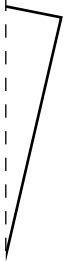
SAIA COSTAS 1X-36

Instituto Diana Demarchi
na CMC
ido Envelope

2-7

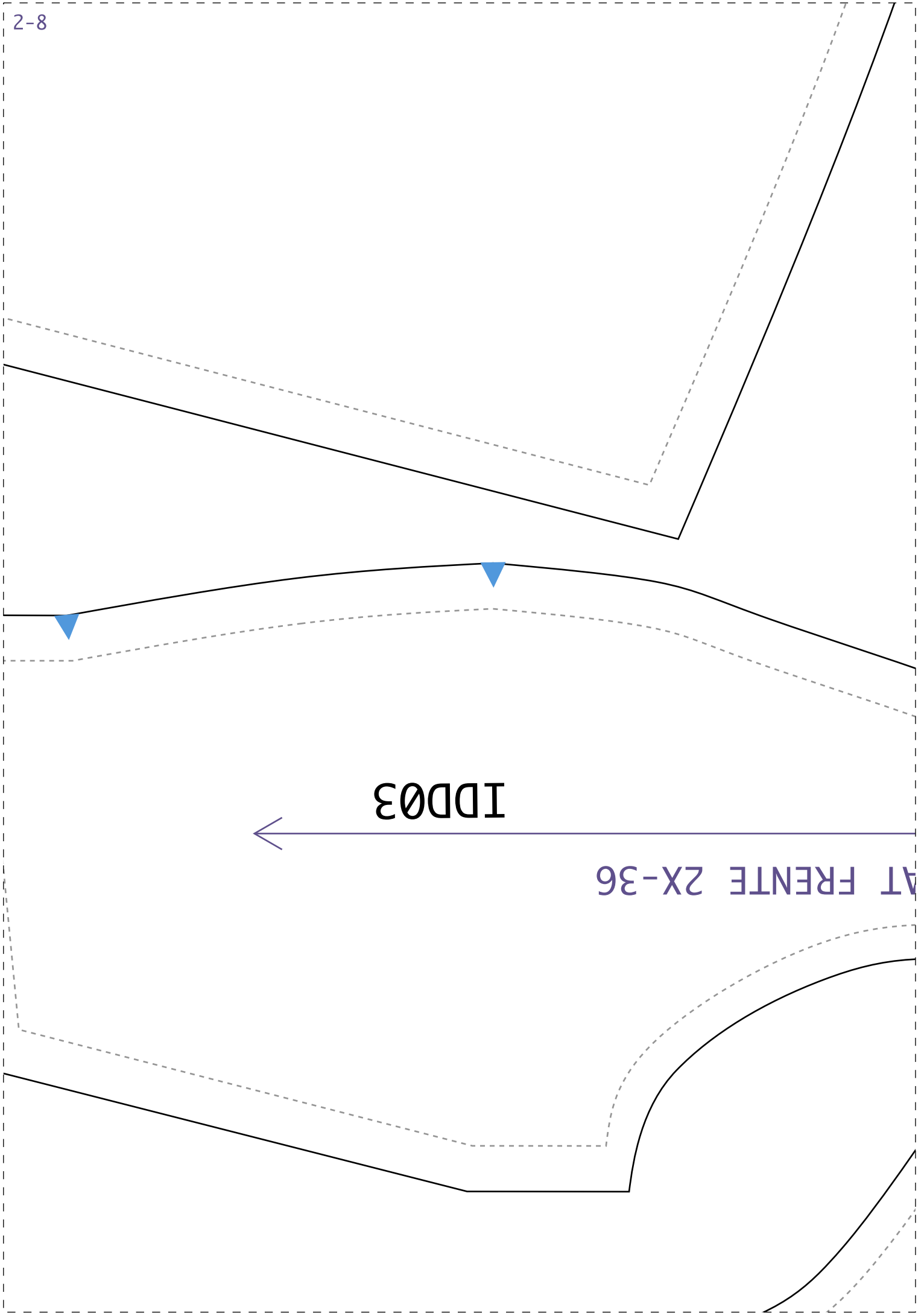


3-7





2-8

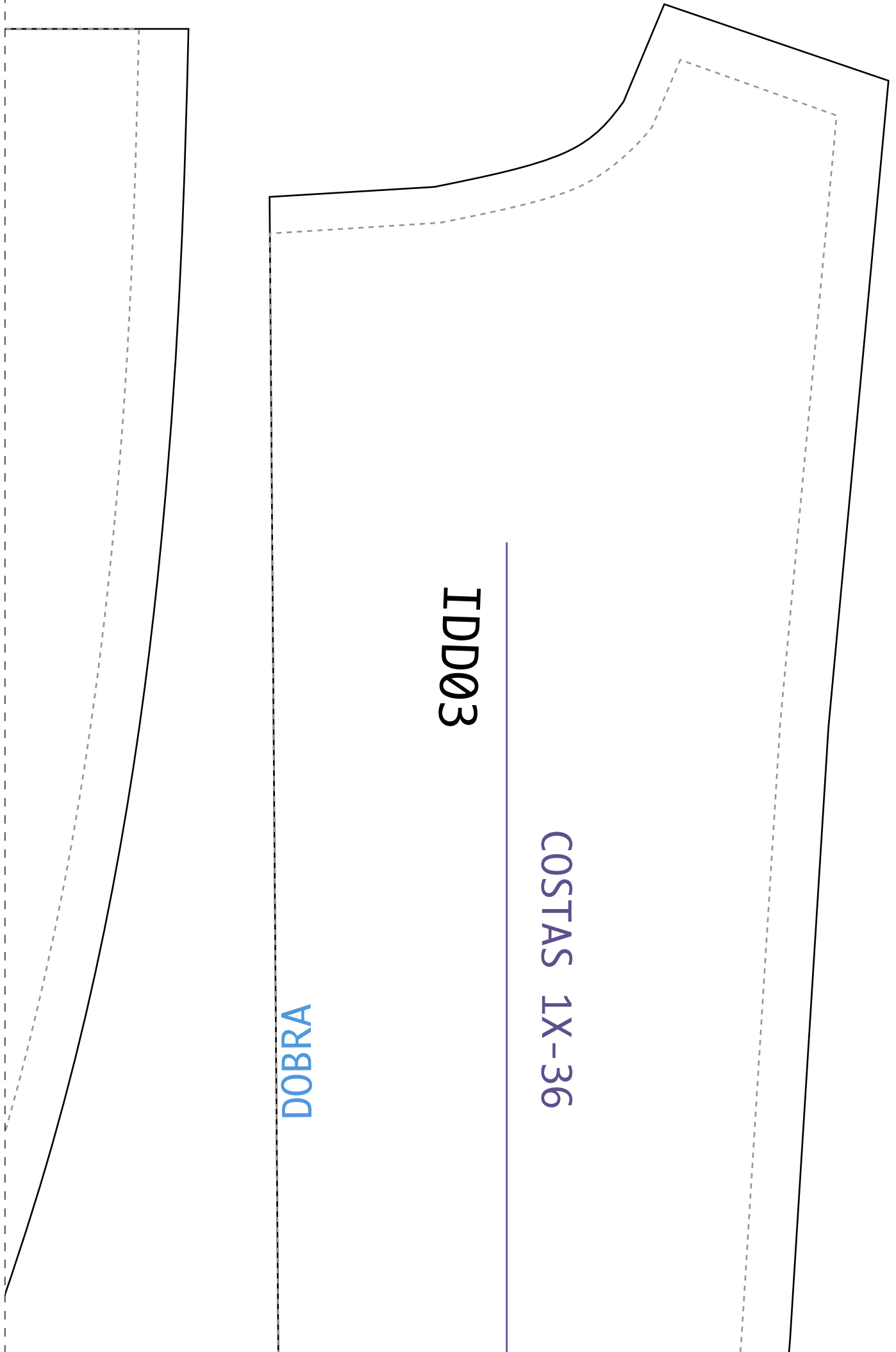


IDDD3

AT FRENTE 2X-36

3-8

IDE

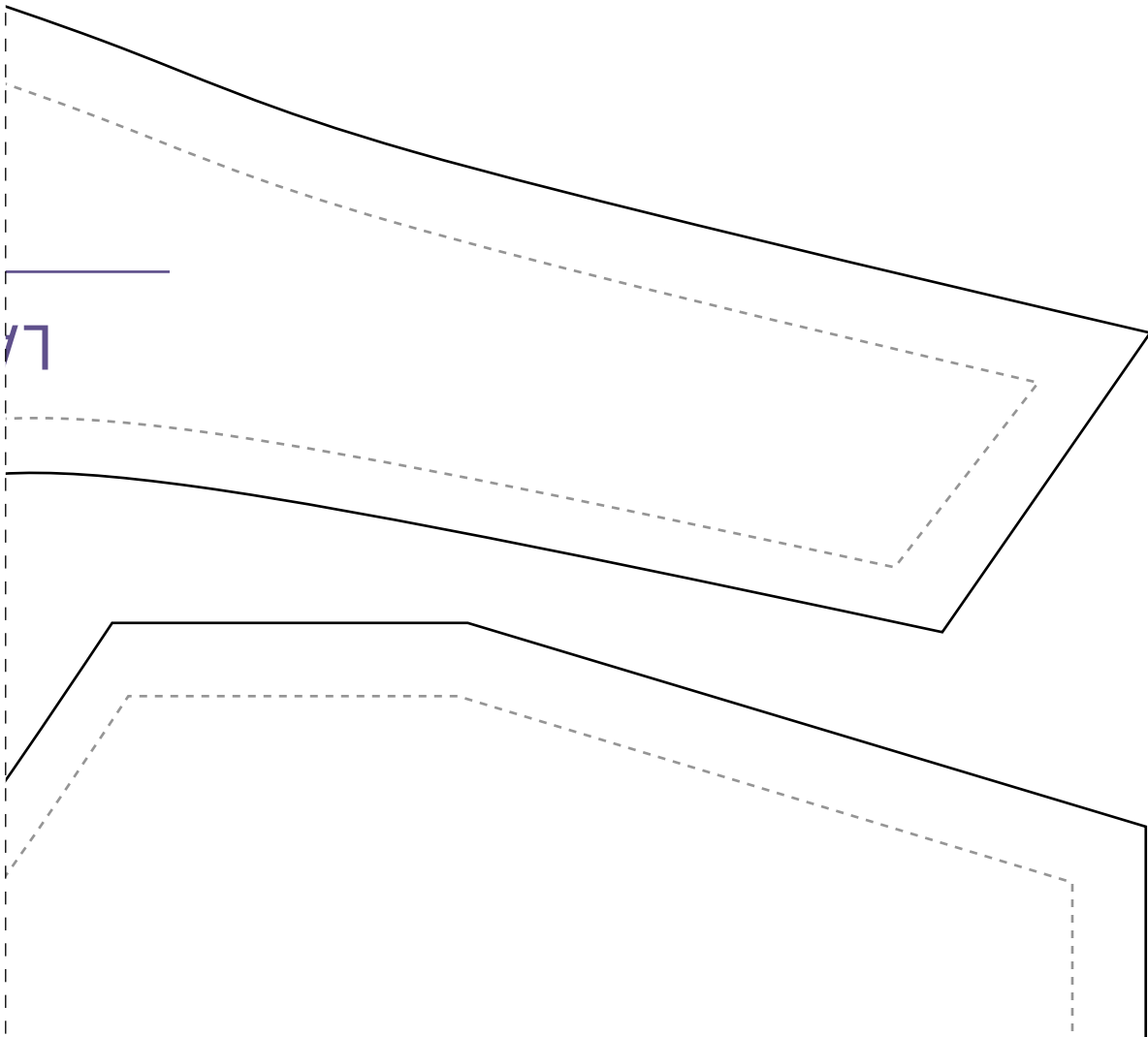
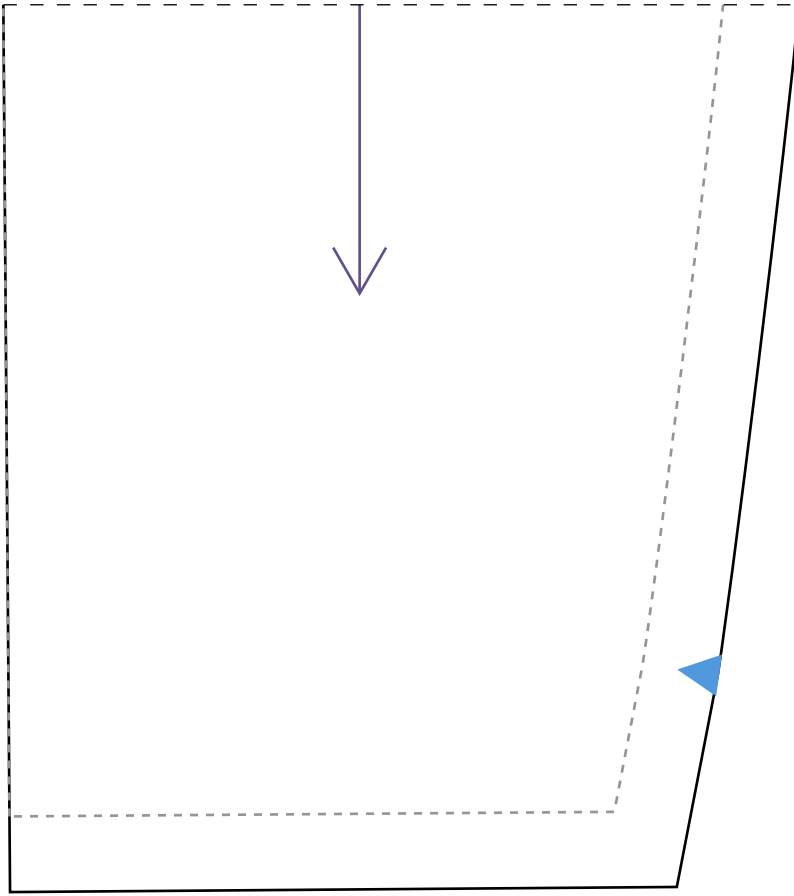


DOBRA

IDD03

COSTAS 1X-36

2-9



77

3-9

LAT COSTAS 2X-36

003

