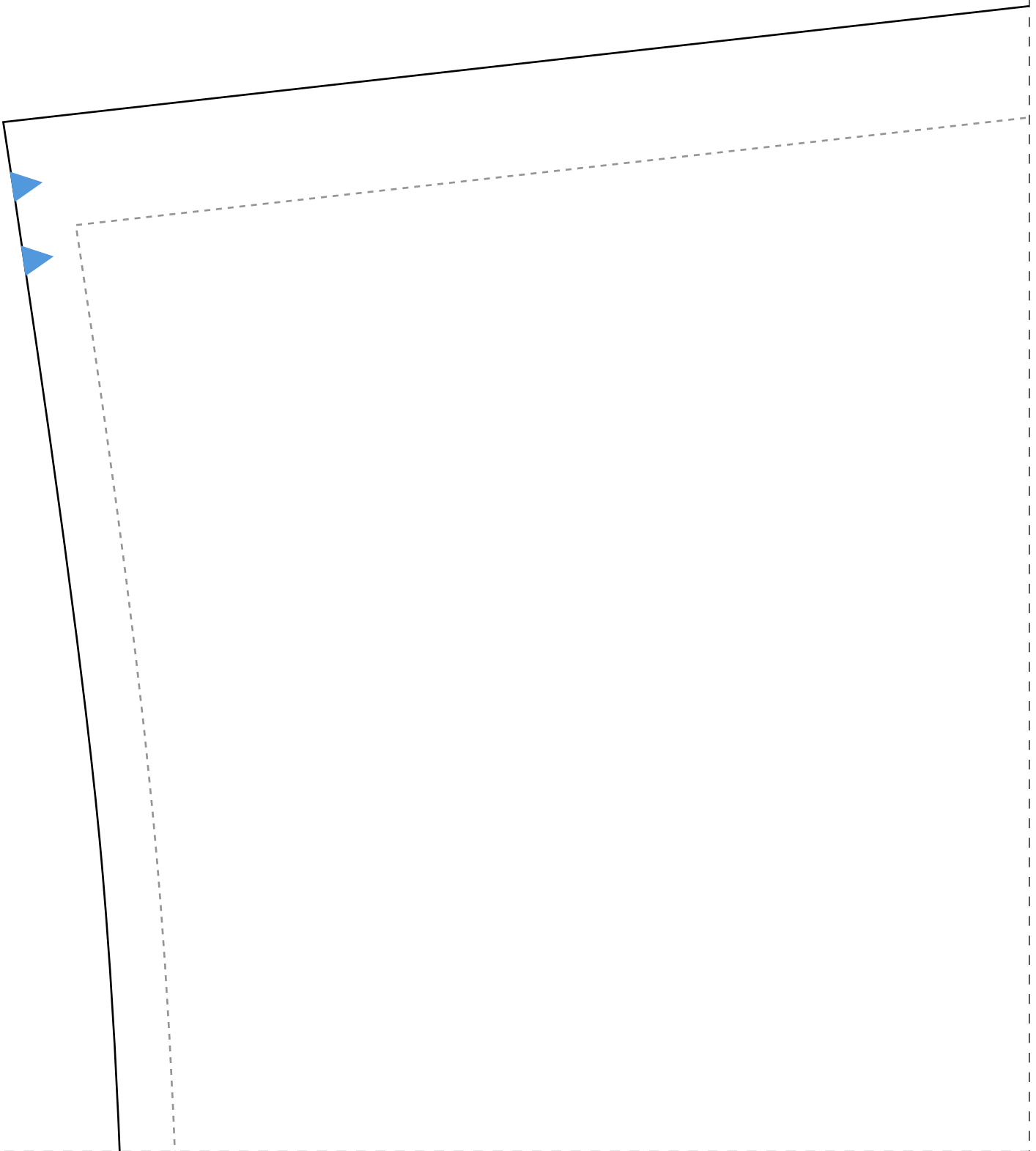
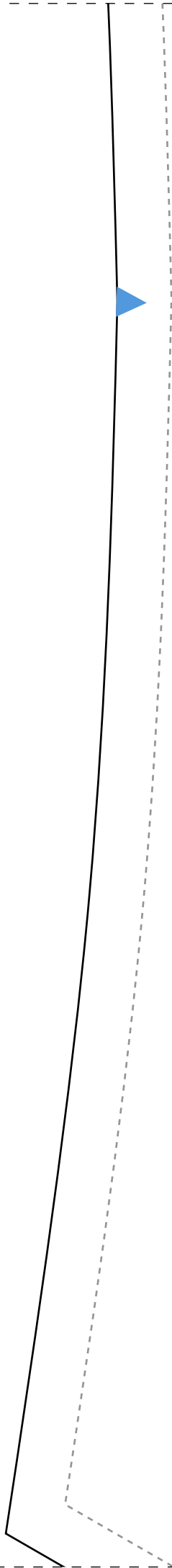


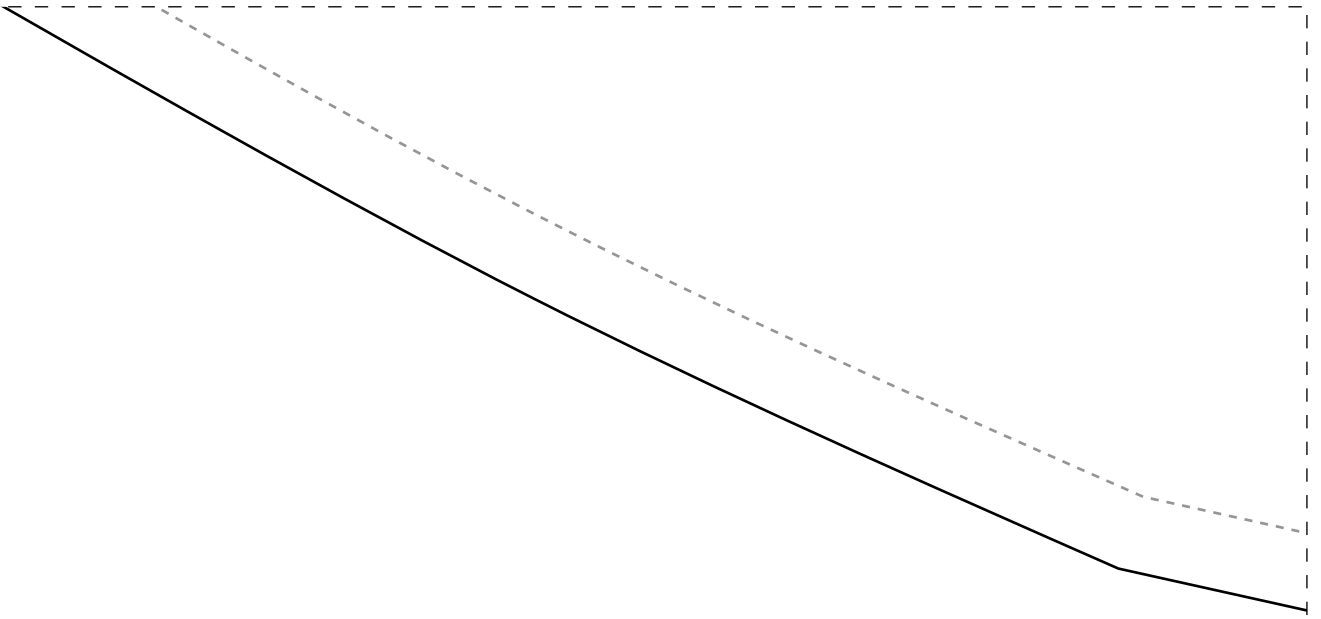
1-1



2-1

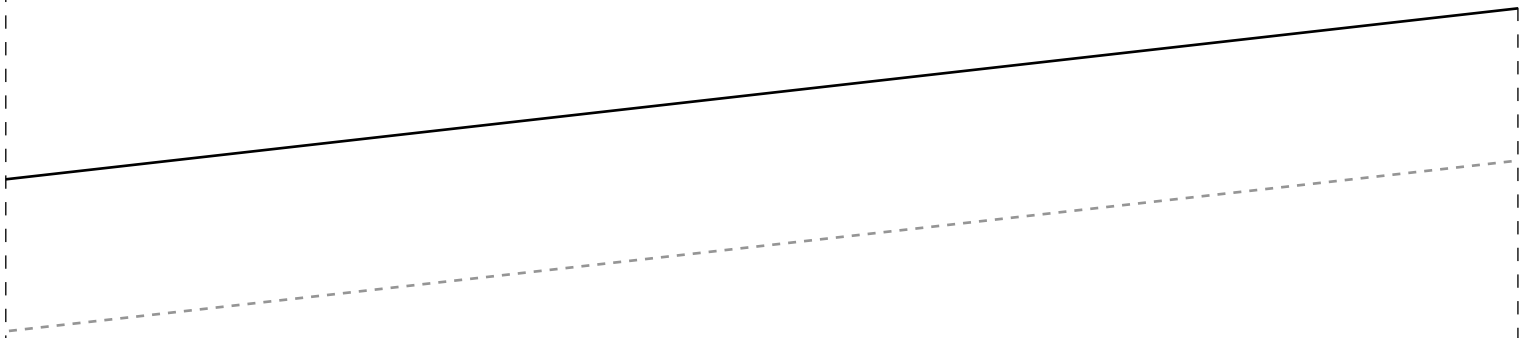


3-1



4cm

1-2

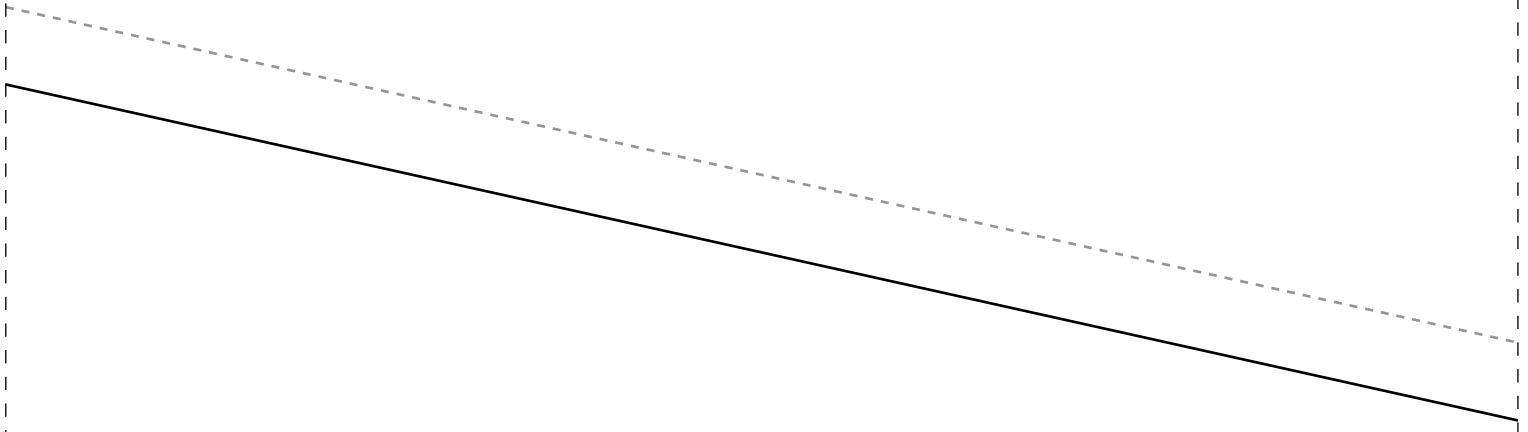


---

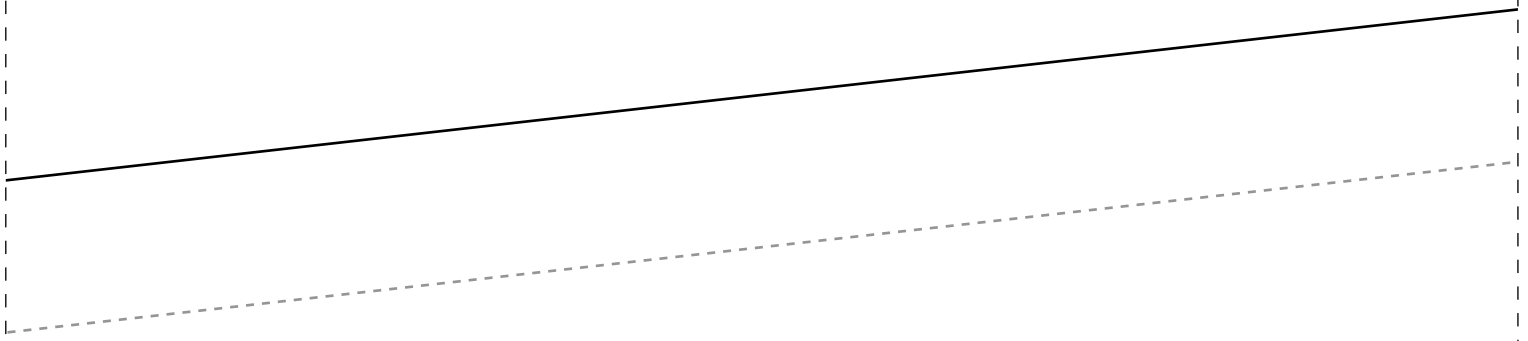
IDD03

Inst  
Semo  
Vest

3-2



1-3

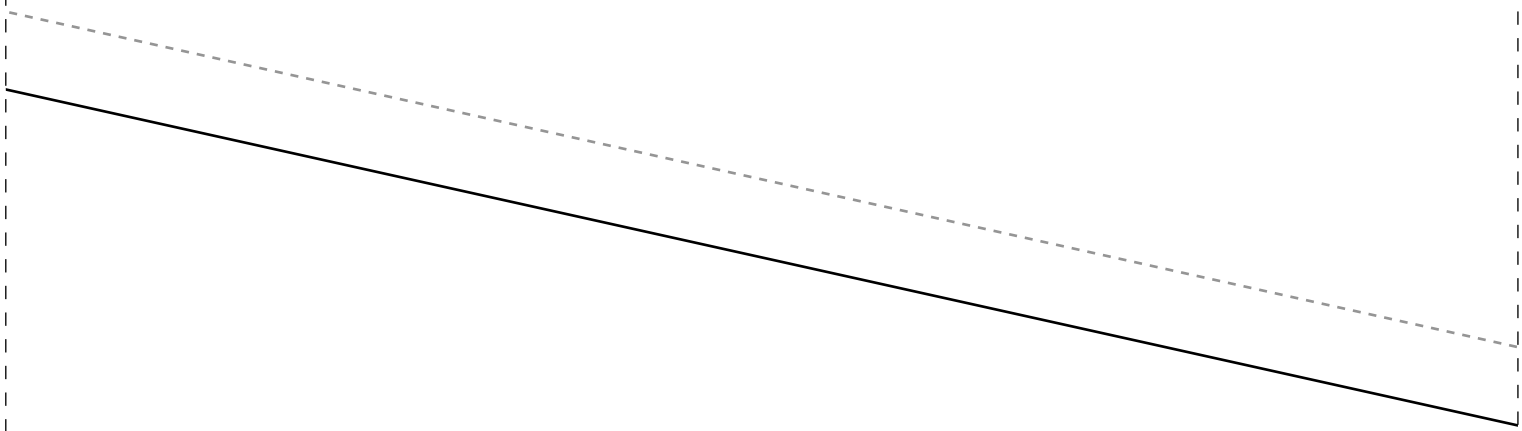


SAIA FRENTE 2X-46

---

Instituto Diana Demarchi  
ana CMC  
tido Envelope





### Ficha técnica:

Tecido plano 140cm de largura

- tamanhos 36/38 2m
- tamanhos 40/42 2,25m
- tamanhos 44/46 3,15m
- tamanhos 48/50 3,30m
- tamanhos 52/54 3,80m

-3m de viés para acabamentos

Decote e cavas com viés rebatido

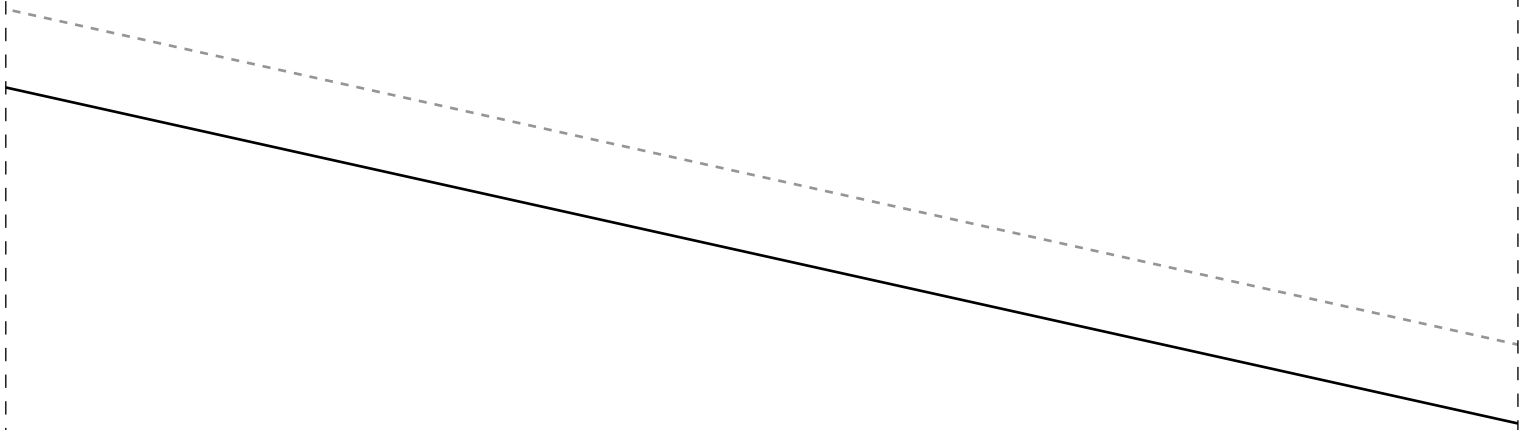
Barra e babado com bainha lenço

Cordinha para a cintura (pode ser feita ou comprada pronta):

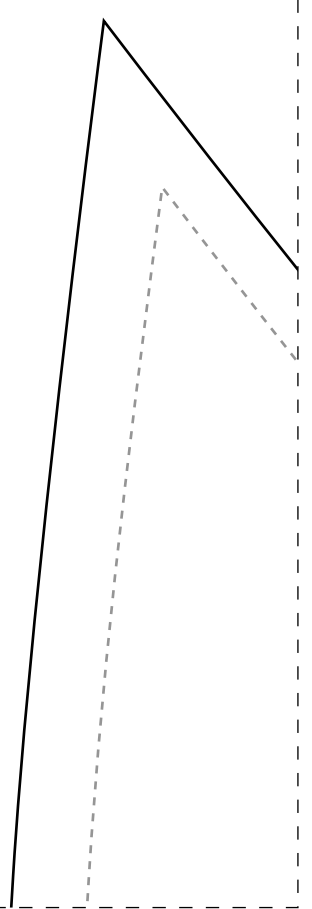
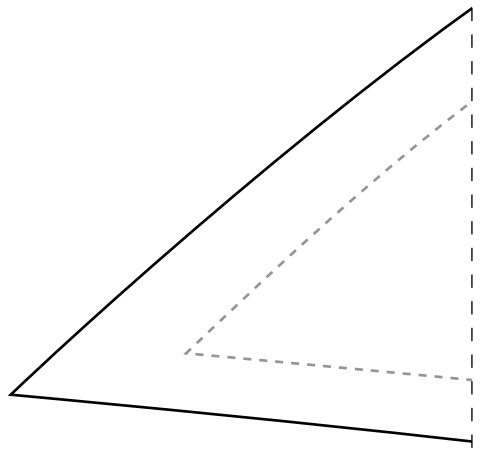
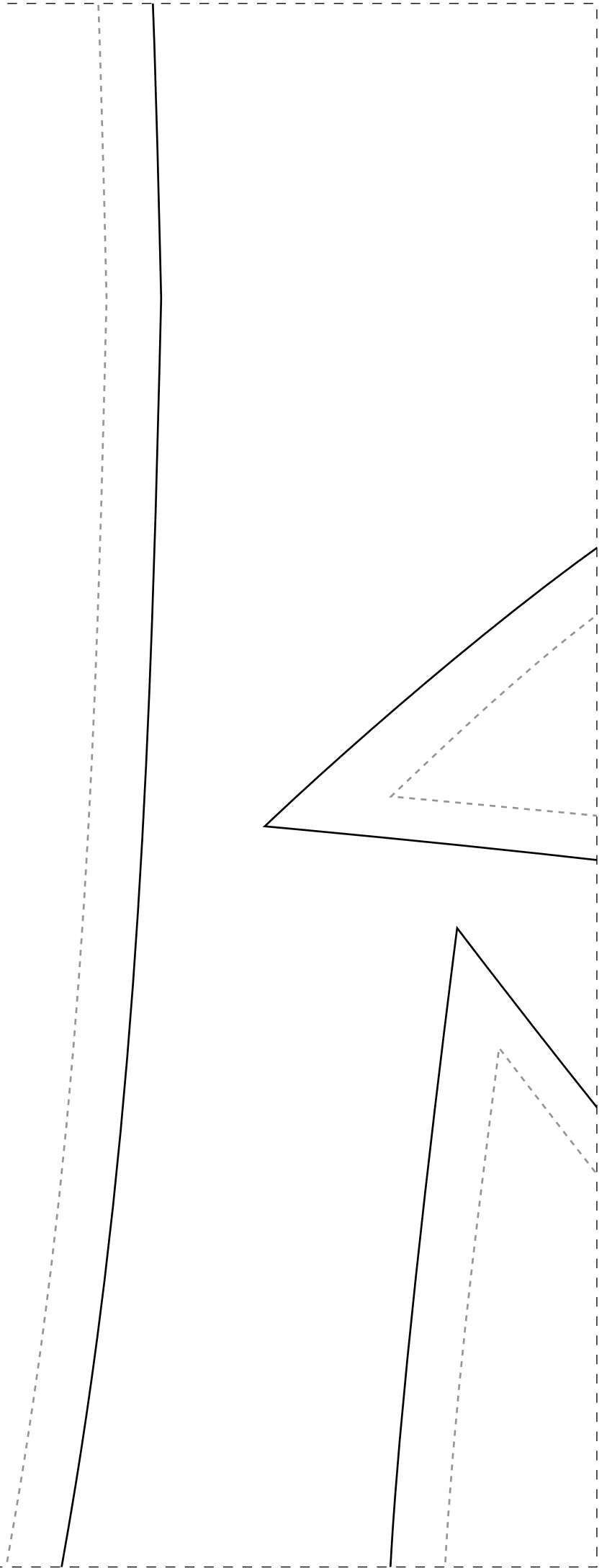
- tamanhos 36/38 uma de 90cm e o
- tamanhos 40/42 uma de 95cm e o
- tamanhos 44/46 uma de 100cm e o
- tamanhos 48/50 uma de 105cm e o
- tamanhos 52/54 uma de 110cm e o

2-4

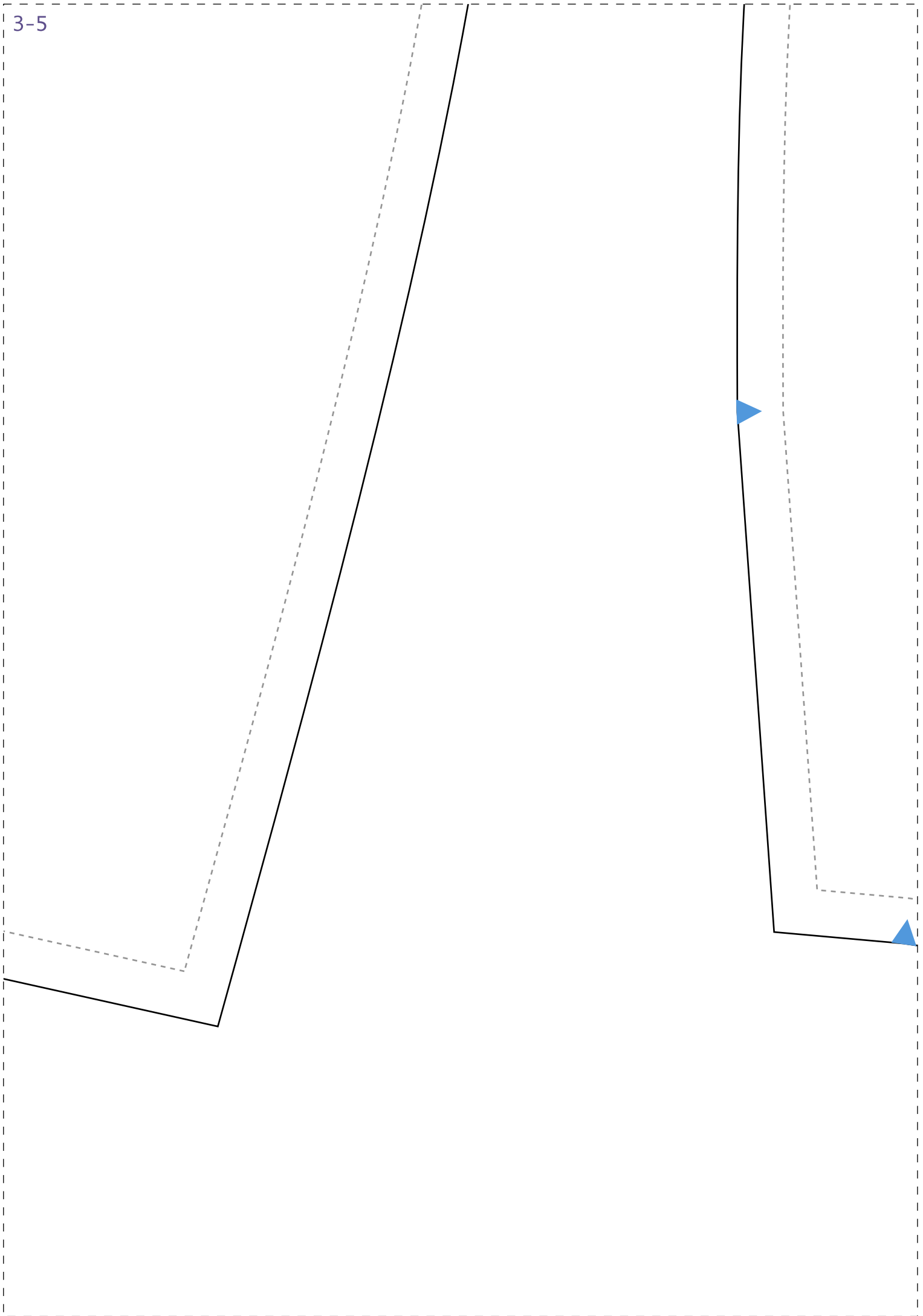


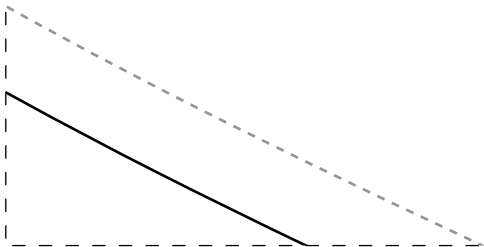




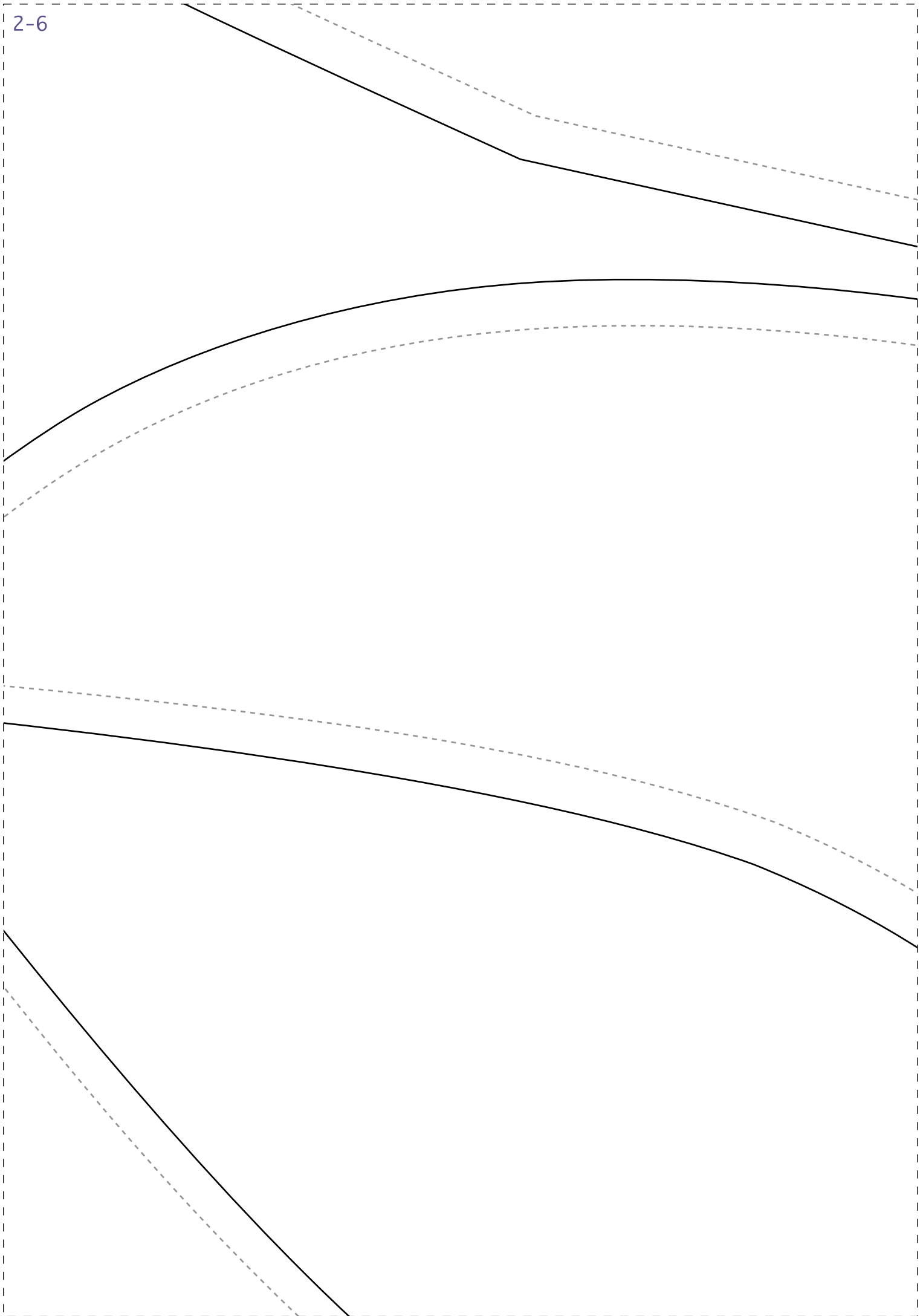


3-5









3-6

IDD03



FRENTE 2X-46

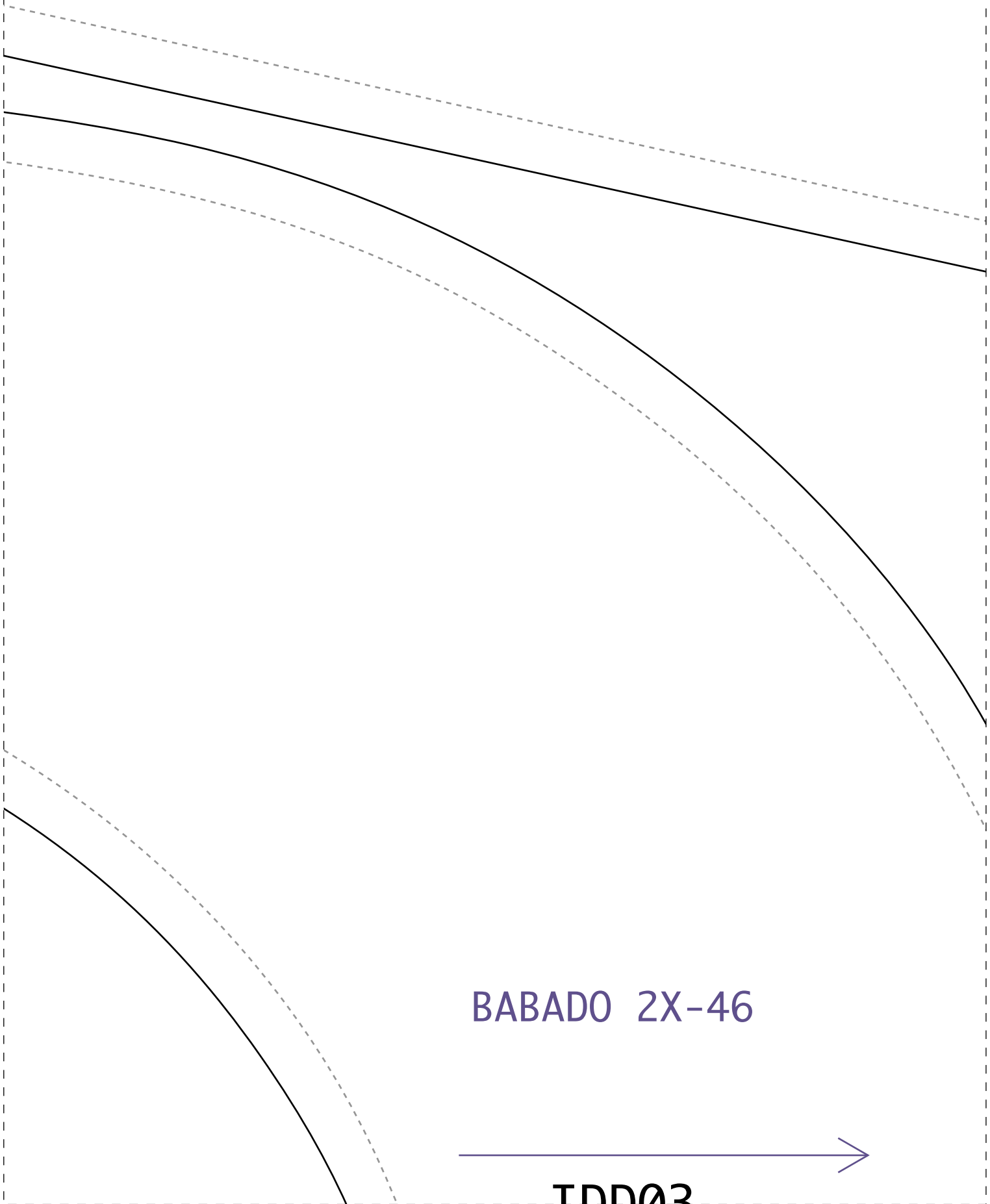


---

IDD03

Insti  
Semar  
Vesti

2-7

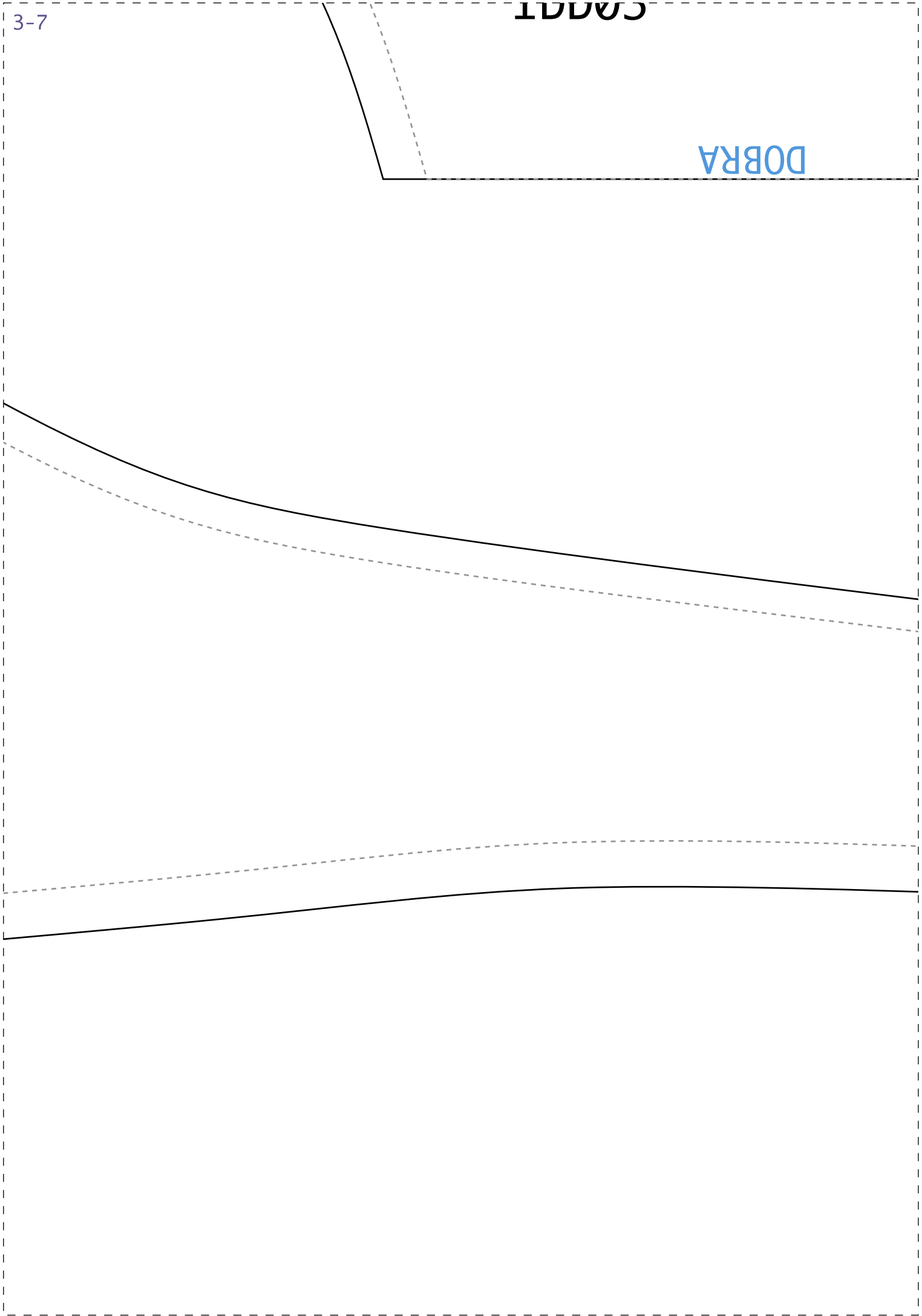


BABADO 2X-46

TDD02



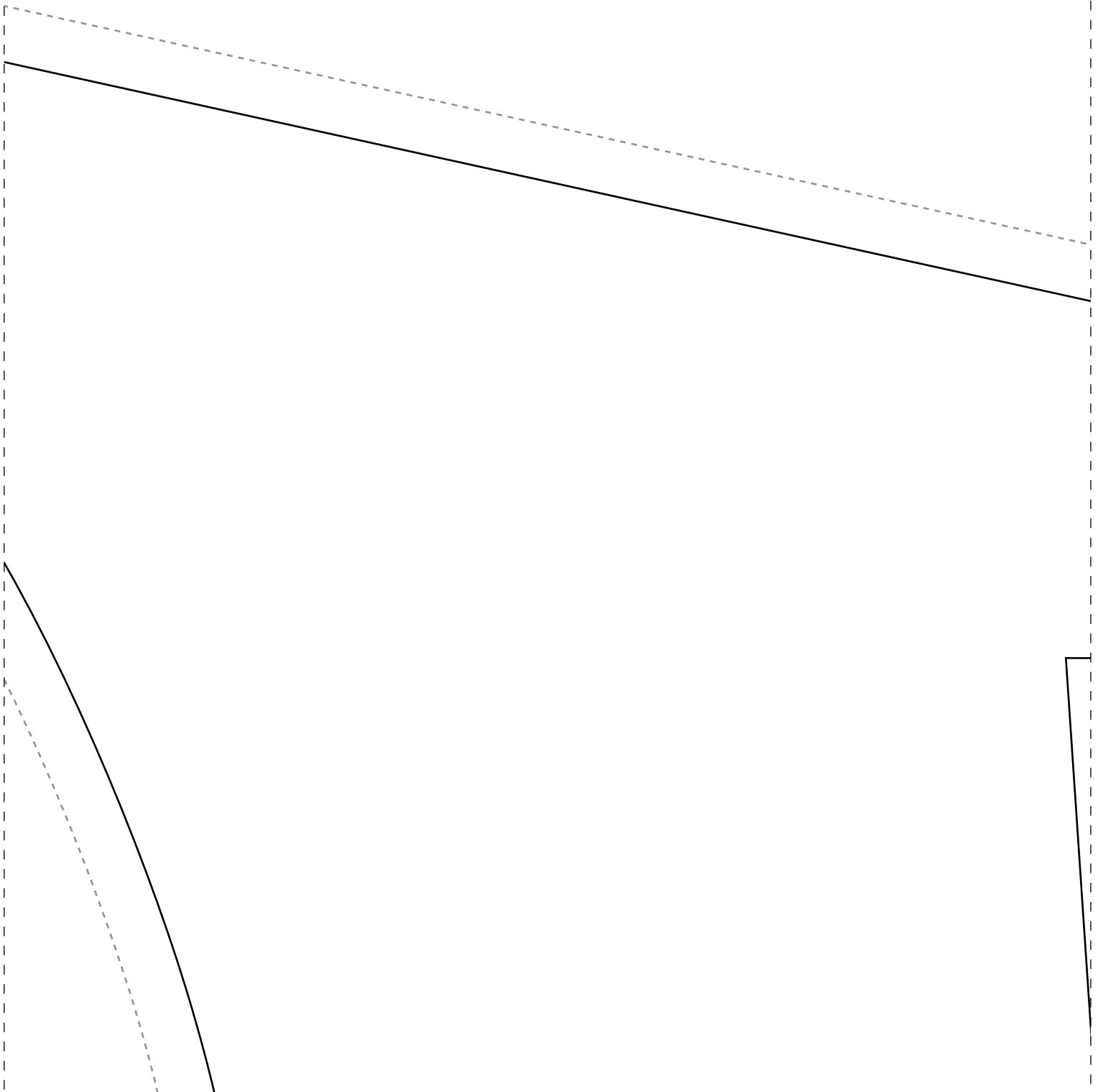
DOBRA



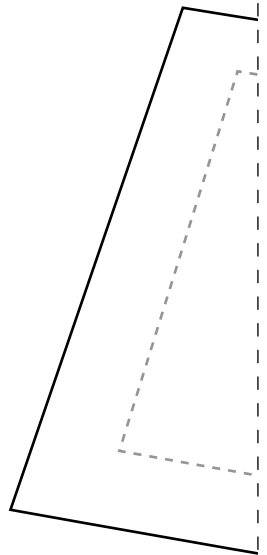
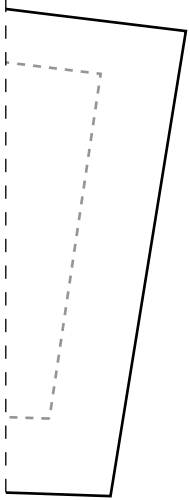
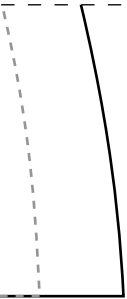
DOBRA

SAIA COSTAS 1X-46

Instituto Diana Demarchi  
na CMC  
Lido Envelope

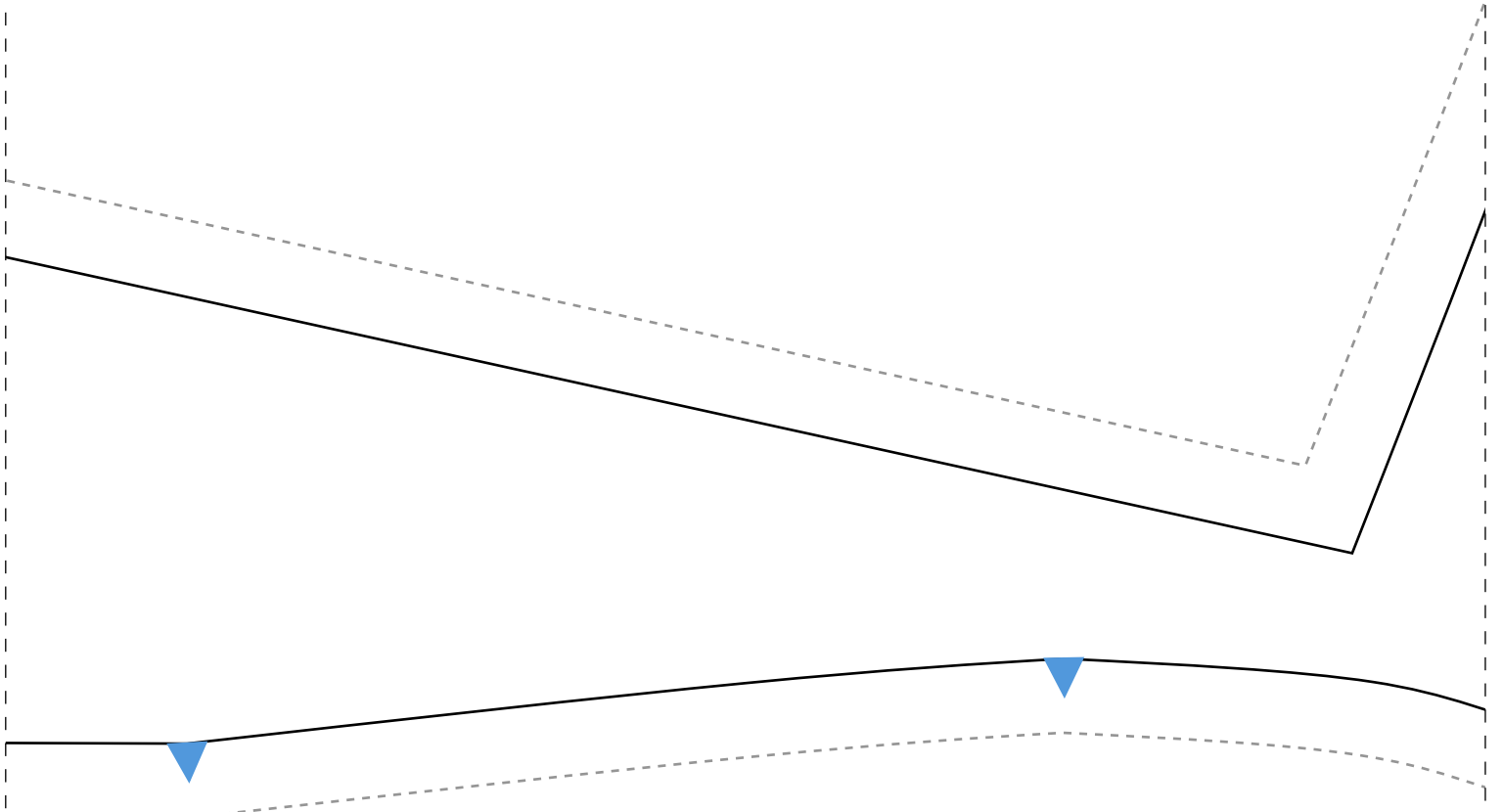


3-8





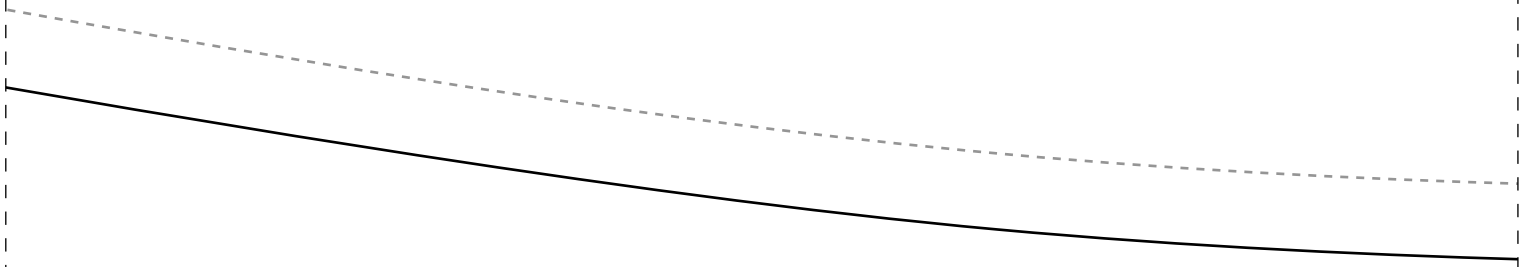
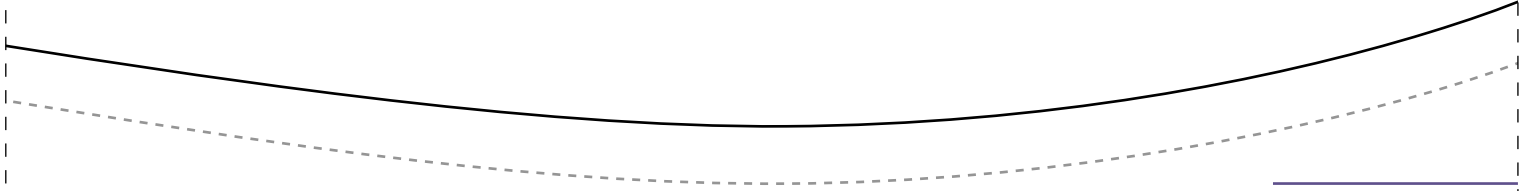
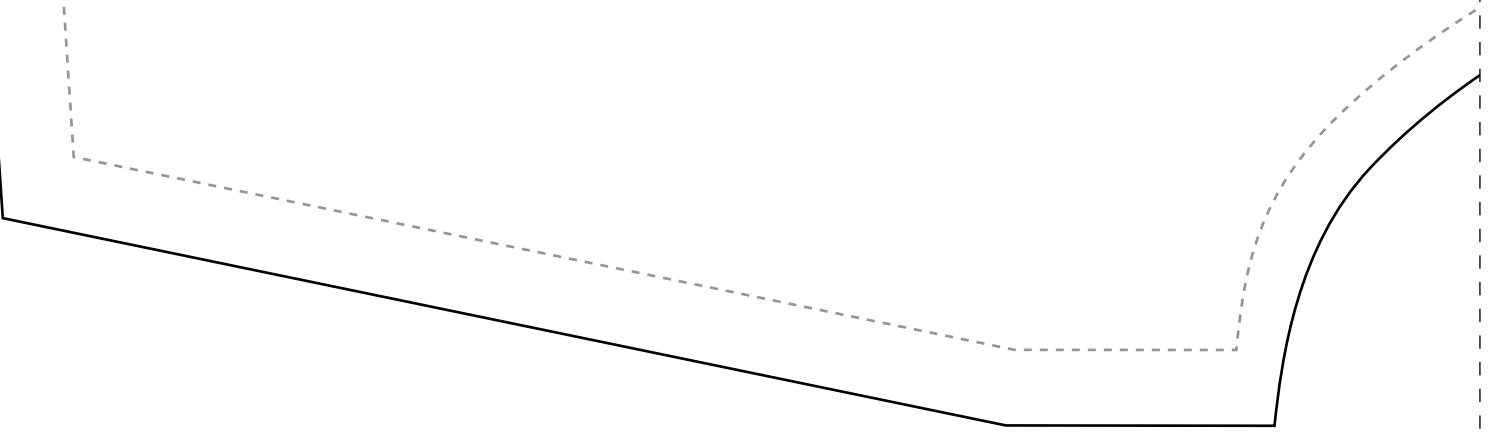




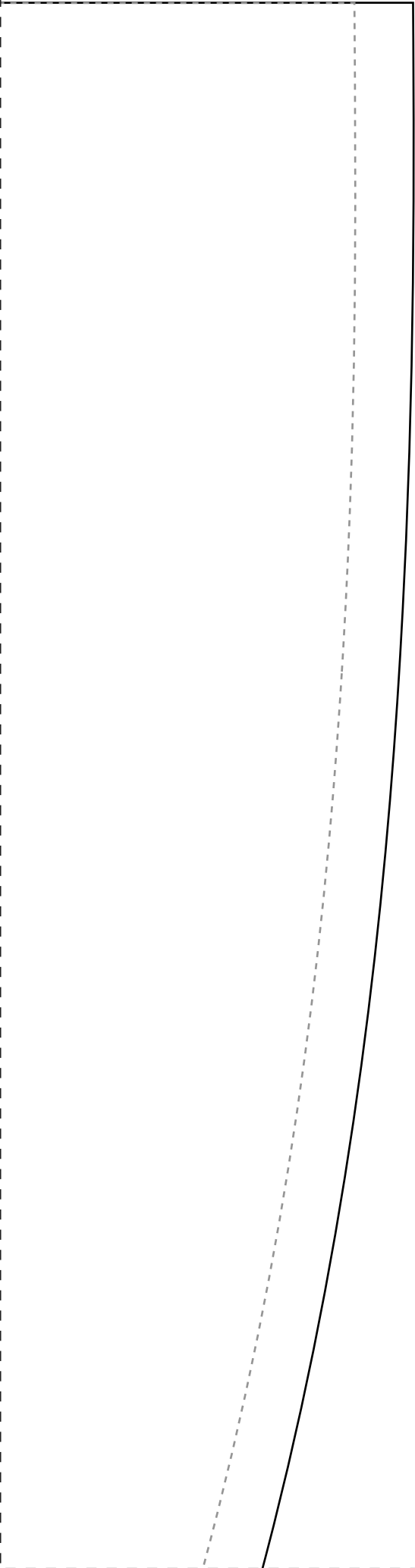
IDD03



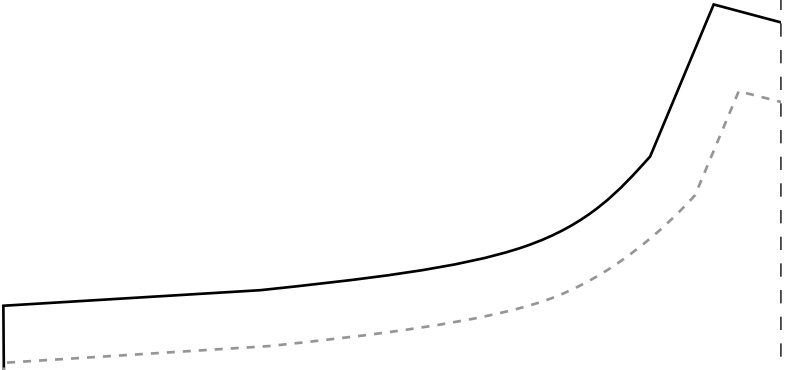
3-9



1-10

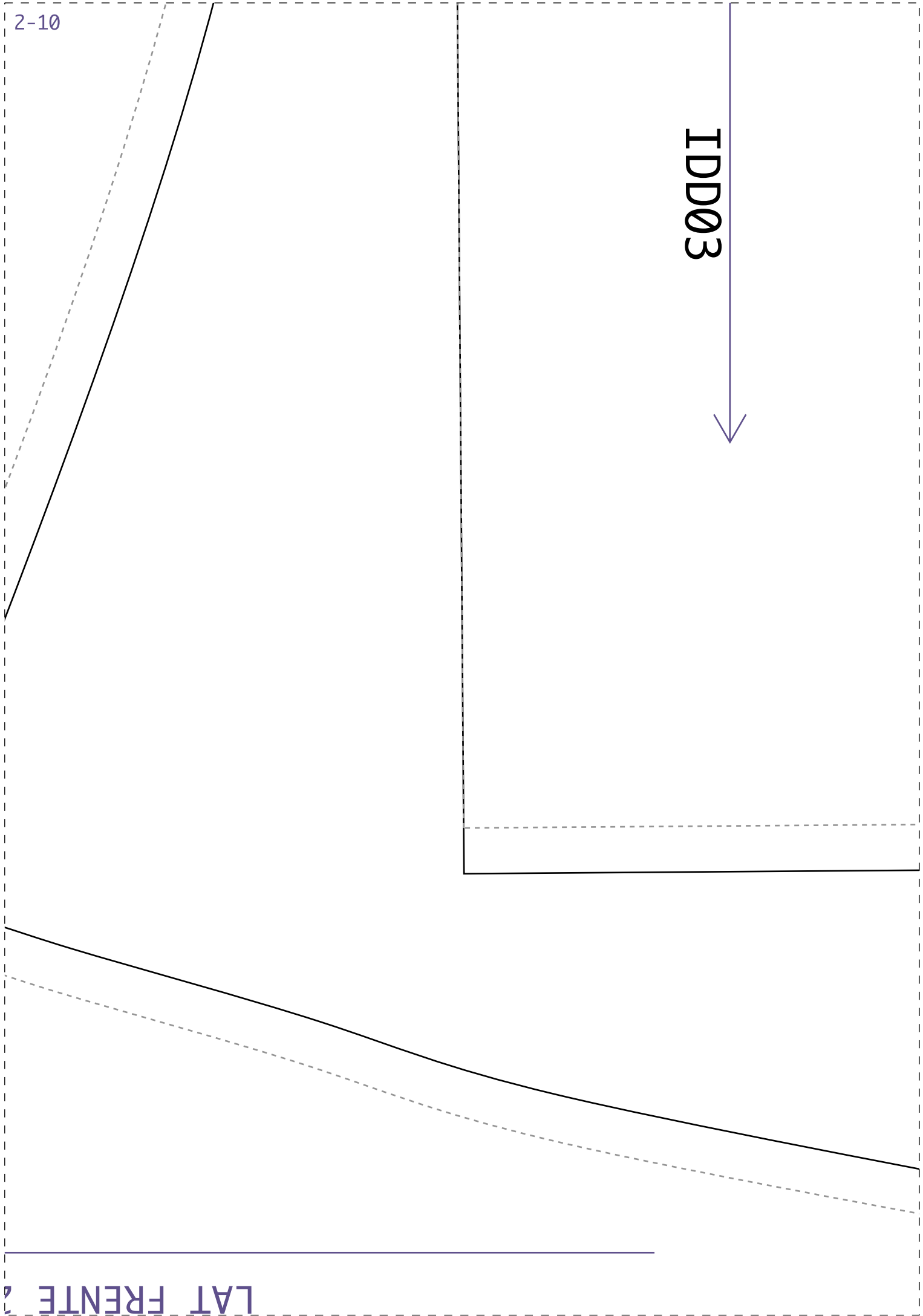


DOBRA



COSTAS 1X-46





2-10

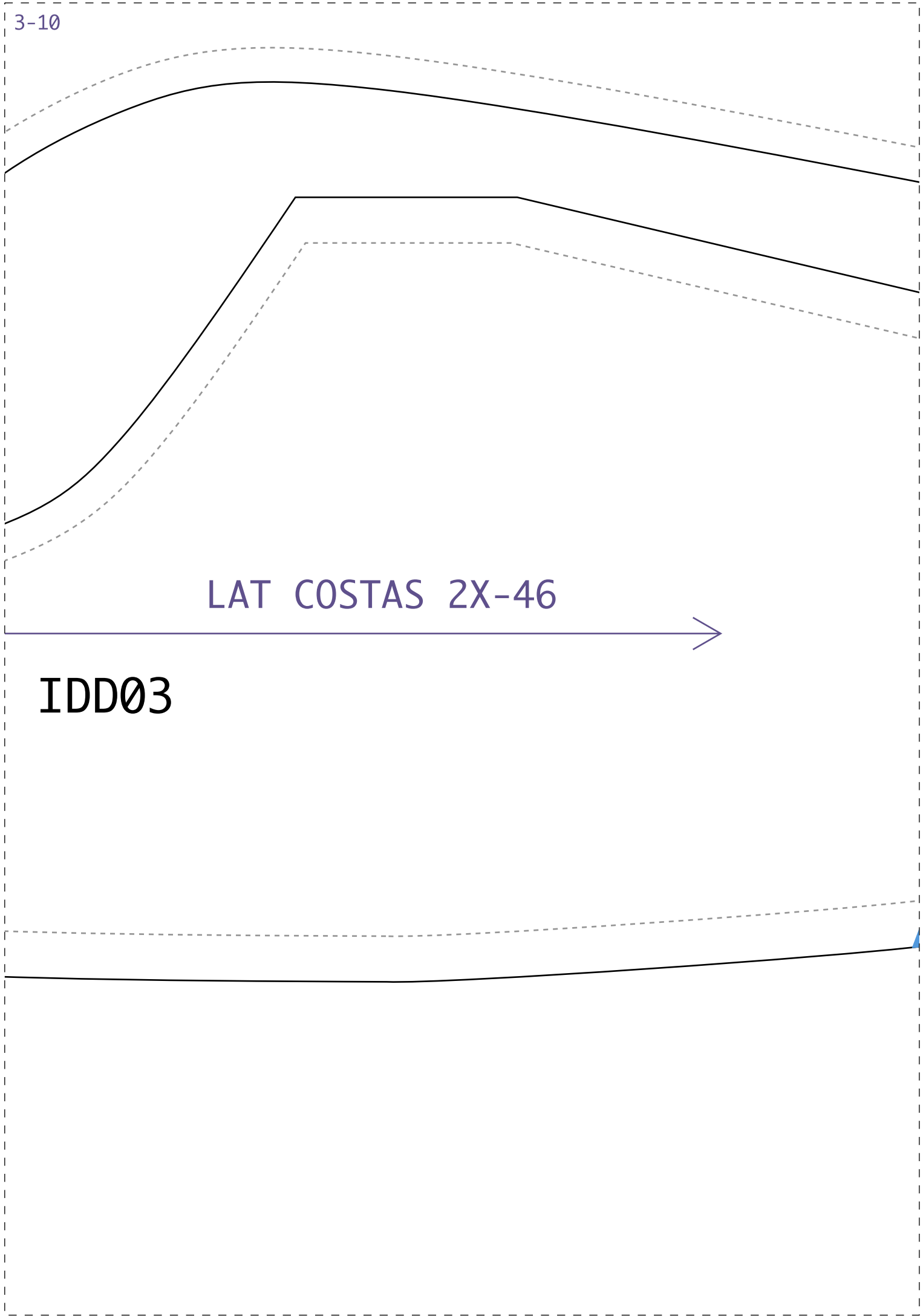
IDD03

LAT FRENTE

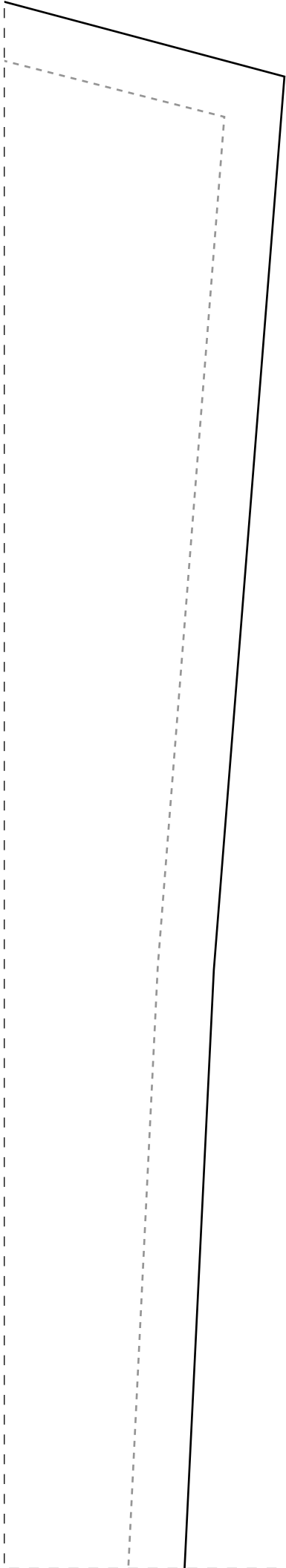
3-10

LAT COSTAS 2X-46

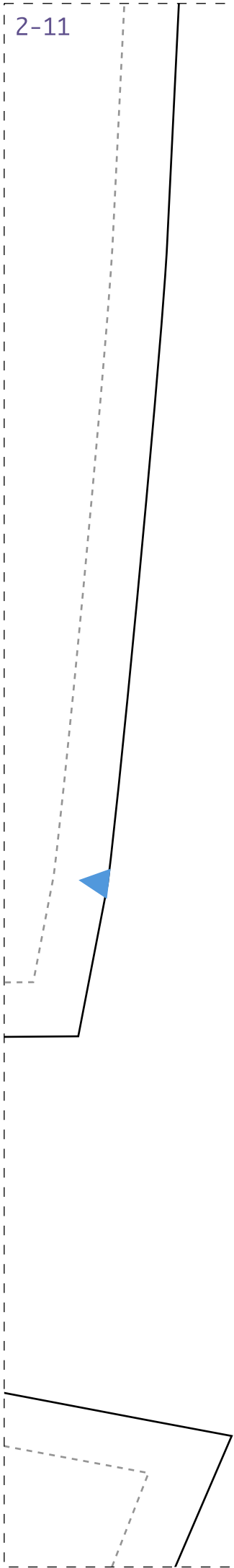
IDD03



1-11



2-11





3-11

