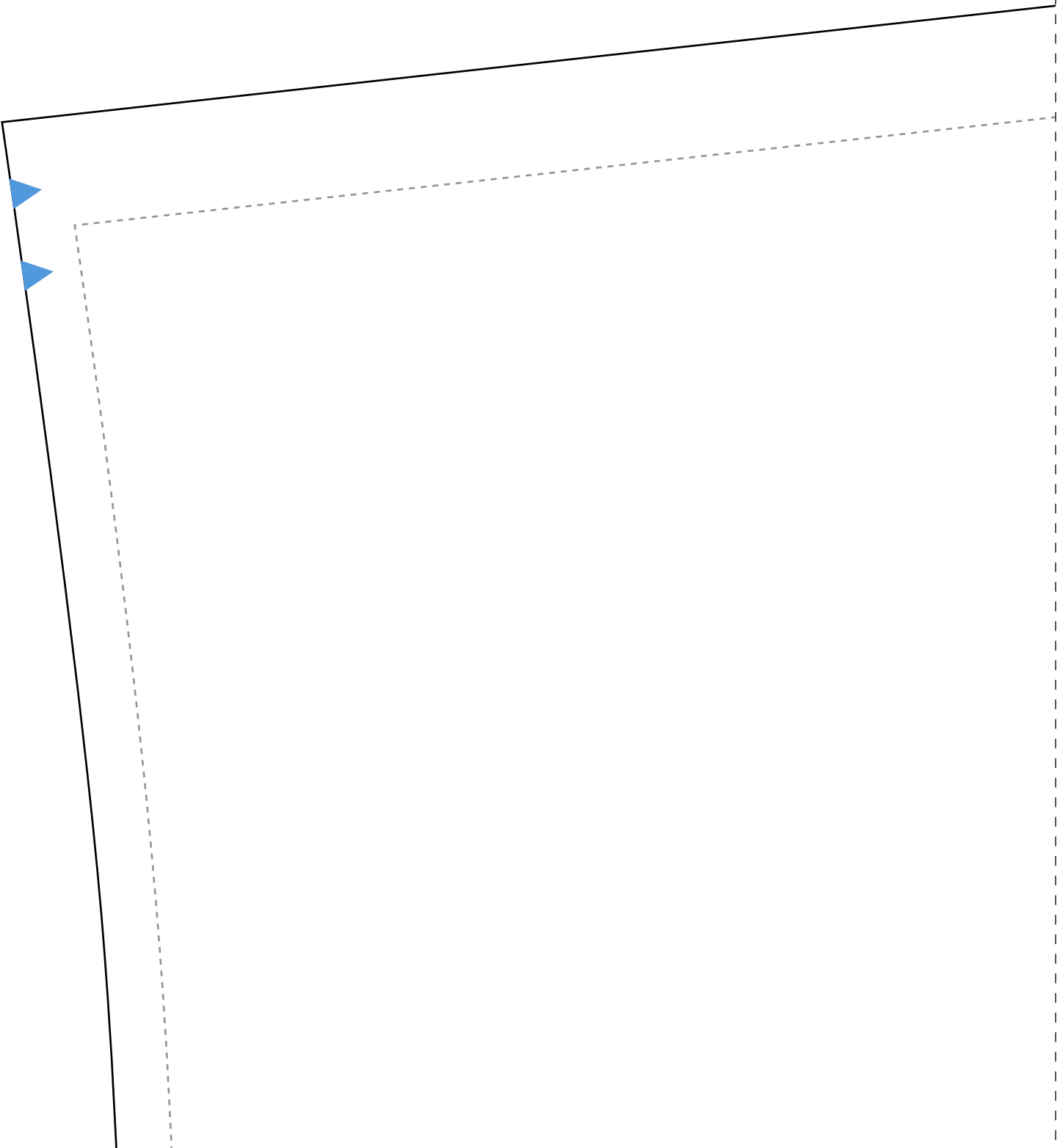
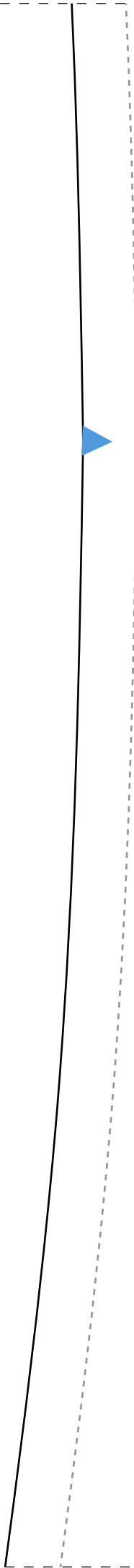


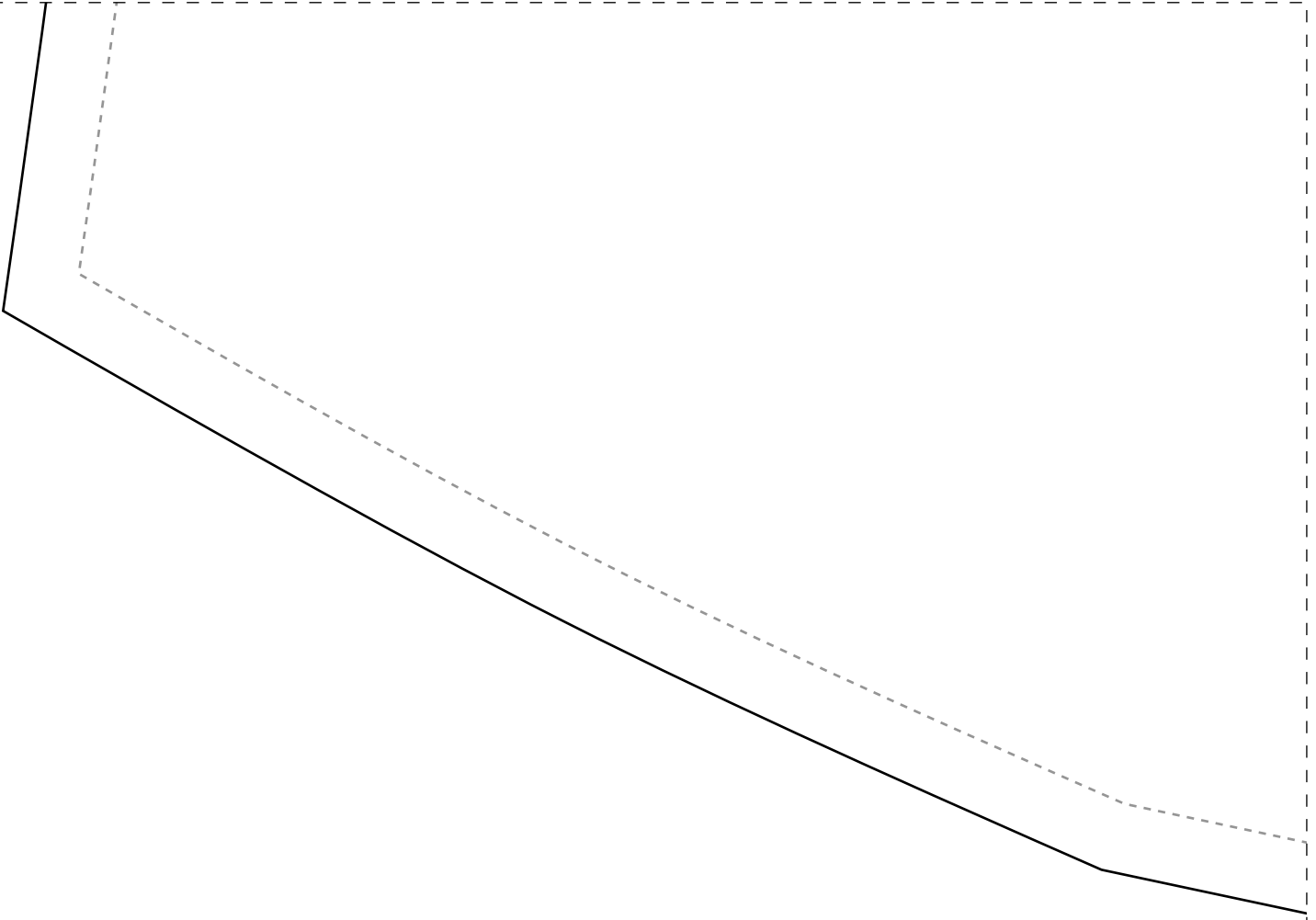
1-1



2-1

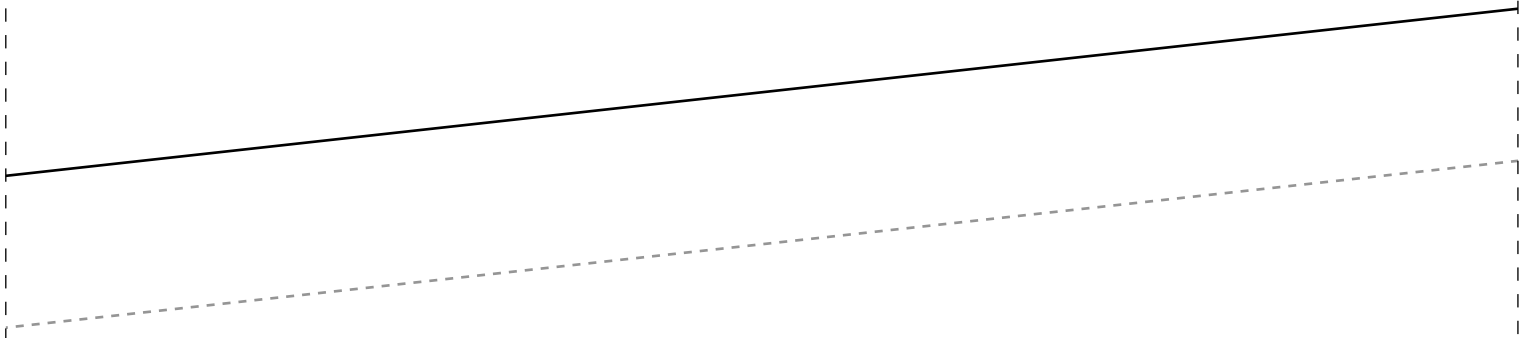


3-1



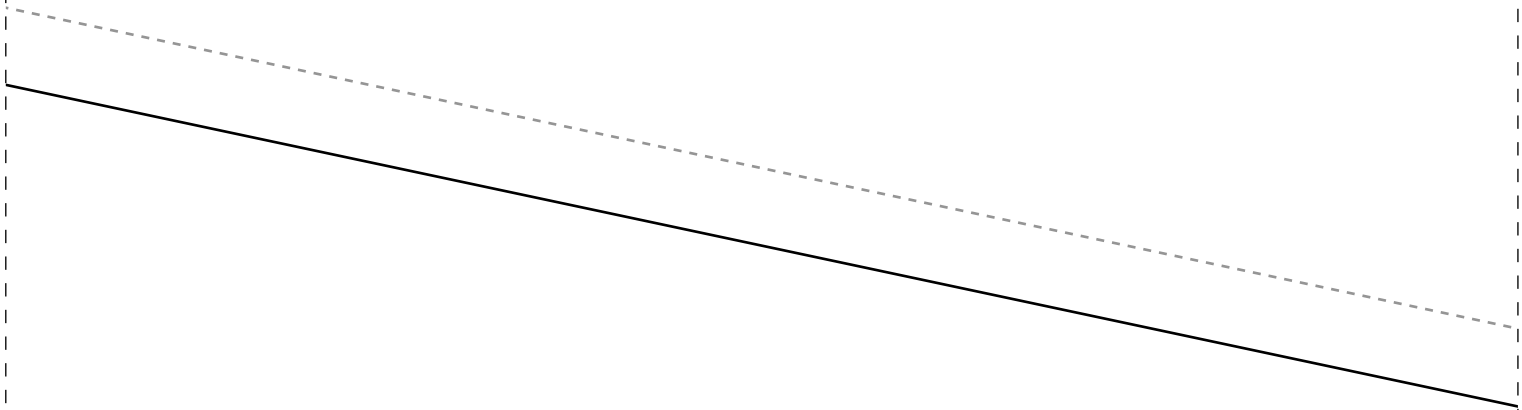
4cm

1-2

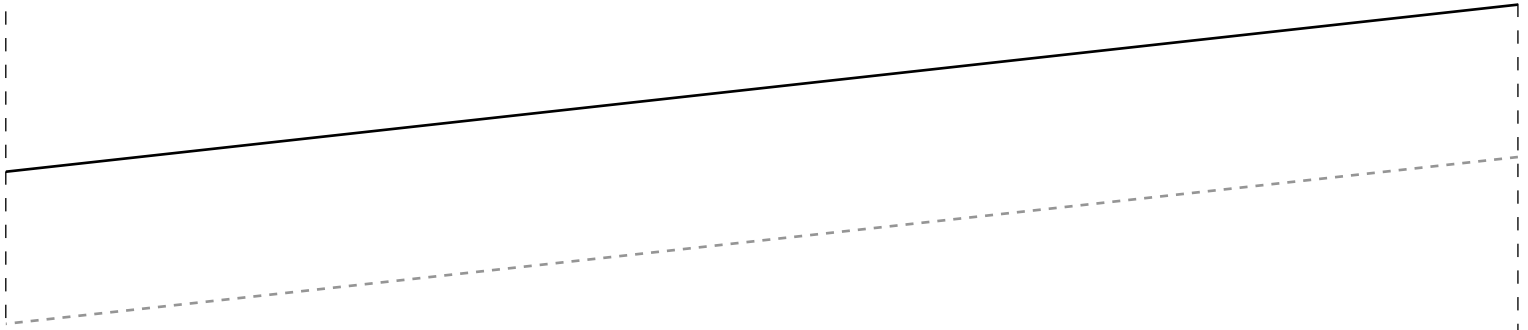


IDD03

Instit
Semana
Vestid

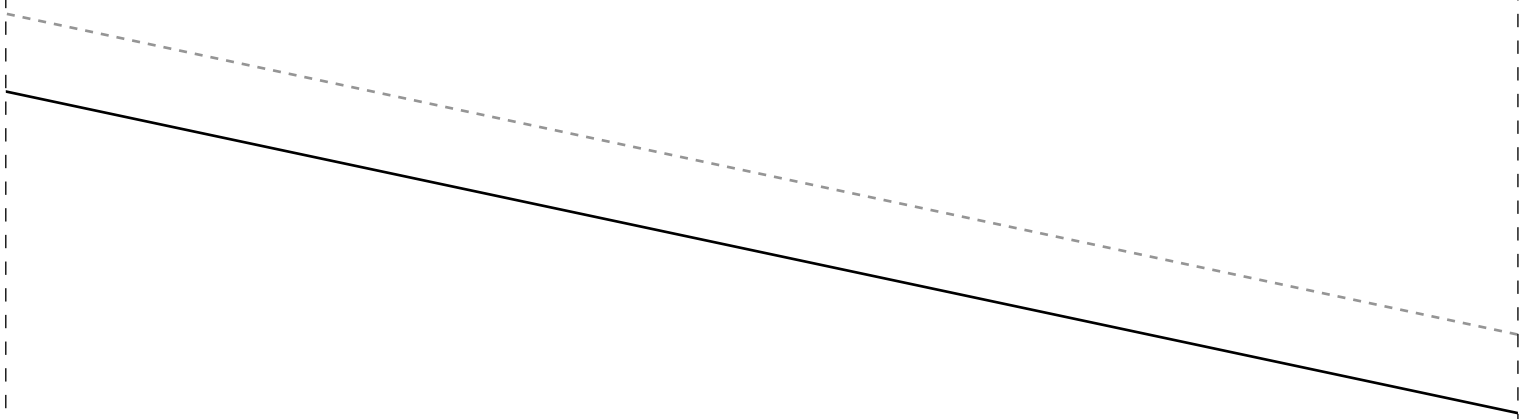


1-3



SAIA FRENTE 2X-50

uto Diana Demarchi
CMC
o Envelope



Ficha técnica:

Tecido plano 140cm de largura

- tamanhos 36/38 2m
- tamanhos 40/42 2,25m
- tamanhos 44/46 3,15m
- tamanhos 48/50 3,30m
- tamanhos 52/54 3,80m

-3m de viés para acabamentos

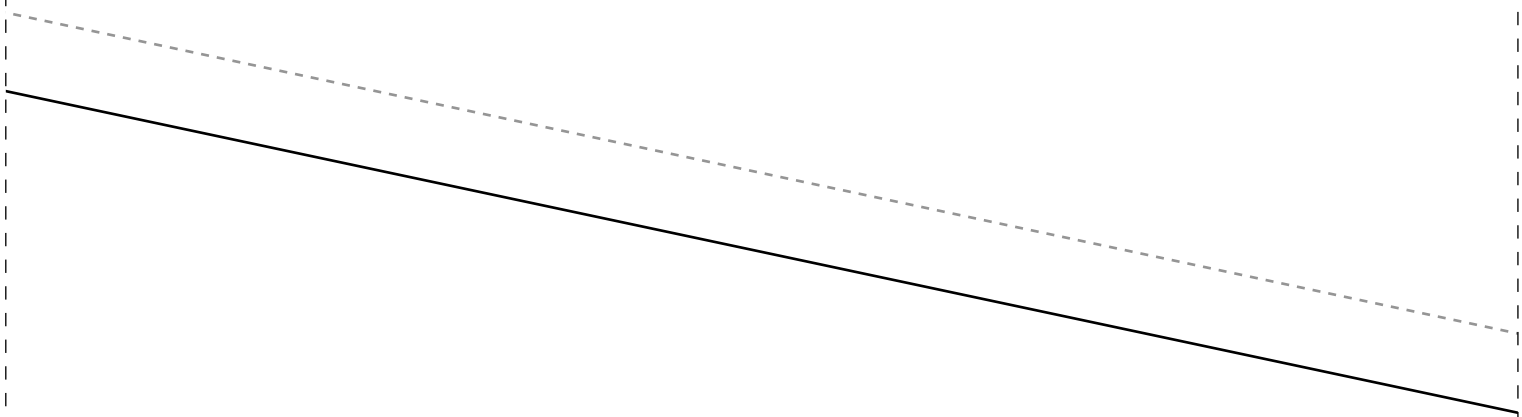
Decote e cavas com viés rebatido na reta

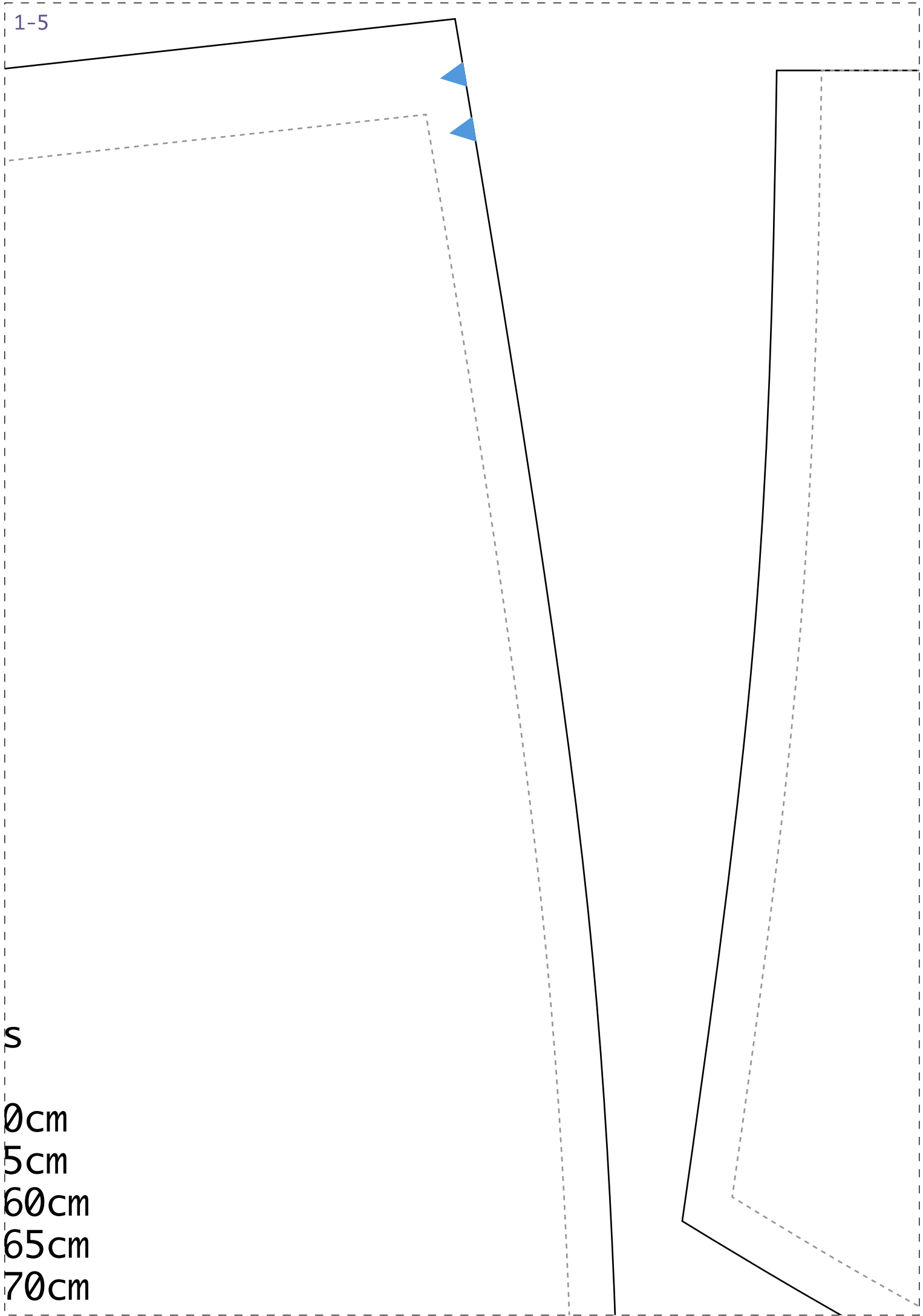
Barra e babado com bainha lenço

Cordinha para a cintura (pode ser de vié ou comprada pronta):

- tamanhos 36/38 uma de 90cm e outra de 5
- tamanhos 40/42 uma de 95cm e outra de 5
- tamanhos 44/46 uma de 100cm e outra de
- tamanhos 48/50 uma de 105cm e outra de
- tamanhos 52/54 uma de 110cm e outra de



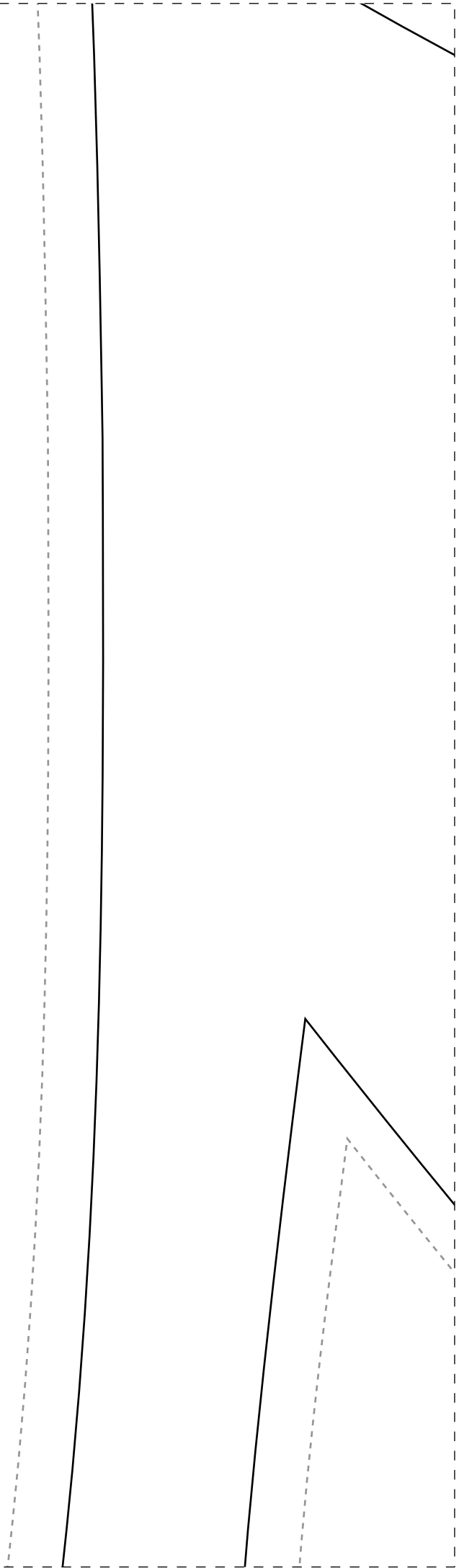




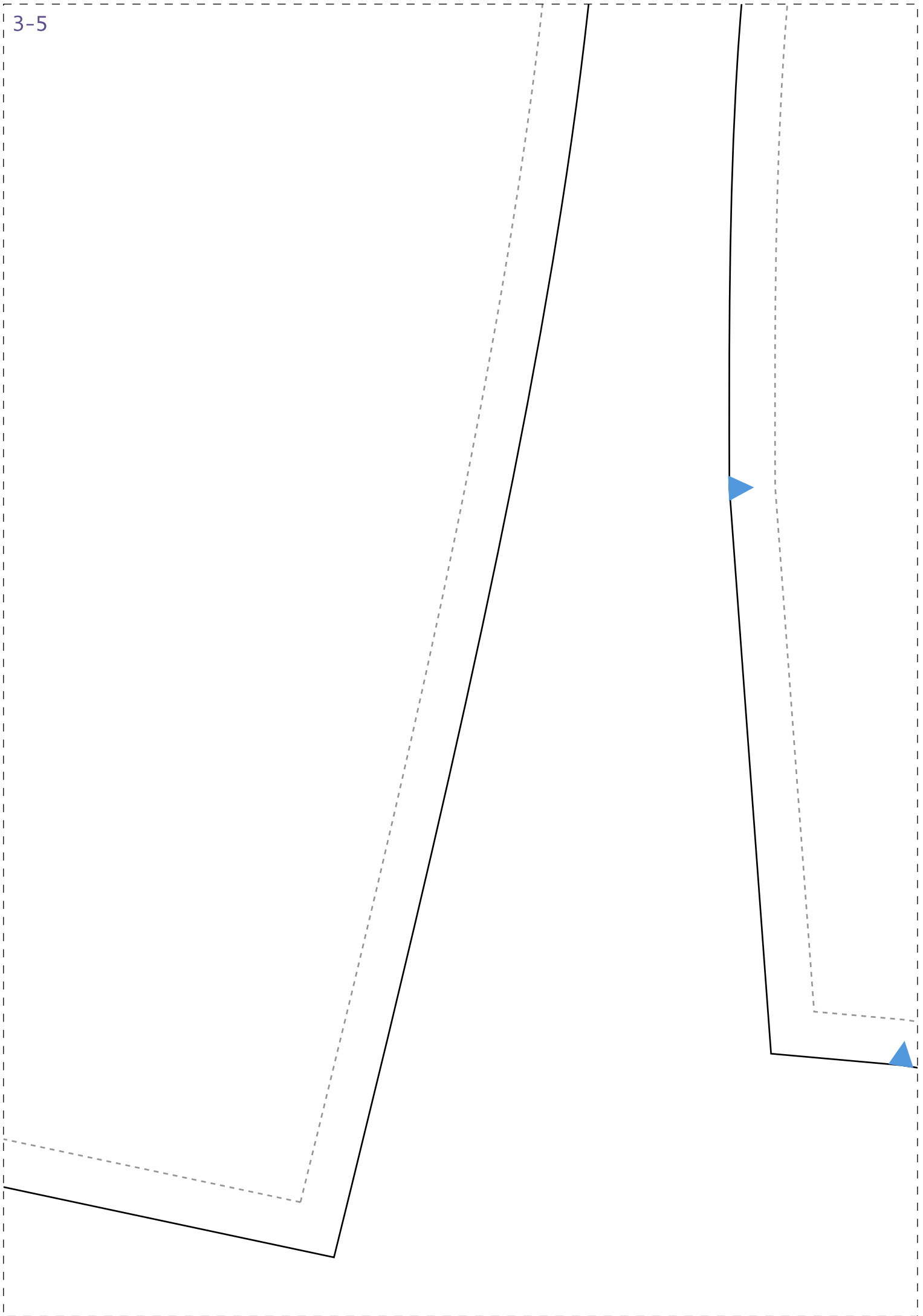
1-5

S

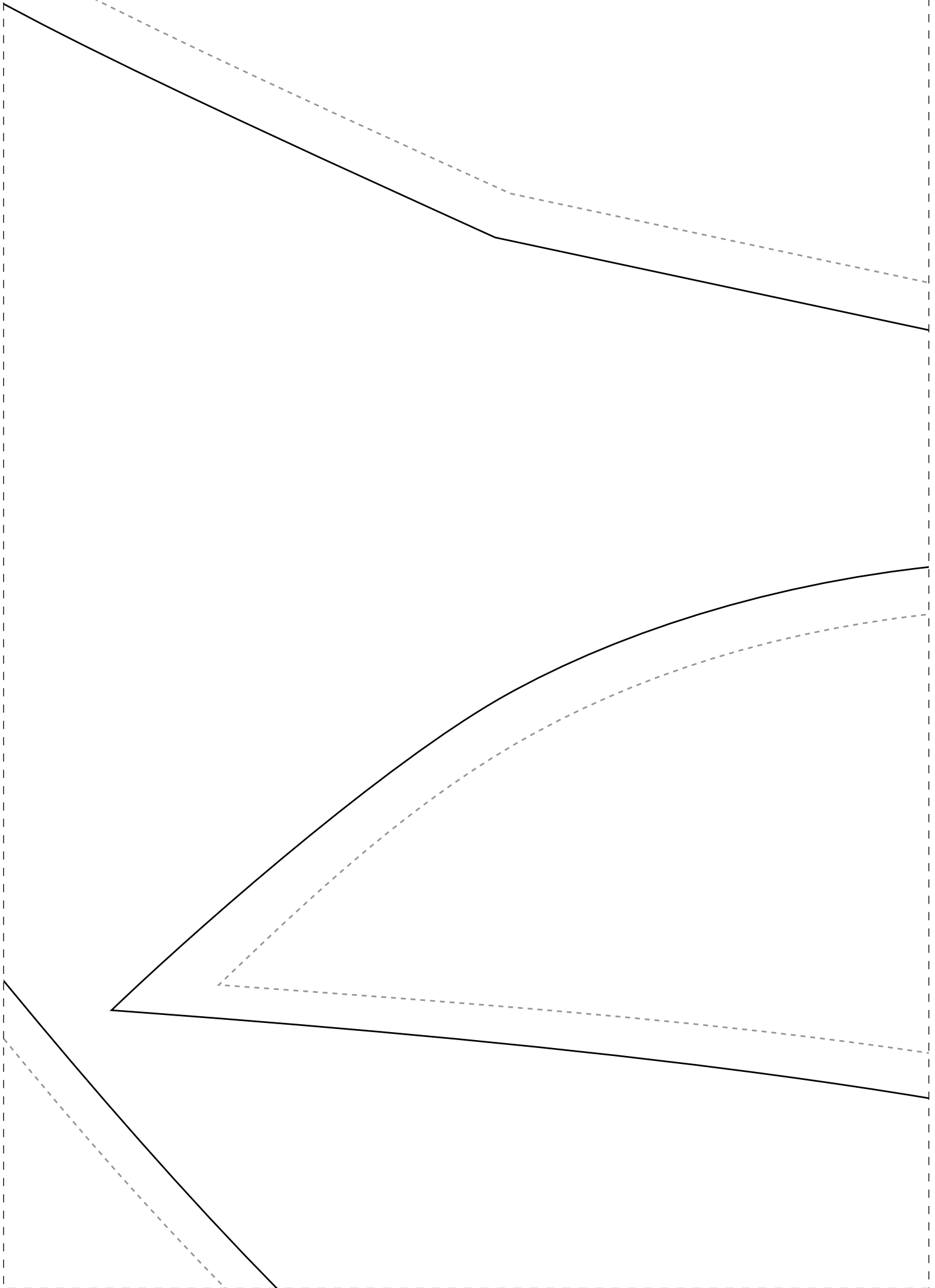
0cm
5cm
60cm
65cm
70cm



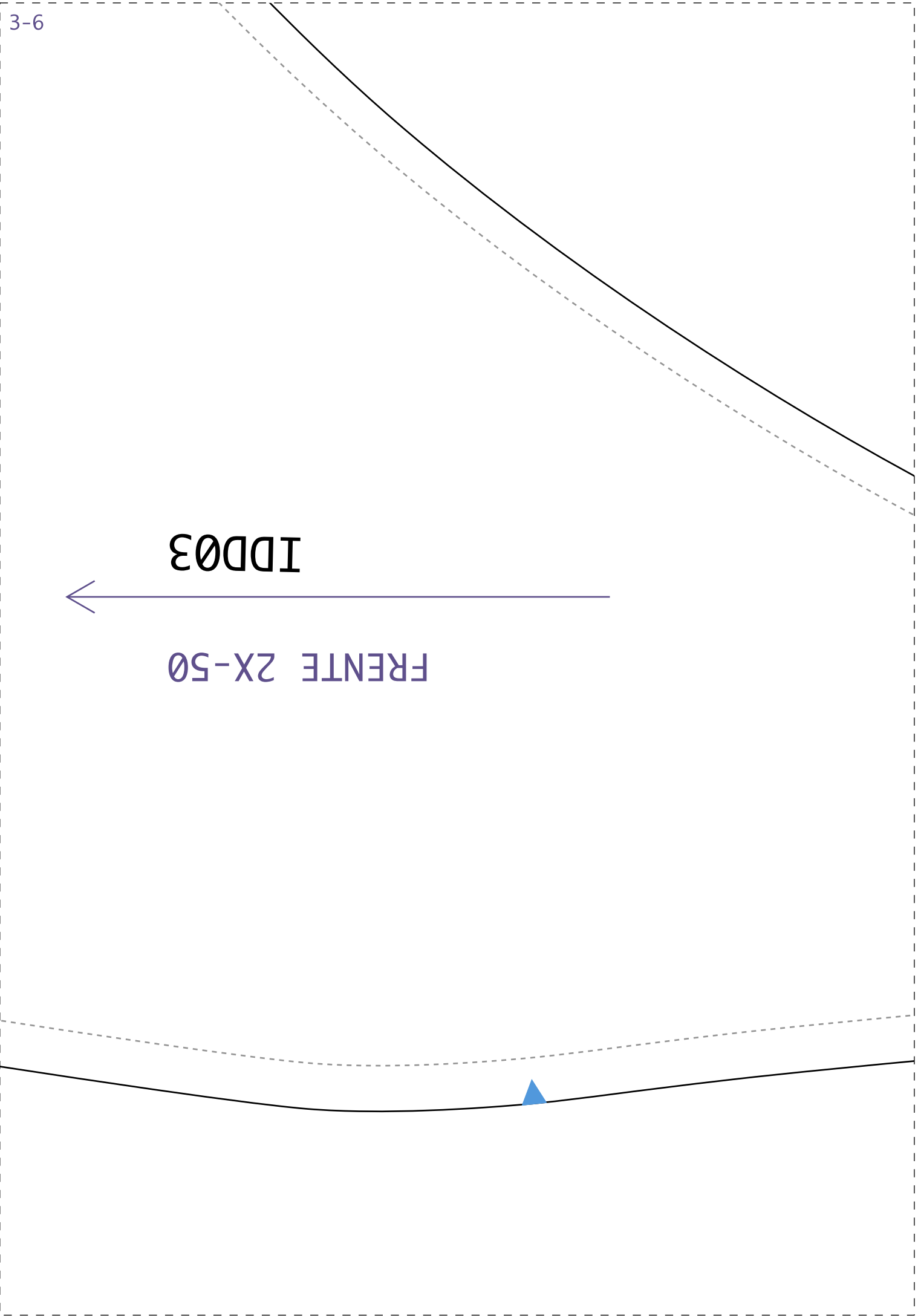
3-5



2-6



3-6



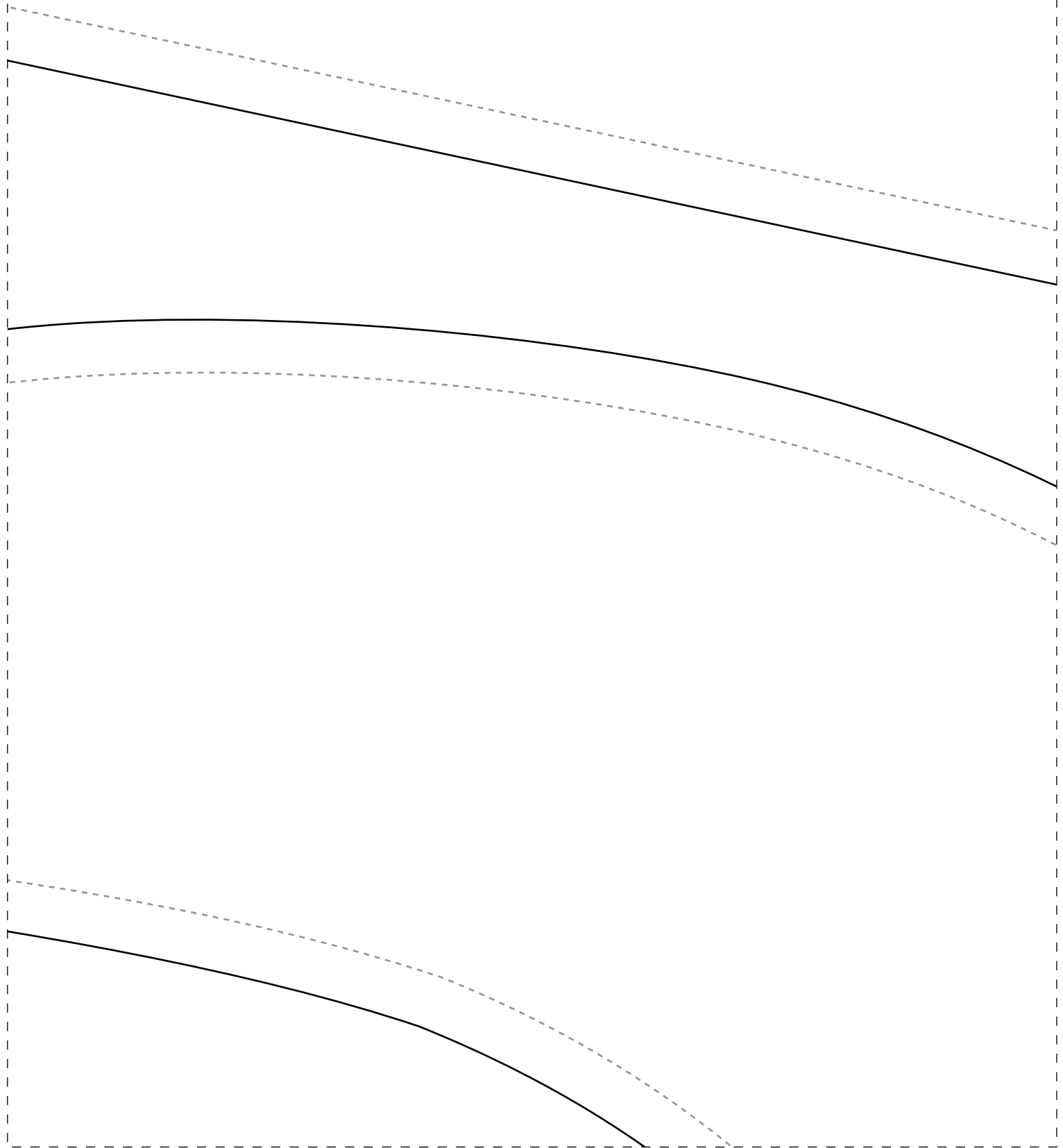
IDD03

FRENTE 2X-50

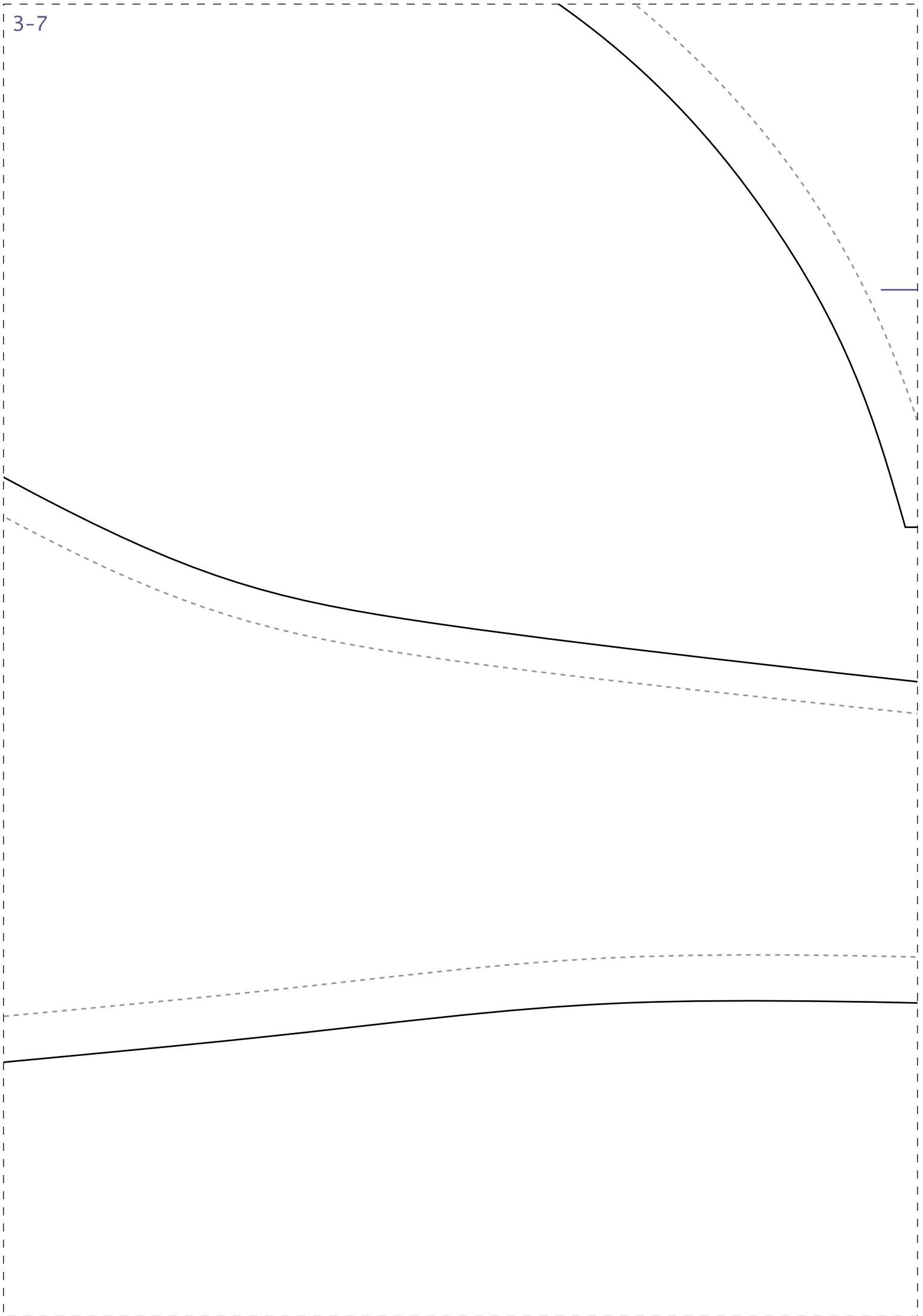


IDD03

Ins
Ser
Ves



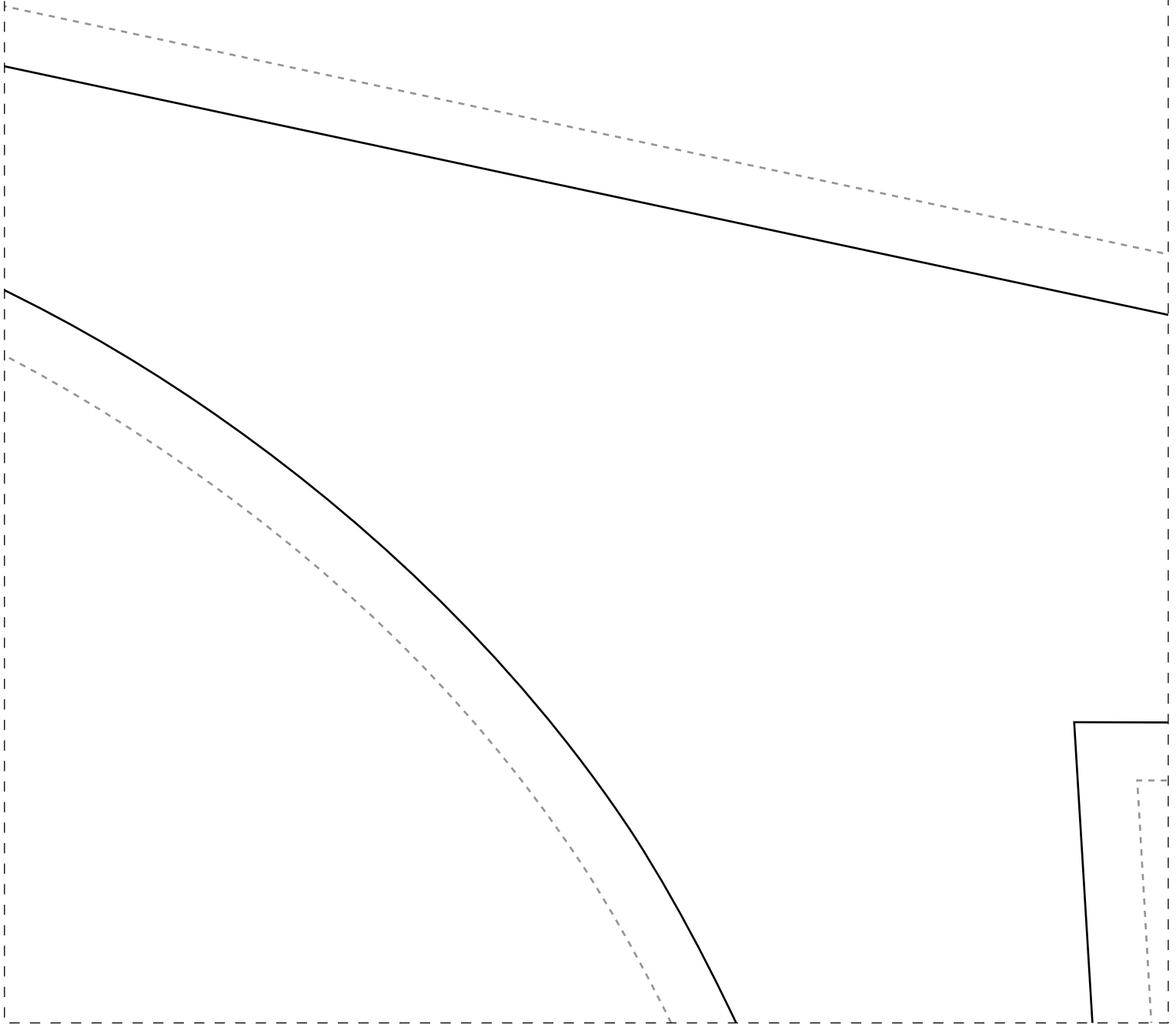
3-7



DOBRA

SAIA COSTAS 1X-50

stituto Diana Demarchi
mana CMC
stido Envelope



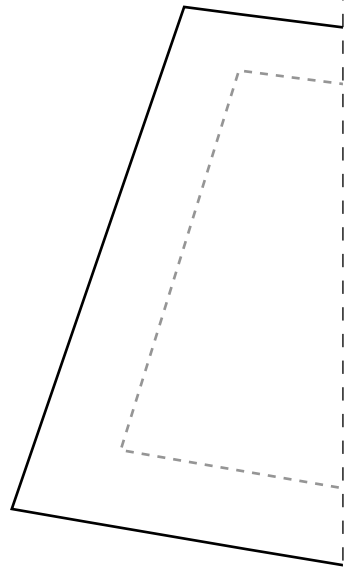
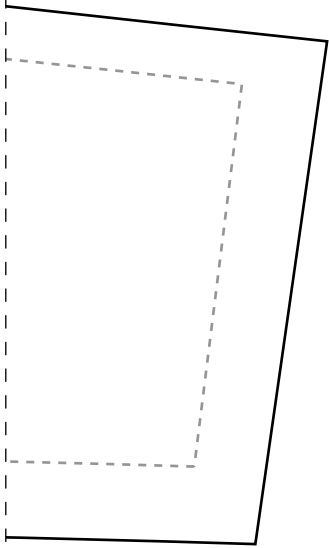
3-8

BABADO 2X-50

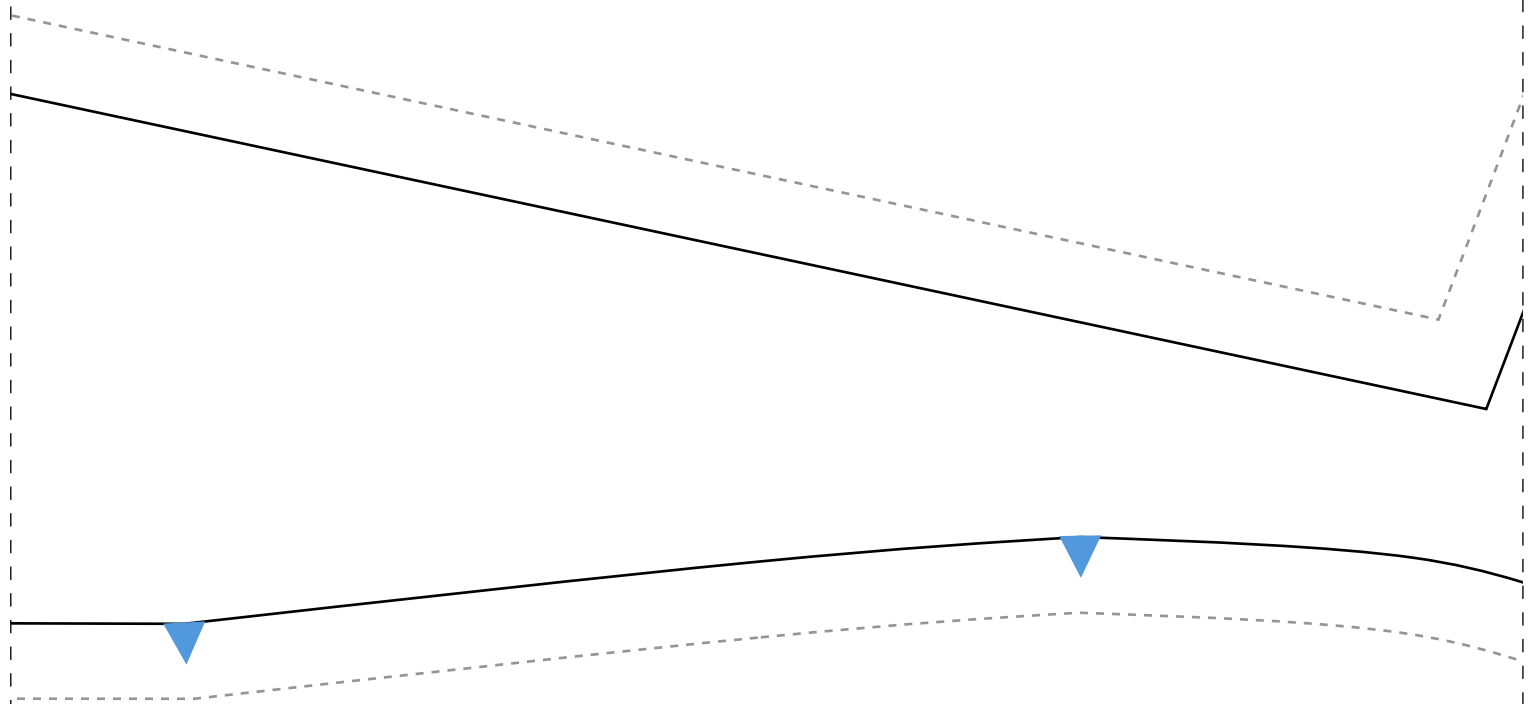


IDD03

DOBRA



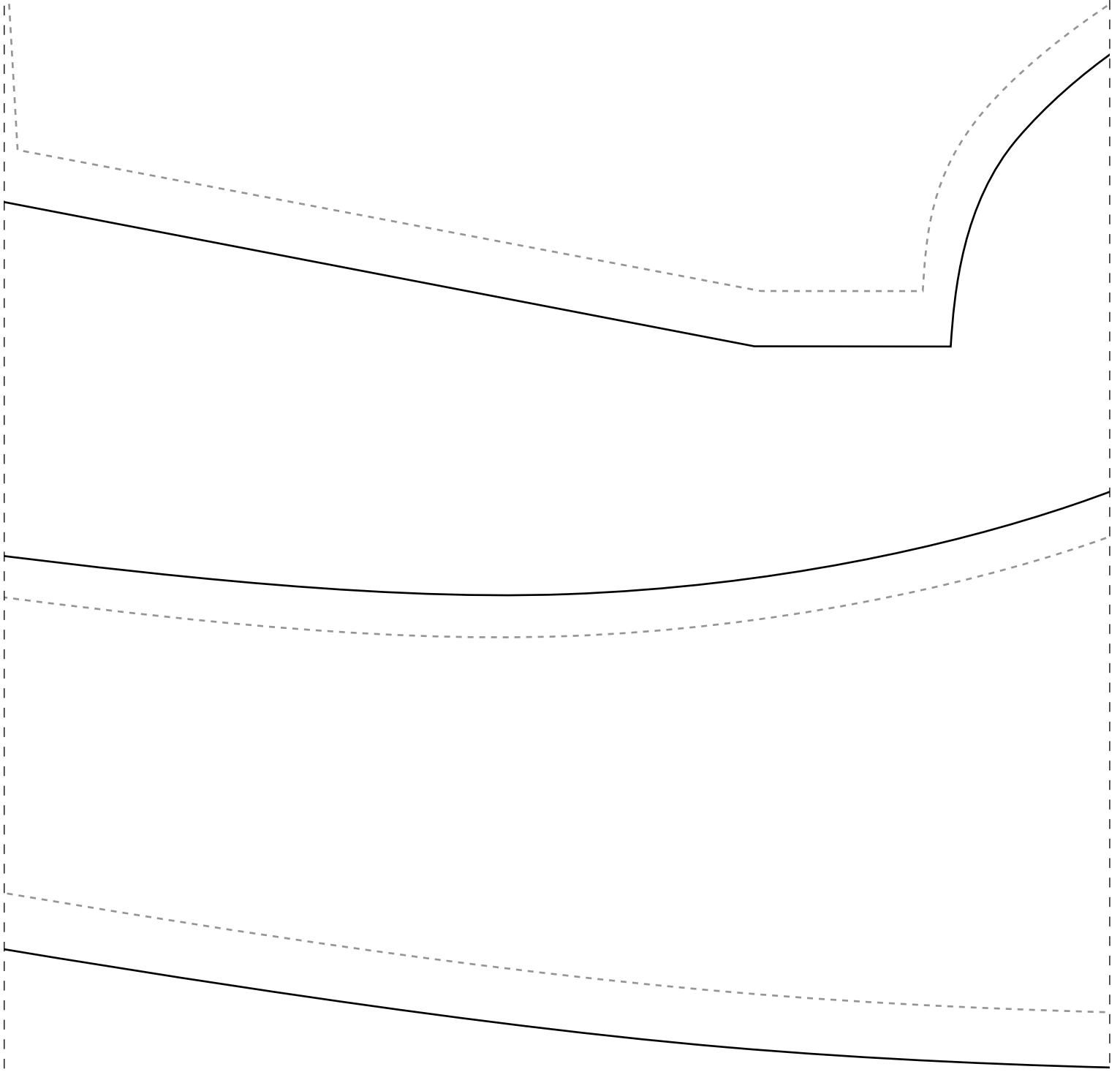




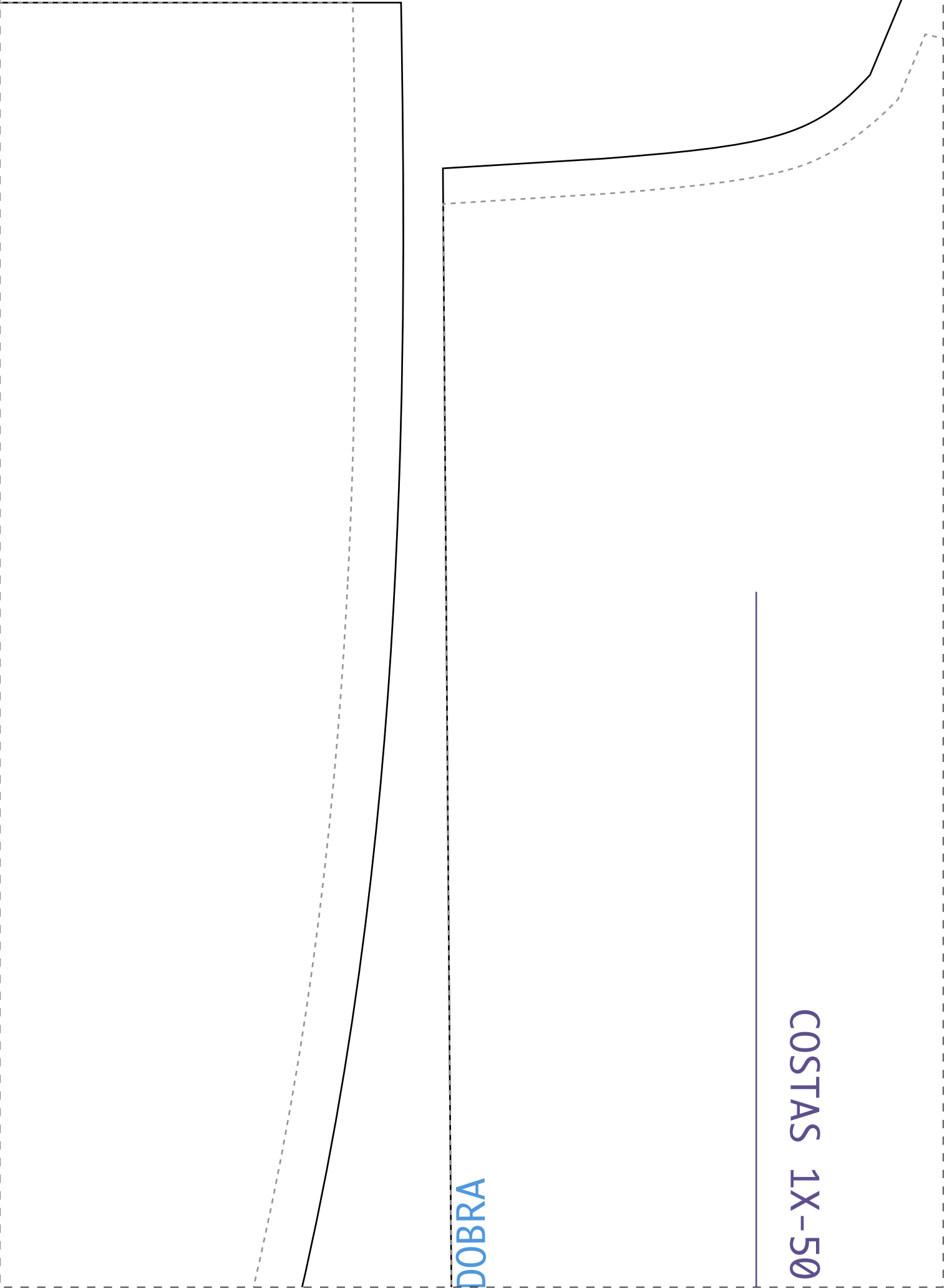
I DD 03



X-50



1-10

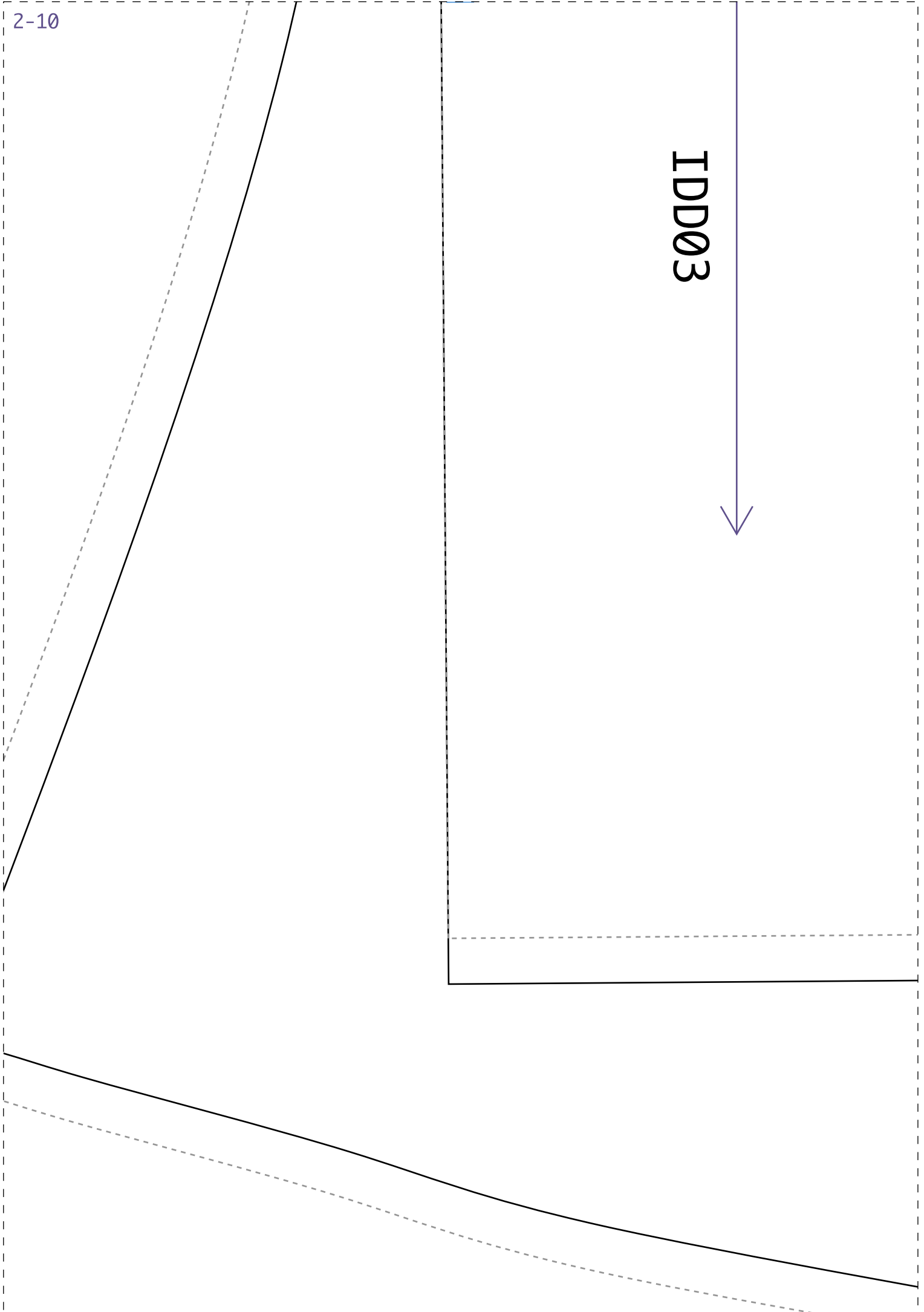


DOBRA

COSTAS 1X-50

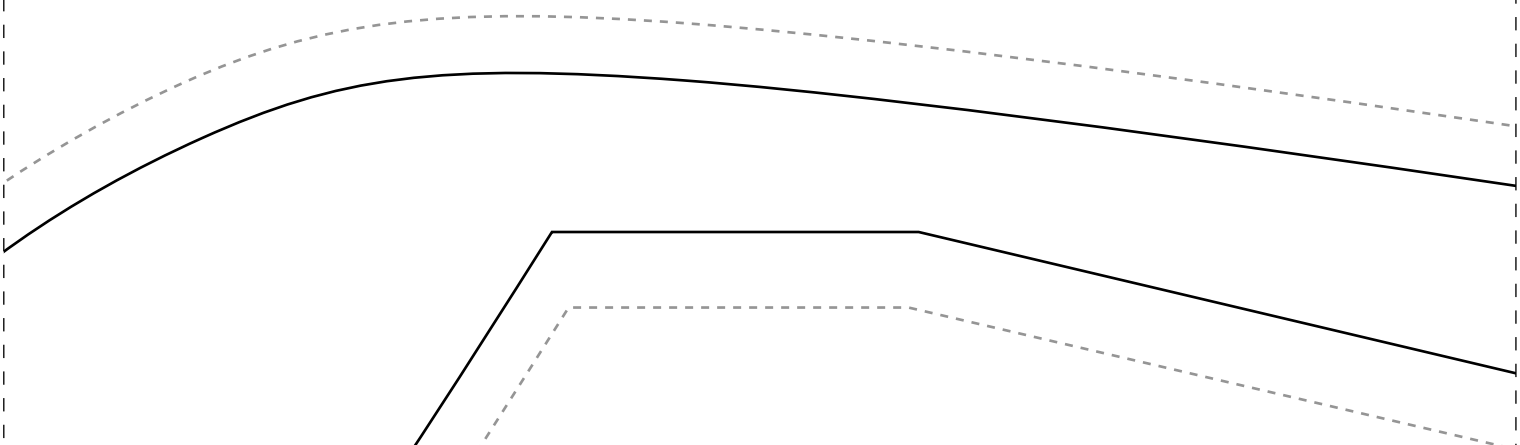
2-10

IDD03



3-10

LAT FRENTE 2

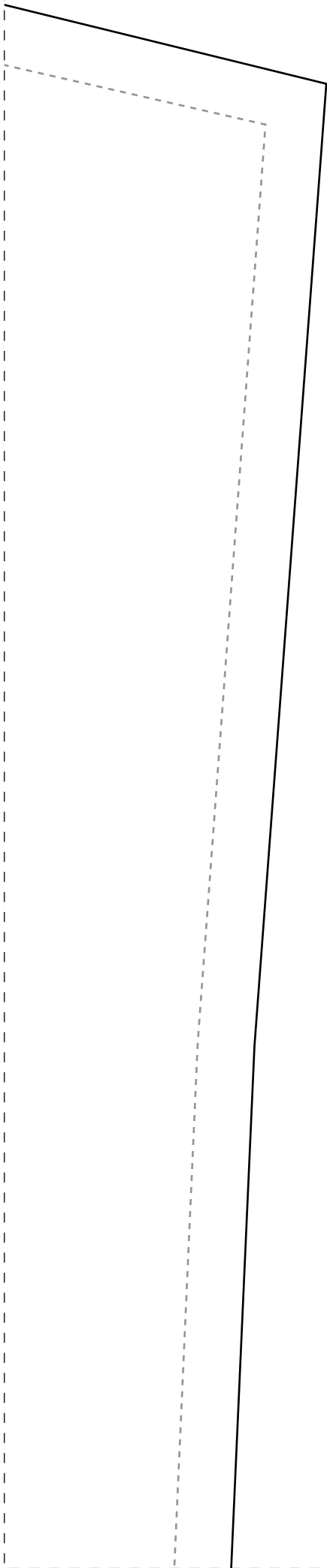


LAT COSTAS 2X-50

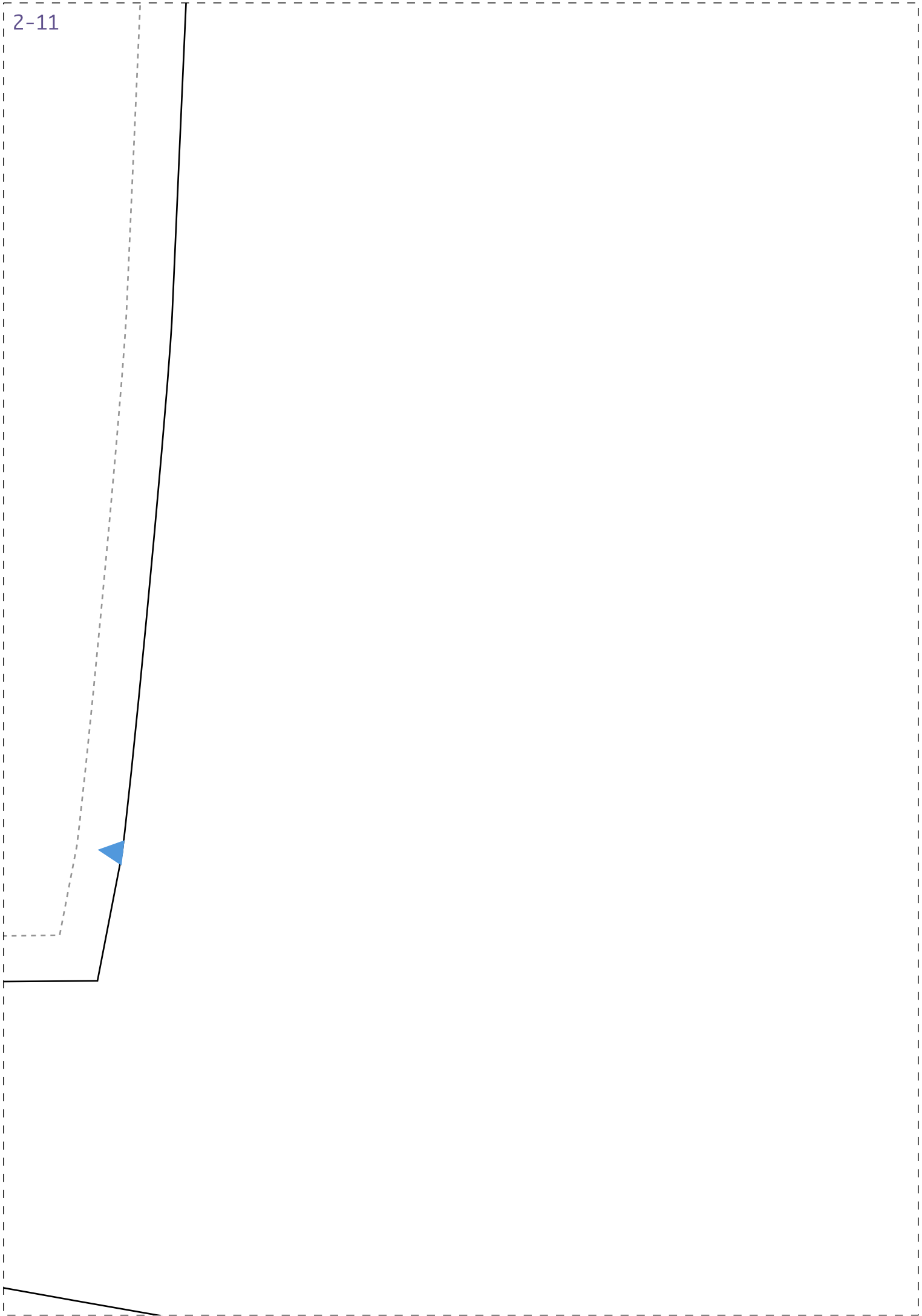
IDD03



1-11



2-11



3-11

