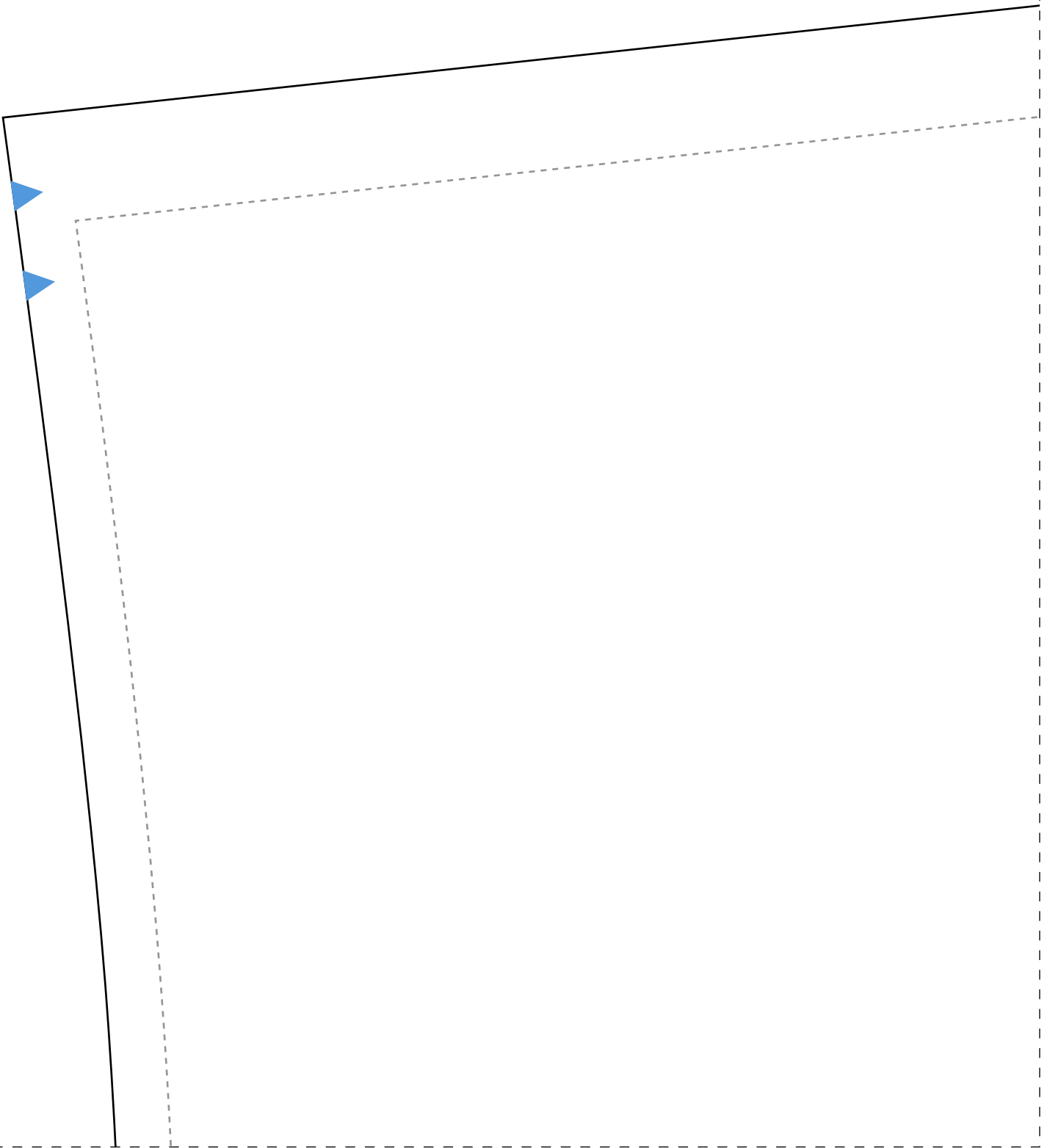
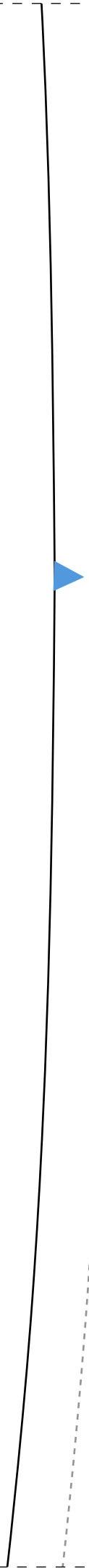


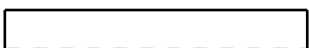
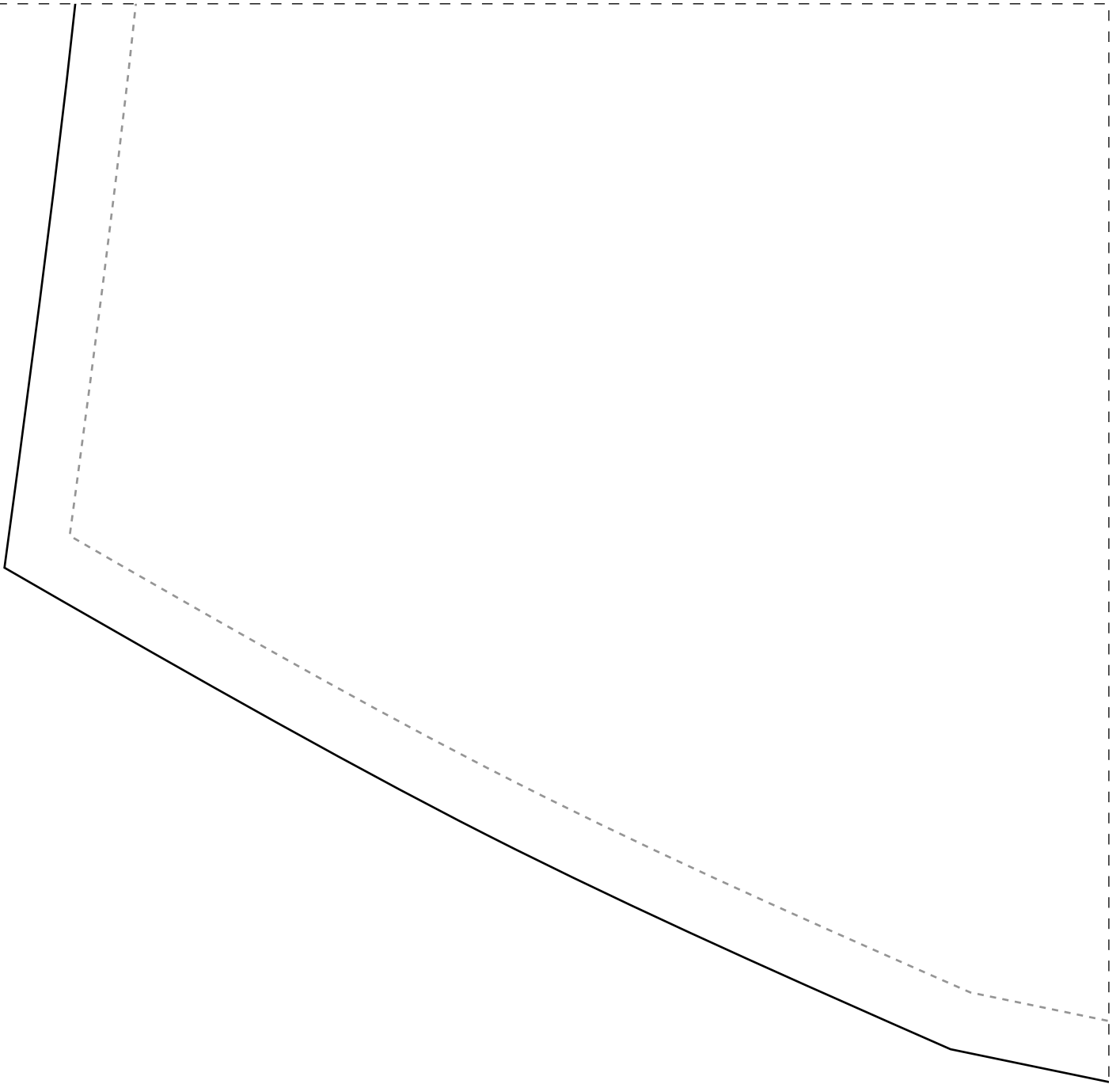
1-1



2-1

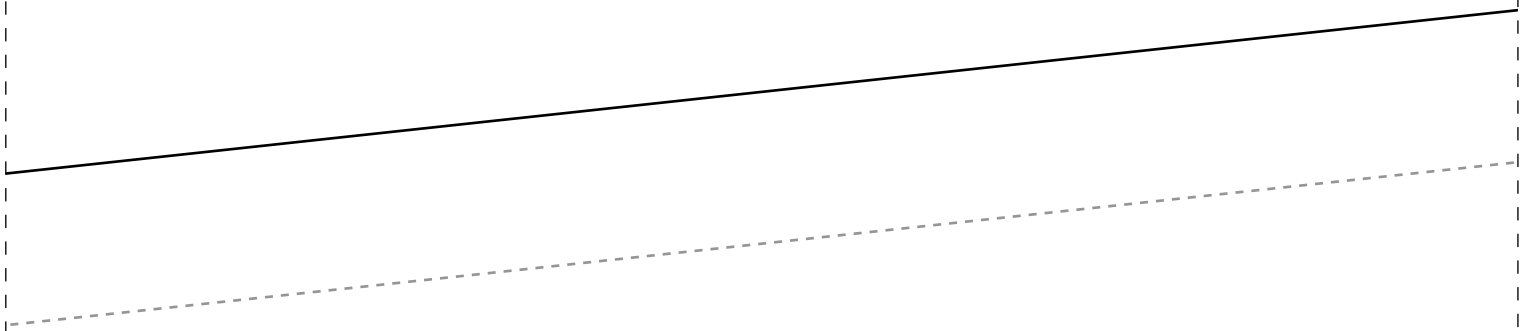


3-1



4-1

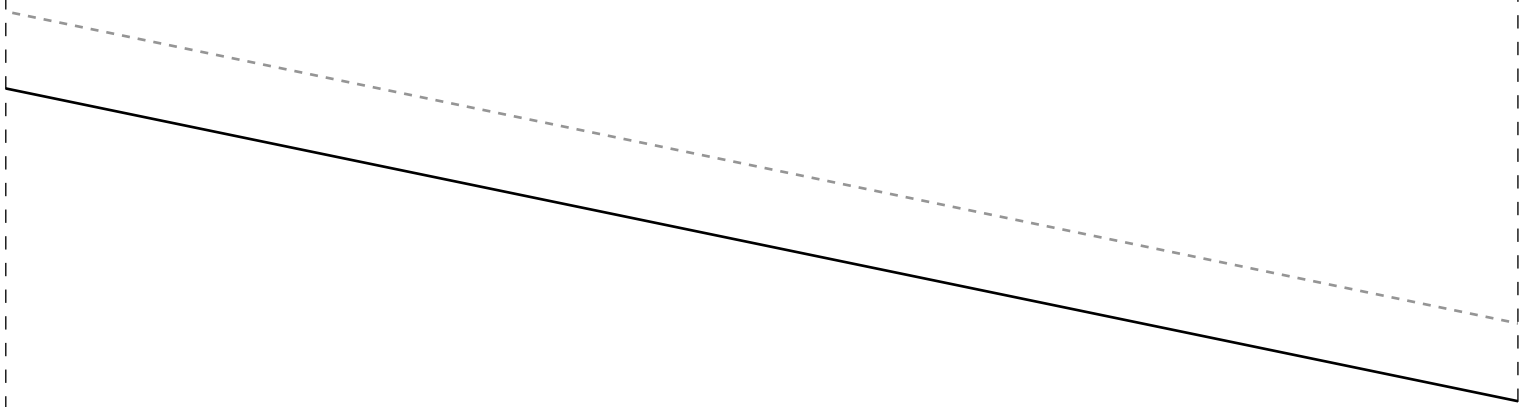
4cm



---

IDD03

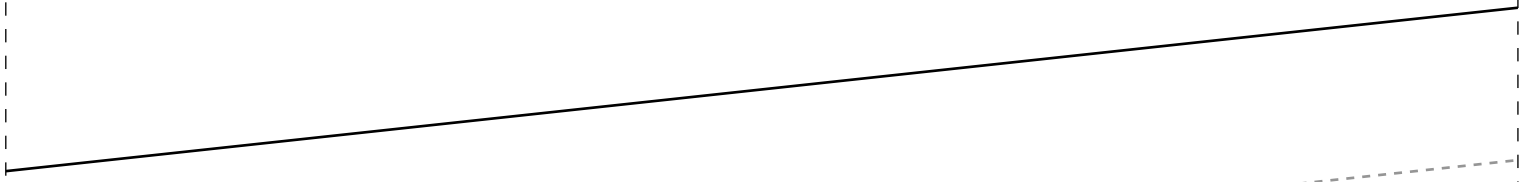
Inst  
Sema  
Vest







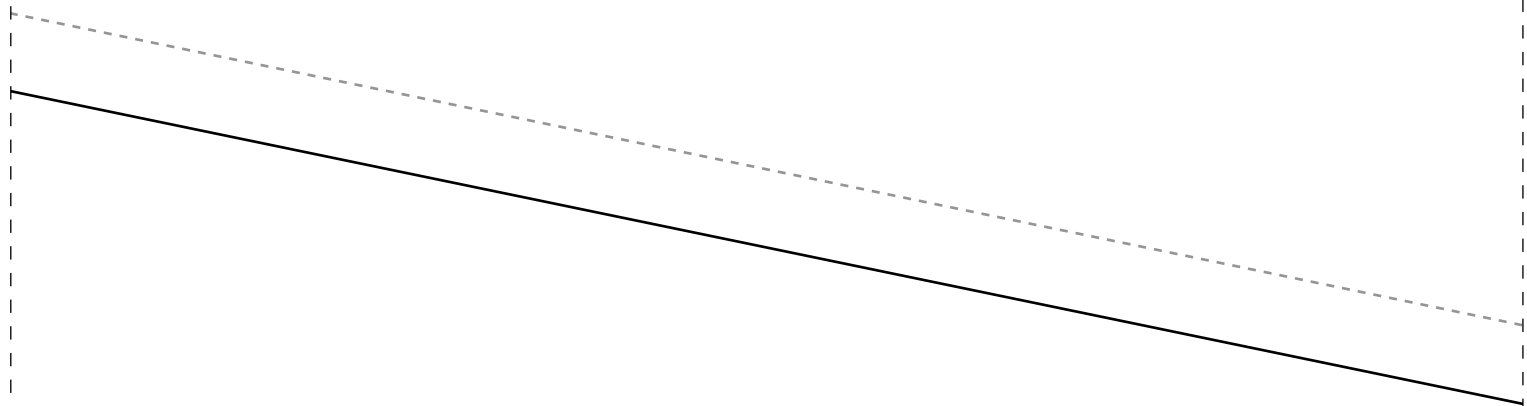
1-3



SAIA FRENTE 2X-54

---

Instituto Diana Demarchi  
na CMC  
ido Envelope



□

### Ficha técnica:

Tecido plano 140cm de largura

- tamanhos 36/38 2m
- tamanhos 40/42 2,25m
- tamanhos 44/46 3,15m
- tamanhos 48/50 3,30m
- tamanhos 52/54 3,80m

-3m de viés para acabamentos

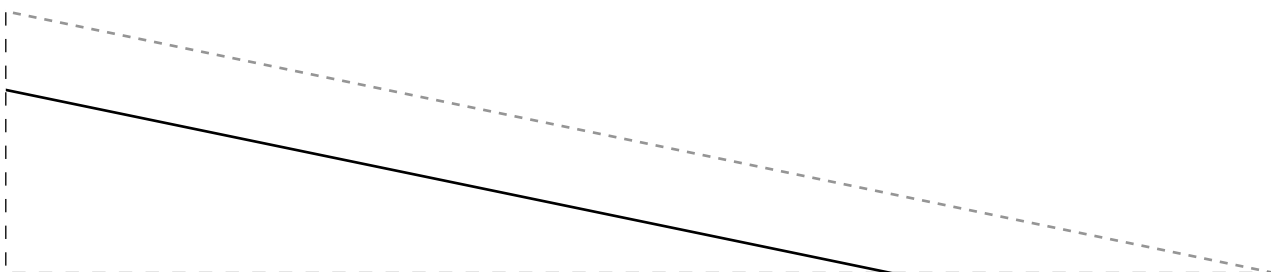
Decote e cavas com viés rebatido na reta

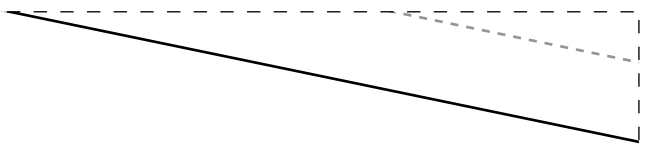
Barra e babado com bainha lenço

Cordinha para a cintura (pode ser de viés ou comprada pronta):

- tamanhos 36/38 uma de 90cm e outra de 5
- tamanhos 40/42 uma de 95cm e outra de 5
- tamanhos 44/46 uma de 100cm e outra de
- tamanhos 48/50 uma de 105cm e outra de
- tamanhos 52/54 uma de 110cm e outra de

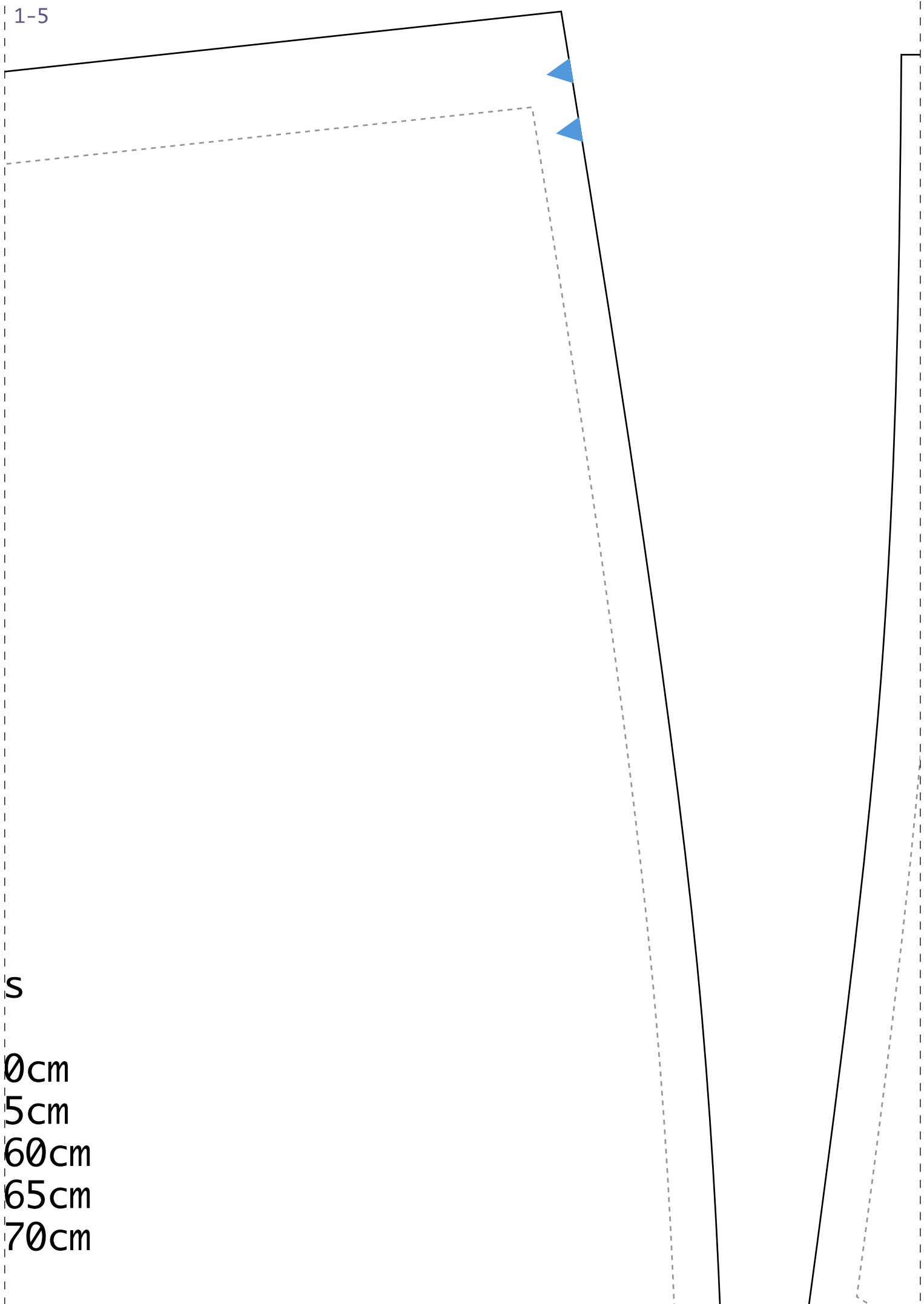








1-5



s

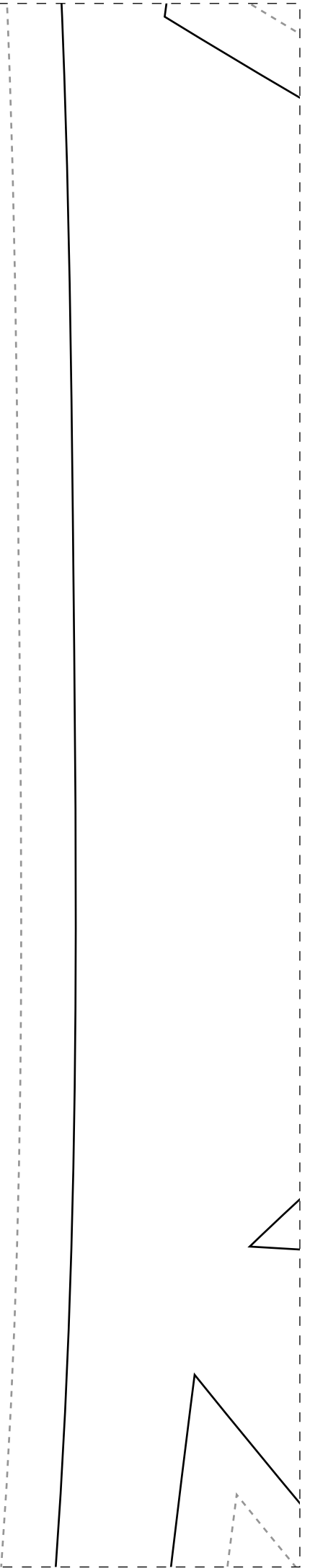
0cm

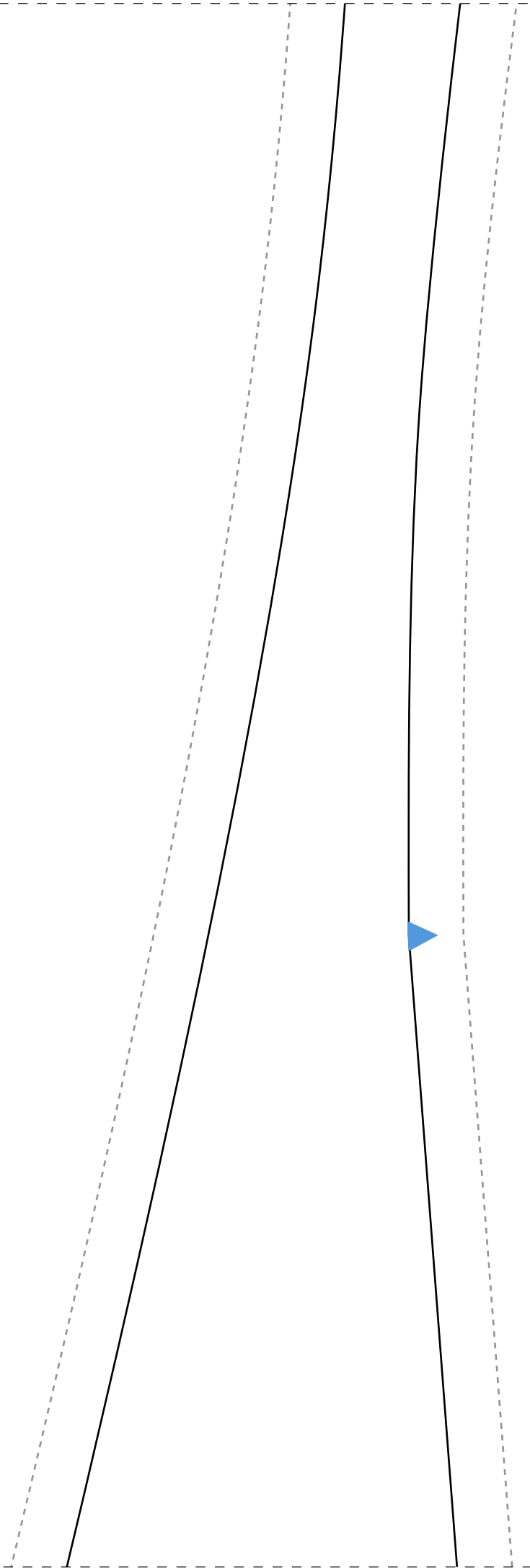
5cm

60cm

65cm

70cm



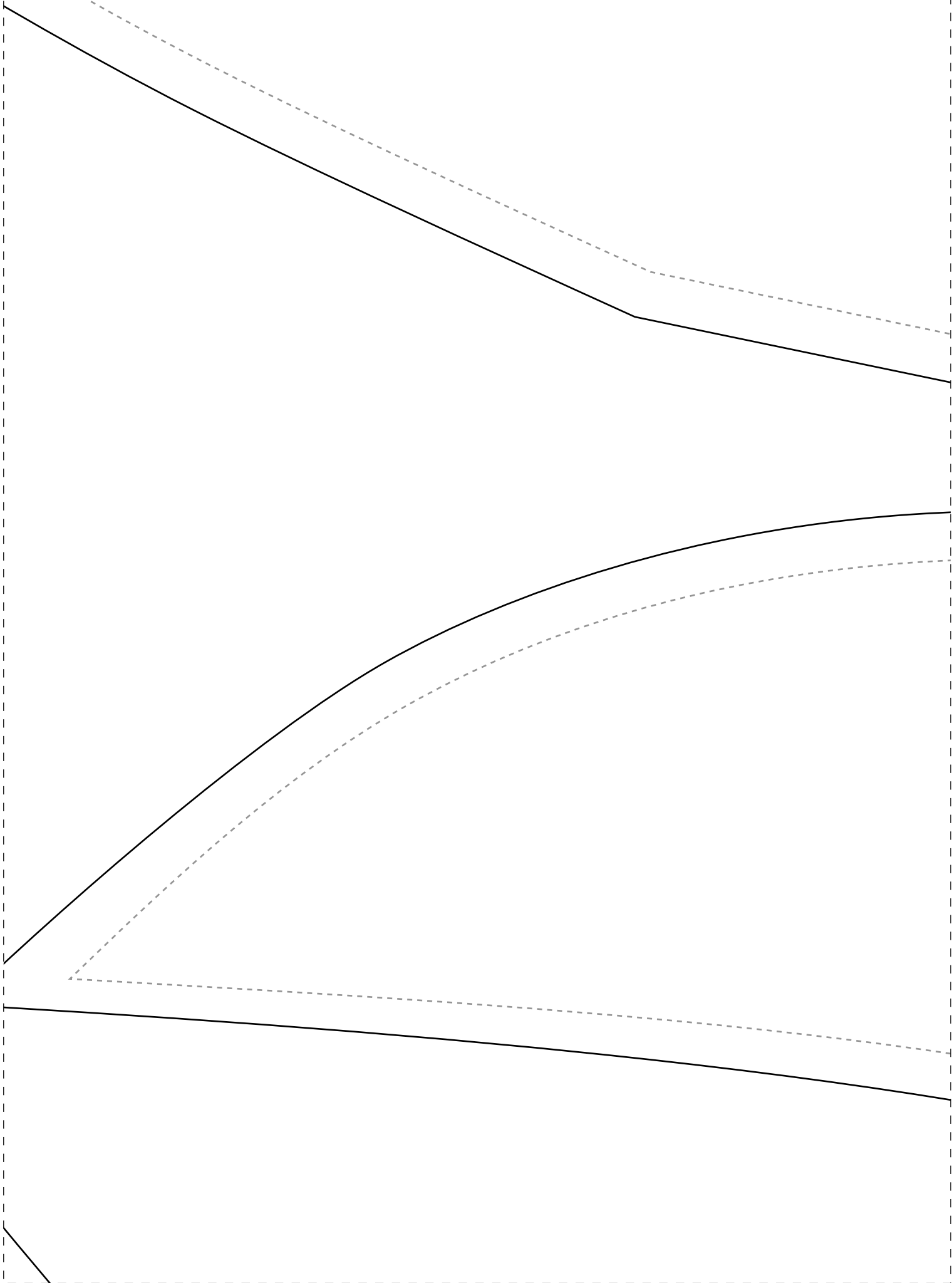


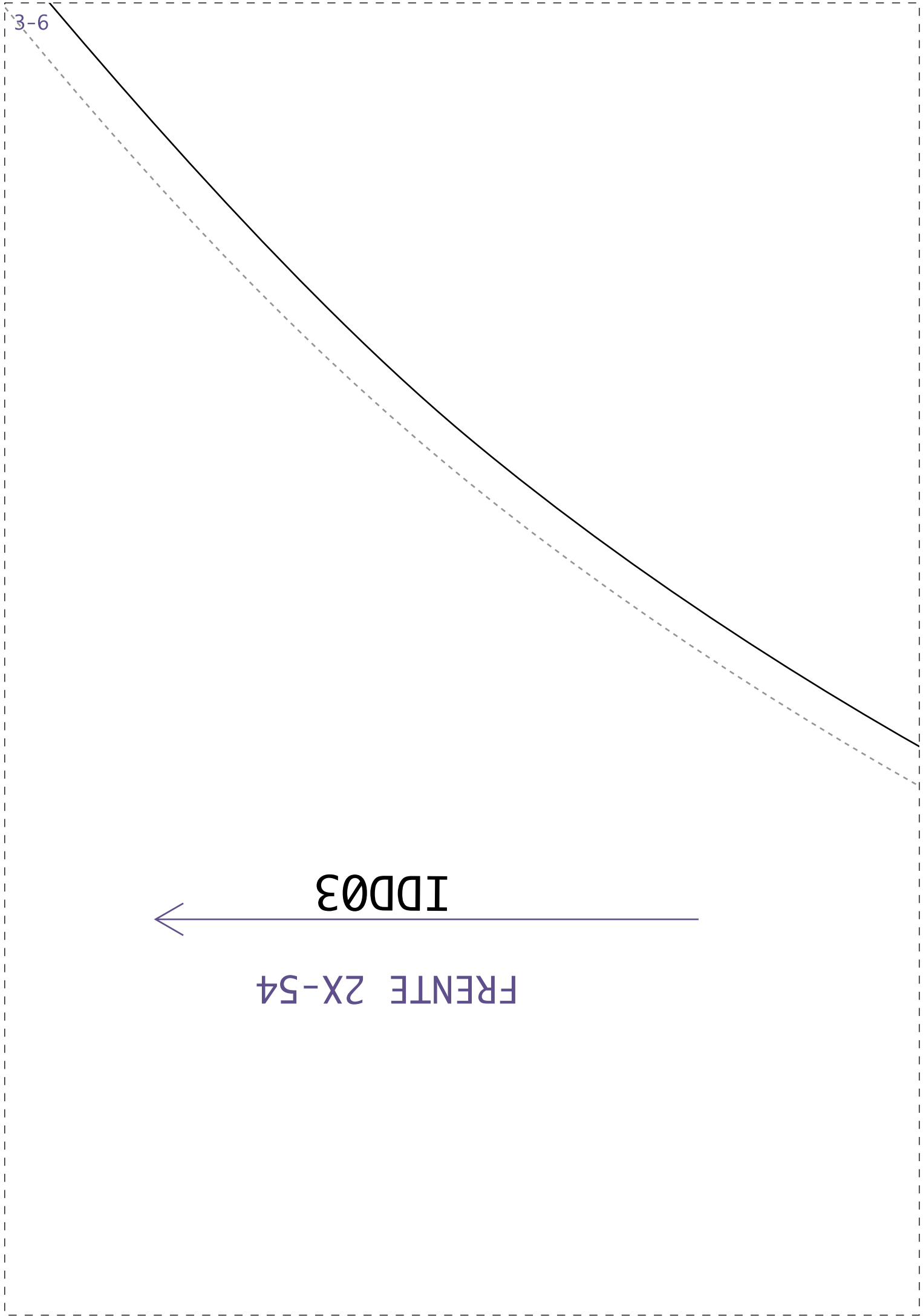
4-5





2-6





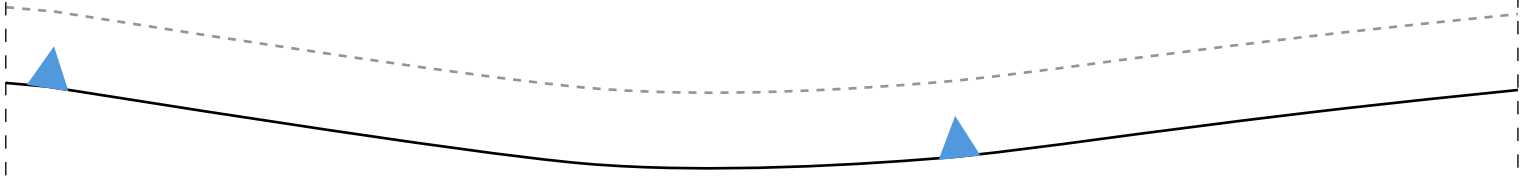
3-6

IDD03

FRENTE 2X-54



4-6

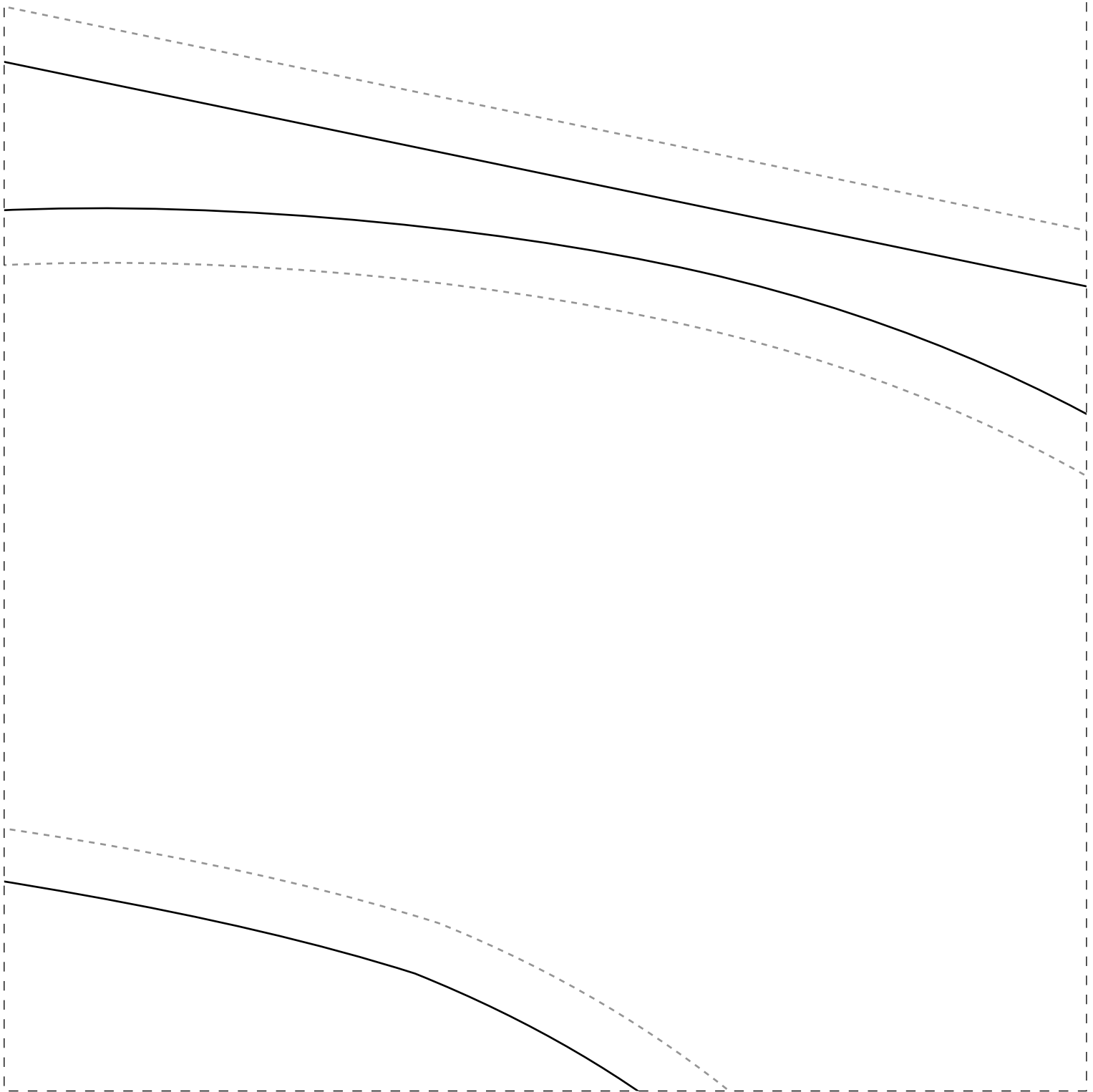




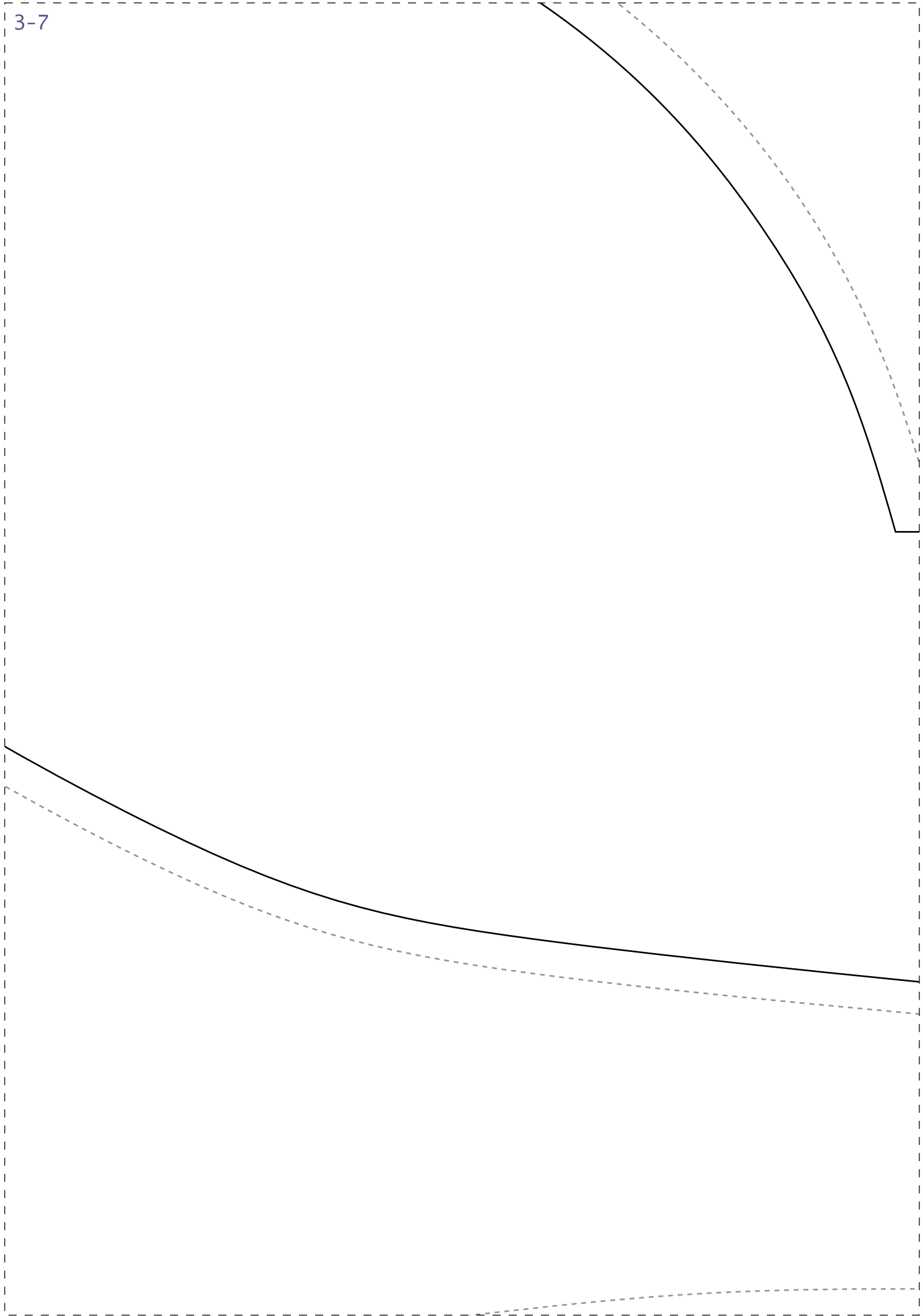
---

IDD03

ISSV



3-7



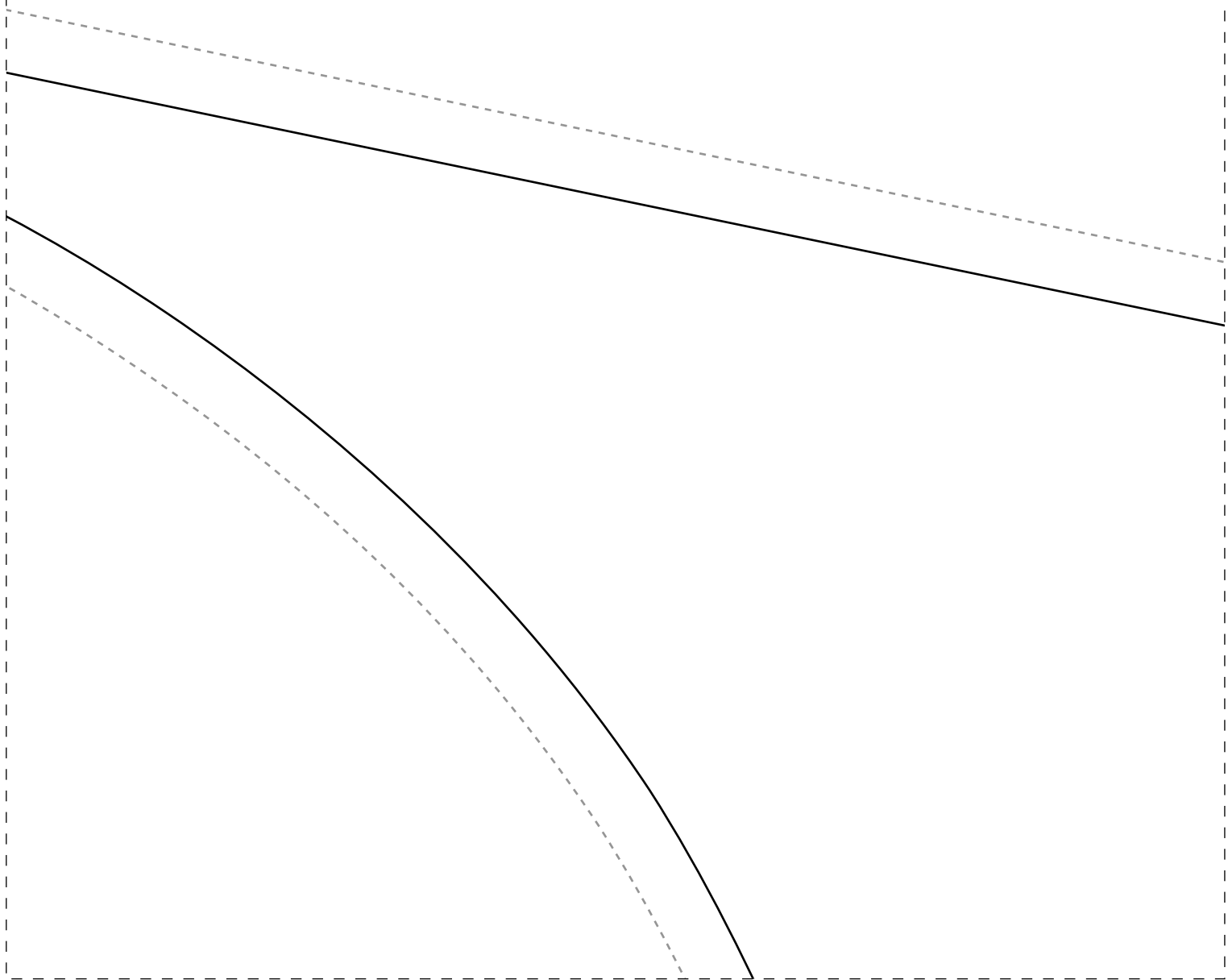
4-7



DOBRA

SAIA COSTAS 1X-54

Instituto Diana Demarch  
Semana CMC  
Vestido Envelope

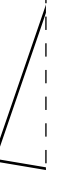
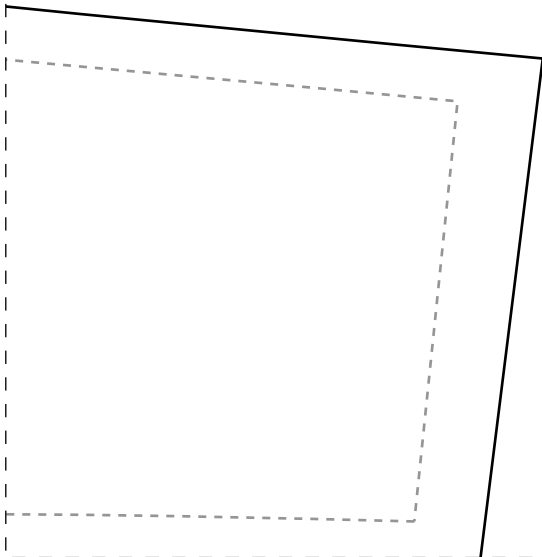


3-8

BABADO 2X-54

→  
IDD03

DOBRA

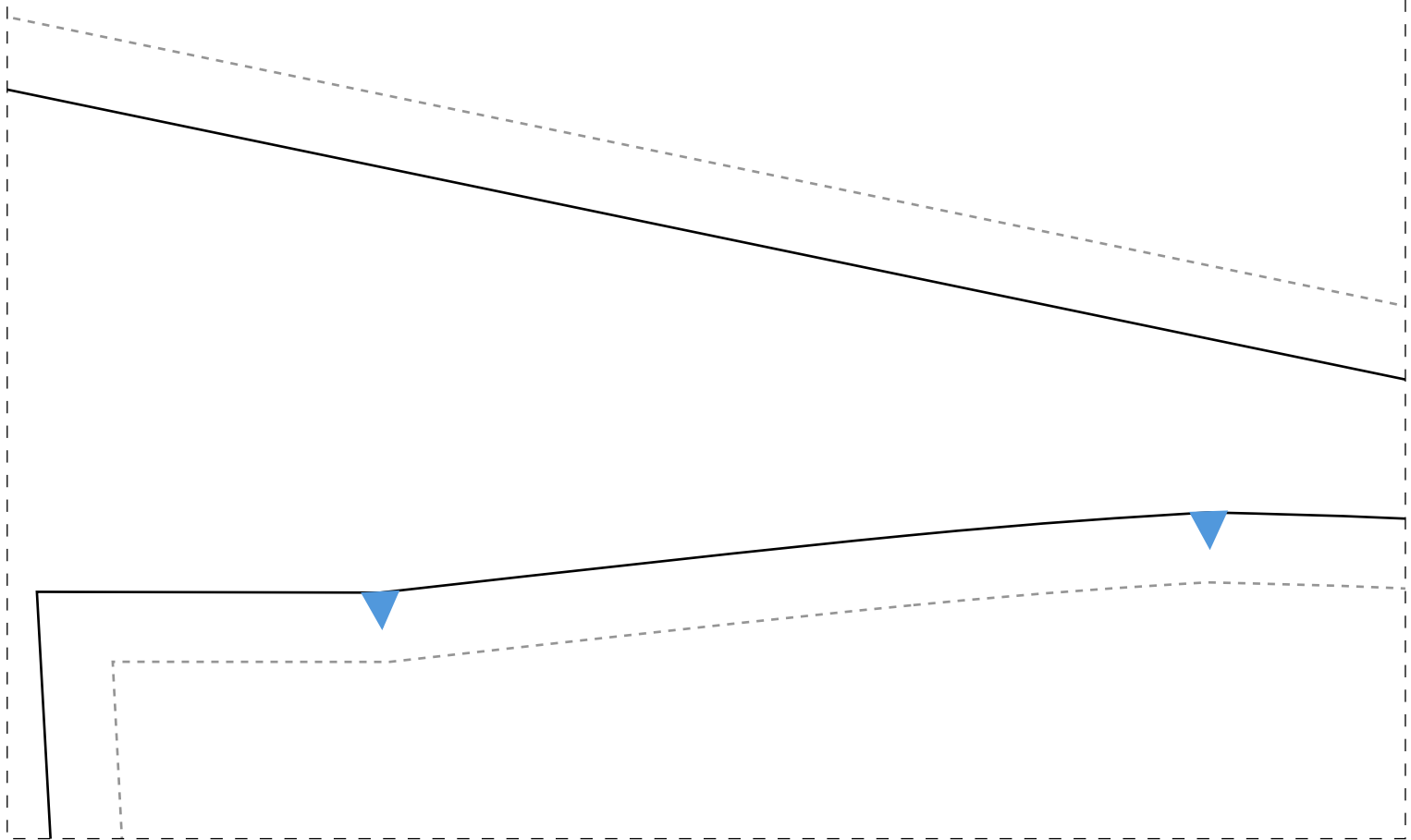






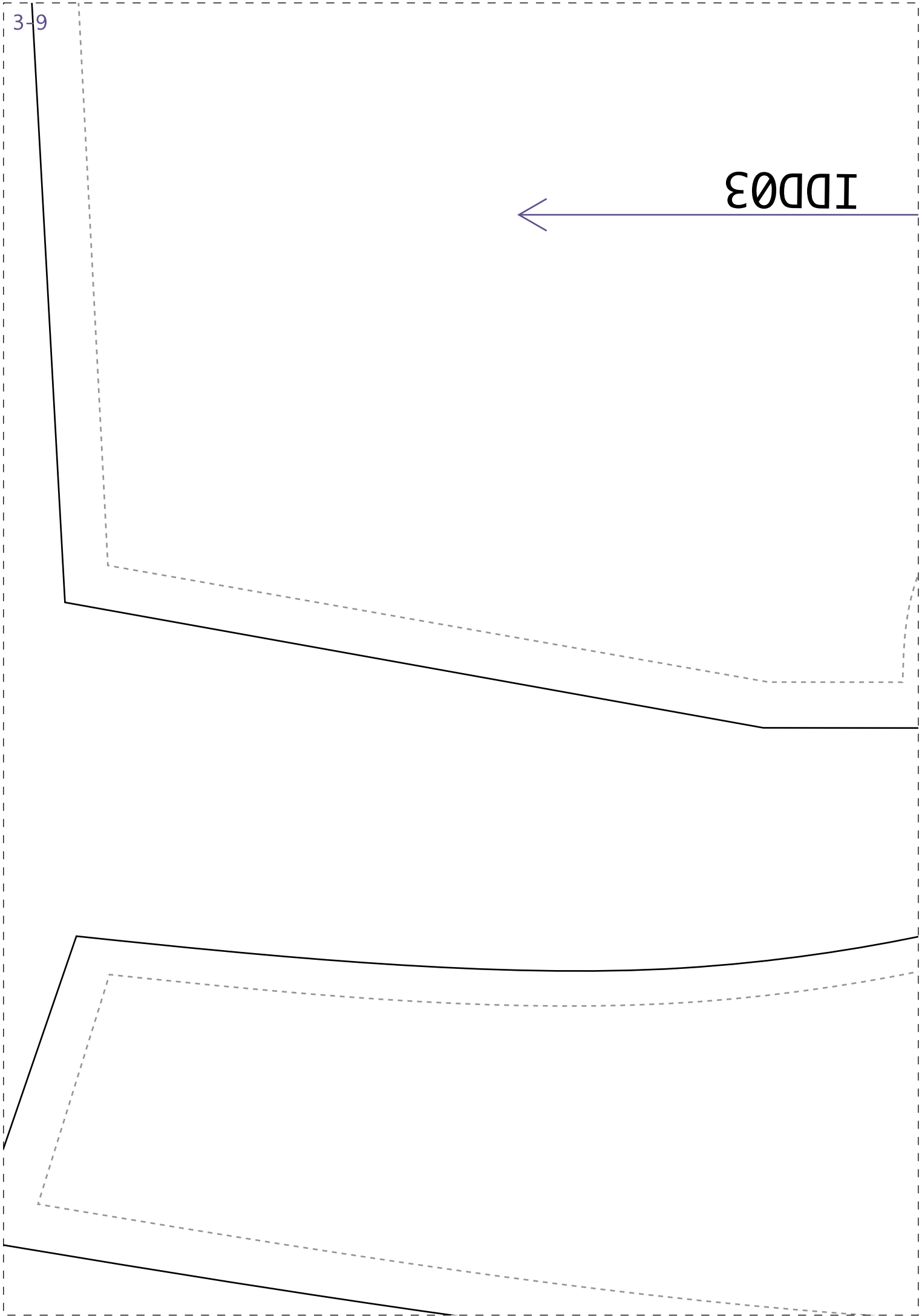


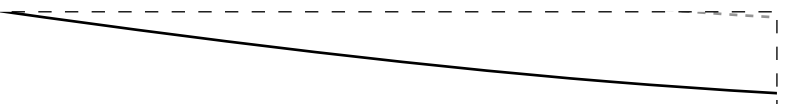
**i**

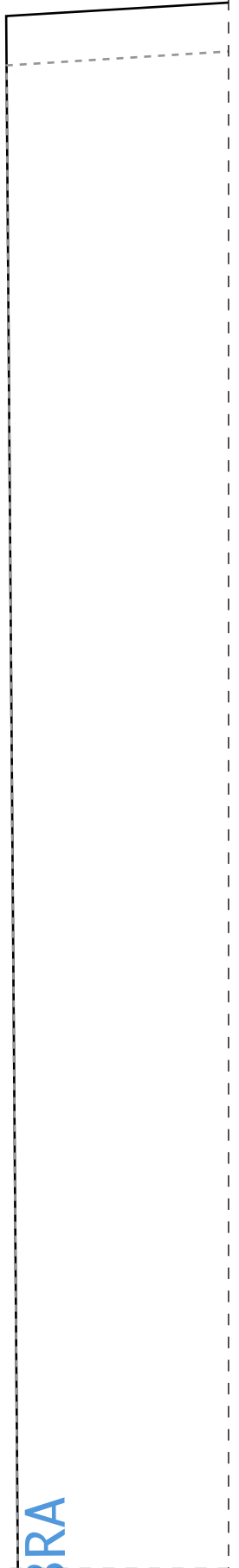
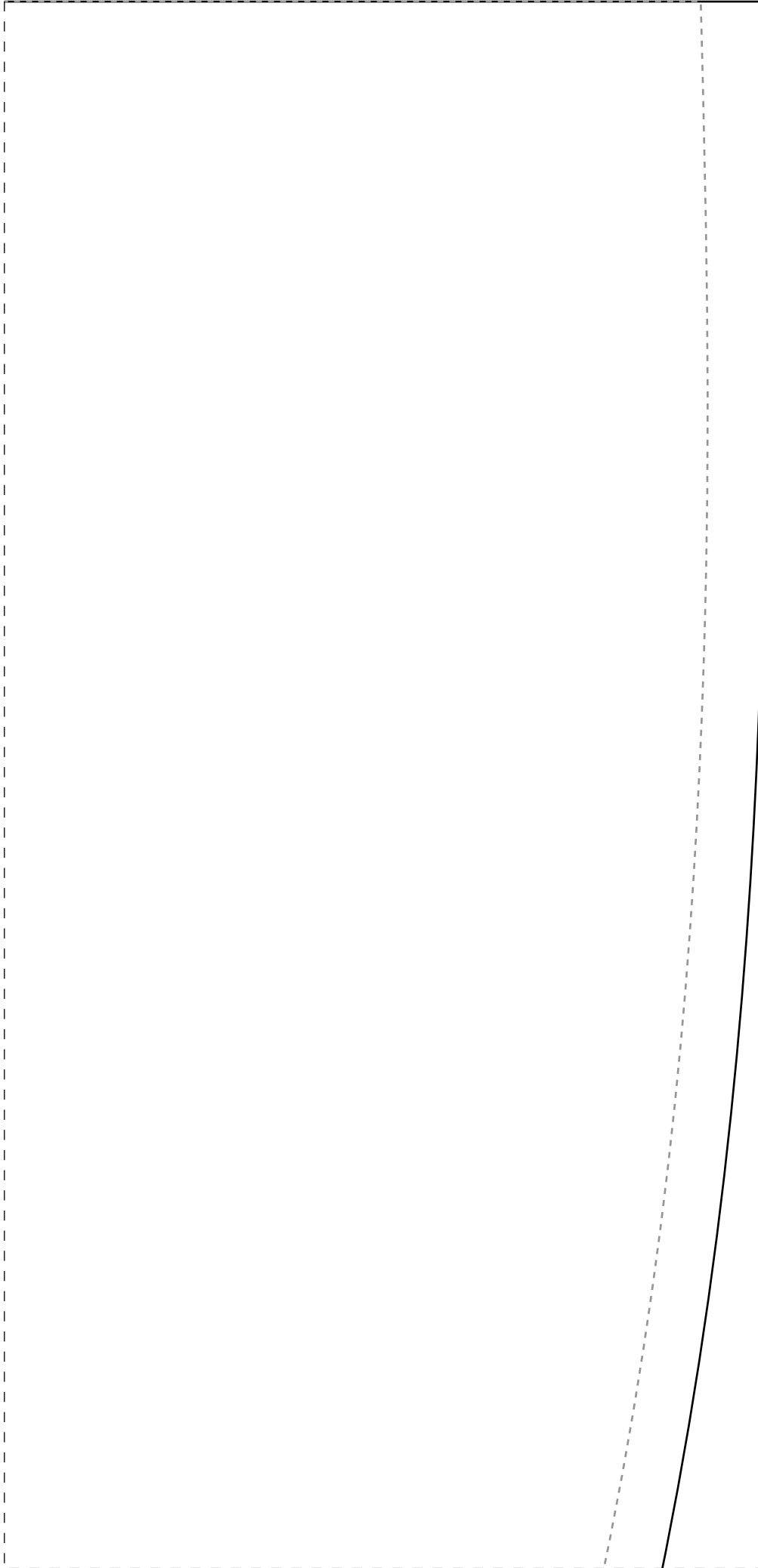


3-9

IDD03

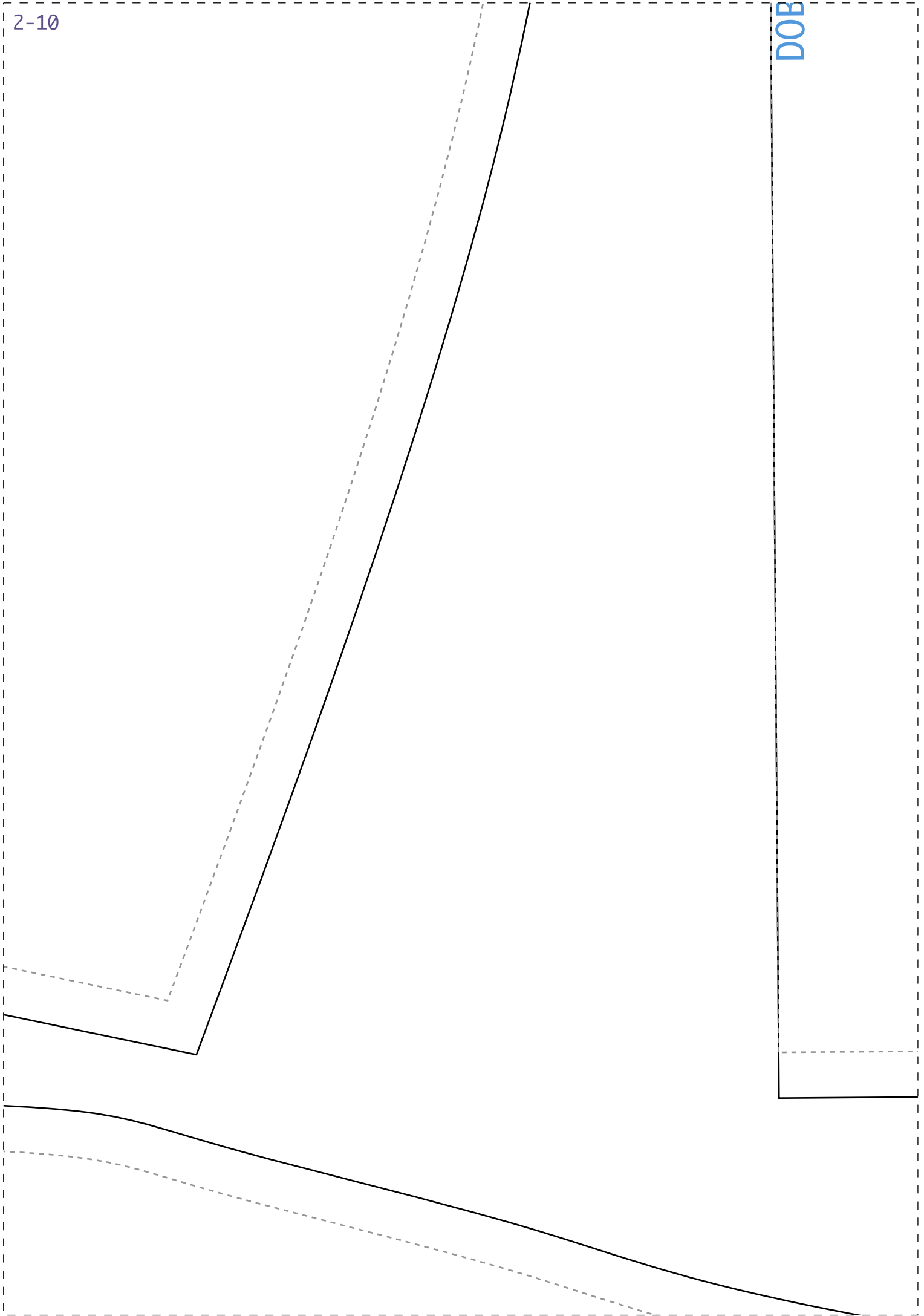






2-10

DOB

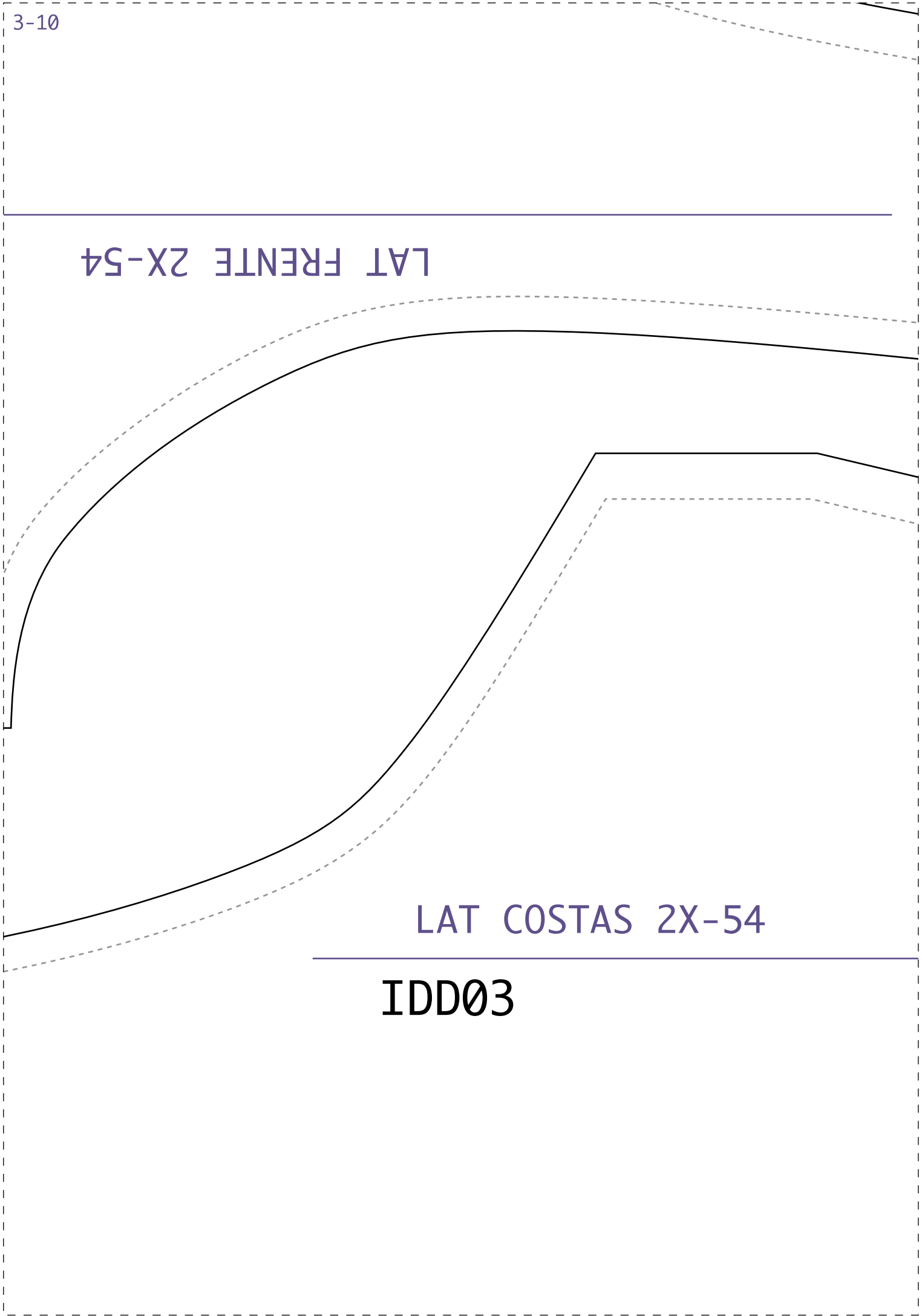


3-10

LAT FRENTE 2X-54

LAT COSTAS 2X-54

IDD03

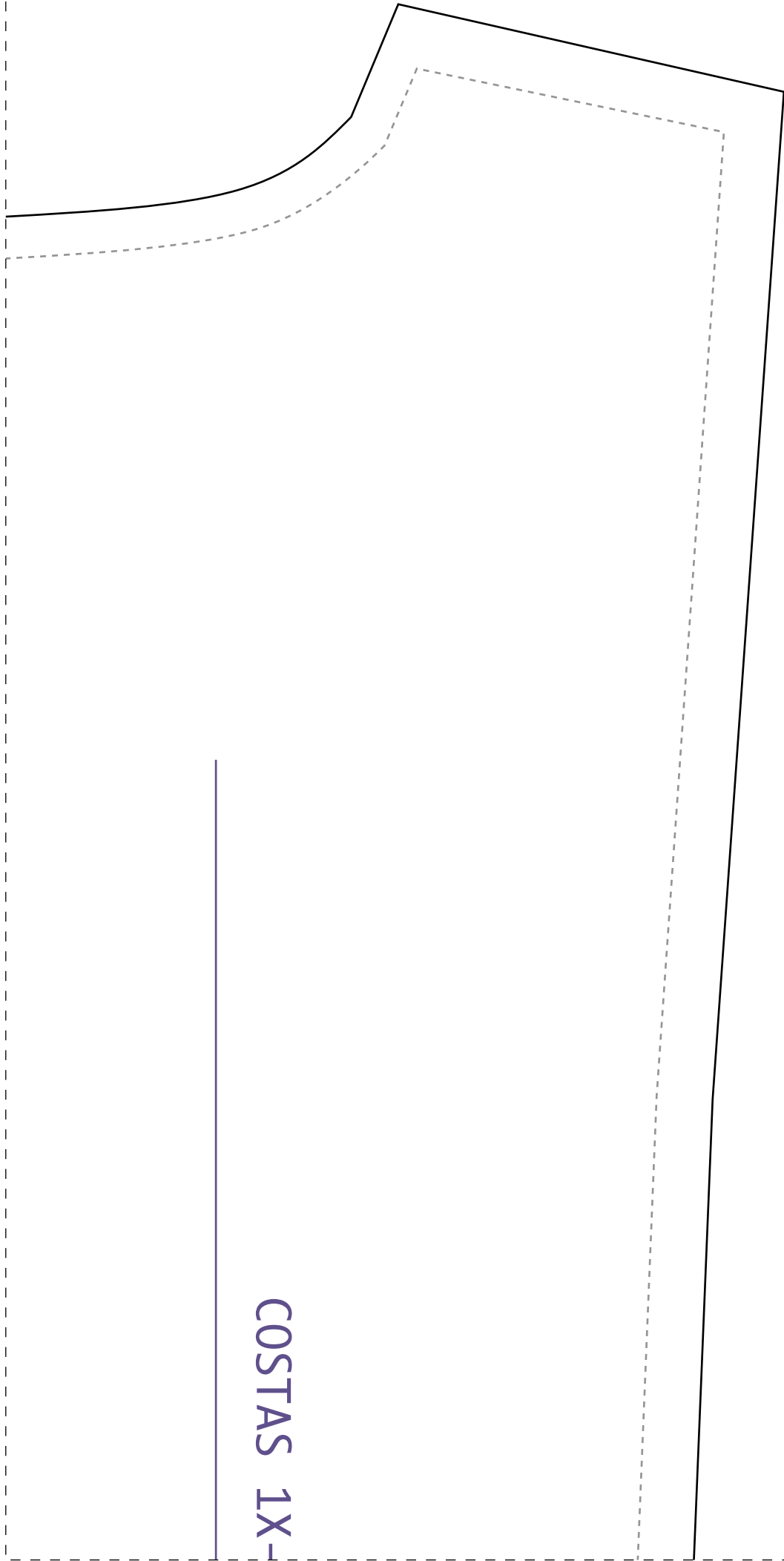






1-11

COSTAS 1X-

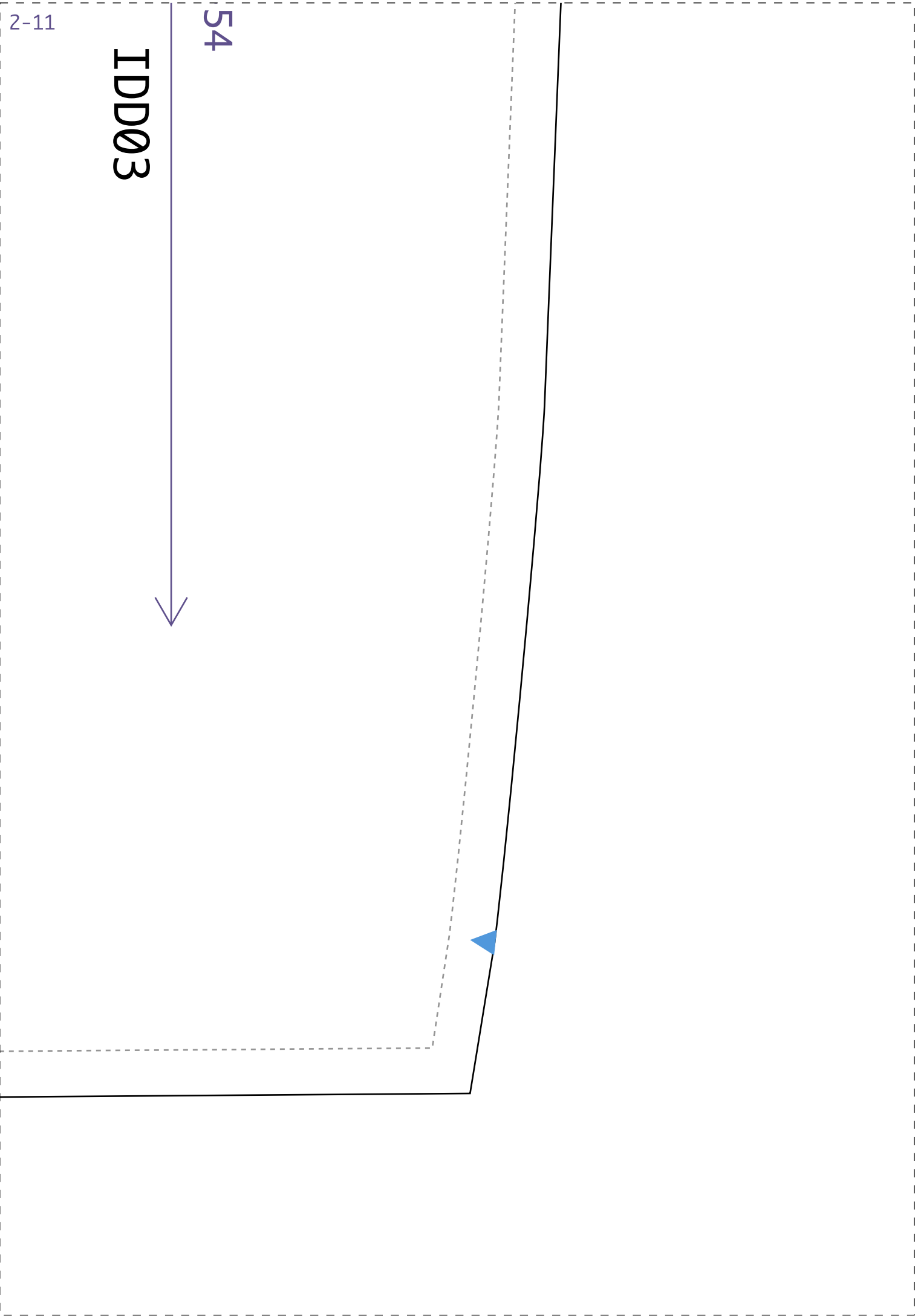


54

I DD03



2-11



3-11

