

dobra

Ficha:

-Tecido malha 1,4m de largura

-Cotton ou similares

-Elástico de 3,5cm largura:

PP=58cm, P=62cm, M=66cm, G=70cm, GG=74cm,

-Sobrepor Elástico 1cm por cima da cueca

-Recorte Frente duplo

-0,40m para todos tamanhos

Esses moldes são uma parceria entre IDD e Modelista Michele Martins

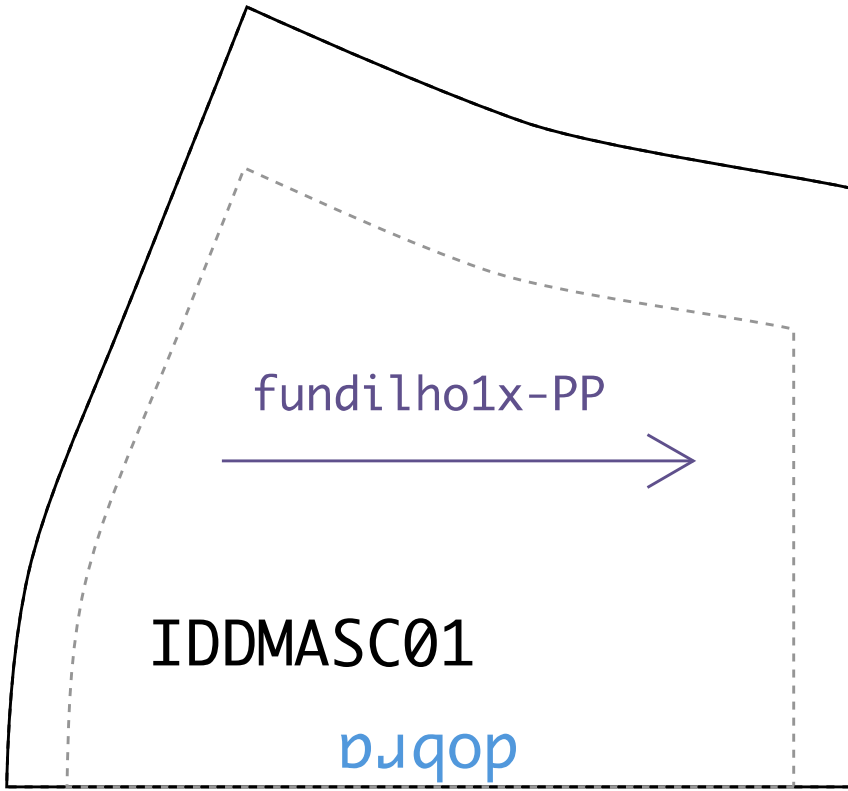
Costas1x-PP

IDDMASC01

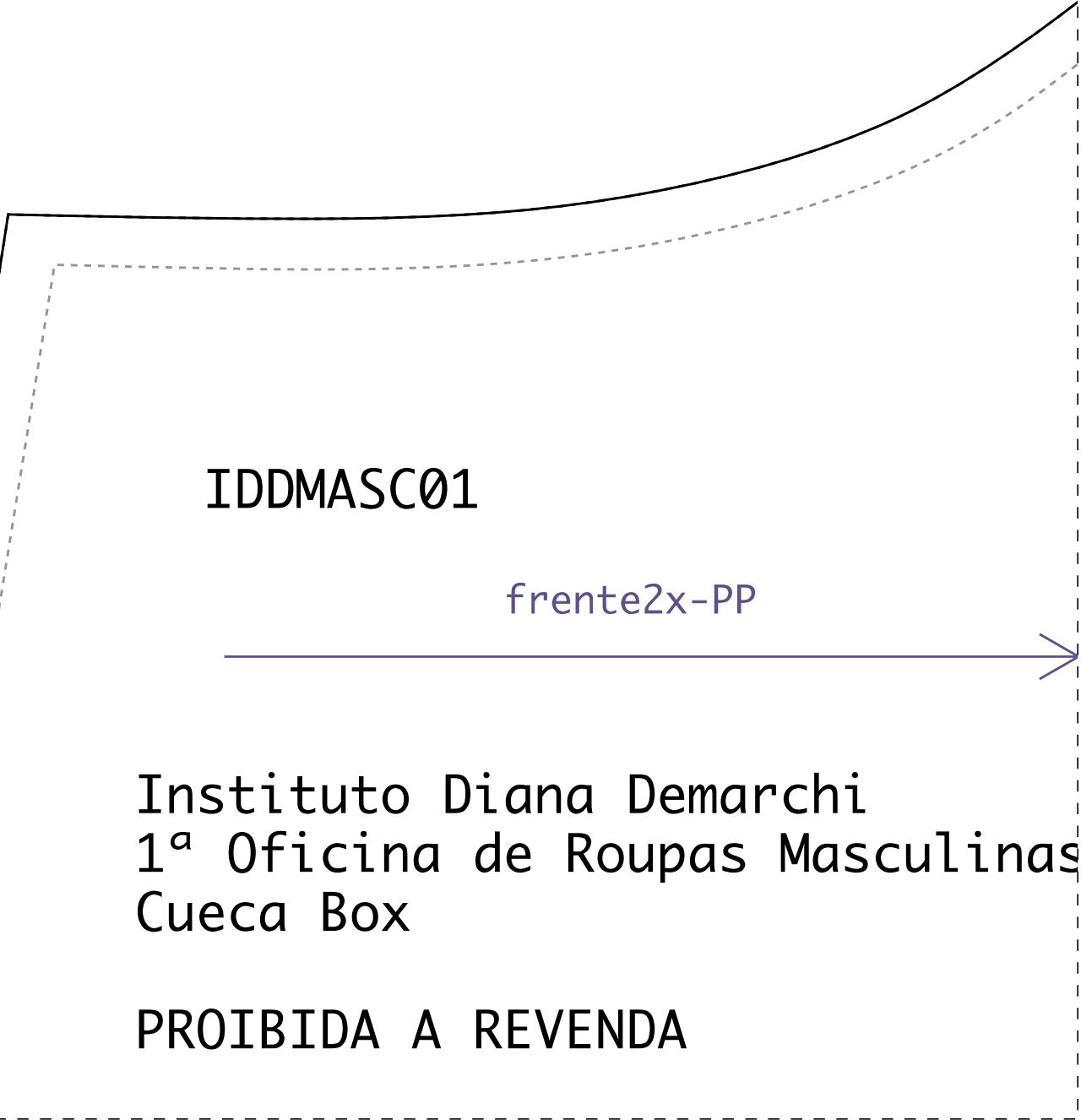
centro

IDDMASC01

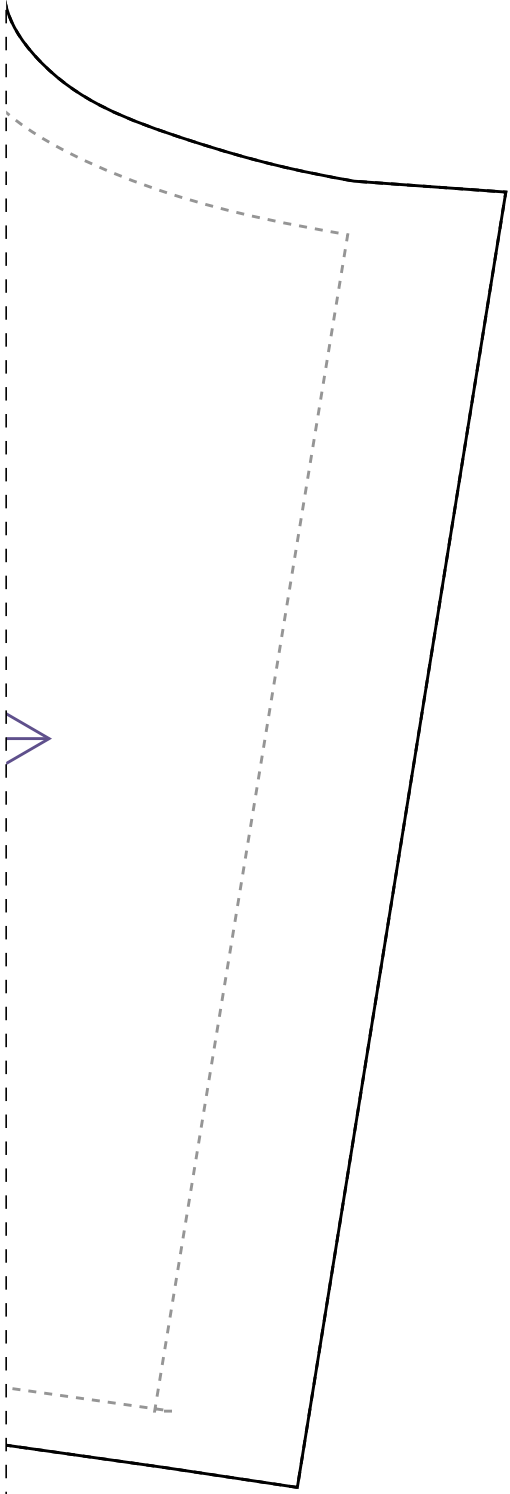
recorte frente4x-PP



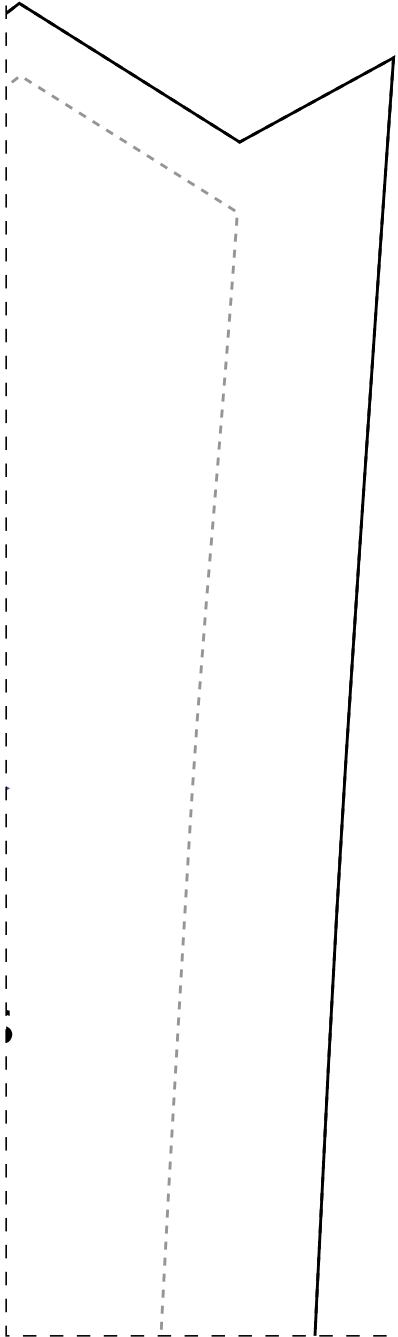
4



1-2



1-cm



3-2